

PROCLAMATION COINS



1244*
Brazil, Mary I, 6,400 reis or half Johanna, 1792 R (Rio) (KM.226.1). *Extremely fine/good extremely fine with some mint bloom.*

\$1,250

Ex Noble Numismatics Sale 62 (lot 1401).



1245*
Brazil, Mary, 6,400 reis or half Johanna, 1792 R (Rio) (KM.226.1). *Good very fine.*

\$1,750

Ex Louis Eliasberg Collection.



1246*
Chile, Charles III, eight escudos, 1798 DA Santiago Mint (KM.54). *Rim flaw at 9 o'clock, nearly very fine / good very fine.*

\$1,500



1247*
Great Britain, George III, guinea, fifth head or spade type, 1788 (S.3729). *Extremely fine.*

\$900

Ex Noble Numismatics Sale 62 (lot 1405).



1248*
Great Britain, George III, guinea, fifth head or spade type, 1798 (S.3729). *Extremely fine.*

\$800

1249
Great Britain, George III, cartwheel two pence, 1797 (S.3776). *Nearly very fine.*

\$100

1250
Great Britain, George III, cartwheel twopence and penny, 1797, halfpenny 1806 (S.3776, S.3777, S.3781). *Fine - very fine.* (3)

\$100

1251
Great Britain, George III, cartwheel pennies 1797 (S.3777). *Cleaned of oxidisation, otherwise very fine.* (3)

\$100



1252*
Great Britain, George III, copper farthing, 1799, three berries, broken 'B' in Britannia (S.3779). *Extensive die breaks on obverse, brown tone, extremely fine or better.*

\$200



1253*
India, Bengal Presidency, E.I.C, gold mohur, Murshidabad Mint, AH 1202, Year 19, issue of 1790, oblique milling (KM.103). *Nearly extremely fine.*

\$950



1254*
Mexico, Charles III, silver eight reales, pillar dollar type, 1767 (KM.105). *Light grey and golden brown toning, good very fine.*

\$250

1255

Mexico, Charles III, silver eight reales, 1792 and 1798 F.M. (KM.109). *Cleaned, very fine; good very fine.* (2)

\$200



1256*

Netherlands, Holland, gold ducat 1769 (KM.12). *Slightly rippled flan, otherwise very fine.*

\$600

1257

Netherlands, Overijssel, silver gulden 1733 (KM.63.3). *Toned good fine.*

\$100



1258*

Spain, Charles III, gold two escudos 1788 M, Madrid Mint (KM.417.1a). *Very fine.*

\$650



1259*

Spain, Charles IV silver eight reales, 1798 S, Seville Mint (KM.432.2). *Cleaned of oxidisation, otherwise very fine / good very fine.*

\$330

HOLEY DOLLARS AND DUMPS



1260*

New South Wales, five shillings or holey dollar, 1813 (Mira Noble NDV/4, 1790/5, dies -:I struck on a Charles IV (with Charles III portrait) 1790 (or 1789) eight reales Mexico City Mint, moneyer F.M. *Countermark worn smooth on obverse, fine on reverse, coin overall well worn and fair, rare.*

\$20,000

Ex A.B. Triggs Collection (Lawsons Sydney 1945, together with dump). The owner's grandfather purchased this lot at the auction. Mira Noble incorrectly identifies NDV/4 as being in the Dixson Collection (on information from the late Phillip Spalding). This error has been confirmed by the State Library which checked the attribution against the Dixson Collection.



1261*

New South Wales, fifteen pence or dump, 1813 (Mira dies A/1). *Toned, well worn with coarse scratching on the reverse, otherwise nearly fine.*

\$10,000

Ex A.B. Triggs Collection (Lawson's of Sydney 1945 together with holey dollar).



1262*

New South Wales, fifteen pence or dump, 1813 (Mira dies D/2). *Pierced for wear, reverse shaved smooth and engraved '29/10/12' in centre otherwise fine and an interesting memento of colonial Australia and Gallipoli.*

\$3,000

The date is believed to commemorate the day the owner's brother was killed working on the Sydney trams. The owner, Arthur Richard Robinson (29 April 1888-?), carried this coin as a good-luck charm during World War I. After enlisting on 18 August 1914 he joined 4th Battalion and embarked for Gallipoli, where he was among the last group to be evacuated. From Gallipoli he went to Pozieres where he suffered a serious shrapnel wound to his right shoulder and lower jaw, resulting in his return to Sydney for recuperation. He resumed service at the front with 4th Battalion 24 April 1917 and returned to Sydney 18 June 1919, having attained the rank of lieutenant. His brother was Alfred Robinson (28.2.1891-29.10.1912). Includes colour patch and badge of Arthur Robinson (recipient of World War I trio) and a photo of each brother.

AUSTRALIAN GOLD COINS

ADELAIDE ASSAY OFFICE



1263*

Adelaide pound, 1852, second type with crenellated inner circle on the reverse. *Minor contact marks, otherwise with some mint bloom nearly uncirculated, well struck from later state of the dies with characteristic five raised 'notch' dots above 22 c on reverse and rare in this condition.*

\$40,000



1264*

Adelaide pound, 1852, second type with crenellated inner circle on the reverse. *Minor scratch on reverse, otherwise good extremely fine/extremely fine, an attractive early strike from the dies and rare in this condition.*

\$40,000



1265*

Adelaide pound, 1852, second type with crenellated inner circle on reverse. *Early die state, minor surface marks, otherwise good very fine.*

\$20,000

Slabbed as AU58 by NGC.

SYDNEY MINT SOVEREIGNS



1266*

Queen Victoria, first type, 1855. *Contact mark on nose, obverse rim nick at 2 o'clock, otherwise well struck with high rim, nearly extremely fine and rare thus.*

\$6,000



1267*

Queen Victoria, first type, 1855. *Very fine.*

\$5,000



1268*

Queen Victoria, first type, 1855. *Minor surface marking, otherwise very fine.*

\$4,000



1269*

Queen Victoria, first type, 1855. *Rim bruise at 5 o'clock on reverse, otherwise good very fine.*

\$3,000



1270*

Queen Victoria, first type, 1856. *Good fine.*

\$2,750



1271*

Queen Victoria, second type, 1857. *Nearly very fine with minor rim nicks.*

\$400



1272*

Queen Victoria, second type, 1858. *Good very fine and rare.*

\$1,500



1273*

Queen Victoria, second type, 1859. *Nearly extremely fine/ extremely fine and rare in this condition.*

\$2,500



1279*

Queen Victoria, second type, 1862/1 overdate. *Reverse rim bruised at 4 o'clock and edge milling filed smooth near bruise otherwise well struck, good extremely fine or nearly uncirculated and very rare thus.*

\$3,500



1274*

Queen Victoria, second type, 1859. *Surface marks, otherwise with considerable brilliance in the lettering and devices, extremely fine/ good extremely fine.*

\$2,000



1280*

Queen Victoria, second type, 1863. *Obverse scratches and surface marks, otherwise very fine/ good very fine.*

\$450



1275*

Queen Victoria, second type, 1860. *Surface marks, otherwise very fine/ good very fine and rare.*

\$1,250



1281*

Queen Victoria, second type, 1864. *Minor surface marks, well struck and good extremely fine.*

\$1,750



1276*

Queen Victoria, second type, 1860. *Minor surface marks, otherwise very fine and rare.*

\$1,250



1282*

Queen Victoria, second type, 1864. *Extremely fine with some mint bloom.*

\$750



1277*

Queen Victoria, second type, 1861. *Graze on back of neck, otherwise extremely fine.*

\$1,500



1283*

Queen Victoria, second type, 1865. *Well struck, a little cleaned otherwise good extremely fine and rare in this condition.*

\$2,000



1278*

Queen Victoria, second type, 1861. *Surface marks, well struck with some mint bloom otherwise extremely fine.*

\$1,250



1284*

Queen Victoria, second type, 1865. *Frosty mint bloom, nearly extremely fine/ extremely fine and rare in this condition.*

\$1,500



1285*
Queen Victoria, second type, 1866. *Some mint bloom, nearly uncirculated.*

\$1,500



1291*
Queen Victoria, second type, 1868. *Smooth fields, a little rubbed, otherwise good extremely fine and rare thus.*

\$2,000



1286*
Queen Victoria, second type, 1866. *Attractive surfaces, good extremely fine and scarce thus.*

\$1,250



1292*
Queen Victoria, second type, 1868. *Considerable mint bloom, nearly uncirculated.*

\$1,500



1287*
Queen Victoria, second type, 1866. *Considerable mint bloom, extremely fine/ good extremely fine.*

\$1,000



1293*
Queen Victoria, second type, 1868. *Reverse rim nick at 9 o'clock, otherwise nearly uncirculated.*

\$1,400

Purchased from Spink Australia in June 1981.



1288*
Queen Victoria, second type, 1867. *Mirror like fields, good extremely fine and rare in this condition.*

\$2,400



1294*
Queen Victoria, second type, 1870. *Full mint bloom, uncirculated.*

\$2,800



1289*
Queen Victoria, second type, 1867. *Good extremely fine.*

\$1,000



1295*
Queen Victoria, second type, 1870. *Nearly uncirculated.*

\$1,800



1290*
Queen Victoria, second type, 1867. *Good extremely fine.*

\$800



1296*
Queen Victoria, second type, 1870. *Nearly full original mint bloom, uncirculated.*

\$1,600



1297*
Queen Victoria, second type, 1870. *Considerable original mint bloom, nearly uncirculated and rare in this condition.*
 \$1,500



1304*
Queen Victoria, second type, 1862, last two date figures high. *Good fine/ very fine and rare.*
 \$750

SYDNEY MINT HALF SOVEREIGNS

1298
Queen Victoria, first type, 1856. *Evenly worn, very good.*
 \$300



1305*
Queen Victoria, second type, 1864. *Very fine and rare in this condition.*
 \$1,250



1299*
Queen Victoria, second type, 1858. *Surface marks, otherwise good very fine and rare in this condition.*
 \$1,500



1306*
Queen Victoria, second type, 1864. *Very fine/ good very fine.*
 \$500



1300*
Queen Victoria, second type, 1859. *Good very fine and rare in this condition.*
 \$12,000



1307*
Queen Victoria, second type, 1866. *Scuff marks on neck, otherwise nearly extremely fine and rare thus.*
 \$2,000



1301*
Queen Victoria, second type, 1861/0 overdate. *Fine and very rare.*
 \$1,500

IMPERIAL SOVEREIGNS - SHIELD REVERSE



1302*
Queen Victoria, second type, 1861. *Good very fine.*
 \$2,500



1308*
Queen Victoria, 1872 Sydney. *Good extremely fine/ nearly uncirculated.*
 \$750



1303*
Queen Victoria, second type, 1861. *Nearly very fine and scarce thus.*
 \$750



1309*
Queen Victoria, 1880 Sydney. *Inverted A for V in Victoria. Good very fine/ extremely fine and very rare.*
 \$7,000



1310*
Queen Victoria, 1883 Melbourne. *Nearly extremely fine and rare.*

\$1,500



1317*
Queen Victoria, 1887 Sydney. *Extremely fine/ good extremely fine.*

\$450



1311*
Queen Victoria, 1884 Melbourne. *Good extremely fine.*

\$350

IMPERIAL SOVEREIGNS - ST GEORGE REVERSE



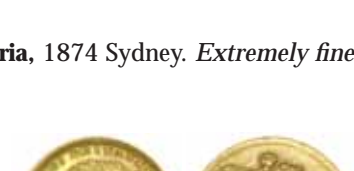
1318*
Queen Victoria, 1873 Melbourne. *Good extremely fine.*

\$500



1312*
Queen Victoria, 1884 Sydney. *Nearly uncirculated.*

\$450



1319
Queen Victoria, 1874 Sydney. *Extremely fine.*

\$300



1313*
Queen Victoria, 1885 Melbourne. *Nearly full mint bloom, nearly uncirculated/ uncirculated.*

\$500



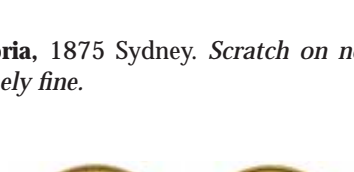
1320*
Queen Victoria, 1875 Melbourne. *Dull toned extremely fine, struck with slipped collar, reverse rim flat.*

\$350



1314*
Queen Victoria, 1885 Sydney. *Nearly uncirculated.*

\$450



1321
Queen Victoria, 1875 Sydney. *Scratch on neck otherwise good extremely fine.*

\$300



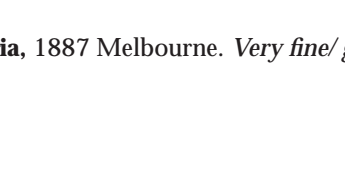
1315
Queen Victoria, 1886 Sydney. *Extremely fine.*

\$300



1322*
Queen Victoria, 1876 Melbourne. *Uncirculated.*

\$1,000



1316*
Queen Victoria, 1887 Melbourne. *Very fine/ good very fine and rare.*

\$2,500

1323
Queen Victoria, 1876 Sydney. *Extremely fine/good extremely fine.*

\$300

1324
Queen Victoria, 1877 Melbourne. *Extremely fine.*

\$300

1325
Queen Victoria, 1878-80 Melbourne (McD.155, 157a, 159).
The second scarce, extremely fine or better. (3)

\$750

1326
Queen Victoria, 1879 Melbourne. *Contact mark on cheek otherwise good extremely fine.*

\$300

1327
Queen Victoria, 1880 Melbourne (McD.159). *Extremely fine.*

\$300

1328
Queen Victoria, 1880, 1881, 1883 Melbourne. (McD.159, 161, 165a). *Extremely fine or better. (3)*

\$750

1329
Queen Victoria, 1881 Melbourne, no B.P (McD.161a).
Cleaned good extremely fine.

\$300



1330*
Queen Victoria, 1881 Melbourne, medium tail (McD.161b).
Good extremely fine and rare.

\$300

1331
Queen Victoria, 1881 Sydney, no B.P (McD.160a). *Good extremely fine.*

\$300



1332*
Queen Victoria, 1884 Melbourne (McD.167b). *Nearly full original mint bloom, uncirculated.*

\$600



1333*
Queen Victoria, 1884 Melbourne, (McD.167b). *Nearly uncirculated.*

\$450



1334*
Queen Victoria, 1884 Sydney. *Nearly uncirculated.*

\$500

1335
Queen Victoria, 1885 Melbourne. *Good extremely fine.*

\$300

1336
Queen Victoria, 1886 Melbourne. *Brilliant fields, nearly uncirculated.*

\$300



1337*
Queen Victoria, young head, 1887 Sydney. *Good extremely fine/nearly uncirculated.*

\$500

1338
Queen Victoria, Jubilee head, 1887 Melbourne (McD.175b).
Nearly uncirculated.

\$250

1339
Queen Victoria, Jubilee head, 1887 Melbourne (McD.175b).
Nearly uncirculated.

\$250



1340*
Queen Victoria, Jubilee head, 1887 Sydney (McD.174). *Full mint bloom, nearly gem uncirculated and very rare in this condition.*

\$5,000

1341
Queen Victoria, 1888 Melbourne (McD.177a). *Nearly uncirculated.*

\$250

1342
Queen Victoria, 1888 and 1892 Melbourne, (McD.177a, 185). *Extremely fine; nearly uncirculated. (2)*

\$450

1343
Queen Victoria, 1888 Sydney, (McD.176c). *Good extremely fine.*

\$250

1344
Queen Victoria, Jubilee head, 1889 (McD.178a) and 1893 Sydney. *Extremely fine; nearly uncirculated. (2)*

\$400

1345
Queen Victoria, 1890 Melbourne. *Nearly uncirculated.*

\$300



1346*
Queen Victoria, 1890 Sydney, short tail (McD.180). *Subdued full mint bloom, uncirculated.*
 \$350

1347
Queen Victoria, 1890 Sydney, (McD.180, 180a). *The first scarce, good extremely fine; the second very fine. (2)*
 \$500



1348*
Queen Victoria, 1891 Melbourne. *Choice uncirculated.*
 \$800

1349
Queen Victoria, 1892 Sydney. *Good extremely fine.*
 \$250



1350*
Queen Victoria, Jubilee head, 1893 Melbourne. *Uncirculated.*
 \$500

1351
Queen Victoria, Jubilee head, 1893 Sydney. *Extremely fine/good extremely fine.*
 \$250



1352*
Queen Victoria, old head, 1893 Melbourne. *Choice uncirculated.*
 \$600

1353
Queen Victoria, old head, 1893 and 1894 Sydney. *Good extremely fine. (2)*
 \$400



1354*
Queen Victoria, 1895 Melbourne. *Choice uncirculated.*
 \$400



1355*
Queen Victoria, 1896 Melbourne. *Uncirculated.*
 \$400



1356*
Queen Victoria, 1896 Sydney. *Full mint bloom, uncirculated.*
 \$300

1357
Queen Victoria, 1896, 1899 and 1901 Sydney. *Extremely fine - good extremely fine. (3)*
 \$600

1358
Queen Victoria, 1897 Melbourne. *Choice uncirculated.*
 \$300

1359
Queen Victoria, 1897 Melbourne. *Uncirculated.*
 \$250



1360*
Queen Victoria, 1899 Sydney. *Choice uncirculated.*
 \$500



1361*
Queen Victoria, 1899 Perth. *Minor surface marks otherwise nearly uncirculated and rare in this condition.*
 \$1,800



1362*
Queen Victoria, 1899 Perth. *Dull frosted mint bloom otherwise nearly uncirculated.*
 \$750

1363
Queen Victoria, 1901 Perth. *Extremely fine/good extremely fine.*

\$200

1364
Edward VII, 1902-1910 Melbourne. *Good very fine - good extremely fine.* (9)

\$1,600

1365
Edward VII, 1902-1910 Perth. *Very fine - good extremely fine.* (9)

\$1,500

1366
Edward VII, 1902-1906 Sydney. *Fine - very fine.* (5)

\$850

1367
Edward VII, 1907-1910 Sydney. *Extremely fine - good extremely fine.* (4)

\$700

1368
Edward VII, 1917 Sydney; **George V**, 1912 Melbourne. *Uncirculated.* (2)

\$400

1369
George V, 1911-1918 Melbourne. *Good extremely fine.* (8)

\$1,450

1370
George V, 1911-1918 Perth. *Good extremely fine.* (8)

\$1,400

1371
George V, 1911, 1914, 1917, 1919 and 1925 Sydney. *Extremely fine.* (5)

\$850

1372
George V, 1912, 1913, 1915, 1916 and 1918 Sydney. *Good extremely fine.* (5)

\$900

1373
George V, 1919, 1923 and 1926 Melbourne. *Good extremely fine.* (3)

\$600

1374
George V, 1919-1923 Perth. *Good extremely fine.* (5)

\$850

1375
George V, 1924, 1925 and 1928 Perth. *Nearly uncirculated.* (3)

\$750



1376*
George V, 1926 Perth. *Extremely fine/good extremely fine and very scarce.*

\$2,000



1377*
George V, 1927 Perth. *Contact mark in reverse field otherwise nearly uncirculated.*

\$400

1378
George V, small head, 1929-1931 Perth. *Nearly uncirculated.* (3)

\$600

1379
George V, small head, 1930 Melbourne. *Nearly uncirculated.*

\$350

IMPERIAL HALF SOVEREIGNS



1380*
Queen Victoria, 1871 Sydney. *Nearly extremely fine.*

\$1,000



1381*
Queen Victoria, 1882 Melbourne (McD.024a). *Nearly uncirculated.*

\$7,000



1382*
Queen Victoria, 1883 Sydney (McD.025a). *Nearly extremely fine/extremely fine.*

\$1,200



1383*
Queen Victoria, 1885 Melbourne. *Virtually uncirculated and very rare in this condition.*

\$23,000



1384*
Queen Victoria, Jubilee head, 1887 Melbourne (McD.0332a).
Well struck, nearly uncirculated.

\$1,800



1391*
Queen Victoria, old head, 1893 Sydney. *Nearly uncirculated.*

\$2,500



1385*
Queen Victoria, Jubilee head, 1887 Sydney (McD.032a).
Virtually uncirculated.

\$2,000



1392*
Queen Victoria, 1897 Sydney. *Uncirculated.*

\$1,500



1386*
Queen Victoria, Jubilee head, 1887 Sydney (McD.032a).
Minor surface marks on obverse, otherwise attractive peripheral toning with brilliance, nearly uncirculated.

\$1,800



1393*
Queen Victoria, 1900 Sydney. *Reverse rim bruise at 12 o'clock, otherwise good extremely fine.*

\$1,500



1387*
Queen Victoria, 1889 Sydney. *Extremely fine.*

\$600



1394
Queen Victoria, 1900 Melbourne. *Nearly extremely fine.*

\$350



1388*
Queen Victoria, 1891 Sydney, no J.E.B. (McD.038a). *Nearly uncirculated.*

\$3,000

1395*
Queen Victoria, 1900 Perth. *Nearly extremely fine and rare in this condition.*

\$700



1389*
Queen Victoria, Jubilee head, 1893 Melbourne. *Old peripheral red toning, good very fine/ nearly extremely fine.*

\$450

1396
Edward VII, 1902 Sydney. *Good extremely fine.*

\$150



1390*
Queen Victoria, Jubilee head, 1893 Melbourne. *Minor field marks on obverse, otherwise uncirculated and rare in this condition.*

\$3,000

1397
Edward VII, 1903 Sydney. *Nearly extremely fine.*

\$150



1398*
Edward VII, 1904 Perth. *Nearly extremely fine and rare thus.*

\$1,000

1399
Edward VII, 1907 Melbourne. *Extremely fine.*

\$200

1400
Edward VII, 1908 Melbourne. *Good extremely fine.*

\$300

1401
Edward VII, 1909 Melbourne. *Vertical die break through face, nearly uncirculated.*

\$300



1402*
Edward VII, 1909 Perth. *Nearly extremely fine and rare thus.*

\$600

1403
George V, 1915 Melbourne. *Uncirculated.*

\$120



1404*
George V, 1918 Perth. *Nearly uncirculated and rare.*

\$4,500



1405*
George V, 1918 Perth. *Extremely fine and rare.*

\$3,500



1406*
George V, 1918 Perth. *Good very fine and rare.*

\$2,800

AUSTRALIAN COMMONWEALTH COINS

PATTERNS AND PROOFS

Finest known Birmingham Mint 1914H florin.



1407*
George V, Birmingham Mint proof or specimen florin, 1914H. *A fully sealed patina and brilliant reverse with considerable blue golden iridescence, FDC and excessively rare, the finest of two or three known.*

\$60,000

Ex Birmingham (Heaton) Mint Collection and Spink Australia Sale 8, November 1982 (lot 1223) and Noble Numismatics Sale 45 (lot 1483).

Finest known Birmingham Mint 1915H shilling.



1408*
George V, Birmingham Mint proof or specimen shilling, 1915H. *A fully sealed brilliant grey and slightly iridescent proof specimen, the finest of two or three known, FDC and excessively rare.*

\$60,000

Ex Birmingham (Heaton) Mint Collection and Spink Australia private sale in 1982.

A very rare specimen set of the first coins struck in Australia.



1409*
George V, Melbourne Mint proof or specimen set, 1916M, florin, shilling, sixpence and threepence. *Has been dipped, the sixpence and threepence with brilliant fields, the florin and shilling frosted, the shilling also with characteristic 45° die rotation, nearly FDC and very rare. (4)*

\$50,000

The florin has minor hairline die breaks on the reverse, which is unusual for proof striking but not for these first-ever issues of specimen coins by the Mint. This set, acquired from Downies in 1995, is sold with their ticket.



1410*
George V, Melbourne Mint specimen halfpenny, 1925. *Sharply struck up, obverse semi matte, reverse with die polishing brilliance, dark purple blue brown patina with polished edge and high rims, good extremely fine and very rare as such.*

\$7,500

Ex S.V. Hagley Collection.



1411*
George V, Melbourne Mint proof Canberra florin, 1927. *Light grey tone with some iridescence, nearly FDC and rare.*

\$15,000

Purchased from Spink Australia in 1977.



1412*
George VI, Melbourne Mint proof florin, 1938. *Nearly FDC and rare.*

\$9,000

Purchased from Spink Australia in 1978.



1413*
George VI, Melbourne Mint proof shilling, 1938. *Brilliant, nearly FDC and rare.*

\$7,500



1414*
George VI, Melbourne Mint proof sixpence, 1938. *FDC and rare.*

\$6,000

Purchased from Spink Australia in 1978.



1415*
George VI, Melbourne Mint proof threepence, 1938. *FDC and rare.*

\$4,000

Purchased from Spink Australia in 1978.



1416*
George VI, Melbourne Mint proof threepence, 1938. *Toned, FDC.*

\$4,500

With H.G. Williams N.Z. original sales ticket.



1417*
George VI, Perth Mint proof penny, 1944. *Brilliant mint red on reverse, streaky obverse, toned, otherwise FDC.*

\$15,000

Slabbed by PCGS as PR63RB.

**Melbourne Mint proof pattern penny 1945
 ex Melbourne Mint. Unique in private hands.**



1418*
George VI, Melbourne Mint proof or pattern penny, 1945. *Fully brilliant with golden red obverse, more reddish brown reverse, FDC and excessively rare, the only specimen in private hands.*

\$150,000

Ex Museum of Victoria duplicates Sale (Spink Australia, July 1988, Sale 25, lot 953 and Noble Numismatics Sale 48, lot 1763). Pennies struck in Perth dated 1945 were the only issues supplied to Treasury during the final year of World War II. This coin, along with the shilling of 1945, are among the rarest Commonwealth issues.



part

1419*

Elizabeth II, Melbourne Mint proof sets, 1955-1963, with both matte and satin Perth Mint pennies, 1957 (illus.), included. *Carbon spot at 11 o'clock on both halfpenny and penny, 1955, otherwise FDC and rare.* (55 coins)

\$30,000

1420

Elizabeth II, Melbourne Mint proof set, 1955. *FDC, the penny full brilliant mint red.* (4)

\$750

1421

Elizabeth II, Melbourne Mint proof penny, 1955. *FDC.*

\$400

1422

Elizabeth II, Melbourne Mint proof penny, 1955. *Toned, nearly FDC.*

\$150



1423*

Elizabeth II, Perth Mint proof set, 1955. *Toned, otherwise nearly FDC and rare.* (2)

\$5,000

1424

Elizabeth II, Melbourne Mint proof set, 1956. *The penny brilliant full mint red, one minor carbon spot, otherwise FDC.* (5)

\$750

1425

Elizabeth II, Melbourne Mint proof set, 1956. *FDC.* (5)

\$600

1426

Elizabeth II, Melbourne Mint proof threepence, 1956 and sixpence, 1959. *FDC.* (2)

\$150

1427

Elizabeth II, Melbourne Mint proof penny, 1956. *Nearly FDC.*

\$400

1428

Elizabeth II, Melbourne Mint proof penny, 1956. *Nearly FDC.*

\$200

1429

Elizabeth II, Melbourne Mint proof penny, 1956. *Dark brown red otherwise brilliant FDC.*

\$350



1430*

Elizabeth II, Perth Mint proof penny, 1956. *Slight tone area, otherwise FDC and rare.*

\$3,000



1431*

Elizabeth II, Perth Mint proof penny, 1956. *One or two minute carbon spots, otherwise FDC and rare.*

\$2,500

1432

Elizabeth II, Melbourne Mint proof set, 1957. *FDC.* (4)

\$500

1433

Elizabeth II, Melbourne Mint proof set, 1957, shilling replaced with 1958. *Attractively toned and brilliant, FDC.* (4)

\$500



1434*

Elizabeth II, Perth Mint proof penny, 1957. *Brilliant finish, FDC.*

\$500

1435 Elizabeth II , Perth Mint proof penny, 1957. <i>Matte finish, FDC.</i>	\$400	1448 Elizabeth II , Perth Mint proof set, 1960. <i>FDC.</i> (2)	\$800
1436 Elizabeth II , Melbourne Mint proof set, 1958. <i>Toned, FDC.</i> (5)	\$500	1449 Elizabeth II , Perth Mint proof set, 1960. <i>FDC.</i> (2)	\$800
1437 Elizabeth II , Melbourne Mint proof set, 1958. <i>The penny dull toned, otherwise FDC.</i> (5)	\$450	1450 Elizabeth II , Perth Mint proof penny, 1960. <i>Toned, nearly FDC.</i>	\$150
1438 Elizabeth II , Perth Mint proof penny, 1958. <i>FDC.</i>	\$400	1451 Elizabeth II , Perth Mint proof halfpenny, 1960, penny, 1961. <i>FDC.</i> (2)	\$300
1439 Elizabeth II , Perth Mint proof penny, 1958. <i>Toned otherwise virtually FDC.</i>	\$350	1452 Elizabeth II , Melbourne Mint proof set, 1961. <i>FDC.</i> (4)	\$300
1440 Elizabeth II , Perth Mint proof penny, 1958. <i>Nearly FDC.</i>	\$300	1453 Elizabeth II , Melbourne Mint proof set, 1961. <i>FDC.</i> (4)	\$300
1441 Elizabeth II , Melbourne Mint proof set, 1959. <i>Bronze dark toned otherwise FDC.</i> (6)	\$1,500	1454 Elizabeth II , Melbourne Mint proof silver shilling and sixpence, 1961. <i>FDC.</i> (2)	\$100
1442 Elizabeth II , Melbourne Mint proof set, 1959. <i>Halfpenny and penny toned, otherwise FDC.</i> (4)	\$1,200	1455 Elizabeth II , Perth Mint proof set, 1961. <i>FDC.</i> (2)	\$750
1443 Elizabeth II , Melbourne Mint proof set, 1959. <i>The bronze dark toned, otherwise FDC.</i> (6)	\$1,200	1456 Elizabeth II , Perth Mint proof set, 1961. <i>FDC.</i> (2)	\$750
1444 Elizabeth II , Melbourne Mint proof penny and halfpenny, 1959. <i>Nearly FDC.</i> (2)	\$240	1457 Elizabeth II , Perth Mint proof set, 1961. <i>Halfpenny toned, nearly FDC.</i> (2)	\$300
		1458 Elizabeth II , Perth Mint proof set, 1961. <i>Nearly FDC.</i> (2)	\$300
		1459 Elizabeth II , Perth Mint proof halfpenny, 1961. <i>Full red, FDC.</i>	\$350
		1460 Elizabeth II , Melbourne Mint proof set, 1962. <i>With black plastic case. FDC.</i> (4)	\$350
		1461 Elizabeth II , Melbourne Mint proof set, 1962. <i>FDC.</i> (4)	\$300
		1462 Elizabeth II , Perth Mint proof set, 1962. <i>FDC.</i> (2)	\$750
		1463 Elizabeth II , Perth Mint proof set, 1962. <i>FDC.</i> (2)	\$750



1445* Elizabeth II , Perth Mint proof penny, 1959. <i>FDC.</i>	\$500
1446 Elizabeth II , Melbourne Mint proof set, 1960. <i>FDC.</i> (4)	\$350
1447 Elizabeth II , Melbourne Mint proof set, 1960. <i>FDC.</i> (4)	\$300

- 1464
Elizabeth II, 1962. Perth Mint proof set, 1962. *Halfpenny toned on obverse only, otherwise FDC.* (2)
 \$500
- 1465
Elizabeth II, Perth Mint proof halfpenny, 1962. *Toned with some spotting, nearly FDC.*
 \$100
- 1466
Elizabeth II, Melbourne Mint proof set, 1963. With black plastic case. *FDC.* (4)
 \$300
- 1467
Elizabeth II, Melbourne Mint proof set, 1963. *FDC.* (4)
 \$250
- 1468
Elizabeth II, Melbourne Mint proof set, 1963. *FDC.* (4)
 \$250
- 1469
Elizabeth II, Melbourne Mint proof set, 1963. *FDC.* (4)
 \$250
- 1470
Elizabeth II, Melbourne Mint proof set, 1963. *FDC.* (4)
 \$250
- 1471
Elizabeth II, Melbourne Mint proof set, 1963. *FDC.* (4)
 \$200
- 1472
Elizabeth II, Melbourne Mint proof silver shilling, sixpence and threepence, 1963. *FDC.* (3)
 \$150
- 1473
Elizabeth II, Melbourne Mint, silver proof set, mixed dates, florin 1963, shilling and sixpence 1960, and threepence 1958. *FDC.* (4)
 \$400



- 1474*
Elizabeth II, Perth Mint proof set, 1963. *FDC.* (2)
 \$1,000
- 1475
Elizabeth II, Perth Mint proof set, 1963. *Full red, FDC.* (2)
 \$1,000

- 1476
Elizabeth II, Perth Mint proof set, 1963. *FDC.* (2)
 \$1,000
- 1477
Elizabeth II, Perth Mint proof set, 1963. *Toned, nearly FDC.* (2)
 \$600
- 1478
Elizabeth II, Perth Mint proof penny, 1963. *FDC.*
 \$500
- 1479
Elizabeth II, Perth Mint proof penny, 1963. *Nearly FDC.*
 \$300
- 1480
Elizabeth II, Perth Mint halfpenny, 1963. *Two small carbon spots, nearly FDC.*
 \$150

CROWNS

- 1481
George VI, 1937. *Full mint bloom, uncirculated.*
 \$100
- 1482
George VI, 1938. *Good extremely fine.*
 \$200

FLORINS



- 1483*
Edward VII, 1910. *Full original mint bloom, well struck uncirculated.*
 \$2,500

Purchased from Spnk Australia in 1977.



- 1484*
Edward VII, 1910. *Light steel blue and silver tone, good extremely fine.*
 \$750



1485*
George V, 1912. *Well struck, some mint bloom, nearly uncirculated and rare in this condition.*

\$4,000



1490*
George V, 1918M. *Considerable original mint bloom, nearly uncirculated.*

\$600



1486*
George V, 1913. *Series of contact marks above the shield and elsewhere, otherwise nearly uncirculated and rare in this condition.*

\$2,500



1491*
George V, 1919M. *Some mint bloom, nearly extremely fine.*

\$450

Purchased from Spink Australia 18/7/1980.



1487*
George V, 1915H. *Well struck for 1915H, full mint bloom, choice uncirculated and rare in this condition.*

\$8,000



1492*
George V, 1922. *Well struck for 1922, minor contact mark on cheek, otherwise full mint bloom choice uncirculated and rare in this condition, one of the finest known.*

\$6,000



1488*
George V, 1916M. *Contact mark in left field, otherwise choice uncirculated.*

\$2,500



1493*
George V, 1923. *Lightly toned, extremely fine or better.*

\$900



1489*
George V, 1917M. *Full mint bloom, a few minor obverse contact marks, uncirculated/ choice uncirculated.*

\$1,800



1494*
George V, 1924. *Softly struck on reverse, the serif end of the 4 nearly absent, full subdued golden red brown sealed original mint bloom, choice uncirculated.*

\$3,000



1495*
George V, 1924. *Golden tone, good extremely fine/ nearly uncirculated.*

\$1,200

Purchased from Spink Australia in 1977.



1500*
George V, 1928. *Full original mint bloom, contact mark on King's cheek bone, otherwise uncirculated.*

\$750



1496*
George V, 1925. *Polished and cleaned, otherwise extremely fine/ good extremely fine.*

\$180



1501*
George V, 1928. *Nearly full original mint bloom, virtually uncirculated.*

\$450



1497*
George V, 1926. *Unusually well struck on reverse for this date and rare thus, nearly uncirculated/ uncirculated.*

\$2,000



1502*
George V, 1928. *Dull toned obverse nearly uncirculated, die flaws around emu.*

\$400



1498*
George V, 1927. *Full frosty mint bloom, lightly toned on the obverse, uncirculated.*

\$750



1503*
George V, 1931. *Considerable grey blue mint bloom, obverse toned, uncirculated.*

\$400



1499*
George V, 1927. *Nearly full mint bloom, virtually uncirculated.*

\$500



1504*
George V, 1932. *Very fine/ good very fine and rare in this condition.*

\$400



1505*
George V, 1934. *Well struck as usual, lightly toned nearly uncirculated.*

\$600



1506*
George V, 1934-35 Melbourne Centenary. *Well struck with choice fields, uncirculated.*

\$350



1507*
George V, 1935. *Nearly full original mint bloom, uncirculated.*

\$1,500



1508*
George V, 1936. *Subdued underlying full mint bloom, uncirculated.*

\$220



1509*
George VI, 1939. *Full original mint bloom, uncirculated and rare thus.*

\$600

SHILLINGS



1510*
Edward VII, 1910. *Lightly toned, uncirculated.*

\$250

Purchased from Spink Australia in 1977.



1511*
George V, 1911. *Extremely fine or better.*

\$250



1512*
George V, 1912. *Softly struck on the reverse, good extremely fine and rare in this condition.*

\$1,500

1513
George V, 1914, 1917M and 1918M. *Some mint bloom and toning on the last two, nearly extremely fine or better. (3)*

\$300



1514*
George V, 1915. *Good extremely fine and rare in this condition.*

\$2,000



1515*
George V, 1915H. *Deep blue grey toned sealed surface, uncirculated and very rare, one of the finest known.*

\$15,000

Ex Ray Jewell Collection.



1516*

George V, 1915H. *Light reddish golden toning, considerable mint bloom, emu feathers not struck up as usual, nearly uncirculated and very rare in this condition.*

\$3,000



1517*

George V, 1916M. *Well struck, toned nearly uncirculated and specimen-like.*

\$1,200



1518*

George V, 1918M. *Original toned mint bloom, uncirculated.*

\$400



1519*

George V, 1924. *Extremely fine.*

\$250



1520*

George V, 1925. *Trace of top left of a 3 behind the back of the 5, considerable mint bloom, uncirculated.*

\$600



1521*

George V, 1931. *Well struck, minor hairline scratch above emu's back otherwise uncirculated.*

\$400



1522*

George V, 1934. *Uncirculated.*

\$750



1523*

George V, 1935. *Struck with high rims, considerable mint bloom, nearly uncirculated.*

\$350



1524*

George V, 1936. *Pearl or satin-like mint bloom, nearly uncirculated.*

\$150



1525*

George VI, 1940. *Cleaned, otherwise good extremely fine and scarce thus.*

\$200

SIXPENCES



1526*

Edward VII, 1910. *Full mint bloom, uncirculated.*

\$150



1527*

George V, 1911. *Minor scratches, especially on the obverse, otherwise good extremely fine/ nearly uncirculated.*

\$450



1528*
George V, 1912. *Full frosted mint bloom, choice uncirculated and very rare thus.*

\$3,000



1535*
George V, 1923. *Slightly toned, nearly uncirculated.*

\$750



1529*
George V, 1912. *Some peripheral toning, good extremely fine/ nearly uncirculated and rare in this condition.*

\$750



1536*
George V, 1924. *Three long die breaks on the upper reverse, dark iridescent toned, nearly uncirculated and rare.*

\$1,250



1530*
George V, 1914. *Nearly uncirculated.*

\$750



1537*
George V, 1925. *Full mint bloom on the reverse, uncirculated/ choice uncirculated and rare thus.*

\$1,000



1531*
George V, 1917M. *Dark toned, relatively mark free with only frictional wear on emu's feather, otherwise nearly uncirculated.*

\$650



1538*
George V, 1926. *Some toning, uncirculated.*

\$350



1532*
George V, 1918M. *Brushed to clean, good extremely fine and rare.*

\$1,500



1539*
George V, 1928. *Uncirculated.*

\$500



1533*
George V, 1921. *Nearly full original mint bloom, lightly toned, uncirculated.*

\$400



1540*
George V, 1928. *Obverse rim nicks, nearly uncirculated/ uncirculated.*

\$300



1534*
George V, 1922. *Well struck for 1922, cleaned good extremely fine and rare.*

\$1,250



1541*
George V, 1936. *Proof-like uncirculated and rare thus.*

\$750

1542
George V, 1936. Lightly toned, uncirculated.

\$220

Sealed in plastic flip as MS 63 in ACGS.



1543
George V, 1936. Lightly toned uncirculated.

\$100

1544
George VI, 1938. Toned uncirculated.

\$60

Sealed in plastic flip as MS 63 by ACGS.



1545*
George VI, 1952. Uncirculated.

\$400



1546*
Elizabeth II, 1953. Full original mint bloom, uncirculated.
\$250

THREEPENCES



1547*
Edward VII, 1910. Uncirculated.

\$100



1548*
George V, 1911. Peripheral toning, nearly uncirculated/uncirculated.

\$150



1549*
George V, 1912. Nearly full original mint bloom, uncirculated and rare.

\$1,500

Slabbed as MS63 by Accugrade.

1550*
George V, 1912. Lightly toned, nearly uncirculated and rare.

\$800



1551*
George V, 1912. Lightly toned, nearly uncirculated/uncirculated.

\$500



1552*
George V, 1914. Die break on reverse, good extremely fine.

\$450



1553*
George V, 1915. Extremely fine/ good extremely fine and rare in this condition.

\$2,000



1554*
George V, 1915. Die break from rim to scroll under emu, extremely fine/ good extremely fine.

\$1,000



1555*
George V, 1916M. Slight toning, full original mint bloom, uncirculated.

\$350



1556*
George V, 1917M. Full mint bloom, scuff mark on obverse, long die break through reverse with weak top right quarter to shield, otherwise uncirculated.

\$100

1557

George V, 1918M and 1919M. Good extremely fine; extremely fine. (2)

\$100



1558

George V, 1921M. Nearly uncirculated.

\$120



1559*

George V, 1921. Struck from clashed obverse die, extremely fine/good extremely fine and rare.

\$750



1560*

George V, 1922/1 overdate. Clear rims both sides, full ear on king visible, full Advance Australia readable, very good/nearly fine and very rare, a clear overdate.

\$8,000



1561*

George V, 1922/1 overdate. Evenly worn, only good but rare.

\$3,000

Purchased from Spink Australia in 1987.



1562*

George V, 1922. Top right quarter of shield weak, interesting raised semi circular striations behind head, nearly uncirculated/ brilliant uncirculated the reverse proof-like.

\$150



1563*

George V, 1923. Nearly extremely fine/ good extremely fine and rare.

\$1,500

1564*

George V, 1925. Struck from clashed reverse die, uncirculated/ choice uncirculated with light tone.

\$450



1565*

George V, 1926. Nearly uncirculated.

\$150

1566

George V, 1934. Lightly toned uncirculated.

\$200

Sealed in plastic flip as MS63 by ACGS.

1567

George VI, 1942. Good very fine and rare in this condition.

\$150

PENNIES



1568*

George V, 1911 and 1913. The first oiled, otherwise extremely fine/ good extremely fine the second with some mint red, nearly uncirculated but softly struck on obverse. (2)

\$800



1569*

George V, 1914. Brown and red, nearly uncirculated and rare in this condition.

\$750



1570*

George V, 1917I. *Red and brown uncirculated.*

\$250



1575*

George V, 1921, *Indian die. Brown and red, nearly uncirculated.*

\$750



1571*

George V, 1917I. *Brown and red, nearly uncirculated/uncirculated.*

\$200



1576*

George V, 1923. *Mostly brown, traces of mint red, uncirculated.*

\$600



1572*

George V, 1920 dot below scroll, *Indian die. Nearly full original mint bloom, lightly toned, choice uncirculated and rare in this condition.*

\$1,500



1577*

George V, 1924, *London die. Medium glossy brown patina, good extremely fine.*

\$250



1573*

George V, 1920 dot below scroll, *Indian die. Grey brown with traces of red, nearly uncirculated.*

\$500

1578

George V, 1925. *Good fine - nearly very fine. (4)*

\$500



1579*

George V, 1927, *London die. Glossy brown and slight red, rusty reverse die, nearly uncirculated.*

\$250



1574*

George V, 1920 dot above top scroll only, *Indian die. Brown and faded mint red, nearly uncirculated and excessively rare in this condition, possibly the finest known.*

\$6,000



1580*

George V, 1927, *London die. Obverse dull otherwise, red and brown, uncirculated.*

\$150



1581*
George V, 1930. *Even brown patina, six clear pearls, rim on obverse unmarked, good fine/ nearly very fine.*

\$20,000



1586*
George V, 1933/2 overdate. *Red and brown uncirculated and very rare thus, probably the third finest known.*

\$1,000

Ex Spink Australia Sale 7 (lot 902)



1582*
George V, 1930. *Six clear pearls, even brown patina, nearly very fine and rare.*

\$18,000



1587*
George V, 1934. *Glossy red and brown uncirculated.*

\$250



1588
George V, 1933, 1934, 1935. *The last cleaned and re-toned, the others brown and nearly uncirculated. (3)*

\$200

1583*
George V, 1930. *Has been cleaned and retoned long ago otherwise six clear pearls, good fine/ nearly very fine and rare.*

\$15,000



part

1589*
George VI, 1946. *Glossy brown patinas, nearly extremely fine with slight die clashing evident. (2)*

\$200



1584*
George V, 1931, Indian die. *Attractive subdued brown mint bloom, nearly uncirculated/ uncirculated and rare in this condition.*

\$750

HALFPENNIES



1585*
George V, 1931, dropped 1, Indian die. *Good fine/ nearly very fine and very rare.*

\$1,500



1590*
George V, 1914. *Brown with traces of mint red, nearly uncirculated.*

\$200



1591*

George V, 1915H. *Softly struck on obverse as usual, glossy grey and red brown nearly uncirculated and rare.*

\$2,000



1597*

George V, 1924. *Contact mark on obverse, browning extremely fine/ nearly uncirculated and rare.*

\$320

1592

George V, 1916I and 1920. *Extremely fine; nearly uncirculated. (2)*

\$100



1598*

George V, 1925. *Uneven tone, with some mint red, uncirculated.*

\$1,200



1593*

George V, 1919. *Red and brown uncirculated.*

\$500

Slabbed as MS 66 RB by NGCA.

1599

George V, 1926, 1927, 1936. *The first dipped but showing raised die polishing striations on the reverse and die rust on the obverse, the others toned with traces of red, good extremely fine. (3)*

\$100



1600

George V, 1926 and 1928. *Glossy brown good extremely fine and extremely fine. (2)*

\$200

1594*

George V, 1923. *Even dark brown patina, diagnostic die breaks both sides, highest two pearls joined, good very fine and rare in this condition.*

\$5,000

1601

George V, 1932, 1933 (2). *Brown good extremely fine - nearly uncirculated. (3)*

\$120



1595*

George V, 1923. *Attractive brown patina with minimal wear. Very fine or better.*

\$2,000



1602*

George V, 1933-1936. *The second (illustrated) brown and red uncirculated, the others glossy good extremely fine - nearly uncirculated. (4)*

\$400



1596*

George V, 1923. *Diagnostic die breaks on reverse, six pearls visible in crown, good fine.*

\$1,500