
Session 9

SPORTING & GENERAL MEDALS, BADGES & AWARDS (PART 6)

MISCELLANEOUS - NON-SPORTING (1856 - 1970)

2396*

Switzerland, Industrial Arts medal, struck in silver (35mm), by A.Bovy, top suspender with striped ribbon, reverse inscribed 'Prix/D'Horlogerie de/Geneve/Chs.Lezard/1856'. *Very fine, in a contemporary fitted case.*

\$1,200

Charles Lezard was an early New Zealand Silversmith and an ex-Councillor of the City of Christchurch, he was born in London in 1838, where he was educated and apprenticed to the watchmakers and jewellers' trade in the Horological School at Geneva, serving for seven years. Mr Lezard landed at Port Chalmers from the ship "Oliver Cromwell," in 1862, and at once settled in Canterbury, establishing the business which he conducted in High Street. He was a member of No. 9 Company of Volunteers in the Canterbury Battalion from 1863 to 1868, and obtained the rank of Lieutenant. He was initiated in the Masonic Order in London, but was unattached in New Zealand. Mr Lezard was also an old member of the American Order of Oddfellows. He was married in 1865 to a daughter of Mr Jacob Schwartz, of Bavaria, and had two sons and eight daughters.



2397*

Secretary for Crown Lands, New Zealand, a uniface struck impression on a British Queen Victoria copper penny of 185(3), (36mm), pierced at top for suspension, possibly an ID tag or a trial piece, possibly the work of Anton Tuetenberg, Auckland (see note below). *Very fine.*

\$1,500

From the pen of Jim Duncan, Auckland.

ANOTHER NEW TEUTENBERG PIECE ?

We'll probably never know, but there certainly is a good possibility that it is. The item is a copper (not bronze) penny of Victoria's reign, which has been used as a flan for a trial of an oval seal. The coin measures c36mm, and the seal measures 28 x 32mm, so it is a horizontal oval. (28mm was his favourite medal size!)

The seal is composed of the Royal Arms of Great Britain - the Lion and Unicorn with a crowned oval shield between them. They stand on a ribbon which probably said DIEU ET MON DROIT, but this is too worn to read now. (The piece probably grades Fine to Very Fine) The legend around the top is SECRETARY FOR CROWN LANDS and around the bottom is NEW ZEALAND. It has been holed at the top, and curiously, the punch which made the hole was square, since the reverse of the penny has a square hole and the obverse a round one with a raised edge. It is still possible to see V - - - T O R - - with the hole through ICT, and GRATIA in full at the bottom. Tantalisingly, outside the letters CRE of Secretary the digits of the original date almost appear, only sufficiently enough to say it was probably an 1853, 1855 or 1859 coin.

The reverse, which should have the seated Britannia has absolutely no vestige of anything - no lettering, nothing. There is ink or pencil graffiti on the back, but it is not legible, and cannot be connected with the front, in my opinion. There are two clamp marks on the rim where the piece was held in, probably, a vice, although why it needed a vice I do not know, given the total obliteration of the reverse.

When first I saw the piece on my computer I was not convinced that it was by Teutenberg, but now that I have handled it, and photographed it, I feel there is a very good likelihood that it is.

My curiosity regarding the title Secretary for Crown Lands took me to Google, where I discovered a series of articles in 'The New Zealand Railways Magazine' of May 1934, about Alfred Domett. Aucklanders will probably recognise the name Domett Avenue in Epsom. It seems that Domett emigrated from England to Nelson in 1842, was found to have some administrative ability and became Colonial Secretary for part of the North and all the South Island. He later became a Magistrate in Napier, then returned to Nelson where he was elected to the Provincial Council and then to the General Assembly. In 1862 Sir George Grey asked Domett to form a Ministry, and he was in office as Prime Minister for about a year, in 1863. On resigning in c1864, he was appointed Secretary for Crown Lands, and sat on the Legislative Council. This meant he wore two hats - a senior civil servant, and a member of the Legislature. In 1870 a disqualifying Act was passed preventing this - with a special clause exempting Alfred Domett. Teutenberg arrived in New Zealand in 1866, which is good timing. Domett returned to England in 1871 at 60 years of age, and was awarded the C.M.G. in 1880. He died in 1887. As a hobby he wrote poetry. One of his other 'leisure' activities while in New Zealand was to do the foundation work for what we now know as the General Assembly Library. Curiously, this unusual piece was found in Napier! (The magazine piece does not say where he was domiciled as Secretary).

We cannot say that this "trial" piece was for a seal for Alfred Domett, but we can say that there are circumstances which make it possible. It joins a group of pieces about which we know something and must guess other things. Keeps life interesting!

With research.



2398*
Cobb & Co.'s Telegraph Line of Royal Mail Coaches, c1865, ticket from Maungatawhiri Creek to Auckland, in the name of James Fenton, dated March (18?). *Some foxing, otherwise very fine and excessively rare.*

\$1,000

The following courtesy National Library of New Zealand - Papers Past - from "Lyttelton Times" 7 June 1864:

"Messrs. Quick and Co., the proprietors of a new line of coaches to be started in Auckland under the title of Cobb's Telegraph line of coaches, give notice that on and after Wednesday the 25th instant, a six-horse coach will leave the booking office in Queen street, at six o'clock a.m. daily, for Otahuhu, Drury, and Queen's Redoubt, and that one will leave the Queen's Redoubt, at 10 a.m. daily, for Auckland. This will be a great assistance to the many who now have occasion to go to the Queen's Redoubt on their way further up the Waikato, and we hope to see their line extended to Rangiriri before long. A considerable addition to the present conveyances for passengers to Drury has long been wanted, and Messrs. Quick and Co.'s vehicles doubtless will find their services highly appreciated by all."

With further research indicating that James Fenton was deceased by 9 August 1865.



lot 2399

2399*
Harrop & Neil, Dunedin, c1870s, stock medal, struck uniface in silver (44mm), ring top suspension, signed below on reverse. *Toned, extremely fine and extremely rare.*

\$800

Ex Leon G. Morel Collection, purchased privately May 2009.

2400
Stock medal, c1870s, in silver (25x25mm), by Beeby (C. Beeby, Dunedin), ring top with suspender, missing centre piece on obverse, uninscribed. *Fine.*

\$70



2401*
G. Tombs & Co., c1880s, struck uniface in bronze (63mm), no maker, obverse inscribed 'G. Tombs & Co./Printers/and/Bookbinders', reverse blank. *Very fine.*

\$450

George Tombs was a partner of Whitcombe & Tombs which began in 1882 in Cashel Street, Christchurch, as a partnership between a teacher of French who had become a bookseller, George Hawkes Whitcombe, and printer George Tombs.

2402*
Band of Hope, Rangitata Island, pledge ticket, uniface, printed on paper, 19 August 1885, No.38, George Barney. *Very fine.*

\$100



2403*
Silver vesta case, (31.5g, 40x25mm), by Kohn, c1889, ring top suspension, front inscribed 'To/W.B.Rhodes/From/M.R. & Co's Employees/31.7.89'. *Fine and rare, worthy of further research.*

\$350

2404
Badges and medals, New Zealand & South Seas Exhibition, 1889-90, in silver (M.1889-90/2) damaged reverse; Nelson College, badge in gold by Louis Kerr; Southbrook Swim Champ silver fob, 1930; Royal Visit, 1949, tin badges (2); silver sword & shield badge c1950s, 'L.L.' attributed to Patoni; Te Rapa Dairy Factory (M&P.1992/14). *Fair - uncirculated.* (7)

\$300



2405*
New Zealand Girls Friendly Society, c1890s, struck in bronze (33x21mm), no maker, ring top suspender broken off. *Good fine and rare.*

\$250

The Girls' Friendly Society was started in New Zealand in 1883 by Lady Jervois. Initially its main aim was to provide support for girls immigrating to New Zealand. Society associates were to meet all ships and trains arriving in Wellington, welcome the girls, give them a cup of tea and find them a place to board until they were settled. Other activities included factory visits and instruction. Eventually other branches were started and buildings purchased to provide hostel accommodation for members.

2406
New Zealand Girls Friendly Society, c1890s, struck in bronze (33x21mm), no maker. *Glue remnants on reverse, otherwise very fine.*

\$250



2407*
New Zealand Girls Friendly Society, c1890s, struck in bronze (32x21mm), no maker, ring top suspension; also, GFS, 21 Years Membership badge, struck in silver (25mm), English maker and hallmark, pin-back. *Very fine.* (2)

\$100

2408
New Zealand Girls Friendly Society, c1890s, struck in bronze (32x21mm), no maker, ring top suspension. *Very fine.*

\$100

2409
New Zealand Farmers' Cooperative Association of Canterbury Ld, Christchurch, 189-, bill of exchange printing copperplate (85x254mm), reverse with impressed oval stamp, 'Hughes & Kimber (Limited)/Manufacturers/London E.C.' *In envelope bearing the plate's impression, the envelope damaged, the plate very fine.*

\$100

Hughes & Kimber were renowned 19th century manufacturers of copperplates for printing, engraving, maps, fine etching, line and other high class engraving. The firm also manufactured large steam driven lithographic presses.

Ex Noble Numismatics Sale 103, 13-15 August 2013 (lot 2709).

2410
Canterbury Rowing Club, silver plaque (62x35mm), no maker, stud back, inscribed '1890-1/Christchurch Regatta/and/Wellington Regatta/Senior Fours/won by/Canterbury Rowing Club/N.L.Macbeth.Bow'; Lancaster Park Life Member's badge, struck uniface in bronze and enamel (29x22mm), by Moller, Dn, missing ring top, reverse inscribed 'Mr N.L.MacBeth/90'; copper lithograph plate (93x60mm), in an envelope of Whitcombe & Tombs Limited, inscribed 'Mr W.N.Macbeth/59 Mansfield Avenue'; Navy League Special Service Medal, in silver and enamel (30x28mm), English maker and hallmark, ring top, ribbon and bar with pin-back suspension, reverse inscribed 'Miss. Macbeth'. *Very fine.* (4)

\$300



part

2411*

Surrey Football Club (Wellington), handcrafted in silver (40x40mm), by J.King (James King, Wellington), reverse inscribed 'Presd. By Wm.King/To/Surrey Football Club/For Best Allround Player/Won By/W.J.Barlow/15-8-91' [illustrated]; (5) medals attributed to A.J.Barlow: Paraparamu Sports, 1927 Club Relay, stock medal in silver (33x28mm), by 'WA', hallmark for Birmingham 1923; W.A.A.C., struck in silver (30mm), unknown maker, obverse inscribed 'Jubilee Meeting/4-2-28/A.J.Barlow/1st/220 Hdcp' [illustrated]; Dewar Shield, 1929, struck in bronze (30mm), reverse inscribed 'High Jump/Wellington'; stock medal in silver (30x25mm) with gold shield on obverse, unknown maker, inscribed 'A.J.B.' on shield; handcrafted in silver (22mm) featuring profile of a woman on obverse (swimming?), reverse blank, all with ring top suspensions. *Fine - very fine.* (6)

\$250



2412*

U.S.S.Co. (Union Steamship Company), hand engraved on the smoothed out obverse of a British, Queen Victoria, shilling, 1891, features the Company's flag and inscribed initials JFS/FS. *Very fine.*

\$50

Ex Leon G.Morel Collection, purchased privately May 2009.



part

2413*

E.C.A.S.C. (East Coast Amateur Sports Club), handcrafted in silver (35x26mm), no maker, ring top suspension, reverse inscribed 'E.C.A.S.C./Championship/of N.Z/100 Yds/W.Crow/Second/Feb.27/1892'; another, as last, reverse inscribed '1/4 Mile Champ/Second/Mar 2, 1892/Won by/W/Crow/Time.'; The St John Ambulance Association, membership badge, struck in copper (36mm), no maker, ring top suspension, reverse inscribed 'A.Crow/No.50774/1898'; N.P.H.S. (New Plymouth High School), uniface, struck in bronze (35mm), no maker, reverse inscribed 'Boxing/1924/Under 5st.Champ/B.Crow'. *Fine - good very fine, the first illustrated.* (4)

\$350



2414*

Token of Esteem, 1892, hollow, in gold (probably 9ct, 7.5g, 31x8mm), no maker, ring top suspension, inscribed on obverse 'Presented To/A.M.Sutherland//By His/Numerous Friends/In/Palmerston & Waihemo/As a/Token of Their Esteem/on his/Leaving the District/June 1892'. *Fine.*

\$300



2415*

Weatherstones, appreciation fob medal, hand engraved in gold (9ct, 5.6g, 28x28mm), no maker, ring top suspension, reverse inscribed 'To/J.K.Simpson/From His/Friends in Weatherstones/10th Feb 1892'. *Fine.*

\$350

Weatherstones is a small settlement near Lawrence in Central Otago. From some research it is probable that J.K.Simpson was one of the proprietors at the Weatherstones brewery (now an historic site) at the time.



2416*

Family Group. Fob medal, handcrafted in silver with gold (35x32mm), no maker, ring top suspension, reverse inscribed 'Annual Race/Won By/Fred.Spraggon/1893' (worn); N.S.R.C. (North Shore Rowing Club), fob medal, handcrafted in silver and gold (25mm), no maker, ring top suspension, reverse inscribed 'N.S.R.C./Won By P.Spraggon Cox/Regatta & Trial Fours/Dewar Shield/Season 1912-13'; N.S.R.C., Kohn Trophies, fob medal, handcrafted in silver and gold (33x28mm), by Kohn, Auck., ring top suspension, reverse inscribed 'N.S.R.C./1913/Trial Fours/Presented/By/F.Diddams.Mgr./Won By -'; N.R.A. (National Rowing Association), badge (oar), handcrafted in silver (75x11cm); Kia Ora N.Z., bob medal, uniface struck in silver (27mm), no maker, ring top suspension, reverse inscribed 'M.Spraggon/7 Allenby Av./Devonport' (M.K/1); Seddon Memorial Technical College, Auckland, fob medal for swimming, struck in silver (27mm), no maker, ring top suspension, reverse inscribed 'M.Spraggon/2 Miles/1919'; S. (A.?) T.C., prize badge, in silver and gold (28x22mm), English maker and hallmark, pin-back, reverse inscribed 'Drill Championship/Upper School/Margorie Spraggon/1919'. *Very good - extremely fine.* (7)

\$950

The following Courtesy National Library of New Zealand - Papers Past - from the 'Auckland Star' 3 May 1893:

".....At the conclusion the Mayor, after some suitable remarks, presented a gold medal to Mr Fred. Spraggon, the winner of the recent ten-mile race. The medal was subscribed for by Colonel Goring and several other gentlemen....."



2417*

Christchurch Gymnasium, badge in silver and blue enamel (55x35mm), by Vaughton, Birmingham, hallmark for Birmingham 1897. *Extremely fine.*

\$250

lot 2416 part



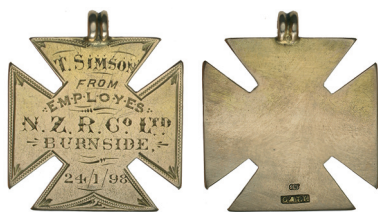
2418*
Bunnythorpe, fob medal, hand engraved in silver (30x30mm), English maker and hallmark, obverse inscribed 'C.Jansen', reverse inscribed 'For Good/Work/Done/Bunnythorpe/1898'. *Fine.*

\$100



2421*
Maori Whare, brooch, handcrafted in silver (45x15mm), by S.Bros, hallmark for Birmingham 1899, pin-back. *Very fine.*

\$150



2419*
N.Z.R. (New Zealand Refrigeration) Co.Ltd., 1898, hand engraved in gold (9ct, 5.6g, 23x23mm), by G.& T.Y (G & T Young, Dunedin), ring top suspension, reverse inscribed 'T.Simson/From/Employes(sic)/N.Z.R. Co. Ltd./Burnside/24-1-98'. *Very fine.*

\$250



2422*
Silver brooch, 'A Maori Whare', handcrafted in voided silver (45x15mm), by S.Bros, hallmark for Birmingham 1899, pin-back. *Extremely fine.*

\$200



2420*
Gold mining brooch, late 19th century, 'New Zealand', handcrafted in gold (9ct, 2.9g, 48x25mm) and set at each end with an amethyst, no maker, pin-back. *Fine.*

\$1,000

Whilst brooches of this ilk are sometimes seen from South Africa or Australia a New Zealand made piece is very rare.



2423*
Samoa, handcrafted fob pendant, 1899, gold bearing quartz with ornate mount in gold (possibly 15ct, tot wt (incl stone) 4.9g, 33x15mm), no maker, ring top suspension, inscribed on one side 'E.M.B.', and on the other side 'Manuia' (best wishes), also finely inscribed around edge 'Ole Faamanatu i Ulai 3.99 Male Malaga Fiafia'. *Extremely fine.*

\$1,500

The inscription around the edge translates into English as 'In Remembrance July 3.99 Happy Voyage'.

Said to be the only known 19th Century Samoan fob.



2424*
 Brass drawer handles, c1900, (110x60mm) (3) and (65x40mm) (2, one illustrated), no maker (Anton Tuetenberg, Auckland) (D&C.plate LXIX). *Fine - very fine.* (5)

\$600



2425*
 A & T Burt Ltd, c1900, uniface, thin oval plaque in tin (56x39mm), letters impressed, 'Wades Patent' (Skylights). *Tone spots, fine.*

\$100



2426*
 'Diamond Buckles', c1900, inscribed badge, handcrafted in voided silver (45x35mm), by G.T.W. (G.T.White, Wellington and Christchurch). *Very fine.*

\$150

Possibly a shoe brand advertising piece or a sporting team badge.



2427*
 Die, Maori motif, in steel (45x32x15mm), together with trial strike from the die in copper (60x33mm), both by (Anton Tuetenberg, Auckland) (D&C.-). *Very fine.* (2)

\$400

Private purchase from the Teutenberg family, June 2013.



2428*

Drawer handle, c1900, struck in bronzed brass (105x58mm), no maker (Anton Teutenberg, Auckland), pierced in four places for attachment (D&C. plate LXIX). *Very fine and very rare.*

\$500

2429

Fob cloth band, c1900, with gold (9ct) fittings, central hand engraved shield inscribed 'Presented To/D.Hunter/From his/Fellow/Employees'. *Very fine.*

\$200



2430*

Fob medal, c1900, possibly 'VP', uniface, struck in silver (32x23mm), unknown maker, ring top with bar inscribed 'Dunedin Branch', pin-back. *Very fine.*

\$80



2431*

Four brass seal master dies, c1900, (by Anton Teutenberg, Auckland), Parnell Soap Factory, Auckland N.Z. (62x39mm), screw back (D&C.V6); J.C.Burleich (47x30mm), screw back (D&C.V6); Scalp Soap (47x30mm), screw back (D&C.V6); Orange Lodge (50x40mm), tube back (D&C.V9), refer D&C plates XLIX & L. *Fine.* (4)

\$800

Ex Dunbar Sloane, Auckland, Auction 13-14 November 2013 (lot 606) and the Brian Teutenberg Collection.



2432*

Greenstone (Pounamu) heart pendant, c1900, handcrafted, with gold fittings (50x45mm), no maker, ornate gold ring top suspension. *Extremely fine.*

\$400

In a box by J.W.Krause, Jeweller, Petone.



2433*
Greenstone fob, c1900 (28x28mm) with gold NZ shield on front, no maker, ring top suspension. *Fine.*

\$150

2434
Kiwi and fern leaves, c1900, fob medal handcrafted in voided gold (9ct, 1.2g, 20mm), no maker, ring top suspension, housed in a small wooden colonial box. *Very fine.*

\$150



2438*
NZ, souvenir stick-pin, c1900, in greenstone with 9ct gold fittings (77x17mm), no maker, pin-back. *Extremely fine.*

\$150



2435*
Lamb Bros Limited, Wellington, c1900, name tablet, uniface, struck probably in copper (45mm). *Some corrosion with letters a little indistinct, otherwise fine.*

\$100

Lamb Brothers probably a firm of Real Estate Agents.

2436
Metal dies, c1900, 'Routledge Kennedy & Co, Napier' (33x23x15mm); Thomson Lewis & Co, Wellington/Wanganui (38x15mm); 'John Lysaght Limited, Wellington' (33x25x10mm) and 'The Residency. Rarotonga. Eastern Pacific.' (52x18x12mm). *Some rusting, otherwise very fine.* (4)

\$350



2439*
Sweetheart's pendant, c1900, heart shaped New Zealand greenstone (40x36mm), no maker, with 9ct gold suspension and across the centre of the heart a 9ct gold fern leaf imposed upon which is the word 'MIZPAH'. *Very fine.*

\$100

MIZPAH jewellery represents an emotional bond between loved ones who are separated, physically or by death, and was used on jewellery particularly in WWI.

Ex Noble Numismatics Sale 94 (lot 1330).



2437*
New Zealand, sovereign case, c1900, in nickel, decorated on the front in enamel with a New Zealand scene (35mm), ring top suspension. *Very fine.*

\$300

Possibly ex a Spink Australia Auction.

2440
Teutenberg, Anton, Auckland, a collection of medal bars, buttons and trials, also a small screw back die, some signed, in silver, copper and brass. *Fine - very fine.* (18)

\$500

Private purchase from the Teutenberg family, June 2013.



lot 2441

2441*

Fob medal, handcrafted in **gold** (15ct, 6.2g, 33x28mm), English maker and hallmark, ring top suspension, reverse inscribed 'M.H.Thomson/From/Riccarton Friends/March 14/1902'. *Good very fine.*

\$250



2442

Silver fob medals, Milton Challenge Cup, 1902; North Taranaki Tug-o-War Schools Championship, 1913; Hutt Gala Day, 1923; Ngatapa Sports, Novice Fling, 1950; Matamata Amateur Competitions, Highland Fling (undated), two with English marker's and hallmarks, four with ring top suspensions, all inscribed. *Fine - very fine.* (5)

\$200



2445*

Presentation fob medal, hand engraved in **gold** (9ct, 4.8g, 33mm), by J.H. (James Howden, Auckland), ring top suspension, reverse inscribed 'W.E.Moyle/From/Fellow Employees/5.3.04'. *Very Fine.*

\$200

2446

Presentation plaque, hand engraved in silver (64x35mm), no maker, two pin fasteners on back, inscribed on front, 'Presented/To/Leslie Hunt/By/Timaru Friends/17-8-04'. *Toned, very fine.*

\$120



2443*

Cuff links, monogrammed 'LT' trial strikes, in copper (38x26mm) and brass (37x26mm), by (Anton Teutenberg, Auckland), for his son's (Ludwig Arnold Berthold Teutenberg, 1882-1945) 21st Birthday (1903) (cfD&C. W5). *Very fine.* (2)

\$300

Private purchase from the Teutenberg family, June 2013.

Duncan and Cresswell note that the NSA Collection holds the masters for these cufflinks.

2447*

Attendance medal, handcrafted in silver (30x30mm), by S.S., ring top suspension, reverse inscribed 'H.Oaten/For Attendance/1905'; Vincent Jockey Club, badge in voided **gold** (9ct, 3.1g, 30x30mm), no maker, pin-back, reverse inscribed 'H.W.Oaten/29.8.57'. *Fine; extremely fine.* (2)

\$200



2448

E.H., fob medal, handcrafted in **gold** (9ct, 4.2g, 23x23mm), by (beaver) (A.Beaver, Wellington), ring top suspension, reverse inscribed 'From/Te Awamutu Chums/1905'. *Fine.*

\$180

2444*

Waiwera, 1903, presentation miniature pipe (70x15mm), with attached cork and silver fob (22mm). *Very fine.*

\$250



lot 2449 part



2449*

L.P.A.A.S.C. (Lyttelton Pirates' Amateur Athletic and Swimming Club), 1905, fob medal, handcrafted in greenstone with 9ct gold (23mm), ring top suspension, inscribed 'G.Boyd'; (rowing), fob medal, hand engraved in gold (9ct, 9.6g, 35x30mm), by C.Mazey (Lyttelton), ring top suspension, reverse inscribed 'C.Boyd/Lyttelton/1912'; United Fire Brigades Association of N Z, Long Service Medal for five years service, in silver (39mm) by A.T. (Anton Teutenberg, Auckland), with (3) loose 2 Years Service bars, missing suspender and ribbon, reverse inscribed 'Fireman/C.D.Boyd/By/N.Z.Govt./9.8.20' (D&C.L3; O&D.115); C.P.F.B.A. (Canterbury Port Fire Brigade Association), badge in silver (32x28mm), no maker, pin missing from back; C.P.F.B.A., stock fob medal, uniface, struck in gold (9ct, 9.4g, 38x35mm), by Watts (Reuben Watts, Auckland), ring top suspension, reverse inscribed 'C.P.F.B.A./Lyttelton 1919/ Presented By/Capt.T.J.Watts/Won By/'; N.Z. Amalgamated Society Railway Servants, fob medal, uniface, struck in gold (9ct, 7.5g, 34x26mm), no maker, ring top suspension, reverse inscribed 'Presented/To/Mr.G.D.Boyd/Treasurer/Addington Branch/1919-21'. *Fine - very fine.* (6)

\$1,500



2450*

Millers Flat, hand engraved in gold (15ct, 9.7g, 28x28mm), no maker, ring top suspension, reverse inscribed 'Presented/To/Charles Topham Esq/By Members Of/Millers Flat Cricket Club/On/The Occasion/Of His/Marriage/1-3-05'. *Extremely fine.*

\$350



2451*
Christchurch, silver and enamel plaque (51mm), c1906, no maker, enamelled centre shield featuring Cathedral Square, pierced either side for attachment. *Very fine.*

\$200

Possibly from the Christchurch Exhibition of 1906-07.



2453*
Hand engraved fob medal, in gold (9ct, 4.7g, 24x24mm), no maker, ring top suspension, reverse inscribed '7/A Side/Tournament/S.H.Uttley/1907'; Wairarapa High School, badge in gold (9ct, 5.5g, 25x22mm), no maker, pin-back, reverse inscribed 'Foundation/President/Dr.G.H.Uttley/1926-27'; Rotary Club, Masterton N.Z., handcrafted in gold (9ct, 8.5g, 28mm), no maker, ring top suspension, reverse inscribed 'Past President/Dr.G.H.Uttley/1926-27'. *Very fine - extremely fine.* (3)

\$500



reduced

2452*
The "Pitt" Spirit Engine, c1907, plaque cast uniface in brass (127x75mm), no maker, holed at both sides for attachment, 'Manufactured For/Booth, MacDonald & Co Ltd/Christchurch, N.Z./Engine No 3331'. *Very fine.*

\$150



2454*
Promissory note, in the form of a single cufflink, in gold (18ct, 5.7g, top 25x10mm), by A.Kohn (Auckland), chain and bar back, inscribed on front 'Due 1907/Auckland/Months after date I promise to pay/£D.W.D./Payable at ---', reverse inscribed 'W.J.R.'. *Very fine.*

\$400



2455*
Silver presentation plaque, (55x24mm), no maker, suspension removed from reverse, inscribed 'Presented To/ Miss Johnston/By The/King St Cong. Choir/on the occasion of her/Marriage/20.11.07'; fob medal, hand engraved in **gold** (9ct, 5.3g, 32x30mm), uncertain maker, ring top suspension, reverse inscribed 'A/Parting/Gift/To/E.J.G.Johnston/from the/Phoenix Companys'/Employees/17.6.1916'. *Fine*. (2)
 \$350

Ernest James George Johnston, Book-Keeper, Dunedin. Possibly a departure fob for WWI.

2456
Badge steel dies, c1908, for Robert Cook, Solicitor, Wellington (38mm); E.W.Sofield, Manager, The Empire Hotel Ltd, Wellington (38x27mm); Wellington College, Wellington N.Z. (35mm). *Some rusting, very fine*. (3)
 \$150

2457
D.C.T. (Deputy Chief Templar), fob medal, hand engraved in **gold** (9ct, 6.4g, 30x27mm), no maker, ring top suspension, reverse inscribed 'D.Gain/D.C.T./Dunedin/1908'. *Very fine*.
 \$150



2458*
ACL (Auckland Cricket League), prize medal hand engraved in silver with central **gold** overlay on obverse (33x33mm), no maker, ring top suspension, reverse inscribed 'Won By/ Campbell/& Ehrenfried Co/H.Smith/1907/& 1908'. *Toned, very fine*.

\$150

The Campbell and Ehrenfried Company, Ltd., Brewers, Bottlers and Cordial Manufacturers and General Merchants, were situated in Lower Queen Street and Elliot Street, Auckland. This company was the largest brewing business in the North Island, if not in New Zealand and was formed by the amalgamation of the firms of Messrs Brown, Campbell and Co., and Messrs Ehrenfried Bros. They were incorporated in May, 1897.

In 1915 Campbell & Ehrenfried merged with the Great Northern Brewery, which holds the Lion beer brand and in 1923 they joined the New Zealand Brewery consortium to fight against the prohibitionist movement.

The company is now part of Lion Nathan Limited.



part (reduced)

2459*
Souvenir silver and enamel teaspoons: New Zealand, 'Victoria Wing' (120x25mm), by W.D., hallmark for Birmingham 1908; another, Dunedin (142x28mm), by L & S, hallmark for Birmingham 1909; another, New Zealand (110x20mm), by C.W., hallmark for Birmingham, 1912. *Toned, extremely fine, the first illustrated*. (3)

\$100



2460*

Token of Esteem, stock medal in gold (probably 9ct, 4.0g, 22mm), no maker, scroll and ring top suspension, reverse inscribed 'W. Grantham/From/Akld. Staff/P.L. Assurance Co/20-5-08'; another, hand engraved in gold (9ct, 6.7g, 33mm), no maker, ring top suspension, reverse inscribed 'Provident/Life Assurance Co/Managers Medal, 1919/Agent/W. Grantham/Christchurch'; G.P.C.C., hand engraved in gold (9ct, 7.6g, 28x28mm), by 'S', reverse inscribed 'G.P.C.C./Presented By/C. Buckett/To/Miss L. Grantham/Indiv./Champ.'; also, handcrafted badge in gold (9ct, 7.0g, 40x30mm), no maker, pin-back, inscribed on obverse 'Physical Culture/Won By/L. Grantham'. *Fine - extremely fine.* (4)

\$800



part

2461*

Blackball, fob medal, handcrafted in gold (15ct, 12.0g, 27mm), no maker, scroll and ring top suspension, reverse inscribed 'Presented To/Jas Neilson/By/The Sports Commte./of/State Collieries/Feb 1909'; also, half hunter pocket watch (53mm), in rolled gold, by Omega, top wind, white enamel dial with subsidiary seconds hand, black Roman numerals and gold hands, back dust cover inscribed 'To/Jas. Neilson/From/Staff/ Blackball Mine/Oct. 1930'. *Extremely fine; in working order, very fine, the first illustrated.* (2)

\$700



2462*

Cosmopolitan Club (Wanganui), Life Member's badge, uniface, struck in silver (23mm), by WN (W.F. Nettleship, Wanganui), scroll and ring top suspension, reverse inscribed 'W. George/1909'. *Very fine.*

\$80

Ex Colonial Coins & Medals (Brisbane) Auction, October 2007 (lot 811) The James Spencer (UK) Collection.



part

2463*

Family Group. King's College, Sports Handicap medal, struck in bronze (38mm), by A.T. (Anton Teutenberg, Auckland), ring top suspension, reverse inscribed 'Consolation Race/Won By/O.S.Ellis/1909' (D&C.cfM16) [illustrated]; King's College, badge in silver (35x27mm), by A.Tuetenberg, Auckland, lug back inscribed 'OSE' (D&C.M18) [illustrated]; Special Constabulary, Mounted - Auckland Nov.1913, struck in copper (30mm), by Y. Co (Young & Co, Auckland), reverse inscribed 'O.S.Ellis' (M.1913/6); NZ Returned Soldiers Association, badge in silver (43x25mm), no maker, missing pin, inscribed '12/2279' (O.11/38) [illustrated]; King's College, Sports Handicap medal, 1910, struck in bronze (38mm), by A.T., ring top suspension, reverse inscribed 'Three-Legged Race/Won By/S.Ellis' (D&C.cfM16); another, as last but Swimming Sports medal, reverse inscribed '1910/Won by/S.E.E.Ellis/Senior/Neat Header' (D&C.M16). *Fine - good very fine.* (6)

\$1,500

12/2779 2/Lieut Oliver Sydney Ellis, AIB, 5th Reinforcements.



2464*

Mt Ida Miners Association, fob medal, hand engraved in gold (15ct, 9.4g, 30x26mm), by D.B. (possibly D.Benjamin, Dunedin), ring top and pin-back, reverse inscribed 'Presented to/N.S.Read/By/Mt Ida Miners Assn/12-6-1909'. *Extremely fine.*

\$250



part

2465*

New Zealand Collie Club, struck in silver (38x35mm), by F&S, hallmark for Birmingham 1906, reverse inscribed 'To/Winner of Grand Star/1909/Won By/Alex Begg's/Campanella'; Caledonian Society of Otago, President's fob medal, struck in voided gold (9ct, 4.7g, 23mm), no maker, reverse inscribed 'Alex.Begg'/1916-1920'; New Zealand & South Seas Exhibition, 1925-26, in brass, silver and enamel (25x20mm) (M.1925-26/6), reverse inscribed 'Alexander Begg/Music Come.'; Dunedin Orphans Club, in silver (25x27mm), with two 10 Years bars, no maker, ribbon and pin-back bar suspension; Caledonian Games, stock medal hand engraved in silver (28mm), no maker, obverse inscribed 'B Grade/Champs/1949'. *All with ring top suspensions other than the fourth medal, fine - very fine, the first three illustrated.* (5)

\$750

Alexander Begg, part of the well known Begg family, retail pioneers and early settlers of Dunedin.



2466*
Auckland Competitions Society, c1910, uniface, struck in silver (27mm), by Y & Co (Young & Co, Auckland), fancy scroll and ring top suspension. *Toned, very fine.*

\$200



2467*
The Auckland Hospital Board, c1910, uniface, fob struck in gold (9ct, 5.9g, 23mm) and blue enamel, by Y & Co. (Young & Co), scroll and ring top suspension. *Fine.*

\$200

2468
Bar brooch, c1910, in gold (9ct, 6.9g, 60x10mm) with garnets set in a floral pattern, by S.R.Whale (Christchurch), pin-back. *Very fine.*

\$200



2469*
British Antarctic Expedition, Terra Nova R.V.S., c1910 heart pendant (28x28mm), handcrafted in coloured stone with inscribed gold fascia, ring top suspension. *Very fine and very rare.*

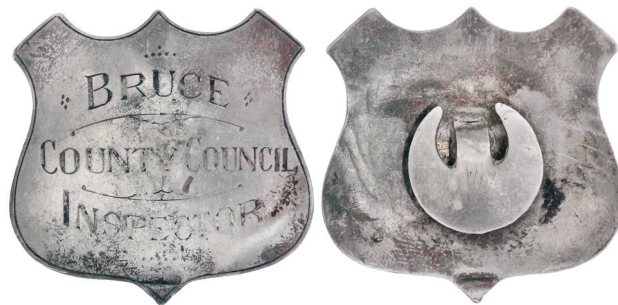
\$500

The following courtesy of Wikipedia, The Free Encyclopedia:

The Terra Nova Expedition, officially the British Antarctic Expedition, was an expedition to Antarctica which took place between 1910 and 1913. It was led by Robert Falcon Scott and had various scientific and geographical objectives. Scott wished to continue the scientific work that he had begun when leading the Discovery Expedition to the Antarctic in 1901-04. He also wanted to be the first to reach the geographic South Pole. He and four companions attained the pole on 17 January 1912, where they found that the Norwegian team led by Roald Amundsen had preceded them by 34 days. Scott's entire party died on the return journey from the pole; some of their bodies, journals, and photographs were found by a search party eight months later.

The expedition, named after its supply ship, was a private venture, financed by public contributions augmented by a government grant. It had further backing from the Admiralty, which released experienced seamen to the expedition, and from the Royal Geographical Society. The expedition's team of scientists carried out a comprehensive scientific programme, while other parties explored Victoria Land and the Western Mountains. An attempted landing and exploration of King Edward VII Land was unsuccessful. A journey to Cape Crozier in June and July 1911 was the first extended sledging journey in the depths of the Antarctic winter.

For many years after his death, Scott's status as tragic hero was unchallenged, and few questions were asked about the causes of the disaster which overcame his polar party. In the final quarter of the 20th century the expedition came under closer scrutiny, and more critical views were expressed about its organization and management. The degree of Scott's personal culpability, and more recently, the culpability of certain expedition members, remain controversial.



2470*
Bruce County Council, Inspector's badge, c1910, in silver (38x38mm), no maker, button back. *Toned, very fine.*

\$150



2471*
'K.T.C.', bar brooch, c1910, handcrafted in gold (18ct, 7.5g, 43x10mm) set with two emeralds, by S.R.Whale (Christchurch), pin-back. *Very fine.*

\$300

2472
L.G.U. Handicap, c1910, button or badge in bronze (21mm), by A.Kohn Ltd (Auckland), back lug and pin suspension. *Extremely fine.*

\$60

Together with red card box (33x33mm) printed in type 'I/was/made/in Auckland/by/Kohn's'.



2473*
NZ Coat of Arms - wishbone brooch, c1910, handcrafted in gold (9ct, 2.2g, 35x18mm), unidentified maker, pin-back. *Very fine.*

\$150



2474*
New Zealand - Kia-Ora, c1910, handcrafted fob medal in voided gold (9ct, 3.8g, 28mm), by (beaver) (A.Beaver, Dunedin), ring top suspension. *Extremely fine.* \$250



2475*
New Zealand souvenir pin, c1910, pin with amethyst stone (8x6mm) set in gold mount, with attached map in gold (9ct, 0.7g, 20x20mm), maker SF. *Very fine.* \$150

Possibly an Australian made piece given the five stars shown in the Southern Cross.



2476*
North Canterbury, c1910, badge struck (impressed) in silver or tin (38mm), (M.C.C.), no maker, pin-back. *Toned, very fine.* \$100

Possibly North Canterbury Motor Cycle Club.

2477
O.O.C., hand engraved in silver and gold (29x29mm), by Walsh & Co, ring top suspension, reverse inscribed 'Medal Competition/2nd Prize/Won by/G.Rayne'. *Fine.* \$80

2478
O.S.T. Wellington, fob medal, c1910, hand engraved in gold (9ct, 4.0g, 33x32mm), no maker, ring top suspension. *Very fine.* \$120

2479
Stock medal, c1910, in silver (22x22mm), by J.F.Ludwig (Napier), ring top suspension, unengraved. *Fine.* \$40



2480*
Taranaki County Council, Inspector's badge, c1910, hand engraved in silver (60x27mm), pin-back with remnants of safety chain at right. *Very fine.* \$150

2481
U.B.C. (United Boating Club), (Christchurch), handcrafted badge in voided silver (38x28mm), by N. & Son, pin-back. *Very fine.* \$40



2482*
University of Otago, School of Mines, Ulrich Memorial Medal, c1910, struck in bronze (51mm), by Allan Wyon, edge impressed 'C18' (S.514). *Extremely fine and very rare.* \$750

Awarded annually for Mineralogy and Petrography.



2483*

Auckland Competitions Society N.Z., struck in silver (45mm), by Vaughton, Birm., Birmingham hallmark, ring top suspension, reverse inscribed 'Architectural/Drawing/A.J.Brown/1911'. *Nearly extremely fine.*

\$350

Alfred Brown, born Auckland in 1893, educated at Auckland Grammar School then articulated to an architect 1908-12. Arriving in Sydney in 1913 he worked for Kent, Budden and Greenwell returning to Auckland at the outbreak of WWI where he enlisted in the New Zealand Expeditionary Force. Wounded in action in France during the war he was invalided to England where he remained until he returned to Sydney in 1930. In Sydney he served on many government planning boards and committees, was president of the Town Planning Association of NSW and became founding president of the Town and Country Planning Institute.

Ex Noble Numismatics Sale 62 (lot 484).

2484

Family Group. G.R.C. (Greymouth Rowing Club?), hand engraved in gold (9ct, 5.9g, 32x32mm), no maker, reverse inscribed 'G.R.C./Junior Pairs/W.Minehan/2nd/1911'; W.C.C.S. (West Coast Competitions Society), 1913, hand engraved in bronze (27x27mm) by J.Cairney (John Cairney, Greymouth), reverse inscribed 'W.C.C.S./1913/Sight Reading/W.Minehan/2nd'; D.C.S. (Dunedin Competition Society), hand engraved in gold (9ct, 7.4g, 28x28mm), no maker, reverse inscribed 'Gents/Championship/Elocution/W.S.Minehan/1936'; N.Z. Federation of Justices Associations, struck in gold (9ct?, 5.0g, 25mm) and blue enamel, no maker, reverse inscribed 'W.S.Minehan/2.8.1943'; dux, in silver (30mm) with gold centre, no maker, reverse inscribed 'T.Minehan/1948'; Hockey, ribbon with silver shield at top, 'T.Minehan' on first bar, then six further bars for 'Hockey', '1950', '1951', '1952', '1953' and '1954'. The first five medals with ring top suspensions, the last pin-back. *Very fine.* (6)

\$600



2485*

Kinloch, 1911, fob medal, handcrafted in gold (stamped 'solid gold', probably 18ct, 15.8g, 35x35mm), by Jones & Sons (Christchurch), reverse inscribed 'Junior Shield/H.Craw'. *Extremely fine, in a box of Jones & Sons.*

\$600

2486

Miscellaneous medals and badges, The Royal Life Saving Society, silver and bronze medals, awarded to G.H.Holder, 1911 (2); Gisborne Savage Club, membership badge in silver (Tiki); N.Z.A.A.A. (NZ Amateur Athletic Association) Otago Centre, in bronze (28mm); New Zealand/Ao-Tea-Roa, 1950, in voided bronze and enamel (25mm); Royal Agricultural Society of New Zealand, Champion medal in gilt (30mm), inscribed on reverse '1986/Santa/Gertrudis/Cow'; Golden Harvest 202F Convention, Riversdale, 1989; also, Victoria Racing Club, membership badge, 1919-20; Royal Agric. Soc. N.S.W., member's badge, 1931. *Fine - extremely fine.* (9)

\$150



2487*

T.U.S.E., Auckland, 1911, struck in silver (26mm), by R.P. (Alf M.Skeates design), hallmark for Birmingham 1911, fancy scroll and ring top suspension, reverse inscribed 'Mrs D.Gilbert/1st Prize/Animal Painting'. *Reverse edge bruise, otherwise very fine.*

\$150

2488

T.U.S.E., Auckland, 1911, struck in silver (26mm) (3), by R.P. (Alf M.Skeates design), hallmark for Birmingham 1911, fancy scroll and ring top suspension, first reverse inscribed 'W.Jameson/Throwing/Lassoo/1st Prize', second 'W.Jameson/1st Aid/1st Prize', third 'W.Jameson/Rough/Riding/1st Prize'; also, fob medal in silver (33x22mm) (hallmark 1911), ring top suspension, reverse inscribed '1st Prize/Shooting/Trophy/Won by/W.Jameson'. *All toned, nearly extremely fine.* (4)

\$200



2489*
T.U.S.E., 1911, struck in bronze (32x26mm), by Alf. M.Skeates (Auckland), ring top suspension, uninscribed. *Very fine.*

\$70



2490*
University of Otago, School of Mines, Ulrich Memorial Medal, struck in bronze (51mm), by A.Wyon (London), edge inscribed 'Montague Ongley 1911' (S.514). *Virtually as struck, uncirculated, in a Wyon fitted case of issue.*

\$700

Founded by subscribers to a fund for the purpose of providing a Memorial Prize in the School of Mines. It was awarded for the first time at the end of the session of 1902. In honour of Professor G.H.F.Ulrich, Professor of Mining and Director of the School of Mines from 1878 to 1900.

The prize is awarded annually by the University Council on the recommendation of the Pro-Vice-Chancellor (Sciences), to the best student studying mineralogy in Geology classes.

With research including the biographies of Ulrich and Montague.



2491*
Auckland Competitions Society NZ, (1912), struck in bronze (44mm) by Vaughton, Birmingham, reverse inscribed 'Myrtle Polton/Drawing/(Under 15)'. *Good extremely fine.*

\$150



2492*
Birthday presentation fob, handcrafted in gold (9ct, 5.1g, 25x20mm), no maker, ring top suspension, reverse inscribed 'To/Teddy Mandel/on his 10th birthday/6.7.12/From His/Loving Father'. *Very fine.*

\$150

2493
M.F.F.T., fob medal, hand engraved in voided gold (9ct, 6.2g, 38x26mm), by (G.)W.Taylor (Gore), ring top suspension, reverse inscribed 'P.J.Whelan/1912'. *Very fine.*

\$150

Possibly something related to Mataura. A Percival James Whelan was a Trooper in the Otago Mounted Rifles during WWI (9/533).

2494

Scouting, (Auckland) fob medal in silver and gold (35x27mm), by F.H.A.Ld, hallmark for Birmingham 1912, ring top suspension, reverse inscribed 'E.Haydon/1st Eden Troop/1st/Under 18'. *Extremely fine.*

\$80



2495

N.Z.A.S.A. (New Zealand Amateur Swimming Association), handcrafted in gold (9ct, 8.3g, 30x30mm), no maker, reverse inscribed 'Schoolboy/Swimming Champ/1912-13/L.Dowling/Wanganui/Centre/1st'; A.B.C., hand engraved in gold (9ct, 3.8g, 27x27mm), no maker, reverse inscribed 'Benefields/L.F.Dowling Bow/Pairs'; rowing medal, uniface, struck in gold (9ct, 2.2g, 27mm), unidentified maker, unawarded; W.R.C., hand engraved in silver (38x38mm), no maker, reverse inscribed '1913-14/G.Dawling [sic]/Cox'; W.T.C., hand engraved in silver (35x35mm), English maker and hallmark, reverse inscribed 'L.Dowling/100 Yds, Swim/1915'; another, 1916, hand engraved in silver (29x29mm), by JW & Co, reverse inscribed 'L.Dowling/Run Up/Snr. Chpn'; W.M.B. & S.C., stock medal in silver and gold (38x28mm), English maker and hallmark, reverse inscribed 'Aquaplaneing/1923'. *All with ring top suspensions, fine - very fine.* (7)

\$350



2498*

G.S.C. (Gladstone Sports Club), fob medal, hand engraved in gold (9ct, 7.4g, 40x28mm), no maker, ring top suspension, reverse inscribed 'Won by/W.A.Land/1st 100 Yds/1913'; M.F.B. (Masterton Fire Brigade), 1917, fob medal, handcrafted in gold (9ct, 5.5g, 38x28mm), unidentified maker, ring top suspension, reverse inscribed 'Won-by/For. W.Land/Agg/Shield'; R.N.R.(D) (Royal Naval Reserve [Dunedin]), fob medal, struck in silver and gold (35x27mm), no maker, ring top suspension, reverse inscribed 'Presented To/(blank)/1927'. *Very fine.* (3)

\$450

2496*

'Ake Ake', ornate decorative cloth fob piece, 1913, with fittings in gold (9ct, tot wt 10.3g), includes a fob medal (38x26mm), no maker, inscribed on reverse 'Oct. 5 1913'. *Very fine.*

\$200

2497

A.R.U.P.C., 1913, handcrafted in voided gold (9ct) and silver (28mm), no maker, ring top suspension. *Fine.*

\$100



2499*

University of Otago, School of Mines, Ulrich Memorial Medal, struck in bronze (51mm), by Allan Wyon (London), edge inscribed 'Awarded to Noel Carless.1914' (S.514). *Good extremely fine and very rare, in a fitted case of Wyon, London.*

\$750

Awarded annually for Mineralogy and Petrography.



part

2500*

Various medals and plaques, all awarded to the Blackie Family, between 1914 and 1953, fob medal, hand engraved in silver and gold (23x21mm), English maker and hallmark, ring top suspension, 'D.J.B.' on obverse, reverse inscribed 'O.F.A. (Otago Football Association)/Schools/1914'; another in silver and gold (25mm), English maker and hallmark, ring top suspension, obverse inscribed 'R.S.F./Team/1915', reverse inscribed 'Winners C.Banner/D.Blackie'; fob medal, hand engraved in gold (15ct, 8.5g, 25mm), by C.Baird (Dunedin), ring top and scroll suspension, reverse inscribed 'Presented/To/J.R.Blackie/President/West Harbour/Bowling Club/in appreciation of/valuable services/19.4.16' [illustrated]; fob medal, hand engraved in gold (9ct, 14.8g, 35x30mm), by G.T.W. (G.T.White, Christchurch & Wellington), ring top suspension, obverse inscribed 'J.R.B.', reverse 'Prestd. To/J.R.Blackie/By/The Spinners/25.9.20' [illustrated]; small silver plaque (36x25mm), no maker, pierced at sides for attaching, inscribed 'To/D.H.Blackie/from/Members of his/Staff/May 1945'; plaque, in gold (9ct, 17.7g, 112x38mm), no maker, pierced at each corner for attachment, inscribed 'A.J.C. (Avondale Jockey Club)/Coronation Handicap/1953/ Won by/Mrs D.H.Blackie's "Dixie" [illustrated]; 'T.C.C. Life Member' badge in silver (25mm), no maker, inscribed 'D.H.Blackie', pin-back. *Fine - very fine.* (7)

\$1,200

The 1953 Avondale Gold Cup was won by Dixie, weight 8st.9lb, Jockey M.A.Martinovich, time 2mins.30.4secs.



2501*
Waimate, fob medal, hand engraved in **gold** (9ct, 3.8g, 32x25mm), uncertain maker, ring top suspension, reverse inscribed 'Presented/To/Guard H.Harris/by/Waimate Friends/9-1-14'. *Very fine.*

\$300

On the occasion of his departure from Waihao Downs to Timaru.
 With research.



part

2502*
W.C.C.S. (West Coast Competitions Society), fob medal, machine tooled in **silver and gold** (38x28mm), English hallmark and maker, ring top suspension, reverse inscribed 'W.C.C.S./Greymouth/1914/T.Coburn/1st/Sight Reading/Ladies Under 21'; Trinity College of Music, London, request for attendance at exam, Greymouth, 3 December 1927 for Mildred Coburn; contract note for sale of 250 shares in Big River Mines Ltd, Greymouth, 14th January 1935 for £28/1/6, on account of Mrs Lilian Coburn. *Very fine, the first illustrated.* (3)

\$100



lot 2503

2503*
New Zealand Institute Foundrymen, Apprentice Casting Competition, c1915, cast brass plaque (160mm, 765g). *Very fine.*

\$200

2504
Sheep shearing, stock medal in **silver and gold** (28x28mm), reverse inscribed '2nd Prize/Sheep Shearing/Competition/Mossburn 1915'; another, as last (35x23mm), reverse inscribed '2nd Prize/Sheep Shearing/Competition/Mossburn/1916'. *Both English makers and hallmarks, ring top suspensions, very fine.* (2)

\$250



2505*
The United Commercial Travellers & Warehousemen Assn of N.Z., Past President/United President fob, struck in **gold** (9.9g, 34x28mm), no maker, ring top suspension, reverse inscribed 'S.A.Orchard 1915/Canterbury'. *Very fine.*

\$350

See also lot 2085 for Masonic jewels to the same recipient.



2506*
Window Dressing Compet., Timaru, 22-6-15, inscribed fob medal, handcrafted in **gold** (9ct, 6.1g, 35x25mm), unidentified maker, ring top suspension. *Extremely fine.*

\$200



2507*
L.D., tribute bar, hand engraved in **gold** (15ct, 3.8g, 42x9mm), by G. & T.Y. (G & T Young, Dunedin), inscribed '1906/1916/Dr.Church'. *Extremely fine.*

\$150



2508*
McRaes Prize, 1916, hand engraved in silver (37mm), by Grieve (H.J.(James) Grieve, Gisborne), ring top suspension, inscribed on reverse 'May Donovan'. *Pin removed from reverse, otherwise toned, very fine.*

\$80



2509*
Thames School of Mines, 1916, stock fob medal, hand engraved in silver (38mm), no maker (probably Reuben Watts, Auckland), ring top suspension, reverse inscribed 'Thames School of Mines.1916/Practical/and/Theoretical/Chemistry/Won By/S.L.Hedge/1916'. *Extremely fine.*

\$750

With ticket of W.Reuben Watts dated April 1917.



2510*

Dunedin Drainage & Sewerage Board, fob medal, handcrafted in gold (probably 9ct, 6.0g, 23mm) and enamel, no maker, ring top suspension, reverse inscribed 'Presented To/H.E.Moller Esq./Chairman/By Staff/Dunedin/Drainage & Sewerage Board/On His Retirement/30.5.17'. *Very fine.*

\$450

The following courtesy National Library of New Zealand - Papers Past, from the Evening Star, 16 August 1917:

"DRAINAGE BOARD

The ordinary meeting of the Drainage Board was held yesterday afternoon, and attended by Messrs J.J.Clark (chairman), Wilson, Small, Lunn, Kilpatrick, Sincock, Black, Taverner, and Scurr.

THE LATE CHAIRMAN.

The Chairman presented Mr H.E.Moller, the last chairman of the board as formerly constituted, with a vellum copy of the minutes of the final meeting of the late board. The resolution recorded in the board's minute conveyed to Mr Moller their appreciation of his splendid work on behalf of the ratepayers. The Chairman said they regretted the loss of Mr Moller as a member of the board. He had hoped personally that Mr Moller's health would have sufficiently recovered to have permitted him standing for a seat in the City Council. Mr Moller was a loyal and true friend, and a good public servant. He hoped, that the time was not far distant when he would take a foremost part in public affairs. Mr Moller in returning thanks, referred to the excellent staff that the Drainage Board had had. Taking Mr Foote, their secretary, for an example, he was an officer who stood on his own. He started in board's service as a boy, and eventually became their chief executive officer - a record hard to beat."

Mr Moller was later Mayor of West Harbour, retiring from that position in October 1927.

2511

Various silver medals and badges, Papakura Sports, 1917; L.T.C. for pianoforte (2) 1938 and 1939; New Plymouth Girls High School; Northland Competitions Society (2); Wellington Orphans Club (1975); Taihape School, 1984. *Fine - very fine.* (8)

\$200



2512*

Presentation locket, in gold (15ct, tot wt 5.5g, 25x18mm) set with central diamond on front, English maker and hallmark, fancy scroll and ring top suspension, back inscribed 'To/ A.Biggs/From Riccarton/Friends/27.7.18'. *Fine.*

\$200



2513*
N.Z. Bakers & Pastrycooks, fob medal, handcrafted in gold (9ct, 7.0g, 40x31mm), no maker, reverse inscribed '1918-19 Exhibition'; another as last, handcrafted in gold (9ct, 7.0g, 40x31mm), no maker, reverse inscribed '1918-19 Exhibition'; another, as last, handcrafted in gold (9ct, 7.6g, 40x33mm), unidentified maker, reverse inscribed '1919-20 Exhibition/P.Dunn'. *Extremely fine, all with ring top suspensions.* (3)

\$700

2514
Gore Competitions, fob medal, hand engraved in gold (9ct, 3.1g, 30x22mm), by D D Ltd (probably David Dawson, Dunedin), ring top suspension, reverse inscribed 'Gore/Competitions/3Fsts Elocution/12 to 16 Years/Oct.1919'. *Very fine.*

\$200

2515
C.B.F.C., hand engraved in gold (15ct, 10.0g, 29x29mm), no maker, ring top suspension, reverse inscribed 'V.Newman/C.B.F.C./1919'. *Extremely fine.*

\$250



2516*
Smart Rd Freezing Works, (New Plymouth), fob medal, hand engraved in gold (15ct, 9.6g, 29x27mm), unidentified maker, ring top suspension, reverse inscribed 'Presented/to/James Milne/by Staff and Employees/Smart Rd. Freezing Works/Dec 1919'. *Extremely fine.*

\$320



2517*
Auckland Workingmens Club, c1920s, Life Member's badge, struck in gold (9ct, 7.3g, 28x25mm), no maker, button-back, inscribed on front 'D.Barclay'. *Very fine.*

\$200



2518*
City of Dunedin, Inc 1865, badge, c1920s, struck in gilt and enamel (23mm), no maker, pin-back. *Very fine.*

\$50

2519
C.U.F.C., c1920, hand engraved in silver and gold (37x35mm), by B.Bros, ring top suspension, reverse inscribed 'C.U.F.C./Won by/Mang'au/B.Schrouder'. *Stained, otherwise very fine.*

\$100

Mang'au said to be Mangatokerau, 10km west of Tolaga Bay, East Cape.

2520
Dunedin Orphans Club, c1920, badge struck in silver (25x25mm), no maker, with ribbon, bar and pin-back suspension; **S.P.C.**, badge struck in silver (29mm), no maker, ring top suspension, reverse inscribed 'W.Anderson/Mile/1938'; **Australia & New Zealand Police Games Federation**, Wanganui, 1988, struck in gilt (51mm), no maker, ring top and black & white neck ribbon suspension, unawarded; also, **The Royal Horticultural Society**, Banksian medal struck in bronze (38mm), no maker, reverse inscribed 'Awarded By/Rustington/Allotment H.Ass./To/Mr J.Gray/1949'. *Very fine.* (4)

\$100



2521*
Kiwi brooch, c1920, struck in gold (9ct, 3.4g, 24x15mm), no maker (W.R.Bock, Wellington), pin-back. *Extremely fine.*
 \$150

Ex Bock Estate.



2522*
Newmarket R.S.C. (Returned Services' Club), Life Member's badge, c1920s, hand engraved in gold (9ct, 3.2g, 30x25mm), pin-back, reverse inscribed 'B.S.Hunter'. *Very fine.*
 \$200



2524*
Peter Pan Club (Auckland), c1920s, pin in copper with silver star in centre (23mm), by Kohn's, Auckland. *Very fine.*
 \$100

Operating in the 1920s. Members were the children who made up the readership of the children's page of the Auckland Star. The 'Club Mother' was 'Wendy' and the 'Club Captain' was Peter Pan, based on the characters in J.M.Barrie's book.



2523*
N Z State Forest Service, c1920s, badge in voided silver (42mm), by C.M.Bay (Wellington), pin-back. *Very fine and rare.*
 \$500

Attributed to Harold James Screen (WWI Regd No. 10057, Nurseryman, Tapanui).



2525*
Temperance, stock fob medal, c1920s, uniface in silver with gold (35x30mm), by A.Kohn (Auckland), ring top suspension, reverse inscribed 'Challenge Award/To/Nola Neilson/for/120 Temperance Pledges'. *Good very fine.*
 \$150

2526
G.S.C., 1921, handcrafted in silver (35x35mm), no maker, reverse inscribed 'Judges Special/Dick Pollock'; Waihopai, hand engraved in silver, English hallmark, reverse inscribed 'Waihopai/1928/Richard Pollock/- Years/Attendance' (partial attempted removal of inscription). *Both with ring top suspensions, very fine.* (2)
 \$100

2527
M.C.S. (Masterton Competition Society), fob medal, hand engraved in gold (9ct, 4.7g, 35x32mm), unidentified maker, ring top suspension, reverse inscribed 'M.C.S./Elocutionary/Championship/ I.F.Halligan/1921'. *Extremely fine.*
 \$150

2528

N.I.B.Y.M.B.C.U., Wanganui, 1921, fob medal, hand engraved in silver (32x28mm); (Kings College Auckland) badge struck in silver (33x28mm), missing ring from top; another, fob medal, struck in bronze (26mm), by W&H (Walker & Hall), reverse inscribed '1939/High Jump/Under 16 Hdcp/1st'; WWI, 28th Reinforcements sweetheart's badge, struck in silver (32x28mm), missing pin from reverse; Wgtm C.C. (Wellington Cycling Club), fob medal, uniface, struck in copper (32x30mm), obverse inscribed '1970/Wgt. C.C./Sen.T.T./50 Mile/3rd'; Citizen Band Radio/Wanganui Group/WG Country, badge in gilt and enamel (32mm); Vauxhall/Bedford Wellington Club badge in gilt and enamel (30x25mm). *Except where indicated, ring top or pin-back suspensions, fine - very fine.* (7)

\$100

2529

Seddon Memorial Technical School, Auckland, medal struck in silver (27mm), no maker, ring top suspension, reverse inscribed 'Awarded/To/L.W.Kay/For Swimming/A Distance Of/3 Miles/1921'; school badge for same school, in bronze (voided oval 40x26mm), pierced hole top and bottom for sewing to hat; St Peter's School Cambridge N.Z., undated, uniface medal struck in copper (49.5mm); silvered convex pendant featuring the reverse of a New Zealand shilling on one side and the ship reverse of an English halfpenny on the other; Electrolux, made in New Zealand, coloured white metal trade name plate (61mm) with securing holes at sides; A New Dawn - A New Day, New Zealand 2000, oval disc in bronze (42mm x 62mm). *The third medal uncirculated, the rest fine - very fine.* (6)

\$100

Ex Noble Numismatics Sale 100 (lot 1083).



2530*

Presentation Tiki, handcrafted in gold (probably 9ct, 12.2g, 30x20mm) with emerald eyes, no maker, pierced at top, reverse inscribed 'To Isabel/From Norman/1922'. *Very fine.*

\$300



2531*

W.S.D.J.C. (presumed to be Waimate Sheep Dog Junior Competition), May 1922, stock medal in gold (9ct, 7.9g, 24mm), by W.Good (Gisborne), scroll and ring top suspension, reverse inscribed 'Won By/H.Boyce's/"Nap"/Class 3/28 Points'. *Toned, extremely fine.*

\$200

2532

F.U.P.M., fob medal hand engraved, in voided gold (9ct, 5.7g, 29mm), no maker, ring top suspension, reverse inscribed '1923/Hastings/A.Farmery'. *Good fine.*

\$100

2533

B.A.C., hand engraved in gold (9ct, 7.4g, 36x28mm), no maker, ring top suspension, reverse inscribed '1st Prize/won by/H.Hand/27.10.24'. *Very fine.*

\$150



2534*

Canterbury Justices of the Peace Assn. N.Z. (Inco), fob medal, struck uniface in gold (9ct, 6.9g, 30x23mm) and blue enamel, by M&K (Mayer & Kean, Wellington), scroll and ring top suspension, reverse inscribed 'H. Macintosh/April 1924'; Christchurch City Council, Motor Driver, fob medal, handcrafted in gold (probably 9ct, 9.1g, 26mm) and enamel, no maker, ring top suspension, reverse inscribed 'H. Macintosh/Motor & Traffic/Inspector'; N.Z. Association of Army Navy and Auxiliary Forces, badge in copper (31x28mm), no maker, pin-back, reverse inscribed 'H. Mcintosh' (O.11/98). *Very fine; fine; very fine.* (3)

\$800



2535*

Memorial fob medal, hand engraved in gold (9ct, 4.9g, 35x32mm), by G. & T. Y. Ltd (G. & T. Young, Dunedin), ring top suspension, reverse inscribed 'In Loving Memory/of/My Dear Father/Fleming Laurenson/Died at Oamaru/30-1-24/Aged 63 Years'. *Very fine.*

\$300



lot 2536 part

2536*

Radio Society, Ch.Ch., 1925, souvenir decorated cloth fob drop, consisting of gold (9ct) fernleaf at top, gold (9ct) inscribed panel, copperplate initials 'E.N.W.' in gold (9ct), fob with a gold (9ct) kiwi on greenstone attached, suspended with rolled gold chain and fob clip at top; Hawaii, coat of arms, fob medal in gold (14ct, 6.4g, 30x28mm) and enamel, ring top suspension, reverse inscribed 'Edw.N.Willis/From/6 Buc/Sept 1925'; also, N.Z.R.L. kiwi coat pin in silver (20x18mm). *Very fine.* (3)

\$600



2537*

B.C.D.T. (B. Collie Dog Trials), uniface stock medal, struck in silver (38mm), by Mayer & Kean (Wellington), obverse inscribed 'B.C.D.T./Pull and Yard/2nd/1926'. *Toned, extremely fine.*

\$150



2538*

'Bonds of Friendship', fob medal, hand inscribed in gold (9ct, 5.0g, 24mm), by G.J. & S/A.B. Dn., scroll and ring top suspension, obverse inscribed 'G.W.Bagrië/New Zealand/June/1926'. *Extremely fine.*

\$200



2539*

Appreciation fob, stock medal in gold (9ct, 11.0g, 35x30mm), uncertain maker, ring top suspension, reverse inscribed 'Pres. By/Roy Davis/Storekeeper/To W.Baker Employee/In appreciation For an/Honest Deed/28.8.27'. *Very fine.*

\$200

Said to be from the Okoroire Hotel (between Tirau and Matamata).



2540*
D.Y.C. (Dominion Yeast Company), Bread Exhibition, For Excellence In N.Z, Breadmaking, struck in gold (9ct, 13.4g, 29mm), no maker, fancy scroll and ring top suspension, reverse inscribed 'J.Somerton/Class 5/1927'. Extremely fine.

\$500

2541
Identity tag, on a smoothed out obverse of an Australian Canberra Florin, 1927, pierced at top with ring attached, reverse inscribed 'Janice Carnie/Mackley St./Wairoa'. Very fine.

\$50



2542*
Window dressing, W.M.A., hand engraved in gold (9ct, 5.2g, 35x27mm), no maker, reverse inscribed 'Hawera/Window Display/N.Z.Goods/G.Horsburgh/(Jnr)/1927'; another, hand engraved in gold (9ct, 5.2g, 33x28mm), reverse inscribed 'Window Dressing Compt/Hawera/1928/Empire Goods/Cut Rate Grocery/Mr G.R.Horsburgh/Jnr.'; another, hand engraved in gold (9ct, 5.1g, 35x28mm), no maker, reverse inscribed 'Window Dressing/Competition/Hawera/1929/Empire Goods/G.R.Horsburgh'. All with ring top suspensions, extremely fine, an unusual trio. (3)

\$500



2543*
Auckland Competitions Society Inc., fob medal, struck in silver (35x29mm), by A.Kohn (Auckland), fancy scroll and ring top suspension, reverse inscribed 'Jack Ferris/Recitation 9/10/1927'; another, 1929, uniface struck in silver (35x33mm), by A.Kohn Ltd, scroll top suspension, reverse inscribed '1st/Test Recital/Under 16/Jack Ferris'; another, 1929, uniface struck in copper (38x32mm), by A.Kohn Ltd, scroll top suspension, reverse inscribed '2nd/Test Recital/12-14/Jack Ferris'; stock fob medal in silver and gold (37x25mm), English maker and hallmark, scroll and ring top suspension, obverse 'J.F.', reverse inscribed 'Elocution/1st Class Hon/1929'. Extremely fine. (4)

\$650



2547*
Corporation of Invercargill, c1930s, Meter Reader's badge, number 496, in gilt and enamel (32mm), by Moller Dn, pin-back. *Extremely fine.*

\$80



2544*
New Zealand, badge in voided silver and enamel (48mm), by Spencer, London, hallmark for Birmingham 1929, ring top suspension, possibly part of a lodge jewel. *Extremely fine and impressive.*

\$350

2545
Alexander Gillies Medal, c1930s, in bronze (57mm), undated and unawarded, no maker (probably Mayer & Kean, Wellington) (S.-). *Surface marks, very fine and rare.*

\$350

Ex Mayer & Toye (Wellington) Archive, private purchase February 2005.



2548*
Kia Ora, NZ, collector's souvenir teaspoon, c1930s, in gilt brass and enamel (125x25mm), by C.J.N. & Co, features tattooed Maori portrait in bowl. *Good very fine with enamelling intact.*

\$100



2546*
Big Brother Bill's Family, 4YA (Dunedin), c1930s, badge in brass and enamel (30mm), no maker, pin-back. *Very fine.*

\$150

Big Brother Bill (Pastor William David More) presented a childrens session on Dunedin radio 4YA in the 1930s. Initially broadcasts were made on Thursday and Friday evenings but eventually became a nightly programme, seven days a week. Big Brother Bill was assisted by Anita Oliver (Aunt Anita). In a 1970 interview an elderly Pastor More recalls organising yearly picnics for his audience to the bottom of the Kilmog Hill, near Dunedin. One year 6,000 children attended.



2549*
New Zealand Institute of Surveyors, Fulton Bequest Annual Prize medal, c1930s, struck in gilt (51mm), by M&K Ltd (Mayer & Kean), unawarded (S.501). *Uncirculated.* \$500

Ex Mayer & Toye (Wellington) Archive, private purchase February 2005.



2550*
N.Z. Town Planning Conference & Exhibition, c1930s, award medal struck in silver or silvered (36mm), uncertain maker, possibly Bock, unawarded. *Extremely fine.* \$200



2551*
Wellington Competitions Society, c1930s, badge in voided silver (35x35mm), by Mayer & Kean (Wellington), pin-back. *Toned, extremely fine.* \$80

2552
Fob medals, 1899-1930, a variety handcrafted or engraved in gold (9ct, tot wt 83.5g), highland, sporting and attendance, probably all New Zealand but none have been attributed, all inscribed except for two. *Fine - extremely fine, some with ring top, others pin-back suspensions.* (15) \$1,800



2553*
Window dressing, fob medal, handcrafted in gold (9ct, 5.1g, 36x32mm), no maker, ring top suspension, reverse inscribed '1st/Window/Dressing/Masterton/7.6.30'. *Extremely fine.* \$200



2554*
The Bledisloe Medal for Oratory, Founded 1931, struck in gilt bronze (41mm), by M&K (Mayer & Kean, Wellington) (S.504). *Small carbon patch on obverse, otherwise good extremely fine and extremely rare, probably a prototype.* \$800

A gold medal is awarded triennially for the best oration on a New Zealand subject (a great man or woman, Pakeha or Maori, in New Zealand history; or a great event in New Zealand history). Competed for by representatives of various universities.

Ex Mayer & Toye (Wellington) Archive, private purchase November 1998.



2555*
Horowhenua Boys' & Girls' Clubs, badge in silver (30mm) and two shades of blue enamel, by M&K (Mayer & Kean, Wellington), pin-back suspension, '1st' inscribed on obverse, 'J.H. 1933' on reverse; another, 'K.W. 1935' on reverse [illustrated]. *Fine, with chipped enamel; Very fine.* (2)

\$100



2556*
South Auckland Brass Band Contest, 1933, uniface, struck in silver (37x28mm), by W&H (Walker & Hall); **S.A.B.U. Contest**, Tauranga, 1937, uniface, struck in silver (26mm), no maker; **Dilworth Ulster Institute**, uniface, struck in silver (35x25mm), no maker, reverse inscribed '220 Yds/H.A.Hefferen/A.M.C.'. *All with ring top suspensions, very fine - good very fine.* (3)

\$250



2557*
Antarctica, enamelled silver badge by BM Co, Birmingham 1932, scratched on back '1934/Molly/Spokes/IVA/May 1934'. *Very fine.*

\$150

Ex Noble Numismatics Sale 83 (lot 975).

2558
N.C. (North Canterbury) Road Champion, 1934, hand engraved in gold (9ct, 5.3g, 27x28mm), uncertain maker, 'H.G.W.' inscribed on obverse; also, **T.H.S.**, 1924, hand engraved in silver and gold (27x28mm), English maker and hallmark, reverse inscribed '220 Yds/Champ/R.White'. *Both with ring top suspensions, very fine.* (2)

\$200



2559*
The Gas Institute of New Zealand Incorporated, membership fob medal, 1934-35, uniface, handcrafted in silver gilt (28mm), no maker, ring top suspension; another, **President's badge**, 1938-39, handcrafted in gold (9ct, 4.7g, 28mm) and enamel, no maker, pin-back, reverse inscribed 'G.H.E.Collins/Takapuna'. *Very fine.* (2)

\$300

Together with a black and white cloth patch (50x50mm) of the Institute, dated 1924.

2560
Invoices, from William R.Bock, General Engraver & Die Sinker, Wellington (Established 1880), 1918-1935, made out to New Zealand Institute and Royal Society of NZ, for engraving 'Hector Medal' and other properties. *Fine.* (4)

\$100



2564

Auckland Show, 1936, stock medal struck in gold (9ct, 4.4g, 28x21mm), by H&Co, hallmark for Birmingham 1930, ring top suspension, reverse inscribed 'Weight/Estimating/Championship/Won by/D.Ryburn'. *Very fine*.

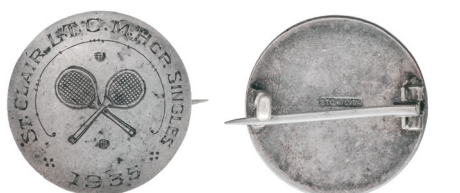
\$200



2565

Fob medals, 1896-1937, all handcrafted or hand engraved in silver (tot wt 84.8g), three with gold centre shields, mostly for sports and schools, some inscribed, three unawarded, probably all New Zealand but none attributed. *Fine - very fine, all but one with ring top suspensions*. (11)

\$200



2561*

Masonic, Wellington Chapter No.62, halfpenny size token, struck in bronze (26mm); Balclutha School of Nursing, South Otago N.Z., badge struck in silver (30x25mm), no maker, pin-back; St. Clair (Dunedin) L.T.C. (Lawn Tennis Club), M.Hcp. Singles, 1935, badge hand engraved in silver (25mm), no maker, pin-back; W.B.H.S. (Waitaki Boys High School), (Oamaru), 1942 Prefect badge, hand engraved in silver (32x32mm), no maker, pin back. *Very fine - extremely fine*. (4)

\$200

2566*

W.C.S. (Wellington Competitions Society), 1937, Mayer & Kean Medal, struck in gold (9ct, 9.6g, 30mm), by M&K (Mayer & Kean, Wellington), ring top suspension, reverse inscribed 'Mayer & Kean/Medal/Elocution Aggre./Nathan Beatus'; another, as last but 1938, struck in gold (9ct, 9.6g, 30mm), by M&K, ring top suspension, reverse inscribed 'Mayer & Kean Medal/Gentlemen's/Elocution Agg./Won by/Mr Nat.Beatus'. *Extremely fine, with a Mayer & Kean card box*. (2)

\$450



2562*

Cable Makers Asscn., uniface, struck in gold (9ct, 7.2g, 26mm), by M&K (Mayer & Kean, Wellington), ring top suspension, reverse inscribed 'Practical/Electrical Wiremen's/Exam/Sept.1935/Awarded To/Vernon John Kingsland'. *Toned, very fine*.

\$200



2563

M.L.T.A. (M(anawatu?) Lawn Tennis Association), 1935, stock badge in silver and gold (45x45mm), no maker, pin-back, reverse inscribed 'Combined/Junior Stars'. *Very fine*.

\$100

2567*

Auckland Harbour Board, membership badge, struck in voided gold (9ct, 7.9g, 26mm) and blue enamel, by M&K (Mayer & Kean, Wellington), ring top suspension, reverse inscribed 'F.H.Gifford Esq. 1938'. *Very fine*.

\$250

2568

(Boxing), Auckland Provincial Championship, fob medal, struck in copper (38x30mm), by A.Kohn Ltd (Adolph Kohn, Auckland), ring top suspension, reverse inscribed 'Welterweight/B.Lyall/1938'; British Empire Games, 1950, struck in bronze (51mm), by M&K Ltd (Mayer & Kean, Wellington), reverse inscribed 'G.R.Lyall' (M&P.1950/7); identity tag (possibly military) in aluminium (78x26mm) with green coating (mostly worn off), pierced at right for suspension, impressed 'G.R.Lyall/X16MT/241614'; also, fob medal, hand engraved in silver (30x21mm), no maker, inscribed 'F.B.S./1910'. *Very fine.* (4)

\$250

2569

Badges and medals, 1911-1940s, including gold (M.A.C.) and silver (2), others in base metals (10), noted Canterbury Aero Club and Palmerston North Technical School. *Very good - very fine.* (13)

\$160



2570*

Auckland Competitions Society N.Z., c1940s, struck in copper (45mm), by Vaughton, Birm. *Extremely fine.*

\$200



part

2571*

Borough of Otahuhu, (Auckland), c1940s, fob medals, uniface, struck in silver and blue enamel (37x23mm), no maker, pierced at top for suspension. *Toned, extremely fine, one illustrated.* (4)

\$150

2572

Die trials, uniface, struck in copper, c1940s, Devonport (9), Christchurch (4), Petone, Bluff, New Plymouth and Rotorua. *Extremely fine.* (17)

\$200



2573*

'Kia-Ora' N.Z., c1940s, kiwi fob medal (ID tag), uniface, struck in silver (27mm), no maker, ring top suspension, reverse inscribed 'F.M. McInness/C.O.E.'. *Very fine.*

\$50



reduced

2574*

J.R. McKenzie Ltd., c1940s, Christmas Greetings wall plaque or plate, in silvered base metal (103mm). *Fine.*

\$150

Sir John Robert McKenzie was one of seven children of Scottish immigrants. John was born in Melbourne, Australia in 1876. His father was a customs officer. After leaving school at 13 and working odd jobs for some years, he enlisted in the Victoria Bushmen's Regiment when the Boer War broke out in 1899. He served nearly two years in South Africa and was invalided home in 1901.

In 1905, he set up a 'fancy goods' shop with his sister Ella in Collingwood Melbourne. The business was so successful that a second store was opened within a year. The Melbourne shops were sold to a competitor, and the pair established businesses in Tasmania and Sydney. After a holiday to New Zealand in 1909, John transferred his business there the following year. The first McKenzies store was opened in Dunedin and the business grew rapidly.

By 1980, when the business was taken over, there were 75 stores and 1800 staff; McKenzies was a household name throughout New Zealand.

In 1949 John McKenzie was recognised for his contribution to public welfare when he was made a Knight of the Order of the British Empire. Sir John died in 1955.



2575*
NZ badge, c1940s, sailing ship, handcrafted in silver (38mm), pin-back. *Very fine.*

\$100



2576*
N.Z. Chinese Assn, c1940s, badge, struck in copper (31mm), by T.M.Dick, Wellington, pin-back. *Extremely fine.*

\$50



2577
N.Z. Chinese Assn, c1940s, badge, struck in brass (31mm), no maker, pin-back. *Extremely fine.*

\$50

2578
(NZ) Coat of Arms, c1940s, copper plaque (51mm), pierced in three places for attachment, possibly off a P.O.S.B. money box. *Fine.*

\$100

2580*
Royal Society of New Zealand, Secondary Schools Centennial Medal (1940), struck in bronze (63mm), no maker (Mayer & Kean) (S.-). *Extremely fine and extremely rare.*

\$1,000

Ex Mayer & Toye (Wellington) Archive, private purchase November 1998.



2579*
Badge, silver and enamel (35x26mm), pin-back, reverse inscribed '3471/P.W.Patterson/1940'. *Extremely fine.*

\$150

2581
New Zealand/USA, souvenir pendant love token (30mm), probably WWII, made from a concave New Zealand silver halfcrown coin dated 1935, sweated together with a USA silver half dollar c1942, holed at top for suspension. *Toned, fine.*

\$40



2582*
Greenslade Ferns, 1942-43, handcrafted fernleaf badge in gold (9ct, 3.0g, 40x15mm), no maker, pin-back. *Very fine.*

\$100

2583

Franklin Caledonian Society, fob medal handcrafted in gold (9ct, tot wt 8.2g, 26mm), no maker, ring top with two gold date bars, 1941-1944 and 1956-57, pin-back, reverse inscribed 'A.C.R.Sim'; NZ Federation of Justices Associations, fob medal in gold (9ct, 5.9g, 26mm) and blue enamel, by Y. & Co. (Young & Co, Auckland), ring top suspension, reverse inscribed 'A.C.R.Sim'; N.Z. Racing Conference (T), badge in gilt and enamel (25mm), by Bock & Son, Wellington, pin-back. *Very fine, the last with chipped enamel.* (3)

\$350

2584

T.S.S.C. (said to be Taieri Sports & Swimming Club), uniface, struck in silver (35x35mm), no maker, ring top suspension, reverse inscribed 'T.S.S.C./J.Pavitt/1944'; Masonic, 50 years service badge, in gilt and black enamel (38x33mm), no maker, pin-back, inscribed on reverse, 'Bro T.S.Walker/Initiated/03/12/1946'; Paremata Boating Club, badge in gilt and enamel (30mm), by Walker & Hall, pin-back; elongated coin, 'The Interislander - Aratika' on a New Zealand five cents. *Good very fine.* (4)

\$60



2585*

A.H.B.S.C. (Auckland Harbour Board Social Club), Life Member's badge in silver and blue enamel (28x26mm), no maker, ring top suspension, reverse inscribed 'R.E.Brown/1947'. *Very fine.*

\$100

2586

N.B.D.H.S. (New Brighton District High School) Band, stock medal, uniface, struck in silver (26mm), no maker, ring top suspension, reverse inscribed '1948/B.Berryman'; Royal Life Saving Society, Established 1891, struck in bronze (32mm), no maker, ring top suspension, reverse inscribed 'B.Berryman/13-12-50'. *Fine; very fine.* (2)

\$70



part

2587*

N.Z.F.P. & D.A. (New Zealand Federated Painters and Decorators Association), handcrafted in gold (9ct, 6.7g, 43x23mm), no maker, ring top suspension, reverse inscribed 'E.F.Bennett/President/Conference/Wellington/1948' [illustrated]; Wellington Orphans' Club, medal in silver and blue enamel, by M&T Ltd (Mayer & Toye, Wellington), ribbon and bar with pin-back, bar with naming 'Ted Bennett'; also, London Clarion Cycling Club, stock medal in silver (40mmx26mm), English maker and hallmark, ring top suspension, reverse inscribed '1938/12 Hour/213 5/8 M./2nd Hcap/London Clarion'. *Very fine.* (3)

\$350

2588

Group of seven badges, c1940s-1950s, Auckland Highland Games (35x33mm); Auckland Londoners Club (35x30mm) by Young & Co; New Zealand Bowlers Tour to the British Isles 1951 (30x30mm), English maker; Ex Servicemens Club Onehunga (28x23mm); Tamaki Maori Womens Welfare League (28mm); The Tin Hat Club, Wellington N.Z. (17mm), NZ Onward (26mm) (sweethearts badge), all in base metal and enamelled, except the last (gilt and gold), pin-backs, except the first (ring top suspension); also, New Zealand/Aotearoa, kiwi medallion, c2000, in silver (40mm). *Fine - nearly uncirculated.* (8)

\$150

2589

Morere, c1950s, tickets for Government Baths for sixpence (3); Suburban Buses, tickets for 5d and 1/4; name card for Mr S.G.Holland, Prime Minister of New Zealand; Canterbury Jubilee, 1900, DIC, Cashel Street, name card; also, Jean Batten, 1990, Auckland Airport medal with descriptive card. *Fine - very fine.* (8)

\$50

2590

Newmarket R.S.C. (Returned Services Club), c1950s, Life Member's badge in gold (9ct, 3.5g, 30x25mm), no maker, pin-back, reverse inscribed 'J.C.Stirling'. *Very fine.*

\$150

2591

New Zealand Amateur Swimming Association, c1950s, in brass and enamel (32mm), no maker, ring top suspension; N.Z.P.C.A. (NZ Pony Clubs Association) Wanganui Pony Club, badge in brass and enamel (30x23mm), no maker, pin-back; Seddon Memorial Technical College, badge in brass and enamel (33mm), by E.S.A. London, pin-back suspension (pin missing); also, Friends of Canterbury Cathedral (UK), badge in bronze and enamel (32mm), by Vaughton, Birmingham, pin-back suspension. *Very fine.* (4)

\$40



2592*

The New Zealand Master Builders' Federation Incorporated, c1950s, award medals for Trade Certificate Examination (Carpentry & Joinery) struck in copper and another in silver (51mm), by M&K Ld (Mayer & Kean, Wellington) with both sets of maker's initials, designer 'GW', unawarded. *Extremely fine.* (2)

\$600



2593*

The New Zealand Master Builders' Federation Incorporated, c1950s, award medal for Trade Certificate Examination (Carpentry & Joinery) struck in silver (51mm), by M&K Ld (Mayer & Kean, Wellington) with both sets of maker's initials, designer 'GW', reverse inscribed 'Roderick W./McCallum/1970'. *Slight edge bruising on reverse, otherwise extremely fine.*

\$500



2594*

The New Zealand Master Builders' Federation Incorporated, c1950s, award medal for Trade Certificate Examination (Carpentry & Joinery) struck in bronze (51mm), by M&K Ld (Mayer & Kean, Wellington) with both sets of maker's initials, designer 'GW', reverse inscribed 'GIBSON Alister R'. *Extremely fine.*

\$300

Ex Noble Numismatics Sale 107 (lot 724).

2595

Wairarapa Womens Weekly, c1950s, Reporter's badge, hand inscribed in silver (42mm), no maker, pin-back. *Toned, very fine.*

\$120

2596

A family group of awards, 1916-1952: The Royal Life Saving Society, Established 1891, struck in bronze (32mm), no maker, reverse inscribed 'A.S.Brewster/December 1916'; another but Award of Merit, struck in silver (28mm), English maker and hallmark, reverse inscribed 'A.S.Brewster.1917'; National Daffodil Society of N.Z., award medals to A.S.Brewster, bronze (4) and silver (2), all (32mm), no makers - includes, Wanganui, 1928 (B), Palmerston North, 1950 (S) (2) and (B), Gisborne, 1951 (B) and Lower Hutt, 1952 (B); also, New Zealand Friesian Association, uniface, struck in silver (26mm), no maker, reverse inscribed 'Marton A. & P. Show/1936/Most Points/H.D.Brewster'; another, as last, reverse inscribed 'Feilding A. & P. Show/1936/Most Points/H.D.Brewster'. *All with ring top suspensions, very fine - extremely fine.* (10)

\$600

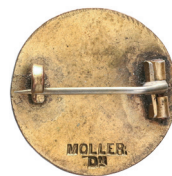


part

2597*

New Zealand Physiotherapist, badge struck in silver and blue enamel (36x24mm), no maker, pin-back, reverse inscribed 'E.P.Eccles/1044-1952'; Chartered Society of Physiotherapy, badge in copper and enamel (45x26mm), Birmingham maker, pin broken off back, numbered P 20502; also, Royal Life Saving Society, Established 1891, struck in bronze (32mm), no maker, ring top suspension, reverse inscribed 'E.Eccles/26.3.47'. *Fine - very fine, the first illustrated.* (3)

\$100



part

2598*

Badges, a small group from 1912-1953, Kiwi Joggers, struck in voided silver (24mm), no maker; N.Z. Sports Protection League, 1912, struck in silver (17mm), by W.R.Bock (Wellington); Otago & Southland Red Cross, 1916 in brass and enamel (22mm), by Moller Dn. (Dunedin); New Zealand Red Cross Society/1939 V.A.D. 1945/For Service, in brass and enamel (30x29mm), by Mayer & Kean Ld, Wellington, numbered 1658; Pacific Ranger Gathering, 1953, in white metal and enamel (25mm), by English maker; White Star Tourist Services Ltd, N.Z. in brass and enamel (22mm), by H.Slingsby Ltd, Nuneaton, mostly with pin-back suspensions; also, Caledonian Society of Invercargill, Coronation Festival 1937 medallion, in brass (31.5mm) (M.1937/2). *Very fine - extremely fine, all scarce, the first three illustrated.* (7)

\$350

2599

Mangapehi Club Inc, Life Member's badge hand engraved in silver and gold (35x32mm), no maker, pin-back, obverse inscribed 'Presented to R.W.Naylor/June/1953'. *Toned, very fine.*

\$50

2600

Various medals and souvenirs, Royal Tour 1953, badges (3) and a key tag; Patron's badge, New Zealand Sheep Dog Trials Assn badge; Timaru Boys High School, swimming medal in bronze (25mm); Royal Life Saving Society, school medals (4), NZBBA, service badge; AHS shooting medal; NZ Deerstalkers Assn badge; CHA 7-A Side hockey medal; Milling Contest, 1950; also, plastic toy money c1966, 10 cents (1/-) (4), 20 cents (2/-) (5). *Fine - extremely fine.* (24)

\$150

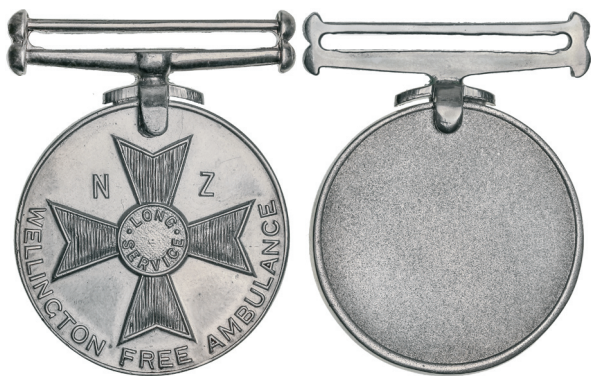


part

2604*

N.Z. Lands and Survey, Ranger's badge in copper (33x48mm), No.0391 [illustrated], with accompanying Department of Lands and Survey warrant card for Ernest Joseph Booth of Tauranga, dated 2nd December 1957; Ranger/Scenic Reserve badge, in chrome and red enamel (25x20mm), by Mayer & Toye Ltd, Wellington [illustrated]; Royal Life Saving Society (school's type), in bronze (32mm), reverse inscribed 'E.Booth/27-3-42'; N.R.A. of N.S.W., badges in tin (37mm) (2), one for 'E.J.Booth/New Zealand' the other for 'Ern Booth/Kati Kati N.Z.'. *Good - very fine.* (5)

\$200



part

2601*

Wellington Free Ambulance Long Service Medals, (1956), in silver, bronze and silvered, unawarded, without ribbons (O&D.114). *Uncirculated, the first illustrated.* (3)

\$250

Ex Mayer & Toye (Wellington) Archive, private purchase February 2005.

2602*

Wellington Free Ambulance Long Service Medals (1956), in silver, unawarded (O&D.114) (2); Service Medal of the Order of St John (O&D.113), in silver (cased), unawarded. *Uncirculated, all without ribbons.* (3)

\$250

Ex Mayer & Toye (Wellington) Archive, private purchase September 2005.

2603

Wellington Free Ambulance Long Service Medal, (1956), in silver, unawarded (O&D.114). *Uncirculated, without ribbon.*

\$80

Ex Mayer & Toye (Wellington) Archive, private purchase September 2001.



part

2605*

N.Z. Gov. Council of the Cat Fancy, Champion medal struck in brass (27mm, 2 types), inscribed on reverse, 'Nilgris Buru/Kaihau/1958'; another, 'Merrick Apollo/1958'; another, 'Paquita/1959'; another, 'Merrick/Viking/1961'; another, 'Ransein/Blue/Angel'; another, 'Ransein/Blue/Andrae'; another, 'Ransein/Blue/Amelia'. *All with ring top suspensions, fine - very fine, one of each type illustrated.* (7)

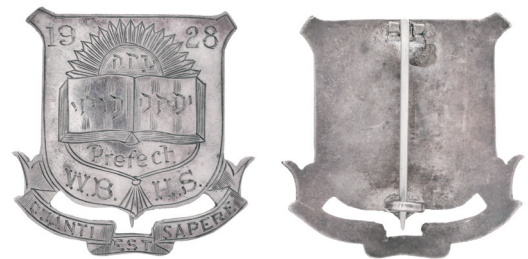
\$200



2606*

The New Zealand Master Builders' Federation Incorporated, Past President's badge in gold (9ct, 10.2g, 28x32mm) and enamel, by M&K Ld (Mayer & Kean, Wellington), pin-back (pin missing), reverse inscribed 'A.F. Ross/1958'. *Extremely fine.*

\$300



part

2607*

Marlborough Walk, 1st Year, badge, silvered (31mm) by Mayer & Toye, Wgtn.; another, not 1st year, silver or silvered (31mm), no maker; Marlborough Highland Dancing Committee, struck in silver or silvered (32x30mm), no maker; M.C.S., Centennial of Marlborough, 1859-1959, struck in silver or silvered (33x33mm), no maker. *All with pin-backs, very fine - extremely fine, the last two illustrated.* (4)

\$150



part

2608*

An extensive collection, mostly commemorative tin badges, c1900-1960s, includes school jubilees, township jubilees, religious themes, proposed Royal Visit (1949), Royal Visit (1953-54), other Royal events, 1940 Centennial, other metal badges and medalets included; also, prize cards from A&P shows. *Fair - uncirculated, some annotated in 2x2 holders, many rare, a unique grouping nigh on impossible to duplicate today.* (100s)

\$2,750

Ex W.H.Lampard Collection, private purchase in 2011.

2609

Medals and badges, a group from c1910-1960s, in silver and base metal, includes agricultural, cattlebreeders, Barnados, Buffalo Lodge, horse racing, lifesaving, Masonic, Oddfellows, orphans and skating. *Fine - extremely fine.* (46)

\$500



2610

Various medals and badges, 1914-c1960s, includes Dunedin Competitions Society, Wellington Girls College, Marlborough Walk, Boys' & Girls' Clubs, NZ Marching Association, Ranfurly Shield, British Empire Games, Waitaki Girls High School, All Blacks, Dannevirke Jubilee, Royal School of Church Music, mostly in base metal, (4) in silver. *Fine - extremely fine.* (35)

\$350

2611

Various silver badges, c1920s-1960s, ANZAC Club, New Zealand Returned Services Association (M); Masonic, Lodge Taimau 331; M.S.C. (Masterton Savage Club); Wellington Savage Club. *Very fine.* (5)

\$200



2612

Various badges, c1930s-c1960s, noted New Zealand Amateur Swimming Association Southland, South Canterbury Piping and Dancing Association, Red Cross, schools, Dahlia Society of New Zealand, Tonka Drivers Badge, all in base metal, most with enamel. *Fine - extremely fine.* (35)

\$300

2613

Various medals and badges, 1940s-1960s, mostly base metals but (4) in silver, group includes Auckland Normal Intermediate School (Prefect), Empire Ex-Service Assn, National Daffodil Society of NZ (2), NZ Centennial Sports (Otago), Onehunga Bowling Club, Royal Life Saving Society, NZ State Dental Nurse, Timaru Centenary, others, schools and awards (5). *Very fine - extremely fine.* (15)

\$200

2616*

New Zealand Apprenticeship Committees, Taranaki, c1960s, struck in bronze (57mm), no maker, 'Taranaki' inscribed on reverse with a further six lines erased by stippling. *Extremely fine and rare.*

\$300

2617

Stylised kiwi, c1960s, uniface, struck in silvered base metal (77mm), no maker, reverse inscribed 'Mrs. Ernest Conrad'. *Very fine.*

\$50

2614

Badges and medals, an interesting accumulation, c1940s-1960s, mostly in base metal and enamel, some tin, includes: aero club, athletics, bowling, centennials, dancing, fire brigade, lodge, marching, orphans, racing, rugby, schools and skiing. *Fine - extremely fine.* (60)

\$150



2615

Badges and medals, a group c1950s-1960s, includes highland dancing, highland games, Post Office and schools, all in base metals, some enamelled. *Fine - extremely fine.* (21)

\$120

2618*

Wanganui Painting Trade Class, c1960s, stock medal, struck uniface in copper (32mm), by B & S (Bock & Son, Wellington), reverse inscribed 'Wanganui Painting Trade Class/2nd/Year's Course/Awarded by Employers/3rd Prize Won By/James Dean'. *Extremely fine.*

\$150



reduced

2619*
Fiji, Fiji Taxi Union, c1960s, handcrafted metal car badge, possibly aluminium (130x103mm). *Some corrosion, otherwise fine and rare.*

\$350



2620*
Pacific Films, struck in gold (9ct, 7.5g, 25mm), by M&K Ld (Mayer & Kean, Wellington), fancy scroll and ring top suspension, reverse inscribed 'In Appreciation Of/Services To/Pacific Films/1960'. *Very fine.*

\$220

The Pacific Film Unit was established in Wellington, in 1948. At this time most films produced in New Zealand were documentaries made by the Government's National Film Unit. In 1950 the company changed its name to Pacific Film Productions Ltd.

The first feature film was Broken Barrier (1952). The company had an office in Courtenay Place, Wellington in 1960, and was the New Zealand representative for British Movietone News and Fox Australian Movietone News. Associated companies were Pacific Television Ltd. and Pacific Films Ltd.

Pacific Films produced scores of road safety dramas, rugby tests, documentaries and commercials.



2621*

Levin & Otaki-Waikanae Weekly News, 1962 Award of Merit, struck in gold (9ct, tot wt 18.1g), by M&K Ld (Mayer & Kean, Wellington), red ribbon and bar with pin-back, reverse inscribed 'Mrs.J.Royal/Otaki'. *Extremely fine.*

\$300

2622

Medals and badges, including life saving, school and Buffalo Lodge medals and badges, 1912-1963, includes Royal Life Saving Society (10), Ashburton High School, St Marys (Stratford), Buffalo Lodge jewels (3), Masonic, Dunedin Opera Company and a silver Scottish prize fob for 'Whist Competition', mostly base metals but includes (3) in silver. *Fine - very fine.* (18)

\$200

2623

Group of fob medals and badges, 1921-1965, includes gold (1), silver and gold (5), silver (7) and base metals (5), awarded for cage birds, cricket, croquet, cycling, life saving, lodge, schools, 7 A side football, swimming and tennis; also, Dahlia Society of New Zealand Inc, uniface medal, struck in bronze (39mm). *Fine - very fine.* (19)

\$300

2624

Various medals, including Victory Medal, named 9/746 Gnr.F.V.Puttick N.Z.E.F.; ANZAC Commemorative Medallion (1967) (O&D.50) fudged naming (probably a sample); another, as last, unnamed; New Zealand General Service Medal EIIR, error in engraved naming; swimming medal in silver (30mm), inscribed 'J.T.Clark/One District/Swimming/Championships/1945 Italy/200 Metres/Free Style/800'; cagebird medal, in silver (32mm), uninscribed; The Photographic Society of New Zealand, in gilt (41mm); Tauranga Harbour Bridge, in copper (M&P.1988/1); also, a case for WWII NZ Memorial Cross. *Very fine - extremely fine.* (9)

\$200

Ex Mayer & Toye (Wellington) Archive, private purchase February 2005.

2625

Medals and badges, 1884-1967, an interesting selection, many in silver, Akarana Swimming Club, athletics, bowling clubs, Buffalo Lodge, Christchurch Highlanders, Dahlia Society of NZ, dancing, Hawkes Bay A&P Society, life saving, Manawatu A&P Society, marching, Masonic, pipe bands, Royal Agricultural Society, Red Cross, RSA and schools. *Fine - extremely fine.* (25)

\$200



2626*

The New Zealand Institute of County Engineers Inc., struck in silver (49x5mm), no maker, reverse inscribed 'L.S./Donnelley/Secretary/Treasurer/1947-66'; another, struck in silver (49x3.5mm), by M&T Ld (Mayer & Toye, Wellington), reverse inscribed 'L.S.Donnelley/President/1969-70'. *Toned, uncirculated and rare.* (2)

\$700

L.S.Donnelley was Engineer for the Hutt City Council in 1978.

2627

NZ Racing Conference, Trainer admission passes, 1968-1969 in enamel and gilt, 1969-1970 in enamel and chrome, 1970-1971 in enamel and gilt, all with impressed number on reverse; commemorative fob in silver wash (mostly missing) copper, obverse, Kiwi left within fern leaf wreath, shield below inscribed, 'C.H.B/V/N.S.W/1968'; Nelson College medal in silver (25mm), with suspension loop, obverse, college arms, reverse, open wreath and inscription, 'Fell/Squad/Leader/1951'; M.V.Rangitoto, NZS Co, enamel and chrome medal (26.5mm) with suspension ring; Otago Centennial, 1948, in gilt (31mm); HMS Ophir medal 1901, in copper (27mm) pierced for suspension with original ribbon (M.1901/8); New Zealand silver florin recovered from earthquake, severely damaged with reverse inscribed, 'Napier 'Quake/Feb 3rd 1931'. *Except for the last, very fine - extremely fine.* (9)

\$100

Ex Noble Numismatics Sale 103, 13-15 August 2013 (lot 1004).

2628

Medals and badges, a group from c1900-1970s, mostly in base metals, includes R.A.O.B., The Navy League-Otago Branch in silver, Red Cross, Provincial Museum-Marlborough, New Plymouth Boy's High School, Nth.Taranaki Rod & Gun Club, N.Z.A.A.A. (NZ Amateur Athletics Association)-Otago Centre, Hutt Valley Harriers, Wellington College, Opunake Marching Association and (15) racing club membership badges. *Very good - extremely fine.* (35)

\$200

- 2629
Miscellaneous badges and medals, 1903-1970s, an accumulation of mostly sporting, school, royalty, dancing and commemorative pieces in silver and base metals, noted (M&P.1974/13 copper) and (M&P.1975/3). *Fine - extremely fine.* (30)
\$250
- 2630
Medals and badges, an interesting accumulation from 1906-1970s, in mostly base metal but a few silver and one gold piece noted, includes: boxing, bowling clubs, Caledonian Society, car rally, commemoratives, coronation, Druids, exhibitions, golf clubs, ice skating, I.O.O.F., jubilees, life saving, machine tokens, NZR tool checks, racing clubs, Red Cross, religious, RSA, Savage Clubs, schools, senior citizens and swimming. *Fine - extremely fine.* (105)
\$600
- 2631
Medals and badges, a diverse selection, mostly badges from 1920s-1970s, includes aviation, bands, boating, bowling, coronation, fishing, games, golf, kiwis, military, Navy League, numismatic society, nursing, Red Cross, schools, SPCA, tennis, tikis, mostly in gilt and enamel or base metals. *Fine - extremely fine.* (181)
\$250
- 2632
Medals and badges, a small group from 1923-1970s, mostly base metal, includes bowling, Buffalo Lodge, Caledonian Society, Druids, political and swimming. *Fine - extremely fine, some scarce.* (25)
\$200
- 2633
Various medals and badges, from 1926-1970s, in silver (2) and base metals (14), noted: F.W.Pink, advertising lace hook, New Zealand Centenary 1940 badge and NZAAA Amateur Championship medal, 1957. *Fine - extremely fine, some scarce.* (16)
\$300
- 2634
Medals and badges, c1930s-c1970s, mostly base metal with enamel, seven in silver noted, group includes Barnardos, bowling, cage bird, croquet, golf, horse racing, Orphans club, patriotic, pipe band, Savage club, schools, YMCA and 1940 Centennial. *Fine - extremely fine.* (39)
\$400
- 2635
A group of medals and badges, 1932-c1970s, includes bowling clubs, budgerigar, cadets, choir, friesian association, horticultural society, Marlborough Walk, marching, racing and trotting clubs, roller skating, savage club, schools, senior citizens, Teal Airways and 1940 Centennial. *Fine - very fine, mostly in base metals.* (lot)
\$250
- 2636
Badges, c1940s-1970s, mostly bowling clubs in gilt and enamel, a few in silver, also noted dancing, gun club, highland, fire brigade 2 Years Service bars (3), NZ Centenary, Old Colonists, Orphans club, Plunket Society, racing club, Red Cross, Savage club, schools, surf club, Teal Airways, Traffic Officer (WCC) and trotting club. *Fine - extremely fine, many scarce.* (66)
\$450
- 2637
Badges, c1940s-c1970s, mostly bowling clubs in base metals and enamel, also noted agricultural clubs, budgerigar society, canary club, fire brigade, hockey, marching, netball, pipe band and senior citizens. *Very fine - extremely fine.* (56)
\$300
- 2638
A group of badges and medals, c1940s-1970s, includes athletics, bowling clubs, highland, photographic, religious and schools, mostly base metal, one noted by Mayer & Kean (Wellington). *Mostly very fine.* (20)
\$150
- 2639
Badges, various issues, c1950s-1970s, mostly in gilt and enamel but some silver, noted: Bowling Clubs (16), Jersey Cattle Club, NZ Coat of Arms, Old Colonists Association, Whangarei Amateur Operatic & Dramatic Society Inc. *All with pin-backs, mostly very fine.* (35)
\$200
- 2640
Badges, medals and checks, a small group including boxing, bowling, Federation of Justices, life saving, miniature golf club, RSA, schools. *Fine - extremely fine.* (9)
\$150
- 2641
A group of badges, c1950s-1970s, includes, badminton, bowling clubs, centenaries, choir, football club, life saving, orphans and savage, RSA, schools, swordfish, trotting club - most are bowling clubs in brass and enamel. *Very fine - extremely fine.* (53)
\$150
- 2642
A selection of badges and medals, by Bock, Wellington, c1970s, includes amongst others, bowling clubs, Building Institute, church, pipe bands, printing, schools and shearing. *Extremely fine.* (24)
\$300
Ex Bock Estate.
- 2643
City of Lower Hutt, Civic Award, c1970s, medal struck in silver (42mm), no maker (Mayer & Toye), unawarded; also, silver badge, Hutt City coat-of-arms, struck in silver and enamel (32x32mm), by M&T Ltd. *Uncirculated.* (2)
\$300
Ex Mayer & Toye (Wellington) Archive, private purchase February 2005.



2644*
City of Lower Hutt, Civic Award, c1970s, medal struck in silver (42mm), no maker (Mayer & Toye), unawarded. *Extremely fine.*

\$250

Ex Mayer & Toye (Wellington) Archive, private purchase February 2005.



2647*
New Zealand Governor General's Medal, c1970s, struck in bronze (57mm), no maker (Mayer & Toye), unawarded. *Small edge nick, good extremely fine.*

\$300

Ex Mayer & Toye (Wellington) Archive, private purchase November 1998.



2645*
The New Zealand Antique Dealers' Association Incorporated, Member's badge, c1970s, struck in gilt (28x25mm), by Bock (Wellington), pin-back. *Extremely fine.*

\$50

Ex Bock Estate.

2646
New Zealand Governor General's Medal, c1970s, struck in bronze (57mm), no maker (Mayer & Toye), unawarded. *Edge nicks, otherwise good extremely fine.*

\$300

Ex Mayer & Toye (Wellington) Archive, private purchase February 2005.



2648*
The N:Z:Inst: of Architects Incorporated, Founded 1905, The N:Z:I:A Medal, c1970s, struck in bronze (39mm), no maker, reverse uninscribed. *Struck with antique bronze finish, nearly uncirculated.*

\$200



2649*

Wellington Free Ambulance, c1970s, badge in gilt and enamel (60x44mm), by Bock (Wellington), lug-back. *Extremely fine.*

\$70

Ex Bock Estate.

2650

Various, medals and badges, 1904-1970, B & D.A.S.D.L. (snooker & billiards), hand engraved in silver (40x30mm) with gold shield on obverse, by E.S., hallmark for Chester 1904, ring top suspension, reverse inscribed '1904-5/Won by/W.J.Hill'; N.R.A./Shooting, hand engraved in silver (27x27mm), no maker, ring top suspension, reverse inscribed 'Won by/Col.Sgt.Hally/1913'; O.B.A.F.C., hand engraved in silver (30mm) with gold centre on obverse, no maker, ring top suspension, reverse inscribed 'Presented/To/J.J.Fleming/For Merit/1920'; Sumner Boxing Assn, 1922, stock medal in silver (30x25mm), English make; Gravity Contest 1935, stock medal in silver (30x29mm) with gold shield on obverse, by B.C.M./W.H.H., hallmark for Birmingham 1932, ring top suspension, reverse inscribed '1st Quartette/A.Coe'; Dunedin Competitions Society, struck in silver (30x22mm), no maker, ring top suspension, reverse inscribed 'J.Fleming/Double/Quartette' [illustrated]; Rothmans Rugby League Final, struck in bronze (32mm), no maker, ring top suspension, reverse inscribed 'Under 19/Southern Winners/1970/P.Sturgeon'; rifle shooting, struck in bronze (35x30mm), by Mayer & Kean (Wellington), ribbon and bar with pin-back suspension, reverse inscribed '1960'; N.Z. Returned Services Association, District Bowling Champion, badge in silver and blue enamel (25mm), by Mayer & Kean Ld, Wellington; N.Z.B.A. (2), badges in silver, 'South Island' (23mm) and 'Referee' (25x18mm), the first by W&H (Walker & Hall); B.O.P. Croquet Assn/Championship Singles/1969, badge in silver (32x32mm), no maker; St Mary's Stratford, badge in silver and blue enamel (40mm), no maker; Q.B.B.T. Southland, 1962, badge in silver (25mm), no maker; N.Z.C.C. A 1970, badge in silver (22mm), by Bock (Bock & Son, Wellington); Waitahuna Golf Club, Life Member's badge, in silver (30x22mm), no maker; Wellington Caledonian Society, badge in silver (21x21mm), no maker; G.S.B. Life Honorary Member's badge, in silver (25x20mm), no maker; P.N.H.S. (Palmerston North High School), badge in silver (28x19mm), by J.B.G., all with pin-back suspensions. *Fine - extremely fine.* (19)

\$550



2651*

The N:Z:Inst: of Architects Incorporated, Founded 1905, The N:Z:I:A Medal, struck in silver (39mm), no maker, reverse inscribed 'E.M.Wainscott/1970'; another, struck in bronze, reverse inscribed 'E.M.Wainscott/City Architect & Design Staff/A.C.C. Workshops/1969'; another, struck with antique bronze finish, unawarded. *Virtually uncirculated.* (3)

\$600

Together with a Dick & Watt Ltd, Petone cellophane wrapper which contained the silver medal, plus a hand penned note.

Ewen Martin Wainscott (1920-1987) joined the Auckland City Council in 1947, shortly after qualifying, and was Auckland Chief City Architect for 37 years from 1967 until 1985. Few Aucklanders have heard of him and yet his legacy is an enduring one: rigorous, elegant modernist buildings, often for the most prosaic of purposes. Wainscott drew his design from US tank factories, which he visited earlier in the 1960s.