

PAPUA NEW GUINEA



895*
German New Guinea, gold twenty mark 1895A. *Has been mounted and repaired otherwise good extremely fine and very rare.*

\$15,000



896*
German New Guinea, five mark, 1894 A. *Nearly extremely fine/good very fine.*

\$1,800



897*
German New Guinea, two mark, 1894 A. *Good very fine.*

\$600



898*
German New Guinea, one mark, 1894 A. *Good very fine.*

\$300



899*
German New Guinea, one mark, 1894A. *Toned, good very fine.*

\$250



900*
German New Guinea, half mark, 1894 A. *Extremely fine with steel blue patination.*

\$600

901
German New Guinea, ten pfennig, 1894A. *Dark brown tone, nearly uncirculated.*

\$250



902*
German New Guinea, ten pfennig, 1894A (KM.3). *Very fine.*

\$90

903
Papua New Guinea, gold one hundred kina, 1975 (2), 1977, 1978 (KM.9, 12, 13). *Uncirculated in packs of issue. (4)*

\$1,400

904
Papua New Guinea, proof gold one hundred kina, 1976, First anniversary issue, (KM.10). *FDC in wallet of issue.*

\$350

905
Papua New Guinea, proof gold one hundred kina, 1976 FM(P) (KM.10). *FDC.*

\$220

906
Papua New Guinea, badges, Boroko R.S.Club 1965, D.C.A/ R.L.F.C Port Moresby, life member; New Hebrides British ex-Servicemen's Association; New Caledonia, Noumea badge in the shape of the flag, all metal badges; Government of N.S.W invitation on gold printed card to meet the governor of New Caledonia for a luncheon at Parliament House 3rd August 1914. *Extremely fine - uncirculated. (5)*

\$80

NEW ZEALAND



907*
George V, Waitangi crown, 1935. *Lightly toned, mirrored fields, uncirculated.*

\$4,500



908*
George V, halfcrown, 1933. *Toned, uncirculated.*

\$300

909
George V, halfcrown 1933. *Good extremely fine.*

\$70

910
George V, halfcrowns, 1933, 1934, 1935. *Uneven toning, nearly uncirculated; extremely fine; nearly extremely fine. (3)*

\$120



911*
George V, halfcrown 1935. *Hairline die break across bust, original mint bloom, uncirculated and rare thus.*

\$250

912
George V - George VI, halfcrowns, 1934 (2), 1937. *Extremely fine. (3)*

\$150

913
George V - George VI, florins, 1933, 1935, 1937, 1940, 1943. *All toned, good very fine - uncirculated. (5)*

\$250



914*
George V, florin, 1934. *Toned, uncirculated.*

\$200

915
George V, florins, 1934, 1936 (2). *Good extremely fine; good very fine; nearly extremely fine, the last two scarce. (3)*

\$250



916*
George V, florin, 1936. *Tiny edge nick at 7 o'clock on reverse, toned with subdued mint bloom, uncirculated/nearly uncirculated and rare, the key date.*

\$1,000



917*
George V, shilling, 1934. *Toned, nearly uncirculated.*

\$100



918*
George V, shilling, 1935. *Full mint bloom, lightly toned, choice uncirculated.*

\$150



919*
George V, shilling, 1935. *Even grey toning, uncirculated.*

\$300



920*
George V, shilling, 1935. *Toned, nearly uncirculated.*
 \$200

921
George V - George VI, shillings, 1933, 1941, 1943, 1944, 1945. *All toned, extremely fine - nearly uncirculated.* (5)
 \$150

922
George V - Elizabeth II, shilling set, 1933-1965, including 1942 'broken back', 1958 'broken back', 1962 'no horizon', 1962 'half horizon', and extras, 1940, 1943, 1944, 1945, 1952; ten cents, 1968, 1971, 1980 (2), 1982, 1985, 1987, 1988 (2). *Almost all silver coins have been dipped, one of the 1944 coins has verdigris on obverse, otherwise very fine - uncirculated.* (45)
 \$600

923
George V - George VI, sixpences, 1933, 1943, 1946, 1947. *All with nearly full mint bloom, nearly uncirculated - uncirculated.* (4)
 \$220

924
George V - George VI, sixpences, 1933, 1934, 1935, 1936, 1937, 1939, 1940, 1941. *Toned, extremely fine - nearly uncirculated, the last scarce.* (8)
 \$180



925*
George V, threepence, 1935. *Toned with full original mint bloom, choice uncirculated and rare in this condition, one of the finest known.*
 \$2,000

Sold with H.G. Williams envelope "M.S. 9d".



926*
George V, threepence, 1935. *Dark toning, virtually uncirculated and rare, the key circulating coin of the New Zealand series.*
 \$1,500

927
George V - George VI, threepences, 1933, 1934, 1936, 1937, 1939, 1940, 1942, 1943, 1944, 1945, 1946. *Most with light toning, nearly uncirculated - uncirculated.* (11)
 \$200

928
George V - George VI, threepences, 1936, 1937, 1939, 1940, 1942, 1943, 1944, 1946. *Nearly uncirculated - uncirculated.* (8)
 \$200

929
George VI, halfcrowns, 1937, Centennial 1940, 1941, 1943. *The first three heavily toned, extremely fine - nearly uncirculated.* (4)
 \$100



930*
George VI, halfcrown, 1942. *Toned, uncirculated.*
 \$200

931
George VI, halfcrown, 1942; shilling 1940. *Nearly uncirculated; uncirculated.* (2)
 \$200

932
George VI, halfcrowns, 1944, 1946, 1947, 1948, 1949, 1950, 1951. *All toned, extremely fine - nearly uncirculated, the first scarce.* (7)
 \$300



933*
George VI, halfcrown, 1945. *Toned with underlying brilliance, uncirculated.*
 \$250



934*
George VI, halfcrown, 1945. *Nearly uncirculated.*
 \$120



935*
George VI, halfcrown, 1946. *Nearly uncirculated.*

\$120



940*
George VI, florin, 1941. *Frosty mint bloom, uncirculated.*

\$150



936*
George VI, halfcrown, 1949. *Uncirculated.*

\$250



941*
George VI, florin, 1942. *Uneven toning with underlying frosty brilliance, uncirculated.*

\$200



937*
George VI, florin, 1940. *Full original frosty mint bloom on the reverse, uncirculated/choice uncirculated and rare in this condition, one of the finest known.*

\$1,000



942*
George VI, florin, 1942. *Nearly uncirculated.*

\$100



938*
George VI, florin, 1940. *Toned reverse, extremely fine/nearly uncirculated and rare.*

\$300

943
George VI, florins, 1944, 1945, 1946, 1947. *Good very fine - nearly uncirculated, the first scarce. (4)*

\$250

944
George VI - Elizabeth II, florin, 1944, 1947, 1948, 1949, 1950, 1951, 1953, 1961, 1962, 1963. *All with heavy toning, the first scarce with underlying mint bloom, extremely fine - nearly uncirculated. (10)*

\$150



939*
George VI, florin, 1941. *Lightly toned with underlying brilliance, uncirculated.*

\$150



945*
George VI, florin, 1945. *Uneven toning with underlying frosty brilliance, uncirculated.*

\$200

946
George VI, florin, 1946. *Uneven toning with underlying frosty brilliance, uncirculated.*

\$150

947

George VI, shilling, 1937. *Mottled toning, uncirculated.*
\$140



948

George VI, shilling, 1940. *Toned, nearly uncirculated.*
\$80



953*

George VI, shilling, 1951. *Two light carbon spots on reverse, otherwise full mint bloom, uncirculated.*
\$120

954

George VI - Elizabeth II, shillings, 1947, 1948, 1950, 1952, 1953, 1955. *All with toning, nearly uncirculated, the last scarce. (6)*
\$150



949*

George VI, shillings, 1940 and 1946, sixpence, 1940. *Obverses slightly toned, uncirculated/choice uncirculated and scarce thus. (3)*
\$350

955*

George VI, sixpence, 1942. *Minor carbon spots on reverse, otherwise frosty mint bloom, uncirculated, a key date.*
\$350



956

George VI, sixpences, 1943, 1944, 1945, 1946, 1947, 1950, 1951, 1952. *The silver toned, extremely fine - uncirculated. (8)*
\$100

957

George VI, sixpence, 1948. *Small carbon spot on wing, otherwise uncirculated.*
\$80

950*

George VI, shilling, 1942. *Light even toning, frosty mint bloom, uncirculated.*
\$400



958*

George VI, threepence, 1941. *Toned, die breaks on reverse, nearly uncirculated and rare thus.*
\$300

951*

George VI, shilling, 1946. *Light toning on reverse, otherwise full mint bloom, uncirculated.*
\$80



952

George VI, shilling, 1947. *Nearly uncirculated.*
\$70

959*

George VI, threepence, 1941. *Nearly uncirculated and rare.*
\$300



960*

George VI, threepence, 1942 without dot after date. *Subdued grey toned extremely fine and very rare in this condition one of the finest known of this variety.*

\$100

In a NGC slab as MS 62.

961

George VI - Elizabeth II, threepences 1947, 1948, 1950, 1951, 1952, 1953, 1954, 1955, 1956, 1957, 1958, 1959, 1960, 1961, 1962, 1963. *Some toned or with light spotting, extremely fine - uncirculated.* (16)

\$80

962

George VI, pennies, 1940, 1941, 1942, 1943, 1944, 1945. *Most with full mint red, carbon spots on the third and the fifth, otherwise nearly uncirculated - uncirculated.* (6)

\$150



part

963*

George VI, pennies, 1942, 1943, 1944 (illustrated), 1946. *All with full mint red, the first and third brilliant, the first rare with slight oxidising, uncirculated.* (4)

\$250

964

George VI, pennies, 1946, 1947, 1949, 1950, 1951, 1952. *Mostly with full mint red, the last three with tone spots, nearly uncirculated - uncirculated.* (6)

\$120

965

George VI - Elizabeth II, penny set, 1940-1965, including 1956 'strapless' and extras, 1942, 1952 and 1965. *Very fine - uncirculated, the following coins with full or almost full mint red, 1940, 1943-1946, 1950, 1952 (2), 1953, 1955, 1956, 1962-1964, 1965 (2).* (29)

\$350

966

George VI, halfpennies, 1940, 1941, 1942. *Nearly full mint red, virtually uncirculated, the last rare.* (3)

\$150

967

George VI, halfpennies, 1940, 1941, 1942, 1944, 1945, 1946, 1947, 1949, 1950, 1951, 1952. *Most with tone spots, mainly mint red, extremely fine - uncirculated.* (11)

\$70

968

George VI, halfpenny, 1942. *Partial mint red obverse, almost full mint red reverse, uncirculated and scarce.*

\$80

Ex Tom Hanley Collection.

969

Elizabeth II, halfcrowns, 1953, 1961, 1962, 1963. *Heavy toning, otherwise uncirculated.* (4)

\$50

970

Elizabeth II, shillings, 1956, 1957, 1958 (Broken Back), 1959, 1960, 1961, 1962, 1963. *The first with tone spots, the third scarce, uncirculated.* (8)

\$200

971

Elizabeth II, sixpences, 1953, 1954, 1955, 1956, 1957, 1958, 1959, 1960, 1961, 1962, 1963. *The first four toned, nearly uncirculated - uncirculated.* (11)

\$60

972

Elizabeth II, pennies, 1953, 1955, 1956, 1957, 1958, 1959, 1960, 1961, 1962, 1963. *All with some degree of toning, mostly mint red, uncirculated.* (10)

\$80



973*

Elizabeth II, penny, 1954. *Full mint red with light spotting on obverse, uncirculated, the key date.*

\$150

974

Elizabeth II, halfpennies, 1953, 1954, 1955, 1956, 1957, 1958, 1959, 1960, 1961, 1962, 1963. *Most mainly mint red, some with toning and spots, nearly uncirculated - uncirculated.* (11)

\$60

975

Elizabeth II, halfpenny, 1955; **George VI**, pennies, 1952 (2). *Mostly mint red, uncirculated.* (3)

\$100

976

Elizabeth II, halfpennies, 1957-1960, 1962-1964; pennies, 1957, 1959, 1962-1964; threepences, 1956, 1962-1964; sixpences, 1962-1964; shillings, 1962 half horizon, 1963, 1964; florins, 1962-1964; halfcrowns, 1962, 1963. *Uncirculated, the 1962 half horizon shilling and 1963 coins scarce.* (27)

\$100



977*

Elizabeth II, Royal Mint pre-release coin sizes trials, set of six, in bronze (2) and cupro-nickel (4) for cent, two cents, five cents, ten cents and twenty cents (2), with final edge designs. *Nearly uncirculated*. (6)

\$500

978

Elizabeth II, proof set, 1953, proof dollars 1976-9, 1981-4 mint set 1984, RNSNZ medals including Bledisloe 1935 1940(2), 1967 (silver gilt and bronze) 1969 silver (RAM) hard pplastic cased coin and medals (approx 30). Also Great Britain proof set 1971 and cupro nickel crown 1965 (4), 1972, 1977, 1981. All in one small carton. *Uncirculated - FDC*. (approx 60)

\$300

Ex Eric Horwood Collection.

979

Elizabeth II, proof sets, 1971-1981, proof-like sets, 1968 (blue case), 1969 (folder). *In cases of issue, FDC*. (13)

\$100

980

Elizabeth II, proof sets, 1972, 1973, 1975-1978, 1979 (2), 1980-1988, 1990. *The 1972 and 1973 sets have dirty packaging otherwise all sets FDC*. (18)

\$240

981

Elizabeth II, proof sets, 1978-1987. *In cases of issue, FDC*. (10)

\$100

982

Elizabeth II, proof sets, 1999-2002, 2004; proof silver five dollars, four coin set, 1998, Pride in NZ (KM.PS42). *In cases of issue, the second set scarce, FDC*. (6)

\$330



983*

Elizabeth II, proof gold ten dollars, set of two, 2000, Niagara/Claymore. *In timber case of issue, only 600 minted, scarce, FDC*.

\$400

984

Elizabeth II, proof silver five dollars, 1996 De Heemskerck, 1998 Dunedin, 1999 Wellington City, 2001 Royal Visit, 2002 Hector's Dolphin, 2002 Sky Tower, 2004 Chatham Island Taiko; proof gold gilded ten dollars, 1998 Benz Motoring; proof silver and gold plated ten dollars, Millennium. *In cases of issue, FDC*. (9)

\$200

985

Elizabeth II, proof dollars, 1972 (RAM case), 1973, 1974 Games, 1974 Day, 1975-1981. *In cases of issue, FDC*. (11)

\$110

986

Elizabeth II, proof silver dollars, 1973, 1974 Games, 1975-1978, 1979 (2), 1980-1982, 1983 Royal Visit, 1984, 1985, 1986 Royal Visit, 1989 Games. *The 1973 coin is toned, the rest FDC*. (16)

\$200

987

George V - Elizabeth II, threepence set, 1933-1965, including 1935, 1942 'single dot', 1956 'strapless' and spare 1934, 1952 and 1958; sixpence set, 1933-1965, including 1957 'strapless' and 1965 'broken wing' (3) and spare 1952. *The 1935 threepence is fine with a small rim bump at 1 o'clock otherwise all coins good very fine - uncirculated with some early dates dipped but still nicely matched quality sets*. (72)

\$800

988

George V - Elizabeth II, threepence - halfcrown, 1933-1965, collection includes 1935 threepence and two 1957 strapless sixpences and a few spares. *Stored in three Dansco press-in albums, very good - extremely fine*. (165)

\$450

989
George V - Elizabeth II, halfpenny - crown type set, missing Waitangi crown. In a Dansco album. *Fine - uncirculated.* (34)

\$100

990
George V - Elizabeth II, crown 1949, halfcrowns 1934, 1940 (3, one in a Seaby envelope), 1941, 1950, 1962 (2), 1963; florins 1933 (one in a Spink envelope), 1937; shillings 1935, 1945 and 1946 (both toned), 1946 (4 all bright); sixpences 1944, 1960, 1964; threepences 1965; penny 1957, halfpenny 1947. *Mostly extremely fine - uncirculated.* (26)

\$200

Ex Eric Horwood Collection.

991
George VI - Elizabeth II, halfpenny set, 1940-1965, complete with extras, 1945, 1946, 1950, 1953, 1957, 1965 (3); one cent, 1988, two cents, 1988, five cents, 2004 (3). *Very fine - uncirculated, the following coins with full or almost full mint red, 1940-42, 1947, 1950-52, 1955, 1956, 1958-65.* (37)

\$250

992
George VI - Elizabeth II, 1940 - 1965, halfpenny - penny, date set with some duplication; proof sets, 1972, 1973, 1975, 1976, 1979, 1981, 1983, 1984, 1985, 1986; proof silver dollars, 1985 The Black Stilt, 1986 The Kakapo, 1986 Royal Visit. *Very good - FDC.* (14)

\$180

993
George VI - Elizabeth II, halfpenny, 1940; penny, 1964 (2); dollar, 1967 (2), 1969, 1970 Mt Cook (2); select coin set, 1965; N.Z. Dominion Day Medal, 1907 (M.1907/1); Canada, mint set, 1967 (package damaged); Great Britain, farthing, 1884, 1894, 1897, 1905 (2), 1919, 1939, 1952 (2), penny, 1967 (3), threepence, 1908. *The first coin has 50% mint red obverse and full mint red reverse, the rest very fine - uncirculated.* (31)

\$50

994
Communion tokens, Presbyterian Church of Otago, undated (c.1864) (L.373; B.5439); First Church Otago 1848 (Dunedin) (L.374; B.5444) in white metal, two others in pewter. *The first good very fine, the others extremely fine and rare.* (4)

\$300



995*
Wairarapa & East Coast Past. & Agric. Society, prize medal in silver (28mm x 23mm) by E. A. Altman, Melb., holed at top for suspension, reverse inscribed "G. Sayer/1st Prize/Leaf Tobacco/1883". *Surface marks from having been worn as a fob, otherwise fine and rare.*

\$350

996
Coronation 1902, Barratt & Co's, in brass (22mm) (M.1902/10) (2, one without suspension loop and pierced at top); H.M.S.Ophir, 1901, in copper (27mm) (M.1901/10) pierced at top; Otago Centennial, 1948, in gilt (31mm) (2); Decimal Coinage Introduced, 1967, The Royal Numismatic Society of New Zealand, in silver (62mm) approximate silver weight, five ounces, cased (some foxing to interior). *The first three items very good - fine, the last three items uncirculated.* (6)

\$100



997*
New Zealand, Auckland Kennel Club, gold medal, 8.7 grams (probably 9ct), obv. dog, 1909 rev. Essay/ Prize/ Awarded To/ Master/ Harry Tizard, with loop and ring support. *Very fine.*

\$250



998*
New Zealand, British Empire Games, Auckland 1950, brooch in silvered brass (42mm x 20mm), pin back. *Very fine.*

\$100

AUSTRALIAN GOLD COINS

SYDNEY MINT SOVEREIGNS



999*
Queen Victoria, first type, 1855. *Fine.*

\$1,500

1000
Queen Victoria, second type, 1857. *Nearly very fine/good very fine.*

\$400

Ex Ted Murphy Collection.



1001*
Queen Victoria, second type, 1857. *Fine.*

\$350



1007*
Queen Victoria, second type, 1863. *Good fine.*

\$350



1002*
Queen Victoria, second type, 1858. *Very fine/good very fine.*

\$600

1008
Queen Victoria, second type, 1863. *Reverse scratch, otherwise good fine.*

\$400

1009
Queen Victoria, second type, 1864. *Fine/good fine.*

\$320

Ex Ted Murphy Collection.



1003*
Queen Victoria, second type, 1859. *Fine/good very fine.*

\$300

1010
Queen Victoria, second type, 1864 and 1865. *Very good; fine. (2)*

\$600



1011*
Queen Victoria, second type, 1865. *Rim nick, good very fine.*

\$450

Ex Roy A. Dunstan Collection.



1004*
Queen Victoria, second type, 1860. *Very good/fine.*

\$350



1012*
Queen Victoria, second type, 1866. *Good very fine.*

\$450



1005*
Queen Victoria, second type, 1861. *Good fine.*

\$350

1013
Queen Victoria, second type, 1866. *Very fine/good very fine.*

\$400

Ex Ted Murphy Collection.



1006*
Queen Victoria, second type, 1862. *Fine.*

\$350

1014
Queen Victoria, second type, 1866. *Die break rim to 1 of date, good fine.*

\$350

1015
Queen Victoria, second type, 1867 and 1868. *Good fine; very good. (2)*

\$600



- 1016*
Queen Victoria, second type, 1870. *Good very fine.*
 \$450
- 1017
Queen Victoria, second type, 1870. *Good fine/very fine.*
 \$320
- Ex Ted Murphy Collection.
- 1018
Queen Victoria, second type, 1870. *Polished, very good.*
 \$250

SYDNEY MINT HALF SOVEREIGNS

- 1019
Queen Victoria, second type, 1857, 1858 and 1861. *Very good; good; fair.* (3)
 \$400



- 1020*
Queen Victoria, second type, 1858. *Obverse scratch otherwise good fine.*
 \$200
- Ex Roy A. Dunstan Collection.

- 1021
Queen Victoria, second type, 1858. *Fine/nearly fine.*
 \$180



- 1022*
Queen Victoria, second type, 1859. *Crinkled and straightened, otherwise nearly extremely fine.*
 \$750
- Ex Golden triangle, Ballarat find.

- 1023
Queen Victoria, second type, 1859. *Fine.*
 \$300
- Ex Ted Murphy Collection.

- 1024
Queen Victoria, second type, 1861. *Fine.*
 \$200

- 1025
Queen Victoria, second type, 1864. *Nearly fine/fine.*
 \$180

IMPERIAL SOVEREIGNS - SHIELD REVERSE

- 1026
Queen Victoria, 1871, 1872 and 1873 Sydney. *Good fine - good very fine.* (3)
 \$900

- 1027
Queen Victoria, 1872 and 1874 Melbourne. *Nearly extremely fine; good very fine.* (2)
 \$650

- 1028
Queen Victoria, 1875, 1877, 1878 and 1879 Sydney. *Fine - very fine.* (4)
 \$1,200

- 1029
Queen Victoria, 1877 Sydney and 1882 Melbourne. *Good fine; very fine.* (2)
 \$700

- 1030
Queen Victoria, 1877, 1879, 1880, 1884 Sydney. *Very fine - extremely fine.* (4)
 \$1,500

- 1031
Queen Victoria, 1881 Melbourne. *Good fine and scarce.*
 \$350

- 1032
Queen Victoria, 1882, 1884 and 1885 Melbourne. *Very fine - nearly extremely fine.* (3)
 \$950

- 1033
Queen Victoria, 1882 - 1886 Sydney. *Fine - nearly extremely fine.* (5)
 \$1,500



- 1034*
Queen Victoria, 1887 Sydney. *Nearly extremely fine.*
 \$400

IMPERIAL SOVEREIGNS - ST GEORGE REVERSE

- 1035
Queen Victoria, 1871 small BP, 1872, 1873 and 1874 Sydney. *Fine - very fine.* (4)
 \$1,200

- 1036
Queen Victoria, 1872 Melbourne. *Nearly very fine and scarce.*
 \$400

1037
Queen Victoria, 1873 and 1874 Melbourne. *Good very fine; nearly very fine.* (2)

\$650

1038
Queen Victoria, 1874 Melbourne. *Very fine/good very fine.*

\$300

Ex Ted Murphy Collection.

1039
Queen Victoria, 1875 - 1877 Melbourne. *The last good fine, others good very fine.* (3)

\$950

1040
Queen Victoria, 1875, 1879, 1880, 1881 no BP, 1883, 1884 and 1886 Melbourne. *Very fine - nearly extremely fine.* (7)

\$2,400

1041
Queen Victoria, 1875 and 1876 Sydney. *Very fine.* (2)

\$650

1042
Queen Victoria, 1878-1881 Melbourne, all long tail. *Good fine - nearly very fine.* (4)

\$1,200

1043
Queen Victoria, 1879 Sydney. *Good fine and scarce.*

\$350

1044
Queen Victoria, 1880, 1881 no BP, Sydney. *Very fine/good very fine; extremely fine.* (2)

\$700

1045
Queen Victoria, 1882-1886 Melbourne, the 1884 and 1886 portrait 2, others portrait 1. *Fine - good very fine.* (5)

\$1,500

1046
Queen Victoria, 1882-1887 Sydney. *Fine - good very fine, the 1883 scarce.* (6)

\$1,900

1047
Queen Victoria, 1883 and 1886 (3) Melbourne. *Very fine - nearly extremely fine.* (4)

\$1,300

1048
Queen Victoria, 1883 Sydney. *Nearly extremely fine.*

\$300

Ex Ted Murphy Collection.

1049
Queen Victoria, young head, 1884 and 1887 Sydney; old head 1897 Melbourne. *Very fine - good extremely fine.* (3)

\$1,000

1050
Queen Victoria, 1885 Melbourne. *Very fine/good very fine.*

\$300

Ex Ted Murphy Collection.

1051
Queen Victoria, young head, 1886 (2) and 1887 Melbourne. *Extremely fine - good extremely fine.* (3)

\$1,000

1052
Queen Victoria, 1886 Melbourne, old head 1893 Melbourne. *Nearly extremely fine.* (2)

\$650

1053
Queen Victoria, 1886 Melbourne, 1899 Sydney. *Very fine.* (2)

\$530



1054*
Queen Victoria, young head 1887, Melbourne. *Nearly extremely fine.*

\$350

1055
Queen Victoria, Jubilee head, 1887-1893 Melbourne. *Good fine - nearly extremely fine.* (7)

\$2,100

1056
Queen Victoria, Jubilee head, 1887-1893 Sydney. *Fine - good very fine, the first scarce.* (7)

\$2,250

1057
Queen Victoria, 1888 Sydney. *Good.*

\$250

1058
Queen Victoria, Jubilee head, 1889 Sydney and 1893 Melbourne. *Extremely fine.* (2)

\$650

1059
Queen Victoria, 1890 Melbourne. *Nearly extremely fine.*

\$300

Ex Ted Murphy Collection.

1060
Queen Victoria, old head, 1893-1901 Melbourne. *Fine - good very fine.* (9)

\$2,700

1061
Queen Victoria, old head, 1893-1901 Sydney. *The 1899 fine, others good very fine - good extremely fine.* (9)

\$2,700

1062
Queen Victoria, 1896, 1897 Sydney. *Nearly extremely fine/ extremely fine.* (2)

\$600

Ex Ted Murphy Collection.

1063
Queen Victoria, old head, 1900 Melbourne. *Nearly very fine.*

\$300

1064
Queen Victoria, old head, 1901 Melbourne, Perth and Sydney.
*In fitted timber case, together with Perth Mint Federation
 Sovereign Set certificate no.46, fine - very fine.* (3)
 \$750

1065
Queen Victoria, old head, 1901 Melbourne, Perth and Sydney.
*In fitted timber case, together with Perth Mint Federation
 Sovereign Set certificate no.55, fine - very fine.* (3)
 \$750

1066
Edward VII - George V, 1902 Melbourne, 1914 Melbourne.
Good very fine/nearly extremely fine. (2)
 \$600

Ex Ted Murphy Collection.

1067
Edward VII, 1902-1910 Melbourne. *Fine - nearly
 uncirculated.* (9)
 \$2,700

1068
Edward VII, 1902-1910 Perth. *Fine - nearly extremely fine.*
 (9)
 \$2,700

1069
Edward VII, 1902-1910 Sydney. *Very fine - nearly
 uncirculated.* (9)
 \$2,700

1070
George V, 1911-1918 and 1925 Melbourne. *Nearly
 uncirculated - uncirculated.* (9)
 \$2,700

1071
George V, 1911 - 1919 Perth. *Extremely fine - uncirculated.*
 (9)
 \$2,700

1072
George V, 1911-1919 and 1925 Sydney. *Nicely matched set,
 nearly uncirculated - uncirculated.* (10)
 \$3,000

1073
George V, 1912 and 1917 Sydney, 1914 Melbourne. *Nearly
 uncirculated.* (3)
 \$900

1074
George V, 1912, 1914, 1915 Sydney. *Good very fine -
 extremely fine.* (3)
 \$450

Ex Ted Murphy Collection.

1075
George V, 1913 Melbourne. *Very fine.*
 \$250

1076
George V, 1915 Melbourne. *Uncirculated.*
 \$300

Ex Roy A. Dunstan Collection.

1077
George V, 1915-1920 Perth. *Nearly uncirculated -
 uncirculated.* (6)
 \$1,800

1078
George V, 1920-1923 Perth. *Nearly uncirculated -
 uncirculated.* (4)
 \$1,350

1079
George V, 1923 and 1924 Melbourne, 1924 Perth. *Extremely
 fine - good extremely fine.* (3)
 \$1,000

1080
George V, small head, 1930 and 1931 (2) Perth. *Extremely
 fine - good extremely fine.* (3)
 \$1,000

IMPERIAL HALF SOVEREIGNS



1081*
Queen Victoria, 1883 Sydney (McD.25). *Brushed to clean
 otherwise good fine.*
 \$400

1082
Queen Victoria, young head, 1887 Melbourne. *Fine.*
 \$200

1083
Queen Victoria, 1889 Sydney, old head 1893 and 1900
 Sydney. *Fine - very fine.* (3)
 \$600

1084
Queen Victoria, 1891 Sydney, with JEB (McD.38). *Very
 fine.*
 \$150

1085
Queen Victoria, 1891 Sydney, no JEB (McD.38a). *Rim nick
 and scratches otherwise good very fine.*
 \$250

1086
Queen Victoria, 1891 Sydney J.E.B., another without J.E.B.;
 1893 Melbourne. *Fine - very fine.* (3)
 \$600

1087
Queen Victoria, Jubilee head 1893 Melbourne. *Fine.*
 \$150

Ex Ted Murphy Collection.

1088
Queen Victoria, Jubilee head, 1893 Melbourne; old head,
 1896 Melbourne. *Toned, fine.* (2)
 \$300

1089

Queen Victoria, old head 1893 Sydney. *Obverse scratch, very fine/ nearly extremely fine.*

\$200

Ex Ted Murphy Collection.

1090

Queen Victoria, 1893 Sydney. *Marks in reverse field, otherwise extremely fine.*

\$200

1091

Queen Victoria, 1897 and 1900 Sydney. *Nearly very fine.* (2)

\$400

1092

Queen Victoria, 1900 London, Edward VII 1908S. *First coin has a small gouge on reverse, second coin has scratch on obverse, otherwise fine - very fine.* (2)

\$250

1093

Edward VII, 1903, 1906, 1908, 1910 Sydney; 1909 Melbourne. *Very fine - nearly extremely fine.* (5)

\$800

1094

Edward VII, 1906 (2), 1908, and 1910 (5) Sydney. *Fine - good very fine.* (8)

\$1,200

1095

George V, 1912, 1914, 1915 and 1916 Sydney. *Extremely fine - uncirculated.* (4)

\$700

1096

George V, 1912, 1914 (3), 1915 (4), 1916 Sydney. *Mostly toned, extremely fine or better.* (9)

\$1,500

1097

George V, 1914, 1915 and 1916 (3) Sydney. *Good extremely fine - uncirculated.* (5)

\$800

1098

George V, 1914 Sydney. *Nearly uncirculated.*

\$150

Ex Roy A. Dunstan Collection.

1099

George V, 1915 Sydney. *Good very fine - nearly extremely fine.* (3)

\$450

1100

George V, 1916 Sydney. *Small scratch on obverse head, good very fine.*

\$150

MISCELLANEOUS

1101

Gold ingot, one ounce pure gold, 0.9997 fine, by Harrington. *Very fine.*

\$1,300

1102

Gold ingot, one ounce pure gold, 0.9997 fine, by Harrington. *Very fine.*

\$1,300



1103*

Gold nugget with quartz, as found in Charters Towers, with geologist's report giving specific gravity, gold weight 3.6327 ounces, gross weight 155.17 grams.

\$3,000

1104

Gold ingot, globular (15.49gms), virtually pure gold. *Extremely fine.*

\$600

1105

Australia, Queen Victoria, sovereign 1888 Melbourne, held by clamp in ring attached to bar (9ct) for use as a brooch or tie pin, total weight 12.31 grams. *Coin, good very fine.*

\$400

1106

Australia, gold sovereigns, (2), 1913P, jeweller's copies and correct weight. *Uncirculated.* (2)

\$500

1107

Australia, Edward VII, sovereign 1904 Melbourne, held by clamp in ring with scroll support for use as a brooch, total weight 12.50 grams. *Coin, good very fine.*

\$400

1108

Australia and Great Britain, assorted, mounted for jewellery, half sovereigns, 1897, 1907, 1911P, 1912, 1914S, 1915S (2); together with gold nugget five dollars, 1/20th ounce 1990, in wallet of issue. *Very good - uncirculated.* (8)

\$1,100

1109

Australia, Elizabeth II, gold two hundred dollars 1980, clip mounted within plain gold ring with loop support, total weight 11.6 grams. *Nearly uncirculated.*

\$400

1110

Australia, Elizabeth II, gold two hundred dollars 1989, Pride of Australia, clip mounted within ornate round support with loop attached, together with a small gold chain, in presentation case, total weight 18.0 grams. *Uncirculated.*

\$600

1111

Germany, jewellers copies of gold coins, Bavaria, 20 mark 1887D; Hamburg 5 mark 1877J, Prussia, 10 mark 1888A, 5 mark 1877A; Wurttemberg, 5 mark 1877F. *Mostly uncirculated.* (5)

\$500

1112

Great Britain, half sovereign housed within a gold 9ct ornate ring, total weight 9.1 grams.

\$250

1113

Netherlands, Wilhelmina, ten gulden, 1925. (KM.162), held by clamp in ring with scroll support for use as a brooch, total weight 11.04 grams. *Coin, extremely fine.*

\$400



1114*

Sovereign case, silver plated, unusual pattern, interior is bright silver colour. *Very fine.*

\$80



1115*

Money box, U.S.A., in metal (257mm long, 35mm wide, 155mm high), negro man eating watermelon while seated on a cart drawn by a donkey, beside donkey is a large cactus with a negro child at side with arms outstretched, money slot for one cent (U.S.A. penny) between man's feet, titled "Bad Accident" because when mechanism is activated donkey rears up upsetting cart, stamped on lid, "Patd Feb 2 1875". *All paint intact, good very fine.*

\$200

1116

Diamond engagement ring, 18ct white gold (gross 3.9gms) claw set with brilliant cut diamond (approx. 50 points) with four very small diamonds (approx. 1 point each) at sides.

\$600

1117

Diamond engagement ring, 18ct white gold (gross 2.5gms) claw set with brilliant cut diamond (approx. 25 points).

\$200

1118

Diamond jewellery, set of stud earrings, brilliant cut (approx. 10 points each); Oroton sterling silver chain (18 inches) and pendant set with a brilliant cut diamond (approx. 20 points).

\$270

1119

Diamond rings, 18ct white gold (gross 2.2gms) engagement ring claw set with old fashioned cut diamond (approx. 20 points) with two claw set side diamonds (approx. 4 points each); 18ct white gold eternity ring (gross 2.7gms) claw set with six brilliant cut diamonds (approx. 1 point each). (2)

\$200

1120

Diamond rings, modern design, 14ct white gold (gross 3.2gms) claw set with one brilliant cut diamond (approx. 10 points) and beside five graduating inlaid diamonds (approx. 4 points - 1 point); 18ct white gold (gross 2.6gms) claw set with three brilliant cut diamonds (approx. 5 points each). (2)

\$250

1121

Gent's diamond ring, 18ct yellow gold (gross 7.1gms) set with four brilliant cut diamonds (approx. 5 points each).

\$400



1122*

Gent's Mourning ring, in white enamelled gold with diamond "Eliz.-Wilkes ob Apr 16.1771 AE 34". *Very fine.*

\$500

Ex Eric Horwood Collection.

1123

Gent's gold rings, (5) 14 carat (49.4gms) plus gold capped tooth and 9 carat ring (Birmingham). *Fine - very fine.* (7)
\$800

1124

Jewellery, 9ct gold (gross 6.9gms) cameo ring; sterling silver rings with semi-precious stones (4); brooch in sterling silver set with coloured gemstone (2); sterling silver swivelling pendant set with four semi-precious stones, suspended from silver rope chain (15 inches); freshwater pearls in combination necklace (15 inches) with semi-precious stone clasp, together with matching earrings. (12)
\$250

1125

Onyx jewellery, stud earrings, three sets, very decorative hanging type, one in silver the other two in gold colour; dress rings (3) two in silver, one in gold colour; pendant with centre onyx and multiple multi-coloured stones on silver chain (18 and 1/2 inches). (11)
\$80

1126

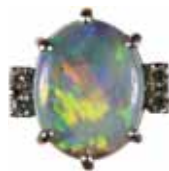
Opal jewellery, 9ct yellow gold (gross 3.1gms) oval white opal; 9ct yellow gold (gross 5gms), oval solid white opal on gilt sterling silver chain (19 inches); tiepin with safety chain, probably 9ct (gross 4.1gms) set with small moonstone; sterling silver ring set with an oval blue opal; another, cheaper, modern style heart ring, possibly silver. (6)
\$200



1126A*

Emerald and diamond ring, in white gold (18ct), central ovalcut natural emerald, four claw set and twenty-six brilliant cut diamonds. Claw and rubover set in an 18ct white gold upswept tapered design and cluster setting. Emerald weight: 3.71ct, emerald size: 12.04 x 8.78 x 6.21mm, diamond weight: approx 1.45ct total, colour I, clarity SI-I1, weight 12.1g. *Very fine.*
\$3000

Together with FGAA Certificate of Authenticity.



1127*

Opal ring, 18 ct white gold ring (estimated gold wt 6 gms), six-claw set with one solid, 4.18 cts, Lightning Ridge opal, reflecting brilliant flashes of red, green, yellow and blue, four diamonds, two at each side, claw set being full brilliant cut top commercial white diamonds of .04 cts each. *Extremely fine.*
\$2,000

Together with certificate of valuation dated 2 May 1989 for \$10,000.

1128

Pearl jewellery, string of pearls (14 inches) uniform size; three sets of earrings (2 sets are stud type); one brooch; bracelet (7 pearls); dress ring, unmarked, large pearl; dress ring in 9ct white gold (approx. 1.8gms), small natural grey coloured pearl.
\$100

1129

Rings and earrings, dress rings, two princess style, various different coloured stone designs, mostly in 9ct gold (gross 32.7gms) (10), sterling silver (1), not marked (1); stud earrings (2 sets) both in silver in Southern Asian style. (16)
\$450

1130

Rings, 18ct white gold (gross 2.2gms) old fashioned engagement ring claw set with diamond (approx. 8 points); 18ct white gold (gross 5.5gms) wedding ring recess set with three brilliant cut diamonds (approx. 5 points each); 18ct yellow gold (gross 2.6gms) ring set with white sapphire; 9ct yellow gold (gross 5.5gms) ring set with thirteen diamond-like stones. (4)
\$300

1131

Turquoise jewellery, all set in sterling silver, includes bangles (2), pendant on a sterling silver rope chain (20 inches), ring, earrings (5 pairs) all different, all but one set stud type. (13)
\$100

1132

Wedding ring, inscribed 18ct, weight 3.90 grams; gold chains fine links (2) weight 14.24 grams, both 18ct. *As new.* (3)
\$500

1133

White gold ring, 18ct (gross 3.8gms), snake design with sapphire head and six diamonds in tail.
\$120

1134

Cigarette case, hallmarked sterling silver (111mm x 83mm), 190 gms, marks for maker, HCF Ltd, Birmingham, 1951, machine-turned exterior, silver gilt interior. *With original fabric protective cover, extremely fine.*
\$100

Ex Mappin & Webb (Royal Silversmiths) 1972 Regent Street, London, in June 1964.

1135

Silver mounted ivory boar's tusk, various coins including 1890 crown, Irish farthing 1806, modern U.S.A (5), Birmingham Mint silver gilt Jubilee 1977 medal. *Very good - uncirculated.* (10)
\$100

1136

Gents gold (9ct) full hunter Waltham pocket watch c1920, top wind, plain A.W.C.Co case (50mm) # 240520, white porcelain signed dial with black Roman numerals, subsidiary seconds hand, 17 jewel Waltham movement serial #22636169, gold dust cover.
\$700

\$700



1137*
Gents gold (9ct) open face split seconds chronograph pocket watch Swiss Made c1910, top wind, case (50mm) #128649, gold dust cover, unsigned white enamel dial, two subsidiary dials and two centre seconds hands, with black Roman numerals.

\$1,400

1138
Ladies gold (18ct) half hunter pocket watch c1905, top wind, case (32mm) #25272, back plate with inscribed copperplate initials "L.B", front cover with black Roman numerals around display glass, gold dust cover, white enamel dial with black Roman numerals.

\$600



1139*
Ladies gold (18ct) full hunter pocket watch c1900, top wind, chased case (38mm) #79866, metal dust cover with inscribed naming "Alice Fairbairn", Swiss movement for Stewart Dawson & Co, white enamel dial with black Roman numerals.

\$550



1139A*
Cartier Vermiel ladies wristwatch, c.1980's, gold plated over sterling silver, quartz movement, original leather band and buckle, not running (may need new battery). *Very fine.*

\$300

1140
Watches, pocket watch in silver by Valgine, ornate filigree pattern over antique finished surface, open face; ladies ring watch with leaf-shaped cover, fits-all sizes band, gold coloured, pearls across top, all discoloured; marcasite ladies wrist watch by Estyl, dial with gold numbers and hands; another ladies Seiko Solar watch in white gold plate; another ladies Saunders marcasite wrist watch, most of chain missing. (5)

\$50



1141*
Cricket memorabilia, Salter 6-pound iron in black enamelled cast iron with painting of the legendary English cricketer, W.G. Grace, 1848-1915, on the base. *Some rust showing through the base, otherwise very fine.*

\$100

With research.

1142

George III, large antique Sheffield shaped oval meat plate (61 x 43 cm) with gadrooned border and coat of arms, within a drapery cartouche and motto "Arte Et Marte", circa 1800. *Fine*.

\$450

Ex The Barry Byrne Collection auctioned by Christie's Australia 15 July 1992 (lot 15).

1143

Horse racing memorabilia, silver shield by W.Kerr, removed from a winner's trophy, engraved, "Rosehill Cup / September 15th 1928 / Won By / Mr. J.J.Leahy's / Br. G. "Resource" / Trained by D.Lewis / Ridden by / J.C.Rowley. " *Very fine*.

\$80

John Jeremia Leahy, 1875-1959, grazier, stock-dealer and racehorse owner was a legendary stock and land dealer who assembled a pastoral empire to rival that of A.B.Triggs. He was a member of the Australian Jockey Club and owned the Ardsley and Woodlands (Bundilla) studs near Bathurst. Together with research sheet.

1144

Port, a bottle of Australian port, label reads, "R.Adams & Co. Pty. Ltd. Melbourne / 1919 / Port / Produce of Australia" around base of bottle, in relief, "This bottle is the property of The Traders Bottle Co.Ltd". *Bottle dusty and dirty from storage and label faded*.

\$100

Purchased in July 1969 with advised provenance "ex cellars of Menzies Hotel, Melbourne prior to demolition of the hotel."

1145

Wax seals samples, including British Australia Telegraph Co Ltd, Adelaide; National Bank Australasia Ltd; Bank of Australasia Superintendents Office; The Central Soap Company; Dept of Defence to Women of Australia For Duty Done, together with actual badge. All mounted and framed (275mm x 225mm). *Very fine*. (15)

\$150

1146

U.S.A. collectable tinnies, presidential candidate types, including scarce Gen. Douglas MacArthur varieties (5), Kennedy/Johnson (2), Kennedy/Byrd, Wilkie, Goldwater/Miller, and others such as the Audubon Society (2), some scarce. (15)

\$200

1147

U.S.A. election memorabilia, very large (150mm) Bush Inauguration tinnie and other large tinnies (31) featuring Barack Obama, Michelle Obama, McCain, Palin, Bush, Reagan, Nixon; small Obama/Biden lapel badges (2); holographic Giuliani/Thompson badge; playing card decks (2, Obama, The White House); White House card wallet; remnants from Berlin Wall in JFK packet; collector cards featuring Barack Obama (12); White House bottle opener. *Extremely fine - uncirculated*. (52)

\$100



1148*

Borneo (Brunei), tin cannon money, 215mm, 55 gms, late 19th century early 20th century, used for trading purposes, barter of goods, payment of fines and in engagement and wedding ceremonies (Opitz p.30). *Stored in an Asian style, silk lined box, fine and very scarce*.

\$1,000

1149

Bronze statue, Indian goddess (234mm high), cast, a few very small holes; carved timber statue of a naked native man (200mm high), shell eyes, small chip on ear; tortoise shell ornamental ladle (250mm long), green scoop and black handle carved in shape of a dragon; Maori club (380mm long), flat, carved design with Paua shell eyes, probably modern item made for sale to tourists. *Fine - very fine*. (4)

\$50

Ex Tom Hanley Collection.



1150*

Congo, axe or Zappozap, an ornate iron headed axe with a wooden handle that has been covered with beaten copper (length 45cm), the axe head being composed of five spokes radiating from the handle, two of these are twisted into complicated loops, a human face is featured on the central spoke on each side of the axe. *Very fine*.

\$1,000

These axes were insignia of rank worn for parades and ceremonial display. They could not be owned by a commoner and although they represented wealth, they were not used as currency. Zappozaps take their name from a notorious brigand chief and slave trader (refer Quiggin, pp 63-64). \$\$ Ex P.Perekhist Collection, Spink Australia Sale 27 (lot 541).



1151*
Malaysia, Terengganu, mid 19th century, tin money tree, seven keping coins on twelve branches, 155mm long, 25.9 gms. *Stored in an Asian style presentation case, unrecorded, very fine and scarce.*

\$500

1152
Railways and Tramways, buttons, Queen Victoria crown (1), King's crown (8), Queen's crown (4) and uncrowned (3), Queensland Railways (3), N.S.Wales Railway (8), South Maitland Railways (1), Victoria Railways (1), MTM (Adelaide) (2). *All mounted on a board and described, fine - extremely fine.* (15)

\$50

1153
South Australian Railways & Tramways Assn, badge (37mm x 25mm) in enamel and copper-plated bronze, ensigned by a crown with loop suspension, impressed on reverse with number, 1640, by P.J.King, Melbourne; Municipal Tramways Trust, Adelaide, South Australia, employee passes, oval green enamel and bronze badge (30mm x 20mm) loop suspension, impressed no.0070 on reverse, made by A.J.Parkes, Brisbane; another circular red and white enamel and bronze badge (23mm) loop suspension, impressed no.2385 on reverse, made by A.J.Parkes, Brisbane. *Very fine - extremely fine, the first rare.* (3)

\$60

1154
John F. Kennedy, collection of photos, some in colour, mostly 10x8 inches, and two memorial service cards for his funeral featuring his photo on one side and an extract from one of his famous speeches on the back. *Extremely fine.* (14)

\$50

1155
The Chronological Tree of Victorian History, wall chart (68cms x 105cms), c1873, printed and published by John Paten, designed and written by James McKain Meek, photo-lithographed by John Noon Crown Lands Office; Reproductions of Warrant to Execute Mary Stuart Queen of Scots AD 1587; Warrant to Execute King Charles the First AD 1618 (37cms X 55cms). *Chart has rust stains, tears mostly in margins, only six or eight words missing, warrants with tears, good.* (3)

\$150

1156
Photography Studio sample cards, c1900, part and complete, including Asti, King Street, Sydney; Talma Studios, George St, Sydney; Kia-Ora Studio, Seymour, Vic; Hurtle H.Jenkins, Kalgoorlie; A Galloway, Kurri Kurri & Cessnock; A.W.Melrose, Ryrie St, Geelong. Housed in an album. *Good - very fine.* (90)

\$120

1157
Print Panorama of Sydney NSW, in the Year 1829 as painted by Robert Burford, printed and published by Lake & Sons Pty Ltd, Sydney & Melbourne from the original in the possession of Mr. J. Feldheim; six photocopy plates of Circular Quay, 1788-1888 together with receipt from the public Library of New South Wales, 1956. *Fine.* (7)

\$100

From the estate of the late G. C. Heyde who selected the site at Circular Quay of the Unilever Building.

1158
Australia, Postcards, all featuring ferries, c.1898-1905, in colour are, ferries berthed at Circular Quay, ferry entering Mosman's Bay, Milson's Point Horse Ferry and Manly ferry, in black and white are, "Rose" Lane Cove River ferry at the wharf and a Parramatta River ferry about to go under the Ryde Bridge. *Three cards used, very fine and scarce.* (6)

\$40



part

1159*
Great Britain, a group of postcards showing the unveiling of the Hawick "1514" Memorial and associated games, includes the unveiling ceremony, the large local crowds, the monument, the procession and band, the "Snuffing", various games scenes, "the chase, Hawick Common Riding 1914" and "the Reels at the Games", all real photos. *Rare as a group, mostly extremely fine.* (15)

\$180

1160
Historic Melbourne postcards, includes seven in colour, one features the Exhibition Buildings, also one of the Fremantle Town Hall, W.A. and a few of individuals, all c.1920s. *A few damaged, otherwise fine - very fine.* (18)

\$50

1161
Postacrds, featuring Cairo, the pyramids and tombs, English scenes and an entertainment related card from the Gotham Grill Room, New York, three in colour. *Very fine.* (12)

\$50

1162
Vintage postcards, Jerusalem, Nazareth, Bethlehem, Jaffa, Hebron, The Dead Sea, The Jordan, Haifa, Tel-Aviv, photochrome black and white scenes, interesting and historic unused cards. *Very fine.* (70)

\$150

1163
Cigarette Cards, Wills (Specialities), Arms of the British Empire (1910), fairly complete set (43/50) plus two spares. *Very good - extremely fine.* (45)

\$30

1164
Stereographs, by George Rose, Australian Commonwealth Celebrations, Duke of York Celebrations. *Very good.* (65)

\$170

1165
Australian match box labels, album containing federal safety matches, Royal Australian Navy ships badges (1-42) complete; Captain Cook series (42) complete; NSW town emblems (25/42); Aboriginies (18); Road Safety (38). *Mostly very fine - extremely fine.* (165)

\$40

OLYMPIC MEMORABILIA

1166
Melbourne 1956, Olympic Games tin badges from Lux and Lifebuoy, a complete set of twenty badges including swimming - Dawn Fraser, Murray Rose, Jon Hendricks, athletics - Hector Hogan, Shirley Strickland, Kevin Gosper, John Landy, boxing - Tony Madigan; also original card for two badges. *Fine - extremely fine.* (21)

\$250

1167
Melbourne 1956, badge in white metal, emu and kangaroo, painted Australia and Olympic rings, 1956 below; badge in gilt with painted rings, 1956 in a boomerang below; Polish Olympic Committee, 1956, medal in gilt bronze (80mm). *Pin damaged on first badge, light corrosion on second, otherwise very fine - extremely fine.* (3)

\$170

1168
Sydney Olympic Games, enamelled pin collection, all large pins, includes, Lindemans set of four; Sun-Herald set of six (500, 400, 300, 200, 100 days to go and the Games begin); AMP set of three; Official Airline Team Partner set of three (Air New Zealand, Malaysia Airlines, South African Airlines); John Hancock set of three; Sydney 2000 jigsaw-style four-piece set no. 058/600; Bonds supporter; Sid, Millie and Ollie pins (4) - See You in Sydney, Surf the Net, Working up to Sydney 2000, and Fun of the Games; Commemorative Medal for 2nd Anniversary of the Olympic Store, 19 May 1999, certificate no. 0154, by Perth Mint; necktie with leather tag stamped, Fun Games / '60' Plus / For / Calgary (1977) Seniors. *All sets and individual badges and the medal are cased, uncirculated.* (30)

\$100

Ex Frank Seckold Collection.

1169
Olympic Games pins, Sydney 2000, a variety of sponsor, media, bid and foreign team pins (29); 9th FINA World Swimming Championships Fukuoia 2001 tinnie (3); East Asian Games 2001 Osaka pin; World Team Table Tennis Championships 2004 Qatar, pin and keyring; Sydney 2000 Olympics T-shirt by Bonds, size M; Olympic Millennium Collection envelopes, four packets of twenty each. *Uncirculated.* (40)

\$100