

MISCELLANEOUS

1406

Australia, Queen Victoria, Jubilee head sovereign, 1887M with boomerang and suspension loop fitted at top (tot wt 9.11g); Edward VII, sovereign, 1907M with scroll mount fitted at top (tot wt 8.53g); both coins sweated and hence mintmarks barely legible. *Good; very good.* (2)

\$730

1407

Australia, Queen Victoria, half sovereign, 1900 Perth. *Set in 9 carat gold chain link necklace and held in surround mount, very fine.*

\$450



1408*

Australia, George V, half sovereign, 1914 Sydney mounted onto a decorative vintage 15ct gold brooch bar (tot wt 8.17g). *Dent at one end of brooch bar, otherwise good very fine.*

\$300



1409*

Austria, Franz Joseph I, ten corona, 1905 set into an 18ct gold ring (tot wt 11.2g), with ornate voided scroll pattern on shank and around the sides. *Good very fine.*

\$400

1410

France, Republic, ten francs, 1905, jeweller's cast copies in gold. *Extremely fine.* (2)

\$200



1411*

Great Britain, George III, spade guineas 1791 and 1798, half guinea 1793, set in gold (probably 18ct) as a brooch (tot wt 33.4g, 60x57mm), ring top and pin-back suspension. *Extremely fine.*

\$1,100

1412

Great Britain, Edward VII, two pounds, 1902 with scroll mount fitted at top (tot wt 16.49g). *Contact marks from wearing, otherwise fine.*

\$720

1413

Great Britain, Edward VII, half sovereigns, 1908 fitted into ornamental scroll mounts (tot wt 2x5.19g = 10.38g). *Fine.* (2)

\$400



1414*

USA, half eagle Coronet head gold five dollars, 1906S with scroll mount fitted at top (tot wt 8.76g). *Sweated, otherwise fine.*

\$370

1415

Various collectables, including coins, Spanish eight reales c1660s, Australia, pennies (3, including a double-header in mount) and a 1919M sixpence, counterstamped copper Portuguese and a German States copper piece both c1700; Victoria Amateur Boxing prize fob in silver and enamel (1921); Egypt, pill-box silver and enamel (damaged) cWWI; Souvenir mirror, Canberra 1927, Parliament House; Ginger Meggs tinnie; Casino Canberra \$2.50 chip and a base metal dolphin pendant. *Fine - very fine.* (13)

\$100



1416*
Double sovereign case, in gold (9ct, tot wt 28.3g, 55x28x13mm), by M&L (Minshull & Latimer, Birmingham), hallmark for Birmingham 1900. *Dents in lid, good firm hinge and well sprung coin receptacles, fine.*

\$750

1417
Sovereign case, in 18 carat gold, crown hallmark (17.25g). *Fair.*

\$300

1418
Double sovereign case, Victorian, plain case in silver (60x40x15mm), hallmark for Chester 1889. *Firm hinge and coin receptacles, very fine.*

\$120

1419
Single sovereign case, c1900, chased design (35mm), hallmark for Birmingham, date letter indistinct; another (30x10mm), hallmark for Chester 1896. *Fine. (2)*

\$150



1420*
Single sovereign case, rolled gold plain case (30mmx13mm), by Dennison Watch Case Co. *Good firm hinge and well sprung coin receptacle, good very fine.*

\$100

1421
Sovereign case, rolled gold, made in England by A.L.D.Dennison Watch Case Co., Guaranteed to wear 20 years. *Good very fine.*

\$100

1422
Coin carrying case, attachee style black case, lockable with keys, with six coin trays each holding 24 crown sized coins and one tray for medals holding 15 medals, made in Italy by Abafil, model, 'med diplomat'. *Very fine.*

\$100

1423
Plastic album pages by Renniks, a large quantity, unused as bought, plus 2x2 holders, unopened, all in one large carton as remaindered from a dealer's stock, also a Renniks album with decimal and pre-decimal silver. *Poor - uncirculated.* (approx 700)

\$200

1424
China, Po Sang Bank, 10g fine gold 9999 ingot. *Uncirculated.*

\$500

1425
Silver ingots, all one ounce each, one features the Ten Commandments, two have a facing crowned lion's head and marked 'Scottsdale Silver', and the last two feature a cornucopia emanating from the ear of an ancient goddess. *Extremely fine. (5)*

\$100

1426
Gent's pocket watch, Brevet repeater, full hunter in gold (9ct, tot wt 82.5g, case 53mm), white porcelain dial with subsidiary seconds hand, black Roman numerals and hands, top wind (missing winder); also full hunter pocket watch case in gold (18ct, tot wt incl springs 62.6g, 53mm), no movement. *The first with loose bezel and not operational, fine. (2)*

\$2,500



lot 1427



1429

Gent's pocket watch, full hunter, by Dennison Watch Case Co Ltd, rolled gold, top wind, engraved in back 'Presented to/Dick Walsh/By His/Railway and Town Friends/of/Narrandera/10.7.37'. *Missing hour hand, loose glass, not operational.*

\$100

1430

Gent's half hunter pocket watch, movement marked, 'Touchon/Geneve', appears to be silver, silver dial with silver Roman numerals, seconds sub dial, gilt floral decoration in centre, key wind, back of case with crudely inscribed initials, 'F.S.' and inside inscribed in running script, 'F.Steele', no key; curved fang pendants (5cm long) (3), with basket weave suspension at one end, one with sticker, 'Made in Philippines'; keyring attached to an Australian 1923 penny; another attached to a Great Britain 1967 penny enclosed in triangular shaped clear plastic; Lucky Tiki pendant in green plastic; plastic Scottie dogs (2, one black, one white), other bits and pieces. *Working order of watch not known, good - very fine.* (lot)

\$70

Ex Dr Gordon C.Shortland Collection.

1427*

Gent's pocket watch, Elgin full hunter, top wind, ornate engine turned case (42mm) in two tone gold (18ct), total weight of watch (87.2g), production year: 1881, 15 jewel movement number 895473, run quantity: 1,000, production dates: 1877 to 1891, white porcelain dial, with Roman numerals and subsidiary seconds hand; together with ornate fob chain in gold (probably 18ct, 14.3g, 140x15mm). *Very fine condition, the watch in running order but not tested for accuracy.*

\$2,000



1428*

Gent's pocket watch, c1919, Hebdomas 8 Days, top wind, open face with skeleton window at bottom, silver case (45mm), white enamel dial with decoration, black Arabic numerals and hands, spring Breguet lever movement. *In going condition but not tested for accuracy, extremely fine.*

\$250

1431*

Gent's pocket watch, Rolex, open face c1938, rolled gold case (43mm) number 51982, top wind, champagne metal dial with subsidiary seconds hand, black Roman numerals and hands, dial, case and 15 jewel movement all signed; together with curb link fob chain in gold (tested 15ct, 37.0g, 40cm). *Marks on back of watch, in running order but not tested for accuracy, very fine condition.*

\$850



1434

Gent's silver hunter pocket watch, c1930, back key wind, engine turned case (52mm) with hallmark for London 1929, initials engraved on front, white enamel dial, black Roman numerals, black metal hands including a subsidiary seconds hand, dial and movement signed G.Crisp, Melbourne, movement number 5626. *In running order but not checked for accuracy, with key, very fine.*

\$80

Ex Ian T.Cummins Collection, Noble Numismatics Sale 113C (lot 4140).

1435

Gent's pocket watch movement, Swiss made, c1900, repeating chronograph (45mm), white enamel dial, subsidiary seconds and sweep hands, black Roman numerals. *Good condition, not known if operational.*

\$50

1432*

Gent's pocket watch, c1860s, silver case (55mm) with coloured illustrated enamel dial, sweep seconds hand, key wind, markings suggest Asian, possibly Netherlands-Indies make. *Not working, very fine.*

\$300



1436

Assortment of pocket watches, several damaged, noted one silver Hunter case but no works; also two silver Hunters by Rothermans, London, one dated for London 1880, key wind, glass loose, the other dated for London 1878, key wind, glass missing, minute hand broken and seconds hand missing; a silver Hunter dial marked for A.Saunders, 809-817 George St, Sydney, dated for Birmingham 1908 by case maker, William Ehrhardt, key wind, together with a silvered pocket watch chain; another silver Hunter, no name on dial, key wind, missing glass and minute hand; a modern gold-like Hunter by Le Shale; three stop watches, two appear to be working; various other pocket watches, all base metal and several damaged. *Poor - very fine.* (18)

\$280

1437

Watches, includes half hunter pocket watch, marked Westclox Pocket Ben (dial faded); wrist watches includes Timex Nautica case and bracelet only; Rip Curl Surf Watch in stainless steel with black dial and rubber bracelet; small Swiss Army watch with stainless steel bracelet, loose at one end because connecting rod on watch missing; Lorus gilt case model V501-X317, with expandable gilt bracelet; Seiko gilt case model 1NOO-6E90, with flexible link gilt bracelet; Corocraft in silvered case (glass cracked), with voided chain bracelet; marcasite and stainless steel watches (3), one by Timor, one by Waltham and another unmarked, the Waltham in excellent condition and the back of the case inscribed, 'Joan/From the/Nurses/SJH'; cigarette lighter, no maker's name, gas operated; vintage portable ashtray tin in polished brass with textured base and enamelled lid featuring a top hat, cane, glass of wine, a flower, a mask and a smoking lit cigarette; vintage travelling miniature manicure set of four in elaborately decorated silvered tube; small plastic doll (approx 12.5cm high) dressed in a Grenadier Guards' uniform. *Working condition of watches not known, mostly fine - extremely fine.* (14)

\$100

1433*

Gent's pocket watch, Rolex, open face, c1940s, nickel case (50mm), top wind, signed Rolex porcelain dial with subsidiary seconds hand, black Roman numerals and hands; together with sterling silver fob chain (33cm) graduated links. *The watch in working condition but not tested for accuracy, extremely fine.*

\$250



1438*

Gent's wristwatch, Rolex Oyster Perpetual, c1960s, steel and gold (14ct) case (36mm) and original Rolex bracelet, black dial, date at 3'oclock, gold baton numerals and hands including sweep seconds hand. *In running order but not tested for accuracy, bracelet floppy and well worn.*

\$1,250



1440*

Gent's wristwatch, Omega automatic, in 18ct gold with silvered dial with gold bar indicators, second hand and day-date window, with an 18ct gold bracelet (total wt 74.92g). *Appears to be in working order, dial with some loss of colour and glass scuffed, otherwise very fine.*

\$1,100



1439*

Gent's wristwatch, Rolex Aqua, c1940s, manual wind, gold case and back (31mm), Rolex signed cream metal dial with subsidiary blue seconds hand, red enamel hour and minute hands, gold Arabic numerals, old faux leather bracelet. *In working condition but not tested for accuracy, fine and rare.*

\$1,100



1441*

Gent's wristwatch, Titus, c1940s or 1950s, manual wind, two register chronograph, 18ct gold case and back (35mm), cream metal dial with subsidiary and sweep seconds hands, gold coloured hands and Arabic numerals, old snakeskin bracelet. *The dial a little down, in working condition but not checked for accuracy, fine.*

\$500



1442*

Gent's wristwatch, Illinois Watch Co., Springfield, Art-Deco, 'New Yorker', c1928, two tone metal dial with subsidiary seconds register, luminous Arabic numerals and main hands, 14ct gold filled signed case (35x27mm), number 8399760, manual wind, 17 jewel signed movement, number 5078274, modern leather bracelet. *Not working (overwound), with broken crystal, otherwise very fine condition and rare.*

\$500



1443*

Gent's wristwatch, International Watch Company, Schaffhausen, c1970s, rolled gold case and back (33mm) No. 1641796, automatic movement, champagne metal dial with date at 3 o'clock and sweep seconds hand, gold hands and baton numerals, after market rolled gold bracelet. *In working order but not tested for accuracy, very fine.*

\$400



1444*

Gent's wristwatch, Omega, c1950s or 1960s, manual wind, gold case and back (33mm), champagne Omega signed dial with subsidiary seconds hand, gold hands, Arabic and baton numerals, Omega signed crown, after market rolled gold bracelet. *In working order but not tested for accuracy, very fine.*

\$350



1446*

Gent's wristwatch, antique Doxa Regulateur two register chronograph, c1910, signed nickel case, backplate, movement and dial, case measures 55mm (without crown), white porcelain dial, with crack at top and repaired chip at bottom, manual wind, luminous number batons and steel hands, black leather bracelet. *In working order but not tested for accuracy, fine condition.*

\$250

Ex Robert Rossini Collection, Noble Numismatics Sale 103 (lot 1744).

1445*

Gent's or boy's wristwatch, Certina, c1940s, gold case and back (30mm) numbered 17559, automatic, cream metal dial with sweep seconds hand, gold Arabic and baton numerals, old brown leather bracelet. *In working condition but not tested for accuracy, very fine.*

\$250



1447*

Gent's wristwatch, Seiko Kinetic Diver's 200m, 5M62-OBLO, c2000, stainless steel case (42mm) with Seiko bracelet, turning bezel, luminous baton numerals and hands including sweep seconds hand, date at 3 o'clock. *Excellent condition, in running order but not tested for accuracy.*

\$200



lot 1446



part

1448*

Gent's wristwatch, Seiko DX Sealion M88 6106 8030, automatic, 25 jewels, day/date, c1960s, gold plated case (35mm) and bracelet, two register with gold hands including subsidiary seconds hand [illustrated]; also, ladies quartz Seiko, c1990s, gold plated case with brown leather bracelet. *The first in working order but not tested for accuracy, as new with original box and price tag of HK\$194; the second not running, extremely fine.* (2)

\$150



part

1450*

Gent's wristwatches, c1990s, Omega Seamaster quartz, date at 3 o'clock, rolled gold case with stainless steel back engraved as a presentation watch; Pierre Cardot, rolled gold case with stainless steel back, 17 jewel movement, date at 3 o'clock; Charles Sernard Classic, Swiss design, quartz movement, rolled gold with stainless steel back, the first two with metal bracelets, the last with black faux leather. *Very fine, none appear to be working, the first illustrated.* (3)

\$150



1449*

Gent's wristwatch, Seiko Automatic Diver's 200m, 7S26-0020, c2010, stainless steel case (40mm) with Seiko bracelet, turning bezel, luminous baton numerals and hands including sweep seconds hand, day and date at 3 o'clock. *Excellent condition, in running order but not tested for accuracy.*

\$150

1451

Gent's wristwatches, c1950s-1990s, base metal cases, includes Harley manual wind, Seiko automatic date, Omax quartz, Longines quartz and Laros quartz. *Not working, fine - very fine.* (5)

\$50

1452

Wrist and pocket watches, ladies Swiss made fancy silver hunter pocket watch (35mm), top wind; Olma, gent's Caravelle wristwatch, c1970s, gold plated with stainless steel back; Leons, gent's fashion wristwatch, c2010, chrome with leather strap; stop watches (2), cWW1 military in gun-metal and Junghans Meister, c1960s. *Some operating, fine - extremely fine.* (5)

\$250

1453

Wristwatches, various brands and models, a few ladies but mostly for gents, some brands noted include Bell & Rose (made in China replica), Casio, Certina, Citizen, Delta, Infiniti, Guess, Hamilton, Lorus, Olympic (with Australian opal dial), Orient, Seiko, Simex, multiples of some brands, also a few metal wrist bands; also a selection of various types of keys. *Some damaged, working order not known, poor - very fine.* (32+3 bands + approx 30 keys)

\$150

1454

Wristwatches, Constanz ladies, quartz with metal band, in original purchase packet and unused; Galaxie gent's by Elgin, quartz with metal bracelet; Lobar Collection gent's, quartz with metal bracelet; Seiko gent's (2), quartz with metal bracelets, one with day and date; Time Magazine gent's, time and date, quartz with metal bracelet; Rolex (3), two gent's one ladies, quartz and all replicas, two with leather band and one with metal band; also silvered spoons given to purchasers of Rolex at Bucherer stores, not sold but given only to purchasers, silver-plated and at the end and down the handle is marked, 'Rolex/Bucherer/Watches/Lucerne', in the ladle is depicted the 'Lion Monument' also known as the 'Lion of Lucerne'. *One replica poor; the rest good very fine - uncirculated.* (11)

\$150



1456*

Mickey Mouse wristwatch, Ingersoll, c1939, chrome plated steel, manual wind, case (30x25mm), leather bracelet. *Not running, some crazing to dial, loose crystal, fine.*

\$250



1455*

Mickey Mouse wristwatch, Ingersoll, c1930s, plated steel, manual wind, case (32mm), missing some links from bracelet. *Not running, reasonable dial, very fine.*

\$250



1457*

Mickey Mouse wristwatch, Seiko quartz, c1980s, sunburst, gold plated case with stainless steel back, case (33mm), gold plated bracelet. *Not running, may need a new battery, very fine.*

\$100



1458*
Ladies pocket watch, American Waltham Watch Co, ornate case (40mm) in three colour gold (18ct, tot wt 61.0g), model 1873-6, 13 jewel Royal movement no 2767352, white porcelain dial with subsidiary seconds hand, black Roman numerals and hands, floral case back set with five diamonds and a ruby, front shield panel with initials 'E.T.' inscribed; also, decorative fob chain in gold (probably 18ct, 10.0g, 150x13mm) set with a diamond in the centre and seed-pearls on the ends. *The watch in working order but not tested for accuracy, extremely fine, in fitted case.*

\$1,500

1459
Ladies wristwatch, Solvil et Titus, Geneva, manual wind in 18ct gold case with gold dial and black bar indicators, bracelet of American steel (tot wt 42.12g). *Appears to be not working, glass scratched and some surface bubbles and oxidation on dial, scratched on back of case, '2833/J/B', otherwise fine.*

\$300



1460*
Ladies wristwatch, Goering, Swiss Art-Deco, manual wind, 15 jewel movement, in white gold (18ct, tot wt of watch 10.0g, 28x15mm) and enamel, with remnants of cloth bracelet. *In going order but not checked for accuracy, very fine.*

\$200



1461*
Ladies wristwatch, Rolex c1920s, case in gold (9ct, tot wt 15.9g, 27x7mm), 15 jewel movement by W&D (Wilsdorf & Davis), white porcelain dial with black Roman numerals (red 12) and hands, signed case and movement, no bracelet. *In running order but not tested for accuracy.*

\$150

1462
Ladies wristwatch, Girard-Perregaux, gyromatic stainless steel case with stainless steel band. *Appears to be in working order, in plastic hinged-lid case by Saunders Ltd, Jewellers, Sydney, good very fine.*

\$150



1463*
Diamond dress ring, in 18ct gold, features 4x10pt diamonds claw set in the middle around a bezel set 1pt diamond and at each side are two rows of 5 and 4 baguette cut diamonds recess set and on the outside at each side is a row of 9x3pt diamonds claw set, all diamonds except the baguettes are brilliant cut and blended together to create a stunning display (tot wt 12.28g). *In a case, the jeweller's name blacked out, the ring extremely fine.*

\$2,000



1464*
Ladies diamond ring, solitaire of approx 1.0ct, slightly yellow, no visible inclusions, set in a white gold mount (18ct, tot wt 3.9g), finger size K. *Extremely fine, no gemological report available.*

\$1,500



1465*
White gold diamond ring, tapered band with a central bezel cut deep pink brown diamond of estimated weight 0.20 carat and hammer set either side with three small brilliant diamonds of total estimated 0.03 carats, stamped 18k, tested as rhodium plated 18ct gold, size U, total weight 4.7g. *Diamond of pink/brown tone, S12 clarity, good very fine.*

\$1,000

With valuation certificate for insurance replacement, dated 18/09/18, value \$8,200.



1466*

White gold diamond ring, split band set with a central brilliant diamond of estimated weight 0.15 carat and set either side of the band with small brilliant diamonds of estimated total weight 0.30 carat, stamped 18ct, size S, total weight 12.5g. *Diamond of yellow/brown tone, SI clarity, central stone is loose in setting, good very fine.*

\$800



1467*

Diamond ring, two toned, the raised central panel set with round brilliant diamonds of estimated total weight .43 carat and channel set on either side with small brilliant diamonds of estimated total weight .32 carat, size M, total weight 9.5g. *Diamond colour I-J, clarity P1, extremely fine.*

\$600



1468*

Diamond dress ring, with four single matching fitted rings, all in 9ct gold (tot wt 10.38g), the shanks with textured rhodium plated strips leading to an offset rectangular centre also with textured rhodium plate and pave set within the textured area are 23 simulat diamonds, the fitted single rings also feature a matching textured rhodium plated strip running from side-to-side across the top. *In a Secrets Shhh ring case, nearly uncirculated. (5)*

\$250



1469*

Ladies diamond dress ring, in 18ct gold (tot wt 3.58g), features open flower setting with 10 pt diamond in centre and eight 3 pt diamonds around the outside, all claw set. *Very fine.*

\$150



1470*

Dress ring, in 18ct gold (17.35g), elaborately designed 8-band fitted ring. *Very fine.*

\$620



1471*

Gent's 9ct gold ring, with Queen Victoria gold sovereign, 1875S, fitted into the top with a clip-ring and with a bright patterned border (tot wt 15.61g). *Good very fine.*

\$500

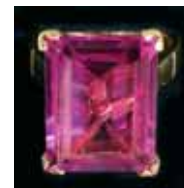


1472*

Wax seal signet ring, in 18ct gold (8.72g), features one style of the Farrington family crest with motto 'Le Bon Temp Viendre' (The Good Time Will Come), this is on the top of the ring in reverse and in relief so an impression can be made on paper or wax. *In Harrods case, very fine.*

\$350

See lot 3552 for medals to John Leonard Farrington CBE.



1473*

Yellow gold amethyst ring, cocktail style ring claw set with a central emerald cut amethyst of approximate weight 10.27 carats, stamped 14k, size L1/2, total weight 9.6g. *Extremely fine.*

\$350



1474*

Dress ring, in 18ct gold, features a divided band from sides of shank with a rope pattern and in the centre is a rhodium plated panel pave set with 13 diamond-like stones (tot wt 7.64g). *The pave set stones worn, otherwise extremely fine.*

\$250



1475*

Dress ring, green citrine baguette (10x20mm) in claw setting, with leaf shank all in 14ct gold (tot wt 5.51g). *Good very fine.*

\$120

1476

Vintage ladies dress ring, in gold (tested as 14ct; 4.76g), wide band with voided swirl pattern and set with diamond-like stones; locket (24x30mm), gold filled with textured pattern and overlaid with patterned bar diagonally on both sides, inside photos from c19th century on each side. *Fine.* (2)

\$100



1477*

Ladies dress ring, in 9ct gold (tested), set with an oval 0.85ct created emerald and with side settings of tapered baguette diamonds (tot wt 2.65g). *Fine.*

\$80



1478*

Gold necklace, Figaro style necklace in 18ct gold (65.22g; 60cm). *Very fine.*

\$2,400



1479*

Ladies belcher chain necklace, in 9ct gold (tested) and with a T-bar and voided pattern heart pendant in 9ct gold (tested), chain length 48cm (tot wt 27.4g). *Good very fine.*

\$500



1480*

Gold necklaces, one a 9ct gold curb chain with a pearl pendant with small diamond like stone above (tot wt 2.47g; 38mm), the other a 9ct gold long oval curb chain with a pendant of an open heart shape with a white opal claw set in the centre (tot wt 3.21g; 44mm). *Extremely fine.* (2)

\$120



1481*

Gold bracelet, features seven Mexico gold two and a half pesos dated 1945 fitted into seven circular sunburst style holders with plain reverse, each connected by two links, the coins alternating from obverse showing to reverse showing, bracelet tested as 18ct gold and the coins are .900 fine gold (tot wt 44.63g; length 19cm). *Needs cleaning, otherwise good very fine.*

\$1,250



1482*

Curb link bracelet, in yellow gold (9ct, 30.3g, 210x8mm). *Very fine.*

\$500

1483

Bracelet, of tanzanite and white gold (18 carat) (10.74g). *Extremely fine.*

\$300

1484

Gold bracelets, includes twisted curb type with evenly spaced balls all in 9ct gold (0.95g; 18mm); Figaro type in 14ct gold (5.32g; 36mm) (spring clasp needs replacing); Figaro type with figure 8 pattern between in 14ct gold (3.92g; 38mm) (spring clasp needs re- attaching at one end). *Very fine.* (3)

\$280



1485*

Ladies bracelet, in 9ct gold (tested) (10.2g), with voided heart locket clasp attached by a smaller chain which allows to fit bracelet to length required. *Very fine.*

\$180

1486

Silver bracelets, curb link (215mm), snake link (215mm), bangle type (65x50mm inside measurement), fancy link fob chain (220x12mm); silver and gold fob medal (30x25mm), uninscribed; intitial 'L' silver pendant (25x13mm). *Very fine - extremely fine.* (6)

\$100

1487

Bangles, various styles and designs, several marked for silver, one features at four sections the Irish Gladdagh design of a crown above hands around a heart and with a green stone between each of these sections. *Very good - good very fine.* (18)

\$100



1488*

Pendant in yellow gold, (tested as 97% purity) and tourmaline, freeform nugget half-bexel set with a central oval pink tourmaline of estimated weight 2.60 carats and hung from a plain polished bail, length 35mm, total weight 11.7g. *Extremely fine.*

\$1,200



1489*

Crucifix pendant, yellow and white gold, plain front with Christ figure and set with small cubic zirconia, the reverse of textured finish and hung from a tapered bail, stamped 18ct (length 56.1mm, width 35.2mm, total weight 16.1g). *Extremely fine.*

\$650



1490*

Chinese dragon pendant, in gold (stamped 835 but tests as at least 18ct; 5.26g), also a thin necklace (45mm), with Chinese markings (tested as at least 18ct; 3.44g). *In a small silk purse acquired with original purchase marked for Everon at Penang, Malaysia, the necklace needs a repair to the clasp area, otherwise extremely fine.* (2)

\$350



1491*

A Witch pendant, yellow gold stone set, articulated pendant modelled as a witch on a flying broomstick, grain set with small cubic zirconias, rubies and sapphires (length 34.6mm x ht 25mm, weight 10.9g). *Extremely fine.*

\$250



1492*

Gold charm/pendant, articulated pendant modelled as a clown and set with small brilliant garnets, emeralds and sapphires, yellow gold, unmarked, tested as 9ct gold (length 24mm, total weight 5.8g). *Has been repaired at top of clown's hat, otherwise good very fine.*

\$150



1493*

Cross pendant, in gold (14ct, 1.7g, 23x13mm), set with twelve garnets. *Extremely fine.*

\$100



1494*

Cameo brooch, gold mounted helmet shell, depicting a classical male figure set within a scrolled surround with lock of hair insert to reverse, yellow gold, unmarked, testing as 16ct and 18ct, total weight 25.8g. *With replacement pin and safety chain, very fine.*

\$1,200



1495*

Antique brooch, c1910, Australia/Kookaburra, in gold (9ct, 3.2g, 53x20mm) with seed pearls and ruby eye, pin-back. *Extremely fine, in Dunklings Melbourne original fitted box.*

\$200



1496*

Serpent bar brooch, in gold (9ct, 3.8g, 30x15mm), set with an old cut diamond, pin-back. *Extremely fine.*

\$150



1497*

Brooch, green stones set in yellow gold (14ct, 6.7g, 40x40mm), pin-back. *Extremely fine.*

\$150

1498

Bar brooch, in 18ct gold with small turquoise in centre (tot wt 3.66g); dress ring in 18ct gold plate (this worn off) featuring split shank at top with a pearl set on each shank and a pearl set into a centrepiece (tot wt 7.12g); one pearl earring, for pierced ear; gold plated elephant charm, missing loop at top; gold coloured tie bars (2, one long (47mm) by Swank and one short (35mm) by Shields). *Fine - extremely fine.* (6)

\$130



1499*

Spider on web brooch, in gold (probably 9ct, 1.5g, drop 20x20mm), bar with pin-back suspension. *Very fine.*

\$100



1500*

Sydney Harbour Bridge brooch, c1930s, in sterling silver, hand painted and enamelled (oval 33x20.5mm), pin back, marked on reverse, 'Sterling/Silver/Pall Mall' and Made in Germany. *Extremely fine.*

\$100

1501

Kookaburra brooch, in 9ct plated silver (oval 26x34mm), features inscribed facing kookaburras sitting on a branch; Scottish thistle emblem in enamel on a brass tie bar; T.S.S.Athenia lapel brooch, gold plated (22x23mm), leaf shaped and inscribed with leaf design and in the centre, 'T.S.S.Athenia'; shield shaped slide emblem in gold plate (22x23.5mm), with inscribed fern at each top side and the initials, 'GUC'; Peru half sol, 1969, with pierced hole at top and fitted to a brooch suspender; cufflink in oxidised bronze (26mm), featuring ancient Greek god Zeus sitting with goddess standing beside him; vintage leather ladies' purse (12x6cm), features four inside compartments and two outside, with gold blocked initials 'I.C.' on opening flap; stainless steel belt clip (31x52mm) with swing out small blade on one side and on the other a nail file, on the face of the clip is affixed the seal of the Vice President Of The United States. *Very good - fine.* (8)

\$70

The T.S.S.Athenia shipping liner was torpedoed without warning by a German U-boat on 3 September 1939, the first day that Great Britain declared war on Germany. This sinking was not within the international laws governing the conduct of war at sea as laid down by the Hague Convention at that time. The U-boat commander Lieutenant Fritz-Julius Lemp broke all rules of warfare and disobeyed his orders. He left without offering any assistance to the survivors and the whole incident was denied by German authorities.



1502*

Ladies diamond earrings, in 18ct gold (tot wt 8.74g), drop earrings suitable for pierced ears, each features small ball with small centre diamond atop a circular group of six balls surrounding a central diamond of approx 30 pts. *In a case by Attilio Signoretto, Trieste, extremely fine.*

\$300

1503

Gold earrings, one pair in 14ct gold (2.27g) features crescent shape; the other pair in 14ct gold (3.47g) feature overlaid circles with four semi-circular bands across; both pairs for pierced ears. *Very fine - extremely fine.* (2 pairs)

\$160



1504*

Cufflink pair, in white gold (18ct, tot wt 9.5g, heads 13x13mm), each set with four central sapphires surrounded by twenty four diamonds. *Extremely fine in leatherette box.*

\$300



1505*

Tie pins, first as stick-pin in gold (probably 18ct, 2.2g, head 10mm), central ruby or garnet surrounded by eight diamonds; second but stud, as last in gold (18ct, 2.6g, head 10mm), screw down button back. *Extremely fine.* (2)

\$500



1506*

Stick-pin, c1910, horseshoe shape in gold (probably 9ct, 6.0g, head 18x17mm), set with central opal, flanked by eight small diamonds. *Very fine, with fitted case.*

\$250

1507

Gold jewellery, mostly damaged or with bits missing, includes 22ct (5.23g); 18ct (yellow gold 0.62g, two white gold rings missing stones 6.45g); 14ct (3.61g); 9ct (10.62g, includes large wedding ring); also English hallmarked silver ingot pendants (2, one 32.33g, the other 15.34g). *Poor - very fine.* (14)

\$800

1508

Gold items, including rings (7), fob medal (silver and gold) on chain, various pieces of scrap gold; also, loose rubies or garnets (tiny) (8) and diamonds (small) (4), total weight of gold (53.5g, 9ct and 10ct). *Fair - extremely fine.* (lot)

\$800

1509

Fob chains, in rose gold (9ct, 38.6g, 47cm length) (9ct, 4.3g, 43cm length). *Fine.* (2)

\$400

1510

Ladies mixed jewellery, all stamped or tested as 18ct gold (tot wt 17.41g), includes set of patterned hoop earrings for pierced ears; pearl ring with 12 small diamonds around; wedding style rings (3); Gucci chain bracelet (18.5cm). *Fine - good very fine.* (6)

\$650

1511

Ladies mixed jewellery, stamped or tested as 9ct gold (tot wt 34.84g), noted damaged necklace and bracelet; wedding rings (2); pair of hollow hoop earrings for pierced ears; dark blue sapphire dress ring; citrine dress ring (needs cleaning); gold fingernail; hollow core bangles (2). *Poor - very fine.* (10)

\$650

1512

Gold jewellery, ring, (15ct, 5.9g); gold chain, double strand, oval link (9ct, 10.5g, 44cm); mourning brooch, possibly Pinchbeck or gold (2.1g, 19x12mm); Kelatan silver pendant (green stone, 35x28mm) with silver chain (60cm). *Very fine.* (4)

\$300



part

1513*

Gold jewellery, features a pendant of stylised initials 'GR' with the R starting halfway down the G, in 14ct gold (2.08g); Go In Peace/Return In Peace in English and Jewish text, gold medal with dove of peace on obverse and a group of hearts above a rising sun on the reverse, claw set into tear shaped pendant, all in 14ct gold (2.43g); pendant of a bird outline set onto a triangular plate, the bird with a diamond eye, in 9ct gold (1.04g); scarab shaped charm in 9ct gold (0.69g); one pearl earring with diamond-like stone above, in 9ct gold (tot wt 0.95g), for pierced ear. *Very fine - extremely fine.* (5)

\$160

1514

Ladies jewellery, includes dress ring with red sapphires (4) and diamond like stones (6) in 18ct gold (tested) (2.45g); set of large gold-like hoop earrings for pierced ears; gold-like flower shaped brooch; silvered and gold coloured necklace (43cm). *Very fine.* (4)

\$90



part

1515*

Jewellery, mostly in silver, includes necklaces (2), necklaces with pendants (4), loose pendants (9, including one large 40mm St Christopher medal in silver with an aeroplane and a car on the reverse) pendants or charms, Irish Claddagh ring in silver, a pair of cufflinks, bracelets (3, one with mouse charm), and coins bracelets (2, one featuring English silver coins (11) all pre 1910, and one featuring world coins (40+), some in silver and all coins nickel plated, and an Irish Celtic knot brooch. *Very good - good very fine.* (23)

\$150

1516

Jewellery, some pieces in silver but mostly costume jewellery, includes necklaces, bracelets (four of these with charms or decorative attachments with one of these by '1928 Jewelry Company' in California USA), rings, large cross pendant (missing centre stone), earrings, a few pieces missing clip rings or jump rings and one missing nylon thread connecting all the large bars in a bracelet. *Mostly fine - good very fine.* (25 + 13 loose bars of bracelet)

\$70



part

1517*

Various jewellery items, in silver or silver-like, features several pendants, earrings, mostly with only one earring, a chain and pendant, a bracelet with charm, several rings, a few missing stone, noted one with a hinged-top to reveal a photo inside, also a bar brooch inscribed, 'Katherine'. *Mostly fine - good very fine.* (approx 50)

\$60

1518

Costume and other jewellery, non precious metal, including chains with pendants, brooches, quartz ladies watches and a St Christopher statuette in bronze. *Fine - very fine.* (20)

\$100

1519

Jewellery box, 19th century, Victorian walnut veneered, with fitted interior lined with blue velvet, the top compartment containing eleven glass bottle sand jars, six with silver plated lids, the smaller drawer below released by a spring loaded button, mother of pearl escutcheon to the lid. *Nearly very fine with some repairs, lock missing.*

\$200



1520*

Vesta case, in gold (9ct, 23.3g, 52x40mm), chased design, by CS*FS (Cornelius Desormeaux Saunders & James Francis Hollings (Frank) Shepherd), hallmark for Birmingham 1905, side ring suspension. *Firm hinge, very fine.*

\$600



1521*

Silver tea and coffee set, with deep tray, includes tea and coffee pots, cream/milk pot and sugar bowl, all but the cream/milk pot with domed lids, handles with a rope pattern, all marked on base '14UD GM 800' (Giovanni Macchia of Udine in Italy), also deep serving tray with legs at each corner and with fold-over leaf pattern handles at each end and smaller decorative pattern leaf at each side of the mid-point (total wt approx 2.6kg). *Some scuffing to tray, otherwise very fine.*

\$1,200

1522

Serving spoons, in silver, hallmarked, George Elder, Glasgow (2), Joseph & Horace Savory, London (2), total weight 615g. *Very fine.* (5)

\$350

1523

Silverware, 1900s-1940s, various items of tableware and bedroom dressing table items including hairbrushes, comb holder, spoons, condiment bowls, pepper shakers, pill box, knives and others, many damaged, some EPNS but the majority in sterling silver (approx 0.5kg), also noted one small silver mug inscribed at the top on one side, 'Noel. Xmas 1912' and on the other side, 'from L.G.H. & J.C.', and similarly at the bottom, 'James Xmas 1969' and 'from Nan & Noel', and another goblet (approx 15cm high) in silver hallmarked for 1946 and at the top is inscribed a Jewish Menorah symbol, below this is a Jewish inscription and inscribed below this in 4-lines, 'Presented/For Efficiency/By/Sam and Rose Markman'. *Poor - very fine.* (lot)

\$300

1524

Russian silverware, includes tea glass holder with high lid, engraved on one side with a floral pattern and engraved on both sides with text ending '5/18 June 1927'; sugar bowl with swing handle and engraved floral pattern around side; cake server; tea spoon; two medium size spoons; large serving spoon; two pairs of tongs, not matching; tea strainer; a few not hallmarked but many with the Kokoshnik mark for .875 silver. *Very fine.* (10)

\$170



part

1525*

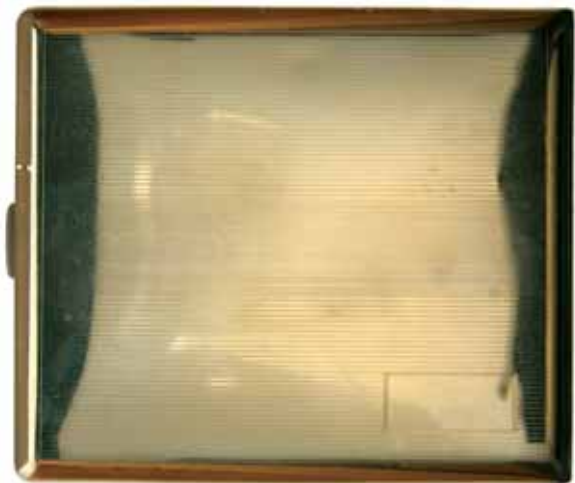
Norway, set of six 0.830 fine silver spoons, c 1905, hallmarked A.S.H.830S (Adlak Sorenson Hodne), the spoon ladles feature a standing lion wearing a crown and holding an halberd axe and with a palm tree in the background, the handle and end of the spoon are extensively decorated and the plain centre of the end piece is identically engraved on all spoons, 'A.W./M.W.'. *Good very fine.* (6)

\$100

1526

Tableware, includes single hallmarked small spoons of Queen Victoria era, a set of six teaspoons hallmarked for Birmingham 1941 in hinged lid case, another set of six teaspoons in EPNS in case but this with loose lid, various other spoons, knives and forks in EPNS, noted four desirable large serving spoons (2), ladle and fork, all elaborately decorated with fruit designs. *Fine - good very fine.* (13 + 2 sets of 6)

\$100



1527*

Cigarette case, c1930s, in gold (9ct, 112.0g, 95x82x8mm), machine turned case, no maker, probably local manufacture. *Very fine.*

\$1,750



1528*
Cigarette case, c1930s, silver and enamel (120g, 85x70mm), Continental make (.935 silver). *Damage to enamelling in two places, otherwise very fine.*

\$150

1529
Cigarette case, silver, with machine turned pattern, hallmarked for Birmingham 1922 by Martin Hall & Co Ltd, and stamped by The Northern Goldsmiths, Newcastle upon Tyne, on the lid in the centre is a plain circular section which has inscribed the calligraphy capital letter, 'H', weight 125g. *Good very fine.*

\$70



1530*
Cigarette lighter, by Alfred Dunhill (London), in gold (9ct, tot wt 54.5g, 47x40x15mm), machine turned case, hallmark for London 1935. *In original unused condition and rare.*

\$1,000

1531
Table cigarette lighters, Wedgewood, Minton, Ronson, KW (Karl Wieden, Germany); also, hand held lighters, Cartier, bottom marked Cartier Paris 742715 Swiss Made (70x25mm) and Dunhill, diamond cut design (63x23mm), bottom marked Made in Switzerland, Dunhill, US.RE24153 Patented; silver matchbox holders (2) one plain (c1920s) and another machine turned, engraved date 14.4.67. *Very fine - extremely fine.* (8)

\$300



part

1532*
Cigarette lighters, includes Dunhill gas type with gold plated machine tuned case (65cm high), name of maker on bottom and on the underside of the lid, purchased new in 1971 and with original case, instruction booklet and purchase docket; also Christian Dior gas type, the gold plated case (71cm) with vertical reeded design and at the lid point are four horizontal ribs, name of maker on bottom and inside of the lid are the initials, C.D'; also tie bar by Toyomoto made of sterling silver and with cultured pearl at one end, in original Toyomoto case. *The first good very fine, the second with scuffing to lid top and some marks on case, otherwise fine, the last uncirculated.* (3)

\$220

1533
Souvenir and commemorative spoons, in silver plate, noted issues for The Snowy Mountains, Canberra, Cairns, Bundanoon, Sydney, Port Macquarie, Coffs Harbour, another unnamed but with inset Australian opals, also Grand Canaries, Panama, New Zealand, St Catherines, Singapore, Tahiti, and Marriage of Charles and Diana, QEII Silver Jubilee 1977; commemorative dinner knives (5) for QEII Silver Jubilee 1977, two missing commemorative plaque and one with a loose plaque; tea scoop with clock dial at 4 o'clock and with a teapot for a handle and commemorative plaque for Coral Gardens, Mandalay. *Several in boxes or packs of issue, the last fine the rest mostly uncirculated.* (22)

\$60



1534*
China, Qing Dynasty, blue and white dish, Kangxi period, depicting a scholars in a garden scene, 145mm diameter, signed at base. *Extremely fine with no cracks.*

\$500



1536*
China, bronze Buddha, 20th century, bare headed in polychrome robes, seated on a high stool with a snake below, 240mm high, 150mm wide. *Very fine with minimal rubbing.*

\$300



1535*
China, late 19th - early 20th century, gilt bronze Sino Tibetan Bodhisattva, seated on a double lotus throne, adorned with an elaborate headdress, floral disk earrings and necklace, Chinese script atop the lotus throne, the copper base engraved with a vajra bolt symbol stamp, (270mm high x 200mm wide). *Extremely fine with minimal gilding loss, rare.*

\$2,000



1537*
China, miniature rice harvesting basket in 0.900 silver (36mm diameter), late 1800s, intricately patterned and with small carrying handles at the sides, base with Chinese hallmark; Israel, souvenir spoon in 0.800 fine silver, c1916-18 period, perhaps a WWI souvenir, features a spoon ladle with a coloured scene of the Via Dolorosa (the street walked by Jesus carrying the cross on the way to his crucifixion), at the end of the handle is a Jerusalem cross with enamel features on both sides. *Very fine. (2)*

\$100



1538*

China, attributed to the Song Dynasty, 'yingqing' wine pot, vase shaped body with flared rim, curved spout and handle, exterior glazed in a cream and grey mottled tone, 155mm high, 90mm wide. *Some cracks and chips, otherwise very fine and rare.*

\$1,500



1539*

China, early 20th century, blue and white enameled metal snuff bottle, of circular form, decorated with a scene of a mother and child in a rural setting, stopper intact, (75mm high). *Extremely fine.*

\$500



1540*

China, mid 20th century, 'yixing' terracotta redware teapot, of squat form with six inscribed sections to the body, the lid topped with a stylised stem, 140mm wide, 70mm high, signed to base and lid. *Extremely fine.*

\$150



1541*

China, mid 20th century, stoneware teapot in the form of a tree log, the spout and handle formed as branches, decorated with small animals, flowers and a brown/tan colouring, 155mm wide, 75mm high, signed at base and lid. *Extremely fine.*

\$150



1542*

Ethiopia, Coptic cross, 19th century, in crude silver (6x8.4cm), with suspension ring. *Good very fine.*

\$60

Ex Dr Barrie Towers Collection.

1543

Egypt, Late Period, (c.672-332 B.C.), glazed faience amulet of Anubis, god of the dead, seated with arms beside, (height 30mm). *Damaged and repaired, very fine.*

\$50

From an old Sydney collection.

1544

Greek and Roman gold earring fragments, (c.3rd century B.C. - 2nd century A.D.), of twisted gold wire form with applied circular and beaded designs, (4.15g total weight). *Damage from burial, nearly very fine and rare.* (3)

\$200

From an old Sydney collection with collector's tickets.



1545*

Roman, (1st century B.C. - 1st century A.D.), gold earrings, first pair of twisted gold wire design with green glass bead attached, the other single earring of gold wire with green glass drop bead, (18mm - 30mm long, 3.48 g total weight). *Attractive style, very fine and scarce.* (3)

\$200

From an old Sydney collection with tickets.



1546*

Greece, Hellenistic period, c.2nd century B.C., bronze finger ring, the plain band terminating with a broad bezel engraved with an image of Hercules walking left carrying club and lion skin, (diameter 22mm). *Attractively toned, extremely fine, complete and rare.*

\$300

From an old Sydney collection with ticket.

1547

Roman, silver fibula, (c.1st - 2nd century A.D.), of trumpet form with finely curved pin and knob terminal, length 56mm. *Light green patina, very fine, intact and scarce in this condition.*

\$100

From an old Sydney collection with collector's description.



1548*

Roman, bronze bust applique, (c.1st-2nd century A.D.), cast discoid applique modelled as a female, possibly Diana, with elaborately formed hair and horizontal belt across chest, (60mm long, weight 55.9 g). *Attractively toned, very fine and scarce.*

\$300

From an old Sydney collection.



1549*

Roman, bronze figure of Mercury, (c.1st-2nd century A.D.), depicted standing naked with a long cloak over his shoulder and winged cap, holding a purse in his right hand, (height 65mm). *Deeply toned, missing feet, arm repaired, otherwise very fine and scarce.*

\$300

From an old Sydney collection with collector's description.



1550*

Roman, bronze patera handle, (c.1st-2nd century A.D.), of fluted form terminating in a female head with decorated hairstyle, (length 135mm, weight 190 g). *Deep green toning, some earthen inclusions, very fine and rare.*

\$300

From an old Sydney collection with collector's ticket.



1551*

Roman, bronze statuette fragment of an arm, (c.1st-2nd century A.D.), finely moulded as an extended arm with fingers projecting, (length 70mm, weight 47.9 g). *Attractive green toning, some damage to fingers, otherwise very fine and rare.*

\$100

From an old Sydney collection with collector's description.



1552*

Roman, bronze seal boxes, (c.2nd-3rd century A.D.), of circular form with hinged lids, decorated with concentric circles, (20mm long). *Toned, very fine.* (2)

\$100

From an old Sydney collection with collector's tickets.

These seal boxes contained a wax seal and were associated with the Roman military. They were sewn onto fabric or leather containers that held documents.



1553*

Roman, 2nd-3rd century A.D., gold earrings, of round shield form with gold wire hoops, central design terminating in a circular receptacle for a stone setting (now missing), (20mm wide, 3.95 g total weight). *Very fine and scarce.* (2)

\$150

From an old Sydney collection with ticket.

1554

Roman, bronze fibula, (c.2nd-4th century A.D.), of shield form terminating in four points, decorated with central triangular inlays, (42mm x 34mm). *Toned, very fine and a scarce shape.*

\$100

From an old Sydney collection.

1555

Wine goblets, set of eight in silver plate by Valero of Spain, includes four (13cm high) and four (10.8cm high), with matching designs. *Need cleaning and polishing, otherwise very fine with no dents.* (8)

\$50

1556

Vintage baby's christening gift set, in EPNS, features mug and engraved around the middle is a stork delivering a baby, a baby sack at each end of a rod with a candle in the middle, and a clock with numbers but no hands (indicating that after the baby arrives there is no sleep for the parents), also an egg cup with a feeding spoon, all in original satin lined velvet covered hinged-lid case. *Some loss of material to outside of case, EPNS needs polishing, otherwise very fine.*

\$50

1557

Designer pens, Tiffany & Co, ballpoint pen in sterling silver, in original Tiffany & Co pouch with box; Cartier, silvered ballpoint pen, numbered 139138. *Extremely fine; fine.* (2)

\$100



1558*

Vintage pocket knives, all with 9ct gold side panels, the first by L&S (Levi & Salaman, Birmingham) (70x10x7mm), hallmark for Birmingham 1900; another, machine turned, by H.Bros (Hardy Bros, London) (78x10mm), hallmark for London 1904 [illustrated]; another, by S.M. & Co (S.Mordan & Co) (72x10mm), hallmark for London 1900. *The first fine, others good very fine.* (3)

\$500

Please note: No mail out for this lot, collection only from the Sydney Office.



1559*
Japanese sumo wrestler statue, in ivory (15.5cm high), features a standing and facing sumo wrestler wearing an ornamental apron (kesho-mawashi), and on the back of the loincloth (mawashi) is attached a Japanese character. *Good very fine.*

\$500



1560*
Bronze statue of Benito Mussolini, wearing military uniform and with right arm raised, seated on a black marble base (20.5x9.5cm), the statue stands approx 23cm high. *Very fine.*

\$100



part

1561*

Australian Aviation memorabilia and trophies, includes trophies as follows, 1) small silvered cup inscribed on side, 'Aero Club of N.S.W./Path Finding Compt 1930. B' Grade/Won by F. McKeachnie (sic)'; 2) silvered cup on plastic base, enamelled badge of The Royal Aero Club of NSW affixed to one side and below is inscribed, 'Treasure Hunt/No 2 Grade 22.3.31/Won by F.McKeachnie (sic)'; 3) EPNS beer mug inscribed on one side, 'Aero Club of NSW/No 2 Grade/Race 75 Miles/Won By/F.McKeahnie/19.9'31'; 4) small silvered cup on plastic base, enamelled badge of The Royal Aero Club of NSW affixed to one side and below is inscribed, 'No 2 Grade/Sealed Hcap. Race/50 Miles/F.McKeahnie/3rd Bombing Competition/5.10.31' (illustrated); 5) silvered cup on timber base, one side of cup inscribed, 'K.L.G. Cup/1931/Won by/F.McKeahnie/Highest Aggregate Competition Score/No 2 Grade Pilots'; 6) chalice style silvered cup on plastic base, one side of cup inscribed, 'Aero Club of N.S.W./Bombing Compt 12.6.32/No 2.Grade/2nd. F.McKeahnie'; 7) silvered cup on plastic base, underneath is sticker for W.Kerr, one side of cup inscribed, 'The Royal Aero Club of NSW/Inter Club Handicap/In Conjunction With/Australia's/150th Anniversary Celebrations/feb. 26th 1938/3rd'; also Aircraft clock with silver dial and black Arabic numerals, by S.Smith & Sons (M.A.) Ltd, Cricklewood Works, London, with their ticket affixed inside protector, clock face and works on a hinge and fold out of protector to reveal wind key on back, four screw holes for mounting to plane cluster; aviator's cap and goggles with large circular leather case, circa 1925-1940, cap and goggles made in leather, goggles with metal frame and tinted glass and elastic with sliding clip for adjustment when worn, cap with chin strap, radio input metal tubes in ear covers; radio input pipe; pennant featuring GA/C (probably an aero club) and anchor on a white background with red cross and yellow border, made of linen by Stonewall (flag belonged to F.McKeahnie); Yoke, made in steel (64.5cm long), black plastic handle, all mounting points intact. *A few trophies with dents, goggle's leather deteriorated, otherwise very good - very fine.* (14)

\$300

Ex Noble Numismatics Sale 113 (lot 863) part.

See notes following page.

Notes for lot 1561 previous page

Frank McKeahnie was the son of a prominent, pioneering pastoralist from 'Aberfoyle' at Yarra near Goulburn, NSW. After leaving school he was apprenticed to the engineering trade at Goulburn. On 1 June 1906 his wife Ivy, aged 25, died of typhoid. In that same year he purchased Sydney Machine Co based at Botany Road, Waterloo, not far from Mascot Aerodrome, as it was called at that time. Frank was a qualified pilot with the NSW Section of the Australian Aero Club and it was reported in 1930 that his father, George, had a nice surprise when Frank, flying on his way to Canberra, landed in a paddock at Yarra to visit him. Frank knew the surrounding area well as he grew up and camped on the Canberra Plains on many occasions when droving cattle, little knowing that one day the Federal capital would be built on that site.

On another occasion in June 1931, while flying over Yarra, Frank dropped a letter by parachute to a local resident to advise him that his father, George McKeahnie, was undergoing medical treatment in Sydney. Scrawled across the envelope were the words, 'Gee, it's cold up here--a cup of coffee would go good.' This was the first letter delivered to Yarra by medium of an aeroplane and the local resident stated that he was going to preserve the envelope, letter and silk parachute as a souvenir.

In January 1932 Frank McKeahnie was elected as a member of the committee of the Australian Aero Club (NSW). In the same year he presented an Essex truck, used for towing aeroplanes about the 'drome, to the Aero Club (NSW). He also was president of the air tourney committee for the Lady of the Air Tourney held at Hargrave Park and in that capacity he presented the trophy to the winner, Miss Valmal Jenkins. Hargrave Park at Liverpool, NSW was an area of about 70 acres acquired by the Royal Aero Club and they created an airfield there which opened in 1930. It was closed in about 1945.

In November 1934 Frank McKeahnie once again was the Aero Club's representative when three aircraft, three pilots and an instructor were sent from Sydney to Bombala to assist in celebrations to greet the King's son, HRH Prince Henry, when he visited the area. In 1935 he was elected Vice-Chairman of the Aero Club.

Vendor advises that Frank McKeahnie piloted one of the planes that flew over the Sydney Harbour Bridge on its official opening day but this has not been confirmed.

Please note: No mail out for this lot, collection only from the Sydney Office.

1562

Model cars and figurines, noted four different metal cars, a metal sentry post, various figurines including of soldiers, Viking warriors, animals, firemen, noted a Mickey's Fire Brigade (Mickey Mouse) figure in fine pewter, made in 1980s, also a field gun with wheels, and old fire wagon in a bottle and many more, mostly in metal. *Poor - very fine.* (approx 55)

\$100

1563

Australia, souvenir matchbox made of timber from the keelson of convict transport ship George III wrecked in D'Entrecasteaux Channel close to the mouth of the Derwent River in Tasmania in 1835, together with printed information sheet on the details of the George III and the wreck. *Very fine.*

\$100

Made from part of the ship's keelson which runs the length of the ship and is used to fasten timbers or plates of the floor to the keel. One part of the keelson is built into the Tower and is the main support of the flagstaff at Government House, Hobart and another part was used to make mementoes such as the one above.

1564

Mary Rose paperweight, a rectangular lucite block (5.9x13.5x2.9cm) and sealed inside is a piece of timber from Henry VIII's flagship, Mary Rose, which was sunk in action against the French off Portsmouth in 1545, details recorded on top and certified as genuine on the base. *In box of issue, uncirculated.*

\$50



1565*

Japanese tsuba, oval in shape (W77xH78.5xD5mm), cast in iron, voided areas around the central tang section and the whole area overlaid with a jumbled pattern of short sticks in bronze and copper. *Fine.*

\$100



part

1566*

Rifle peep sights, by Central and another by Rawson, together with three bracket mounts, two Central No 4, and another Central but unnumbered, also some odd bits; bullet reloading timber block (8.8x14.6x4.3cm) with hand carved design on three sides and on an opposing side is holed for 23 cartridges; also a book titled, *The Target Rifle In Australia 1860-1900*, by J.E. Corcoran, 1975, marked 854 of 1,000 copies issued, signed by the author, John E. Corcoran in June 1979, 223pp, with hardcover and dust jacket, includes b&w photos and illustrations throughout. *The book with foxing on front and back cover pages, otherwise good very fine, the rest very fine.* (7 + odds)

\$250

1567

Flintlock rifle accessories, includes brass powder flask, (approx 19cm long), bulbous shape with lined pattern and decorative pattern at top end, adjustable measurement collar marked, 'Drams' with settings for 2 3/4, 2 1/2, 2 1/4, with dents and solder repair at side joint; Eley of London percussion cap tin with approx 65 anticorrosive percussion caps; gun powder tin (approx 11cm high + 3cm high nozzle), with original lid, label for Chilworth Sporting Gunpowder, most black paint missing from tin and label badly deteriorated; leather shoulder shot carrier missing shot dispenser at end and leather strap has come away at same end. *Good - fine.* (4)

\$100

No mail out for this lot, collection only from the Sydney Office.



1570*

Porcelain plate featuring famous NSW landmarks, c1880-90s, an octagonal gold edged plate (23.8cm), includes coloured images of the Post Office (GPO in Martin Place), Wynyard Square (now called Wynyard Park), The Statue of Captain Cook (in Hyde Park), The Town Hall, and Macquarie Street (shows Sydney Hospital and Parliament House), at the top centre there are two crossed NSW flags and at the bottom centre is the NSW Coat-of-Arms, these are all connected by a coiled rope which runs around the outside of the main images, on the back is marked, 'Designed By/G.Hodgson.Junr & Co/Rd No 29565/Summer Hill'; also an oval serviette holder in polished brass and affixed to one side is the City of Sydney N.S.W. Coat-of-Arms, pre 1900. *Very fine.* (2)

\$200

Note that Wynyard Square is surrounded by a fence as when it was first dedicated in 1875 its use was restricted to local residents. In 1887 it was dedicated as a public park and the fencing was later removed.

1571

Souvenir ceramic cups (2), featuring image of Changi Chapel at Duntroon and the words, "Changi Chapel"/Dedication 15th Aug. 1988/Royal Military College/Duntroon ACT; 1987 calendar featuring large colour image of Sydney Harbour and the Bridge; book titled, '(352087 A/c Ross) T.E.Lawrence/The Mint', 1978 reprint, soft cover, 232pp, together with bookmark for Lawrence of Arabia and the Light Horse; DVD for Behind the Lines by John Schumann and the Vagabond Crew, features 16 war related songs; various postcards with many featuring Middle Eastern locations or themes, also a few reproduction issues for the construction of the Sydney Harbour Bridge; North Coast Run, Men and Ships of the N.S.W. North Coast, second edition, soft cover, 174pp, with b&w photos; WWII era newspapers relating to Japanese surrender; several copies of the magazine The Log of Mystic Seaport; photo albums containing Cricket collector cards; other photo albums featuring photos for Australia and England around WWI era; copies of Life magazine during period 1966-1969 featuring the Vietnam War. *Poor - very fine.* (100s)

\$120



1568*

Eley Bros Ld percussion caps, 19th century, full tin of 100 anticorrosive percussion caps warranted not to miss (sic) fire or fly to pieces, top label intact and label on base of tin marked, '100 No.10 Caps'. *Extremely fine.*

\$50

No mail out for this lot, collection only from the Sydney Office.



part

1569*

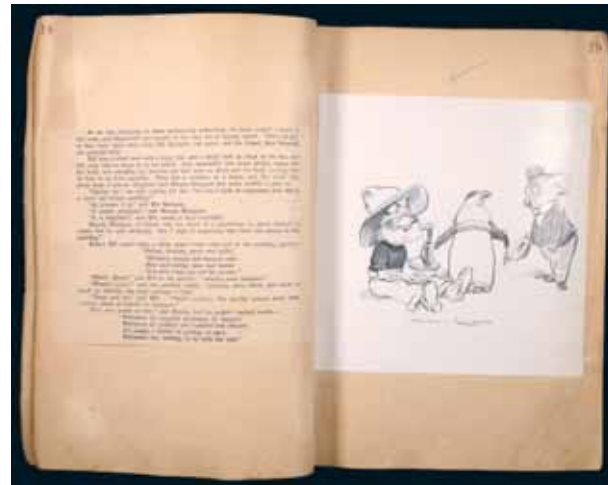
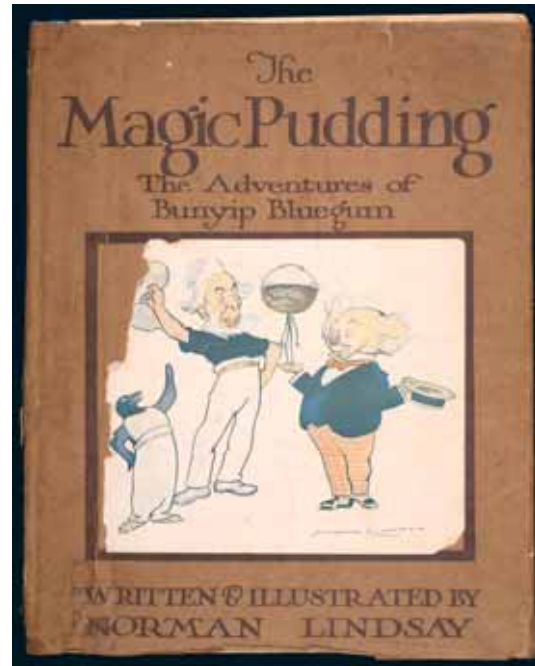
Antique firearm shot and powder dispenser, one by G.& J.W.Hawksley, the other is a smaller model with impressed number, '410' on base, both in brass with wooden handles. *The first turning mechanism jammed, otherwise fine - very fine.* (2)

\$50

1572

Playing cards, various single sets (7), noted USA, Congress Playing cards with cel-u-tone finish (unopened), also Eroticartes; double sets for Las Vegas; Patience double sets (2), one with rule book; Canasta double set with rules; miniature set in leather container; a Royal Netherlands Steamship Company bound folder (10.5x22.3cm) and inside a near complete book of unused Bridge scoresheets with fitted pencil; six poker dice; large case (approx 13x40cm) of gambling chips featuring ten different coloured rows of round plastic chips (each 33mm); small leather and chrome plated nickel book stand containing three miniature dictionaries of the 'Midget Series' and titled, 'English - French', 'English - Spanish' (name on inside is Patricia Farrington), and 'English - German'. *Fine - uncirculated.* (23)

\$100



1573*

Spoofing caricature of WWII Japanese officer, Nutty Mads titled Most Hon. Officer Saki/Sake, 1960s, by Marx of Great Britain, made of plastic and painted (approx 13cm high). *Some loss of paint but highly sought after, fine.*

\$200

With research.

1574

Revd John Dunmore Lang D.D.A.M., engraved image by H.S.Sadd from a b&w photograph by J.T.Gorus as published in November 1873 by J.T.Gorus, under perspex in a timber frame (32x40mm). *The perspex with a few scratches near lower left edge, the white border of the photo is affected by age tinting or foxing, the image is unaffected and extremely fine, overall fine - extremely fine.*

\$70



lot 1575

John Dunmore Lang was a Scottish-born Australian Presbyterian minister and was the first prominent advocate for an independent Australian nation. He was an outspoken believer in many causes, a writer, politician and activist and was also the Minister of the Scots Church Sydney for upwards of fifty years. He died in 1878 and his funeral was one of the largest attended in the Australian colonies at that time with nearly 70,000 people lining the funeral procession.

1575*

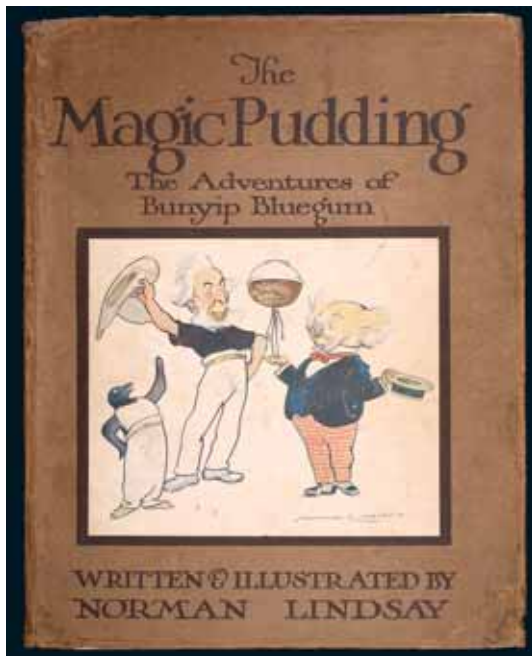
Lindsay, Norman, Original Publisher's layout for the first edition of *The Magic Pudding, Being the Adventures of Bunyip Bluegum and his friends Bill Barnacle & Sam Sawnoff*, Sydney, Angus & Robertson, 1918, containing hand stamped numbered pages with cut and pasted text and illustrations, stitched and partially bound spine; together with a copy of the *The Magic Pudding*, Sydney, Angus & Robertson, 1918, First edition, 4to, with cream printed boards and pictorial dustjacket, half-title with illustration, coloured pictorial title page, followed by black and white title page with a vignette. *Nearly very fine, the publisher's layout an extremely important piece of Magic Pudding history, unique.* (2)

\$4,000

First part Ex Lawsons Auctioneers, Sale 3726, lot 307. 26 October 2004.

This original publisher's layout was acquired by a Mr Perce Loudon in 1918. He was a builder who had been working on Lindsay's home in Chapman Parade, Faulconbridge. He saw the layout languishing in the garbage nearby and asked Norman Lindsay if he could keep it. Lindsay agreed and it was eventually passed down through Loudon's family. In the mid 1960's a family member appeared at the house in Faulconbridge to show Norman Lindsay the layout. He leafed through the pages and declared "It's only fit for the bloody bin where it should have stayed."

The Publisher's Layout was lent to the Norman Lindsay Gallery where it was on display for a number of years.



1576*

Lindsay, Norman., *The Magic Pudding, Being the Adventures of Bunyip Bluegum and his friends Bill Barnacle & Sam Sawnoff*, Sydney, Angus & Robertson, 1918, First edition, first issue, 4to, with cream printed boards and pictorial dustjacket, with green Angus & Robertson patterned end papers, half-title with illustration, coloured pictorial title page, followed by black and white title page with a vignette. *Very fine with numerous illustrations throughout by the author, rare.*

\$2,000

AUSTRALIAN GOLD COINS

SYDNEY MINT SOVEREIGNS



1577*

Queen Victoria, second type, 1859. *Obverse rim bruise at 6 o'clock, otherwise nearly very fine.*

\$500

Ex B.W.Ahearn Collection.



1578*

Queen Victoria, second type, 1859. *Surface marks, otherwise nearly very fine.*

\$450

Ex B.W.Ahearn Collection.



1579*

Queen Victoria, second type, 1861. *Nearly very fine.*

\$650

Ex B.W.Ahearn Collection.



1580*

Queen Victoria, second type, 1861. *Nearly very fine.*

\$600

Ex B.W.Ahearn Collection.



1581*

Queen Victoria, second type, 1861. *Nearly very fine.*

\$500

Ex B.W.Ahearn Collection.



1582*
Queen Victoria, second type, 1861. *Good fine/nearly very fine.*

\$450

Ex B.W.Ahearn Collection.



1587*
Queen Victoria, second type, 1866. *Frosty mint bloom, reverse rim nick or damage at 4 o'clock, otherwise extremely fine/good extremely fine.*

\$650

Ex B.W.Ahearn Collection.



1583*
Queen Victoria, second type, 1862. *Obverse brushed, good fine/very fine.*

\$500

Ex B.W.Ahearn Collection.



1588*
Queen Victoria, second type, 1866. *Good very fine.*

\$650

Ex B.W.Ahearn Collection.



1584*
Queen Victoria, second type, 1863. *Very fine.*

\$700

Ex B.W.Ahearn Collection.



1589*
Queen Victoria, second type, 1866. *Good very fine.*

\$600

Ex B.W.Ahearn Collection.



1585*
Queen Victoria, second type, 1865. *Surface marks, otherwise nearly very fine/very fine.*

\$500

Ex B.W.Ahearn Collection.



1590*
Queen Victoria, second type, 1866. *Good very fine.*

\$550

Ex B.W.Ahearn Collection.



1586*
Queen Victoria, second type, 1866. *Considerable mint bloom, slightest surface marks and reverse rim nicks, otherwise good extremely fine.*

\$750

Ex S.J.Green Collection, from Sterling & Currency.



1591*
Queen Victoria, second type, 1866. *Good fine. (2)*

\$800

Ex B.W.Ahearn Collection.

1592
Queen Victoria, second type, 1866. *Very fine or better.* (4)
 \$2,000

Ex W.Rado Collection.

1593
Queen Victoria, second type, 1866. *Very fine or better.* (4)
 \$2,000

Ex W.Rado Collection.

1594
Queen Victoria, second type, 1866. *Very fine or better.* (6)
 \$3,000

Ex W.Rado Collection.



part

1595*
Queen Victoria, second type, 1866, 1867, and 1868. *Nearly very fine; good fine; fine.* (3)
 \$1,400

Ex T.J.Davidson Collection.



1596*
Queen Victoria, second type, 1867. *Some mint bloom, nearly extremely fine.*
 \$750

Ex B.W.Ahearn Collection.



1597*
Queen Victoria, second type, 1867. *Contact marks, otherwise extremely fine or better.*
 \$750

Ex W.Rado Collection.



1598*
Queen Victoria, second type, 1867. *Surface marks and rim bruises, otherwise nearly very fine.*
 \$450

Ex B.W.Ahearn Collection.

1599
Queen Victoria, second type, 1867. *Very fine or better.* (3)
 \$1,500

Ex W.Rado Collection.

1600
Queen Victoria, second type, 1867. *Very fine.* (3)
 \$1,400

Ex W.Rado Collection.



1601*
Queen Victoria, second type, 1868. *Surface marking, otherwise good fine.*
 \$400

Ex B.W.Ahearn Collection.



1602*
Queen Victoria, second type, 1870. *Nearly uncirculated/uncirculated.*
 \$1,000

Ex B.W.Ahearn Collection.



1603*
Queen Victoria, second type, 1870. *Good extremely fine.*
 \$800

Ex W.Rado Collection.



1604*
Queen Victoria, second type, 1870. *Good very fine.*
 \$650

Ex B.W.Ahearn Collection.



1605*
Queen Victoria, second type, 1870. *Nearly very fine.*
 \$450
 Ex B.W.Ahearn Collection.

1606
Queen Victoria, second type, 1870. *Nearly very fine.*
 \$400
 Ex W.Rado Collection.



1607*
Queen Victoria, second type, 1870. *Good fine. (2)*
 \$800
 Ex B.W.Ahearn Collection.

1608
Queen Victoria, second type, 1870. *Very fine or better. (3)*
 \$1,500
 Ex W.Rado Collection.

1609
Queen Victoria, second type, 1870. *Very fine. (3)*
 \$1,400
 Ex W.Rado Collection.

1610
Queen Victoria, second type, 1870. *Very fine or better. (4)*
 \$2,000
 Ex W.Rado Collection.

SYDNEY MINT HALF SOVEREIGNS



1611*
Queen Victoria, first type, 1856. *Good fine.*
 \$700
 Ex W.Rado Collection.

1612
Queen Victoria, first type, 1856. *Fair.*
 \$200
 Ex S.J.Green Collection, from Downies Sale, 1976.

1613
Queen Victoria, first type, 1856; second type, 1861 and 1865.
Fair; very good; good. (3)
 \$600
 Ex T.J.Davidson Collection.

1614
Queen Victoria, second type, 1859. *Very good.*
 \$300
 Private purchase, 18/05/1996.

IMPERIAL SOVEREIGNS - SHIELD REVERSE

1615
Queen Victoria, 1871 incuse WW, 1877, and 1879 Sydney.
Good very fine. (3)
 \$1,200
 Ex W.Rado Collection.

1616
Queen Victoria, 1871 incuse WW, 1877, 1878, and 1879
 Sydney. *Very fine - nearly extremely fine. (4)*
 \$1,600
 Ex W.Rado Collection.

1617
Queen Victoria, 1871 incuse WW, 1873, 1875, 1877, 1878,
 and 1879 Sydney. *Good very fine - extremely fine. (6)*
 \$2,400
 Ex W.Rado Collection.



1618*
Queen Victoria, 1872 Melbourne. *Good very fine.*
 \$400
 Ex T.J.Davidson Collection.

1619
Queen Victoria, 1872 and 1874 Melbourne. *Good very
 fine. (2)*
 \$800
 Ex W.Rado Collection.



1620*
Queen Victoria, 1873 Sydney. *Reverse rim bruise at 5 o'clock, otherwise extremely fine.*
 \$450

Ex B.W.Ahearn Collection.

1621
Queen Victoria, 1874 Melbourne. *Good fine/very fine.*
 \$350

Ex B.W.Ahearn Collection.

1622
Queen Victoria, 1874 (2) and 1884 (2) Melbourne. *Very fine - extremely fine. (4)*
 \$1,500

Ex W.Rado Collection.



1623*
Queen Victoria, 1877 Sydney. *Extremely fine.*
 \$500

Ex S.J.Green Collection, private purchase from Noble Numismatics.

1624
Queen Victoria, 1877 Sydney. *Very fine.*
 \$370

Ex B.W.Ahearn Collection.

1625
Queen Victoria, 1878 Sydney. *Good very fine.*
 \$400



1626*
Queen Victoria, 1880 Sydney. *Obverse polished, nearly extremely fine/extremely fine.*
 \$400

Ex B.W.Ahearn Collection.

1627
Queen Victoria, 1880-83, 1885-86 Sydney. *Very fine - extremely fine. (6)*
 \$2,400

Ex W.Rado Collection.



1628*
Queen Victoria, 1884 Melbourne. *Good extremely fine.*
 \$500

Ex S.J.Green Collection, from Noble Numismatics, Sale 104 (lot 1332).

1629
Queen Victoria, 1884 Sydney; also Great Britain, proof shield sovereign, Elizabeth II, 2002 (S.SC5). *In Perth Mint jarrah presentation case with certificate number 0036, fine; FDC. (2)*
 \$800

IMPERIAL SOVEREIGNS - ST GEORGE REVERSE

1630
Queen Victoria, 1872 Sydney. *Very good.*
 \$350

1631
Queen Victoria - George V, 1872 and 1911 London, 1892 and 1894 Melbourne, 1908 Perth. *All housed in Bullion Sales International case, very fine - good extremely fine. (5)*
 \$1,750

Ex Monsignor Wayne Peters Collection.

1632
Queen Victoria, 1873 and 1874 Melbourne. *Good very fine. (2)*
 \$700

Ex W.Rado Collection.

1633
Queen Victoria, 1873 Sydney and 1874 Melbourne. *Good fine. (2)*
 \$700

Ex B.W.Ahearn Collection.



part

1634
Queen Victoria, 1874 and 1877 Melbourne. *Good very fine; extremely fine/good extremely fine. (2)*
 \$800

Ex B.W.Ahearn Collection.



part

1635*

Queen Victoria, 1875, 1876, and 1886 Melbourne. *Nearly very fine; good fine; extremely fine.* (3)

\$1,150

Ex T.J.Davidson Collection, the last from Noble Numismatics, Sale 92.

1636

Queen Victoria, 1877 Melbourne. *Very fine.*

\$370

Ex B.W.Ahearn Collection.



part

1637*

Queen Victoria, 1877 (2), 1884 Melbourne; 1882 Sydney (McD 154 (2), 167 (rare), 162a). *Very fine - nearly extremely fine.* (4)

\$1,600

Ex Dr V.J.A.Flynn Collection.

1638

Queen Victoria, 1878 and 1884 Melbourne. *Very good - fine.* (2)

\$700



part

1639*

Queen Victoria, 1879 Melbourne. *Good extremely fine.* (2)

\$800

Ex W.Rado Collection.

1640

Queen Victoria, 1880 Melbourne (McD 161). *Nearly very fine.*

\$370



part

1641*

Queen Victoria, 1881, 1882 and 1883 Melbourne. *Fine; nearly uncirculated; good extremely fine.* (3)

\$1,200

Ex B.W.Ahearn Collection.



part

1642*

Queen Victoria, 1884, 1885 (McD 169b), and young head 1887 Melbourne. *Very fine; good extremely fine; nearly uncirculated.* (3)

\$1,200

Ex W.Rado Collection.



part

1643*

Queen Victoria, 1884 and 1887 young head, Sydney. *Nearly extremely fine; nearly uncirculated.* (2)

\$750

Ex B.W.Ahearn Collection.



part

1644*

Queen Victoria, 1885, 1886 and 1887 Melbourne. *Very fine; good fine; good extremely fine.* (3)

\$1,200

Ex B.W.Ahearn Collection.

1645

Queen Victoria, 1886 and young head 1887 Sydney. *Extremely fine or better*. (2)

\$800

Ex W.Rado Collection.



1646*

Queen Victoria, 1886 Melbourne. *Good extremely fine*.

\$450



1647*

Queen Victoria, 1886 Sydney. *Nearly extremely fine/ extremely fine*.

\$400

Ex S.J.Green Collection, from Noble Numismatics, Sale 68 (lot 512).

1648

Queen Victoria, Jubilee head, 1887, 1889 and 1891 Melbourne. *Fine - very fine*. (3)

\$1,050

Ex B.W.Ahearn Collection.

1649

Queen Victoria, 1888 Melbourne and Sydney. *Nearly extremely fine; very fine*. (2)

\$800

1650

Queen Victoria, Jubilee head, 1888 and 1891 Melbourne. *Very good*. (2)

\$700

1651

Queen Victoria, Jubilee head, 1888, 1892 and 1893 Sydney. *Good very fine - nearly extremely fine*. (3)

\$1,200

1652

Queen Victoria, Jubilee head, 1888, 1891, and 1893 Melbourne. *Very fine - nearly extremely fine*. (3)

\$1,200

Ex Dr V.J.A.Flynn Collection.



1653*

Queen Victoria, 1889 Sydney (McD 178a). *Frosty mint bloom, good extremely fine*.

\$400



part

1654*

Queen Victoria, Jubilee head, 1889 Melbourne and 1892 Sydney (McD 179a, 185). *Good extremely fine*. (2)

\$800

1655

Queen Victoria, 1889 and 1890 Melbourne (McD 179a, 181). *Good fine; very fine*. (2)

\$700

Ex B.W.Ahearn Collection.

1656

Queen Victoria, 1890 Sydney (McD 180a). *Nearly uncirculated*.

\$400



1657*

Queen Victoria, 1890 Sydney (McD 180a). *Extremely fine*.

\$400

Ex S.J.Green Collection, from Australian Coin Auctions, Sale 310 (lot 1014).

1658

Queen Victoria, 1890 and 1891 Sydney (McD 180a, 182). *Very fine*. (2)

\$700

Ex B.W.Ahearn Collection.



1659*

Queen Victoria, 1891 and 1892 Melbourne (McD 183a, 185). *Nearly uncirculated*. (2)

\$800

Ex B.W.Ahearn Collection.



1660*
Queen Victoria, 1892 Melbourne. *Good extremely fine.*
 \$500

1661
Queen Victoria, 1892 Sydney. *Nearly extremely fine.*
 \$350

Ex R.Munday Collection, with invoice from Sydney Mint Co., 24/08/83.



1662*
Queen Victoria, Jubilee head, 1893 Sydney. *Nearly uncirculated.*
 \$400

1663
Queen Victoria, Jubilee head, 1893 Sydney; old head, 1894, and 1900 Melbourne. *Very good; fine; extremely fine.* (3)
 \$1,050

1664
Queen Victoria, Jubilee head, 1893 Sydney; old head, 1894 (2), and 1895 Melbourne, 1899 Sydney. *Fine - nearly extremely fine.* (5)
 \$1,800

Ex T.J.Davidson Collection, third and fourth from Noble Numismatics, Sale 93.

1665
Queen Victoria, 1893 and 1894 Melbourne. *Nearly uncirculated.* (2)
 \$750

Ex B.W.Ahearn Collection.



part

1666*
Queen Victoria, 1894 Sydney. *Nearly uncirculated.* (2)
 \$800

Private purchase from KJC, 09/01/1997.

1667
Queen Victoria, 1894 and 1896 Melbourne. *Nearly very fine; good very fine.* (2)
 \$700

Ex B.W.Ahearn Collection.



part

1668*
Queen Victoria, 1894, 1896 and 1899 Melbourne. *The last rubbed, extremely fine, others nearly uncirculated.* (3)
 \$1,200

Ex B.W.Ahearn Collection.

1669
Queen Victoria, 1894 and 1897 Sydney, 1897 Melbourne. *Nearly very fine; extremely fine; very fine.* (3)
 \$1,050

Ex B.W.Ahearn Collection.

1670
Queen Victoria, old head, 1895 Melbourne, 1897 and 1900 Sydney. *Extremely fine - nearly uncirculated.* (3)
 \$1,200

Ex Dr V.J.A.Flynn Collection.



1671*
Queen Victoria, 1896 Melbourne. *Good extremely fine.*
 \$400

Ex S.J.Green Collection, from Noble Numismatics, Sale 100 (lot 1371).



part

1672*
Queen Victoria, 1898-1901 Sydney. *The second uncirculated, others nearly uncirculated.* (4)
 \$1,600

Ex B.W.Ahearn Collection.



1673*

Queen Victoria, 1899 Perth. *Reverse brilliance, surface marks, otherwise extremely fine.*

\$750

Private purchase from KJC, 09/01/1997.



1674*

Queen Victoria, 1899 Perth. *Nearly extremely fine/good extremely fine.*

\$750

Private purchase from KJC, 09/01/1997.

1675

Queen Victoria, 1899 Perth. *In jarrah case, well struck, extremely fine.*

\$500

1676

Queen Victoria, 1899 and 1900 Melbourne, 1900 Perth. *Very fine; extremely fine; good fine. (3)*

\$1,100

Ex B.W.Ahearn Collection.

1677

Queen Victoria, 1900 Melbourne, Perth, and Sydney. *Set of three in Perth Mint wooden presentation box with certificate number 053, nearly extremely fine. (3)*

\$1,100

1678

Queen Victoria - George V, 1900-1911 Perth. *In a prestige collection case with certificate, extremely fine - uncirculated. (12)*

\$4,200

Ex B.W.Ahearn Collection, from Noble Numismatics, Sale 70 (lot 398).

1679

Queen Victoria, 1901 Perth. *Nearly uncirculated.*

\$400

In a Perth Mint Flagpole edition holder, number 133/220.

Ex R.Munday Collection.

1680

Queen Victoria - George V, Perth Mint pre-decimal type set, sovereigns, 1901, 1909, 1920, and 1931; shilling, 1946 dot, penny, 1960, and halfpenny, 1963. *In presentation case with certificate, one of 100 sets, nearly uncirculated - uncirculated. (7)*

\$1,600

Ex B.W.Ahearn Collection.