

AUSTRALIAN GOLD COINS

SYDNEY MINT SOVEREIGNS



2098\*  
Queen Victoria, second type, 1857. *Nearly extremely fine.*  
\$3,000



2099\*  
Queen Victoria, second type, 1858. *Nearly fine.*  
\$650



2100\*  
Queen Victoria, second type, 1859. *Both obverse and reverse with contact marks, good very fine.*  
\$850



2101\*  
Queen Victoria, second type, 1861. *Obverse rim bruise at 4 o'clock, otherwise toned extremely fine.*  
\$1,200

Ex David Ross Collection, private purchase from KJC in January 2006.



2102\*  
Queen Victoria, second type, 1861. *Extremely fine.*  
\$1,000



2103\*  
Queen Victoria, second type, 1863. *Good fine.*  
\$1,000

2104  
Queen Victoria, second type, 1863. *Very fine.*  
\$700



2105\*  
Queen Victoria, second type, 1864. *Obverse with cut from chin to hairline on Queen's face, otherwise very fine/ extremely fine.*  
\$800



2106\*  
Queen Victoria, second type, 1864. *Good very fine.*  
\$700

Ex Reserve Bank of Australia Collection, Downies, Sale 290 (lot 1598) 29th-30th November 2005. With ticket.



2107\*  
Queen Victoria, second type, 1864. *Very fine.*  
\$700

In a slab by NGC as XF45.



2108\*  
Queen Victoria, second type, 1864. *Good fine.* \$650



2109\*  
Queen Victoria, second type, 1866. *Nearly extremely fine/ extremely fine.* \$800

Ex David Ross Collection from Spink Australia, private purchase March '82.



2110\*  
Queen Victoria, second type, 1866. *Nearly extremely fine.* \$700



2111\*  
Queen Victoria, second type, 1866. *Cut on neck, otherwise very fine.* \$650



2112\*  
Queen Victoria, second type, 1866. *Fine/good fine.* \$650

2113  
Queen Victoria, second type, 1867. *Reverse rim bruise at 3 o'clock, otherwise nearly extremely fine.* \$800



2114\*  
Queen Victoria, second type, 1867. *With surface marks, otherwise good extremely fine.* \$900

2115  
Queen Victoria, second type, 1867. *Obverse and reverse with contact marks, extremely fine.* \$800



2116\*  
Queen Victoria, second type, 1867. *Good fine.* \$650



2117\*  
Queen Victoria, second type, 1868. *Nearly extremely fine.* \$960

Ex David Ross Collection, private purchase from Spink Australia, November 1981.



2118\*  
Queen Victoria, second type, 1868. *A little rubbed, nearly extremely fine.* \$800

Ex David Ross Collection from Spink Australia Sale 18 (lot 2316).



2119\*  
Queen Victoria, second type, 1868. *Very fine.* \$800



2120\*  
Queen Victoria, second type, 1870. *Nearly uncirculated.* \$750

Private purchase from Jaggards in 2000.



2121\*  
**Queen Victoria**, second type, 1870. *With surface marks in fields, extremely fine.*  
 \$900



2122\*  
**Queen Victoria**, second type, 1870. *Nearly extremely fine/ extremely fine.*  
 \$900

Ex David Ross Collection from Spink Australia, private purchase Dec '81.



2123\*  
**Queen Victoria**, second type, 1870. *Rim bruise at 3 o'clock, otherwise nearly extremely fine.*  
 \$750



2124\*  
**Queen Victoria**, second type, 1870. *Very fine.*  
 \$700



2125\*  
**Queen Victoria**, second type, 1870. *Nearly very fine.*  
 \$700

2126  
**Queen Victoria**, second type, 1870. *Nearly very fine.*  
 \$700



2127\*  
**Queen Victoria**, second type, 1870. *Edge bumps, otherwise nearly very fine.*  
 \$650



2128\*  
**Queen Victoria**, second type, 1870. *Good fine/very fine.*  
 \$700



2129\*  
**Queen Victoria**, second type, 1870. *Good fine.*  
 \$650

2130  
**Queen Victoria**, second type, 1870. *Good fine.*  
 \$600

2131  
**Queen Victoria**, second type, 1870. *Fine.*  
 \$650

**SYDNEY MINT HALF SOVEREIGNS**



2132\*  
**Queen Victoria**, first type, 1856. *Even wear, contact mark on top of date, very good.*  
 \$450

Ex D.Featherstone/L.McNaught Collection.

2133  
**Queen Victoria**, first type, 1856. *Cleaned, buckled, with some pitting, poor.*  
 \$400



2134\*  
**Queen Victoria**, second type, 1857. *Very good.*  
 \$350

Ex D.Featherstone/L.McNaught Collection.



2135\*  
**Queen Victoria**, second type, 1858. *Fine/very fine.*  
 \$750

Ex Reserve Bank of Australia Collection, Downies, Sale 290, 29th-30th November 2005.

In a slab by NGC as XF40.



2136\*  
Queen Victoria, second type, 1858. *Good fine.*

\$500

Ex D.Featherstone/L.McNaught Collection.



2142\*  
Queen Victoria, second type, 1861. *Very good.*

\$350

Ex D.Featherstone/L.McNaught Collection.



2137\*  
Queen Victoria, second type, 1859. *Very good/nearly fine.*

\$400

Ex D.Featherstone/L.McNaught Collection.



2143\*  
Queen Victoria, second type, 1862. *Good fine/nearly very fine and scarce thus.*

\$450

Ex D.Featherstone/L.McNaught Collection.



2138\*  
Queen Victoria, second type, 1859. *Very good.*

\$300



2144\*  
Queen Victoria, second type, 1862. *Good fine.*

\$1,200

Private purchase from Jaggards in 2000.



2139\*  
Queen Victoria, second type, 1860. *Slight bend, toned nearly fine and rare.*

\$800

Ex D.Featherstone/L.McNaught Collection.



2145\*  
Queen Victoria, second type, 1862. *Very good.*

\$300



2140\*  
Queen Victoria, second type, 1860. *Very good/fine.*

\$750

Ex David Ross Collection from Noble Numismatics Sale 65 (lot 1478).



2146\*  
Queen Victoria, second type, 1863. *Good fine.*

\$1,350



2141\*  
Queen Victoria, second type, 1861. *Fine.*

\$600



2147\*  
Queen Victoria, second type, 1863. *Dented, otherwise good fine.*

\$400



2148\*  
Queen Victoria, second type, 1864. *Very good.*

\$350

Ex D.Featherstone/L.McNaught Collection.



2154\*  
Queen Victoria, 1872 Melbourne. *Good extremely fine.*

\$700



2149\*  
Queen Victoria, second type, 1865. *Nearly good fine.*

\$500

Ex D.Featherstone/L.McNaught Collection.



2155\*  
Queen Victoria, 1877 Sydney. *Good extremely fine.*

\$900

In a slab by PCGS as AU58.



2150\*  
Queen Victoria, second type, 1866. *Nearly very fine.*

\$900



2156\*  
Queen Victoria, 1878 Sydney. *Extremely fine.*

\$650



2151\*  
Queen Victoria, second type, 1866. *Very good.*

\$350

Ex D.Featherstone/L.McNaught Collection.



2157\*  
Queen Victoria, 1879 Sydney. *Extremely fine.*

\$600

IMPERIAL SOVEREIGNS - SHIELD REVERSE



2152\*  
Queen Victoria, 1871 Sydney, WW raised (McD.118a).  
*Nearly uncirculated.*

\$700



2160\*  
Queen Victoria, 1883 Melbourne. *Extremely fine.*

\$1,500



2153\*  
Queen Victoria, 1871 Sydney, WW incuse (McD.118b).  
*Nearly extremely fine.*

\$700



2161\*  
Queen Victoria, 1884 Melbourne. *Good extremely fine.*

\$600



2162\*  
Queen Victoria, 1884 Melbourne. *Extremely fine.*  
\$750



2163\*  
Queen Victoria, 1884 Sydney. *Extremely fine.*  
\$650



2164\*  
Queen Victoria, 1884 Sydney. *Obverse with scratch across Queen's face, otherwise extremely fine.*  
\$600



2165\*  
Queen Victoria, 1886 Sydney. *Good extremely fine.*  
\$800

In a slab by PCGS as AU55.



2166\*  
Queen Victoria, 1887 Sydney. *Very fine/extremely fine.*  
\$750

Ex Donald McDougal Collection.

IMPERIAL SOVEREIGNS - ST GEORGE REVERSE



2167\*  
Queen Victoria, 1872 Sydney. *Extremely fine.*  
\$700

2168  
Queen Victoria, 1872 Sydney. *Very fine.*  
\$650

2169  
Queen Victoria, 1874 Melbourne. *Contact marks in fields, otherwise, good very fine.*  
\$550



2170\*  
Queen Victoria, 1874 Sydney. *Nearly uncirculated.*  
\$650



2171\*  
Queen Victoria, 1874 Sydney. *Good extremely fine.*  
\$650

Ex Reserve Bank of Australia Collection, Downies, Sale 290 (lot 1803) 29th-30th November 2005.

2172  
Queen Victoria, 1874 Sydney. *With contact marks in fields, good fine.*  
\$600



2173\*  
Queen Victoria, 1876 Melbourne. *Good extremely fine.*  
\$1,100



2174\*  
Queen Victoria, 1878 Melbourne. *Good very fine.*  
\$650

2175  
Queen Victoria, 1878 Melbourne. *Good very fine.* \$650



2176\*  
Queen Victoria, 1879 Melbourne (McD.157). *Extremely fine.* \$1,000



2177\*  
Queen Victoria, 1879 Melbourne (McD.157a). *Nearly extremely fine.* \$600

Ex David Ross Collection, private purchase from Spink Australia in April 1986.



2178\*  
Queen Victoria, 1879 Melbourne (McD.157a). *Nearly very fine.* \$600

2179  
Queen Victoria, 1879 (McD.157), 1884 (McD.167b) and 1886 Melbourne. *Very fine or better.* (3) \$1,650

2180  
Queen Victoria, 1881 Melbourne (McD.161). *Very fine.* \$600

2181  
Queen Victoria, 1881 Melbourne (McD.161a). *Very fine.* \$600



2182\*  
Queen Victoria, 1881 Sydney (McD.160a). *Very fine.* \$600



2183\*  
Queen Victoria, 1884 Melbourne (McD.167). *Good extremely fine.* \$550



2184\*  
Queen Victoria, 1884 Sydney. *Extremely fine.* \$550

2185  
Queen Victoria, 1884 Sydney. *Good very fine.* \$600

2186  
Queen Victoria, 1885 Melbourne (McD.169c). *Nearly extremely fine.* \$500



2187\*  
Queen Victoria, 1885 Melbourne (McD.169c). *Good fine.* \$550

2188  
Queen Victoria, 1885 and 1886 Melbourne (McD.169, 171). *Very fine - extremely fine.* (2) \$1,200



2189\*  
Queen Victoria, 1885 Sydney. *Extremely fine.* \$550



2190\*  
Queen Victoria, 1886 Melbourne. *Extremely fine.* \$550



2191\*  
Queen Victoria, 1886 Melbourne. *Nearly extremely fine.*  
\$600



2192\*  
Queen Victoria, 1886 Melbourne. *Very fine - extremely fine.* (2)  
\$1,200



2193\*  
Queen Victoria, 1886 and 1887 Melbourne. *Extremely fine.* (2)  
\$1,250

Ex Donald McDougal Collection for second coin.



2194\*  
Queen Victoria, 1886 Sydney. *Extremely fine.*  
\$550

2195  
Queen Victoria, young head, 1887 Melbourne. *Very fine.*  
\$550



2196\*  
Queen Victoria, young head, 1887 Sydney. *Nearly extremely fine.*  
\$650

Ex David Ross Collection, from Spink Australia in November 1985.



2197\*  
Queen Victoria, young head, 1887 Sydney. *Nearly extremely fine.*  
\$500

2198  
Queen Victoria, Jubilee head, 1887 Melbourne (McD.175).  
*Very fine.*  
\$550



2199\*  
Queen Victoria, Jubilee head, 1887 Melbourne (McD.175a).  
*Extremely fine.*  
\$550

2200  
Queen Victoria, Jubilee head, 1887 Melbourne (McD.175a).  
*Extremely fine.*  
\$550



2201\*  
Queen Victoria, Jubilee head, 1887 Sydney (McD.174).  
*Extremely fine.*  
\$550

2202  
Queen Victoria, Jubilee head, 1887 Sydney (McD.174).  
*Very fine.*  
\$550



2203\*  
Queen Victoria, 1888 Melbourne (McD.177). *Nearly uncirculated.*  
\$600





2204\*  
Queen Victoria, 1888 Melbourne (McD.177b). *Nearly extremely fine.*

\$600

2205  
Queen Victoria, 1888 Sydney (McD.176). *Very fine.*

\$550



2206  
Queen Victoria, 1888 Sydney (McD.176c). *Extremely fine.*

\$900

2207  
Queen Victoria, 1889 Melbourne (McD.179). *Very fine/nearly extremely fine.*

\$550

2208  
Queen Victoria, 1889 Melbourne (McD.179). *Finest very fine.*

\$550

2209  
Queen Victoria, 1889 Melbourne (McD.179a). *Very fine.*

\$550

2210  
Queen Victoria, 1889 Sydney (McD.178). *Extremely fine.*

\$550



2211\*  
Queen Victoria, 1889 Sydney (McD.178). *Extremely fine.*

\$550

2212  
Queen Victoria, 1889 Sydney. *Nearly extremely fine.*

\$550

2213  
Queen Victoria, 1890 Sydney (McD.180). *Extremely fine/very fine.*

\$550

2214  
Queen Victoria, 1890 Sydney (McD.180). *Obverse with edge knock at 12 o'clock and scratch on Queen's face from ear to lower part of face, otherwise good very fine.*

\$550



2215\*  
Queen Victoria, 1890 Sydney (McD.180). *Very fine.*

\$550



2216\*  
Queen Victoria, 1890 Sydney (McD.180a). *Light golden tone, nearly uncirculated.*

\$650



2217\*  
Queen Victoria, 1890 Sydney (McD.180a). *Extremely fine.*

\$600



2218\*  
Queen Victoria, 1891 Melbourne (McD.183a). *Extremely fine.*

\$600

2219  
Queen Victoria, 1891 Melbourne and 1891 Sydney (McD.182, 183a). *Very fine - nearly extremely fine. (2)*

\$1,200

2220  
Queen Victoria, 1891 Sydney (McD.182). *Very fine.*

\$550



2221\*  
Queen Victoria, 1892 Melbourne. *Obverse surface marks, otherwise nearly uncirculated.*

\$800



2222\*  
Queen Victoria, 1892 Melbourne. *Nearly uncirculated.*  
\$500



2228\*  
Queen Victoria, 1892 Sydney. *Very fine extremely fine.*  
\$650



2223\*  
Queen Victoria, 1892 Melbourne. *Extremely fine.*  
\$650

2229  
Queen Victoria, 1892 Sydney. *Very fine.*  
\$550



2230\*  
Queen Victoria, Jubilee head 1893 Sydney. *Nearly extremely fine/good extremely fine.*  
\$600



2224\*  
Queen Victoria, 1892 Melbourne. *Very fine extremely fine.*  
\$650

In a slab by PCGS as AU58.



2231\*  
Queen Victoria, Jubilee head, 1893 Melbourne (McD.188a).  
*Nearly uncirculated.*  
\$650



2225\*  
Queen Victoria, 1892 Melbourne. *Very fine.*  
\$650

Ex Robert C Hall Estate, Bowers and Ruddy Galleries, 26-28 October 1978 (lot 3073). With ticket.



2232\*  
Queen Victoria, Jubilee head, 1893 Melbourne (McD.188a).  
*Extremely fine.*  
\$700



2226\*  
Queen Victoria, 1892 Sydney. *Nearly uncirculated.*  
\$700



2227\*  
Queen Victoria, 1892 Sydney. *Nearly extremely fine.*  
\$650

2233\*  
Queen Victoria, 1894 Melbourne. *Nearly extremely fine.*  
\$650



2234\*  
Queen Victoria, 1894 Melbourne and 1895 Sydney. *Very fine - extremely fine.* (2)

\$1,250



2235\*  
Queen Victoria, 1894 and 1896 Melbourne. *Very fine - extremely fine.* (2)

\$1,300



2236\*  
Queen Victoria, 1896 Melbourne. *Extremely fine.*

\$650



2237\*  
Queen Victoria, 1896 Melbourne. *Nearly very fine/good very fine.*

\$550



2238\*  
Queen Victoria, 1896 Sydney. *Extremely fine.*

\$700



2239\*  
Queen Victoria, 1896 Sydney. *Nearly extremely fine.*

\$650



2240\*  
Queen Victoria, 1897 Melbourne. *Mirror-like obverse field, nearly uncirculated.*

\$650



2241\*  
Queen Victoria, 1898 Melbourne. *Nearly uncirculated.*

\$650



2242\*  
Queen Victoria, 1898 Melbourne. *Good extremely fine.*

\$650



2243\*  
Queen Victoria, 1899 Melbourne and 1899 Sydney. *Extremely fine - nearly uncirculated.* (2)

\$1,250



2244\*  
Queen Victoria, 1899 Sydney. *Uncirculated.*

\$650



2245\*  
**Queen Victoria, 1899 Sydney. *Nearly uncirculated.***  
 \$700

Ex Reserve Bank of Australia Collection, Downies, Sale 290 (lot 2231)  
 29th-30th November 2005. With ticket.



2246\*  
**Queen Victoria, 1900 Melbourne. *Nearly extremely fine.***  
 \$650



2247\*  
**Queen Victoria, 1900 Perth. *Good extremely fine.***  
 \$600

2248  
**Queen Victoria, 1901 Melbourne; George V, 1915 Melbourne. *The first polished, otherwise extremely fine - good extremely fine. (2)***  
 \$1,000



2249\*  
**Queen Victoria, 1901 Perth. *Nearly uncirculated.***  
 \$700

2250  
**Edward VII, 1902 Melbourne. *Nearly very fine.***  
 \$550



2251\*  
**Edward VII, 1903 Sydney. *Nearly uncirculated.***  
 \$550



2252\*  
**Edward VII, 1903 Sydney. *Extremely fine.***  
 \$550

2253  
**Edward VII, 1904 Melbourne. *Contact marks in fields, nearly extremely fine.***  
 \$650

2254  
**Edward VII, 1904 Melbourne and 1904 Perth. *Contact marks in fields, good very fine. (2)***  
 \$1,300

2255  
**Edward VII, 1905 Perth. *Good extremely fine.***  
 \$550

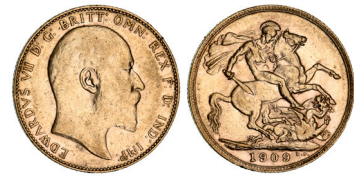
2256  
**Edward VII, 1905 Perth. *Good fine.***  
 \$550



2257\*  
**Edward VII, 1906 Perth. *Struck on a slightly smaller planchet, nearly extremely fine.***  
 \$650



2258\*  
**Edward VII, 1907 Melbourne. *Nearly extremely fine.***  
 \$550



2259\*  
**Edward VII, 1909 Perth. *Very fine/extremely fine.***  
 \$650

2260  
**Edward VII, 1910 Perth. *Very fine.***  
 \$550

2261  
**George V, 1911 Sydney, 1931 Perth. *Very fine; good very fine. (2)***  
 \$1,100

2262  
George V, 1912 and 1917 Perth. *Good extremely fine; adhesion on obverse, otherwise good extremely fine.* (2)  
\$1,100

2263  
George V, 1912 and 1925 Sydney. *Good extremely fine.* (2)  
\$1,100

2264  
George V, 1913 Melbourne. *Extremely fine.*  
\$550



2265\*  
George V, 1914 Perth. *Choice uncirculated.*  
\$600



2266\*  
George V, 1915 Sydney. *Attractive orange tone, uncirculated.*  
\$600

2267  
George V, 1917 Sydney. *Tiny rim nicks, otherwise good extremely fine.*  
\$550



2268\*  
George V, 1919 Melbourne. *Extremely fine and scarce.*  
\$900



2269\*  
George V, 1920 and 1921 Perth. *Uncirculated.* (2)  
\$1,000  
Private purchase from KJC 16/12/03 and second from the UK 22/05/06.



part

2270\*  
George V, 1922 and 1924 Perth. *Uncirculated.* (2)  
\$1,000  
Private purchase from Winsor & Sons and GK Coins (UK) Nov. 2004.



2271\*  
George V, 1925 Sydney. *Nearly uncirculated.*  
\$600



2272\*  
George V, 1927 Perth. *Contact marks on neck, otherwise nearly uncirculated and scarce.*  
\$900



2273\*  
George V, 1927 Perth. *Good very fine and scarce.*  
\$700



2274\*  
George V, small head, 1929 Perth. *Extremely fine.*  
\$700

2275  
George V, 1929 Perth, jeweller's copy with large head obverse (8.02g). *Uncirculated.*  
\$400



2276\*  
George V, small head, 1930 and 1931 Perth. *Obverse contact marks on the second, otherwise nearly uncirculated.* (2)  
\$1,200