

AUSTRALIAN COMMONWEALTH COINS

PATTERNS AND PROOFS

Le Souef - Hagley Collection lead trials 1920

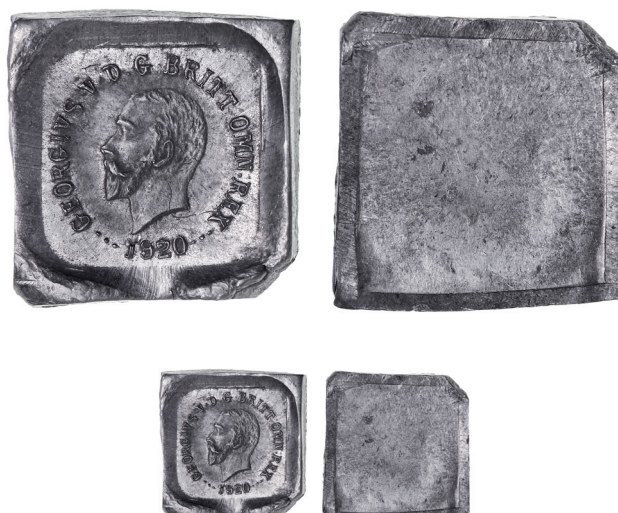


1408\*

George V, Melbourne Mint, lead trial of the obverse of a kookaburra pattern square penny, 1920 (R.type7) (11.45g). *Extremely fine and excessively rare.*

\$7,500

Ex Le Souef 1926, S.V.Hagley Collection 1966, from the Rare Coin Company with their ticket.



1409\*

George V, Melbourne Mint or Stokes, pattern Kookaburra square halfpenny, 1920, obverse only trial strike in lead (7.18g)(R. I). *Extremely fine and possibly unique.*

\$5,000

Ex A.M. Le Souef and S.V. Hagley Collection, sold by the Rare Coin Company 20/07/09 (\$80,000) with their 2x2 holder and invoice.

Choice uncirculated, A very rare kookaburra penny 1920



1410\*

George V, Melbourne Mint pattern kookaburra square cupro-nickel penny (1920)(3.83g) by D.Richardson (R.Type7). *Nearly as struck choice uncirculated and very rare.*

\$45,000

The finest of two known in private hands and the rarest Commonwealth coin



1411\*

George V, Melbourne Mint pattern shilling, 1919M, in .625 fine silver (5.55g) (R.P61), stamped with S twice on either side to signify a specimen (or trial) only. No 1919 shillings were struck for circulation. *Toned nearly uncirculated and excessively rare, one of only two known in private hands.*

\$90,000

Ex C. J. Cerutti Director of the Note Issue Dept. 1918-1923, later from the Rare Coin Company, May 2007 (\$225,000).

Very rare proof sixpence 1924



1412\*

George V, Melbourne Mint proof or specimen sixpence, 1924. *FDC and very rare.*

\$8,000

Private purchase from Downies from the Woulfin Collection, 1999 and Coinworks.

Gem proof 1934 shilling



1413\*

George V, Melbourne Mint proof shilling 1934. *Gem FDC, probably the finest known.*

\$12,500

Extremely rare proof 1936 florin



1414\*

George V, Melbourne Mint specimen or proof florin, 1936. *Attractive grey tone, FDC and extremely rare.*

\$12,000

Ex Noble Numismatics Sale 67 (lot 1460) private purchase from Coinworks.



1415\*

George VI, Melbourne Mint proof halfpenny, 1938. *Mostly brilliant red, FDC and very rare.*

\$2,800

In a slab by NGC as PF62RB.

Ex Demarete Collection, with ticket from M.R.Roberts (13/11/19, \$15,000).



1416\*

George VI, Perth Mint proof halfpenny, 1950. *Blue brown tone, traces of mint red, virtually FDC and very rare.*

\$800

In a slab by PCGS as PR65BN.

1417

Elizabeth II, Perth Mint proof pennies, 1957 and 1958. *Toned, otherwise nearly FDC. (2)*

\$200



part

1418\*  
Elizabeth II, Melbourne Mint proof penny, 1958; Perth Mint proof penny 1957. Red and brown, nearly FDC; heavy dark tone, good extremely fine. (2)

\$150



1419\*  
Elizabeth II, Perth Mint proof penny, 1958. Nearly FDC.

\$200



1420\*  
Elizabeth II, Perth Mint proof penny, 1959. Traces of carbon spots, choice FDC.

\$800

In a slab by PCGS as PR66RD.

1421  
Elizabeth II, Perth Mint proof penny, 1959. Traces of carbon spots, otherwise FDC.

\$500

In a slab by PCGS as PR66RD.



1422\*  
Elizabeth II, Perth Mint proof penny, 1959. Tiny carbon spot either side, otherwise red FDC.

\$160



1423\*  
Elizabeth II, Perth Mint proof set, 1961. Slight spotting, otherwise nearly FDC. (2)

\$250



1424\*  
Elizabeth II, Perth Mint proof set, 1962. Spotting, otherwise nearly FDC. (2)

\$150

1425  
Elizabeth II, Melbourne Mint proof set, 1963. In black plastic case of issue, FDC. (4)

\$150

1426  
Elizabeth II, Melbourne Mint proof set 1963. In 2x2 holders, FDC. (4)

\$200

1427  
Elizabeth II, Melbourne Mint proof sets, 1963 (3). In blue plastic cases of issue, FDC. (12)

\$600

YEAR SETS



1428\*  
Edward VII, year set 1910, florin, shilling, sixpence and threepence. *Extremely fine - uncirculated.* (4)  
\$1,200



1429\*  
Edward VII, year set 1910, florin, shilling, sixpence and threepence. *Very fine - extremely fine.* (4)  
\$400



part  
1430\*  
George VI, year set, 1938, florin to halfpenny. *Nearly uncirculated - uncirculated.* (6)  
\$150

CROWNS



1431\*  
Edward VIII, 1936 retrospective issue in silver by Pinches for G.E. Hearn. *In case of issue, FDC.*  
\$70

1432  
George VI, 1937 and 1938. *Very fine; extremely fine/good extremely fine.* (2)  
\$150



part  
1433\*  
George VI, 1937 (2) and 1938. *Extremely fine and nearly uncirculated.* (3)  
\$200

FLORINS



1434\*  
Edward VII, 1910. Full original mint bloom, well struck uncirculated.

\$5,000

Ex Purchased from Spink Australia in 1977, Ex Noble Numismatics Sale 83 (lot 1483).



1435\*  
George V, 1913. Gold and brown grey toning, underlying mint bloom, nearly uncirculated and rare in this condition.

\$4,000

In a slab by PCGS as MS62.



1436\*  
George V, 1914. Full original satin-like mint bloom with peripheral golden highlights, choice uncirculated and rare in this condition, one of the finest known.

\$4,000

Ex Jon Saxton Collection & Noble Numismatics Sale 108 (lot 1460) and Sale 131 (lot 497).



1437\*  
George V, 1916M. Slightly rubbed, otherwise nearly uncirculated.

\$650



1438\*  
George V, 1917M. *Good extremely fine/nearly uncirculated.*

\$400



1442\*  
George V, 1932. *Nearly extremely fine and rare in this condition.*

\$1,500

Ex Noble Numismatics Sale 130 (lot 1570).



1439\*  
George V, 1923. *Full cartwheeling mint bloom, two tiny carbon strips on the reverse, nearly choice uncirculated and rare in this condition.*

\$2,750



1440\*  
George V, 1925. *Subdued toned obverse, full original mint bloom, nearly choice uncirculated.*

\$1,000



1441\*  
George V, 1932. *Good extremely fine or nearly uncirculated and rare in this condition.*

\$4,000

In a slab by PCGS as AU58.



1443\*  
George V, 1933. *Good extremely fine and rare in this condition.*

\$1,250

Ex Noble Numismatics Sale 130 (lot 1571).





1444\*  
George V, 1934-35 Melbourne Centenary. Toned nearly uncirculated.

\$450



1448\*  
George V, 1935. Subdued mint bloom, dusty toned around highlights, good extremely fine.

\$150



1449  
George V, 1936. Slightly rubbed, well struck, uncirculated.

\$300

### SHILLINGS

1445\*  
George V, 1934-35 Melbourne Centenary. Nearly uncirculated.

\$400

In a slab by NGS as MS62.



1450\*  
Edward VII, 1910. Subdued frosty mint bloom, uncirculated.

\$300



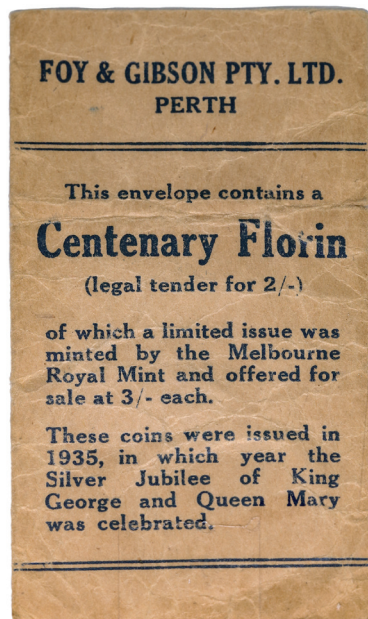
1446\*  
George V, 1934-35 Melbourne Century. Nearly uncirculated.

\$400



1451\*  
George V, 1912. Underlying original frosty mint bloom, uncirculated and rare in this condition.

\$400



1447\*  
George V, 1934-35 Melbourne Centenary florin, Foy & Gibson Pty Ltd, Perth bag only. Very fine and rare.

\$400



1452\*  
George V, 1916M. Struck with 30 degree die rotation as were the specimen strikes for this first issue of Commonwealth coins by the Melbourne Mint, toned uncirculated.

\$500

In a slab by PCGS as MS65.



1453\*  
George V, 1920M. Underlying mint bloom, some peripheral toning, nearly uncirculated and rare thus.

\$500



1458\*  
George V, 1931. Light grey frosty tone, good extremely fine.

\$100



1454\*  
George V, 1920M. Subdued mint bloom, slight spotting, nearly uncirculated and rare in this condition.

\$400



1459\*  
George V, 1933. Cleaned, otherwise extremely fine or better and rare in this condition.

\$750



1455\*  
George V, 1922. Nearly uncirculated.

\$200



1460\*  
George V, 1935. Minor obverse surface marks, otherwise brilliant uncirculated/choice uncirculated.

\$800



1456\*  
George V, 1925. Nearly uncirculated.

\$200



1461\*  
George VI, 1938. Uncirculated.

\$70



1457\*  
George V, 1928. Full original frosty mint bloom, uncirculated and rare, one of the finest known.

\$1,000

In a slab by PCGS as MS62.



part

1462\*  
George VI, 1939, 1942, 1943, 1946 dot (Perth), 1948, 1950 and 1952. Extremely fine or better. (7)

\$200

SIXPENCES



1463\*  
Edward VII, 1910. *Lightly toned full original mint bloom, choice uncirculated.*

\$250



1464\*  
George V, 1911. *Choice uncirculated and rare thus.*

\$1,500

In a slab by NGC as MS64.



1465\*  
George V, 1917M. *Blue grey peripheral toning, full mint bloom uncirculated/choice uncirculated.*

\$750



1466\*  
George V, 1918M. *Polished, otherwise extremely fine or better and rare thus.*

\$400

Ex Lieut. Cmdr. Maurice G. Rose Collection, purchased 22/9/80 (\$62) & Noble Numismatics Sale 130 (lot 930).



1467\*  
George V, 1919M. *Full original mint bloom, choice uncirculated.*

\$1,500



1468\*  
George V, 1920M. *Attractive blue grey toning, full original mint bloom, unmarked and well struck, virtually gem uncirculated and rare thus, one of the finest known.*

\$4,000

Ex Heathcote Collection.



1469\*  
George V, 1921. *Frosty mint bloom, uncirculated.*

\$400

In a slab by PCGS as MS63.



1470\*  
George V, 1928. *Golden peripheral toned frosty mint bloom, nearly uncirculated.*

\$350



THREEPENCES



1471\*  
Edward VII, 1910. *Iridescent tone full original mint bloom, choice uncirculated.*

\$150



1472\*  
Edward VII, 1910. *Uncirculated.*

\$150



1473\*  
George V, 1911. *Extremely fine/nearly uncirculated.*

\$250

In a slab by NGC as MS61.



1476\*  
George V, 1920M. *Attractive toning over full original mint bloom, uncirculated/choice uncirculated and rare thus.*

\$2,500

Ex Heathcote Collection.



1474\*  
George V, 1915. *Full original frosty mint bloom, choice uncirculated and very rare in this condition, one of the finest known.*

\$4,000

In a slab by PCGS as MS64.



1477\*  
George V, 1921. *Peripheral gold toning on the reverse, uncirculated/choice uncirculated and rare in this condition, one of the finest known.*

\$1,250



1475\*  
George V, 1919M. *Deep blue grey toning over full original mint bloom, choice uncirculated.*

\$750

Ex Noble Numismatics Sale 118 (lot 1201), Heathcote duplicate.



1478\*  
George V, 1922/1 overdate. *Very good and rare.*

\$2,000





1479\*  
George V, 1934/3 overdate. *Only slight trace of 3, good very fine.*

\$170



1480\*  
George V, 1934 close lis. *Choice uncirculated and rare in this condition.*

\$200

PENNIES



1483\*  
George V, 1917. *Slight stain on obverse, otherwise brown and red uncirculated.*

\$300



1484\*  
George V, 1915H. *Glossy brown with traces of red, nearly uncirculated.*

\$300



1481\*  
George V, 1911. *Full original mint red bloom, choice uncirculated.*

\$800



1482\*  
George V, 1916I. *Some spotting, otherwise red uncirculated.*

\$250

Ex Noble Numismatics Sale 122 (lot 1321).

Possibly the finest known broken N 1925 penny



1485\*

George V, 1925 London die. Broken N die state resulting from a die clash. *Attractive underlying mint bloom, uncirculated and very rare in this condition, one of the finest if not the finest known.*

\$8,000

In a slab by PCGS as MS62BN.



1486\*

George V, 1925 London die. *Partly glossy brown, good extremely fine and rare in this condition.*

\$750

Above average grade 1930 penny



1487\*

George V, 1930, Indian die. *Six pearls, part centre diamond, even brown patina, nearly very fine and rare.*

\$20,000

Ex Ken Klotz Collection.

Another above average 1930 penny



1488\*

George V, 1930 Indian die. *Part centre diamond, six pearls, very fine and rare.*

\$18,000

A third six pearls 1930 penny



1489\*

George V, 1930 Indian die. *Six pearls, good fine/very fine and rare.*

\$16,000



1492\*  
George V, 1935 London die. Nearly full mint red, uncirculated.

\$150



1493\*  
George VI, 1946. Metal flaw above 4, minor contact marks, otherwise glossy extremely fine, scarce thus.

\$150

HALFPENNIES



1490\*  
George V, 1930 Indian die. Four clear pearls, even brown patina, fine and rare.

\$16,000

1494\*  
George V, 1911. Virtually full original mint red uncirculated.

\$400



1491\*  
George V, 1932. Glossy blue brown with hints of red, nearly uncirculated.

\$170

1495\*  
George V, 1914H. Brown and red, nearly uncirculated.

\$250

Ex Klaus Ford with his holder.





1496\*  
George V, 1915H. *Some surface pitting, good very fine and scarce in this condition.*

\$150



1501\*  
George V, 1923. *Diagnostic peripheral die breaks either side, even brown patina, good fine.*

\$600



1497\*  
George V, 1919. *Two carbon spots on reverse, otherwise red and brown, nearly uncirculated.*

\$120

Ex Klaus Ford with his holder.



1502\*  
George V, 1924. *Glossy brown, good extremely fine.*

\$350



1498\*  
George V, 1922, die chip on left of base of ONE. *Red uncirculated.*

\$400

In a slab by PCGS as MS64RB.

Ex Downies Sale (lot 1475) with their catalogue cut-out.



1503\*  
George V, 1927. *Brown and red, probably cleaned, nearly uncirculated.*

\$120

Ex Klaus Ford with his holder.



1499\*  
George V, 1923. *Peripheral die breaks either side, obverse rim nick at 4 o'clock, otherwise nearly very fine.*

\$750



1504\*  
George V, 1929. *Attractive nearly full mint red bloom, choice uncirculated and one of the finest if not the finest known.*

\$3,000

In a slab by PCGS as MS65RB.



1500\*  
George V, 1923. *Good fine/nearly very fine.*

\$750



1505\*  
George V, 1933. *Glossy brown and red, uncirculated.*

\$200

In a slab by PCGS as MS63BN.

Ex Downies Sale with cut out of description stating it is a 1933/32 overdate (lot 1476).



1506\*  
**George VI, 1939, kangaroo reverse.** *Hint of mint red, extremely fine and rare thus.*

\$400

In a slab by PCGS as AU58.



1510\*  
**German New Guinea, silver one mark, 1894A.** *Good very fine.*

\$150

1511  
**German New Guinea, silver one mark, 1894A.** *Solder mount on obverse, otherwise very fine.*

\$50

## PAPUA NEW GUINEA



1507\*  
**German New Guinea, silver five mark, 1894A.** *Underlying brilliance toned with slight surface marks, otherwise extremely fine or better.*

\$7,500

From an old Sydney collection & Noble Numismatics Sale 127 (lot 478).



1508\*  
**German New Guinea, silver two mark, 1894A.** *Nearly uncirculated.*

\$900

In a slab by ANACS as MS61.



1509\*  
**German New Guinea, silver one mark, 1894A.** *Has been dipped of toning, otherwise good extremely fine.*

\$500

Ex J.L.Miller Collection & Noble Numismatics Sale 126 (lot 745).



1512\*  
**German New Guinea, silver half mark 1894A.** *Nearly uncirculated.*

\$750

Ex J.L.Miller Collection & Noble Numismatics Sale 126 (lot 746).



1513\*  
**German New Guinea, ten pfennig, 1894A.** *Some original mint red, dull brown toning, nearly uncirculated.*

\$300

Ex J.L.Miller Collection & Noble Numismatics Sale 126 (lot 748).



1514\*  
**German New Guinea, ten pfennig, 1894A.** *Underlying bluish mint bloom, brown patina, good extremely fine or nearly uncirculated.*

\$250

Ex J.L.Miller Collection & Noble Numismatics Sale 126 (lot 747).



1515\*  
**German New Guinea**, ten pfennig, 1894A. *Brown and red nearly uncirculated.*

\$200



1516\*  
**German New Guinea**, two pfennig, 1894A. *Hints of red, good extremely fine or nearly uncirculated.*

\$300

Ex J.L.Miller Collection & Noble Numismatics Sale 126 (lot 749).



1517\*  
**German New Guinea**, one pfennig, 1894A. *Red and brown, nearly uncirculated.*

\$200

Ex J.L.Miller Collection & Noble Numismatics Sale 126 (lot 750).

1518  
**German New Guinea**, embossed post card of the nine coins, twenty mark to one pfennig, 1894-5, with the national flag. *Extremely fine.*

\$100



1519\*  
**Territory of New Guinea**, George V, Melbourne Mint specimen penny, 1929, in cupro-nickel. *Lightly toned, FDC and rare.*

\$1,000

In a slab by NGC as PF 65 & Noble Numismatics Sale 129 (lot 632).

1520  
**Territory of New Guinea**, type set, containing, pennies, 1936, 1938, 1944; threepences, 1935, 1944; sixpences, 1935, 1943; shillings, 1935, 1936, 1938, 1945. *In a Dansco album, fine - extremely fine.* (11)

\$40



1521\*  
**Territory of New Guinea**, Head Tax token, 1936-1937, ten shillings (type III) (Mira p311), in aluminium (34mm), plain reverse, holed at top edge. *Good very fine.*

\$80



1522\*  
**Papua New Guinea**, proof .900 fine gold one hundred kina, 1975 (KM.9) (AGW = 8.61 g). *FDC.*

\$650

1523  
**Papua New Guinea**, proof gold one hundred kina, 1975FM (KM.9) (AGW=8.61g). *In case of issue, with certificate, FDC.*

\$550



1524\*  
**Papua New Guinea**, proof .900 fine gold one hundred kina, 1976 (KM.10) (AGW = 8.61 g). *FDC.*

\$650

1525  
**Papua New Guinea**, proof .900 fine gold one hundred kina, 1977 (KM.12) (AGW = 8.61 g). *FDC.*

\$650

## NEW ZEALAND



1526\*  
George VI, florin, 1940. *Good extremely fine.*

\$60

Ex I.S.Wright Sale 255 (lot 8055).



1527\*  
George VI, shilling, 1942, broken back variety. *Lightly toned, rim nick on reverse at 12 O'Clock, nearly uncirculated and scarce thus.*

\$200

Ex I.S.Wright Sale 255 (lot 8060).



1528\*  
George VI, sixpence, 1943. *Spotted obverse, full original mint bloom, uncirculated.*

\$100

Private purchase from M.R.Roberts with their ticket.



1529\*  
George VI, threepence, 1941. *Tiny obverse rim nick at 9 O'Clock, otherwise uncirculated and scarce thus.*

\$300

Private purchase from M.R.Roberts with their ticket.



1530\*  
Elizabeth II, sixpence 1965, twenty percent or partial obverse brockage (2.9g). *Good very fine and very rare.*

\$200

Private purchase from M.R.Roberts with their ticket and a normal 1965 sixpence.

1531  
Elizabeth II, halfcrowns, 1962. All treated to give a gold like colour. *Very fine.* (approx 3.80 kg)

\$60

1532  
Elizabeth II, two cents (1967) reverse muled with Bahamas obverse, with normal 1967 two cents and Bahamas, five cents 1966. *Toned extremely fine.* (3)

\$50

1533  
Elizabeth II, two cents (1967), Bahamas obverse mule. *Uncirculated.*

\$80

1534  
Elizabeth II, mint sets, pre decimal, 1965 (20); decimals, 1968 (2), 1969, 1971 (3), 1972 (2), 1973 (2), 1974 (3), 1976, 1977, 1978, 1979, 1980. *Uncirculated.* (37)

\$250

1535  
Elizabeth II, mint sets, 1990 (27); Kiwi dollars collections, each containing mint one and two dollars, 1990 and one and two dollar banknotes (7 sets). *Uncirculated.* (34)

\$400

1536  
Elizabeth II, proof sets, 1978, 1979, 1980, 1981, 1982, 1983, 1984, 1985, 1986; mint sets, 1978, 1979 (2), 1980, 1981, 1982, 1983, 1986, 1990; proof silver dollars, 1981, 1982, 1983. *Uncirculated - FDC.* (21)

\$250

1537  
New Zealand, proof silver dollars, 1974 (3), 1978 (2), 1979 (3), 1981 (4), 1982, 1983 (2). *FDC.* (15)

\$400

1538  
Elizabeth II, proof sterling silver one dollars, six coin set, 2003, Lord Of The Rings, Scenes in Silver (28.28 g each). *FDC.*

\$180

Ex Chris Hall Collection.

1539  
Elizabeth II, proof .916 fine gold ten dollars, 2003, (39.94 g) Lord of The Rings commemorative. *FDC.*

\$2,900

Ex Chris Hall Collection.

1540  
Elizabeth II, mixed dates mint cupro-nickel commemorative dollars. *All in perspex holders and in three purpose made wooden storage containers, uncirculated.* (approx 150)

\$150

1541  
Elizabeth II, mint cupro-nickel commemoratives, crown, 1953 dollars, 1969 (23), 1970, 1982 (2); mint set, 1967, proof set, 1984; Austria, proof sets, 1966, 1967 (2); Cook Islands, dollar, 1970, mint .500 fine silver five dollars, 1976; Great Britain, commemorative crown, 1953, mint set, 1953, 1983; Japan, mint set (year [?]); Tonga, mint set, 1967. *Uncirculated - FDC.* (38)

\$80

1542  
George V - George VI, mixed dates threepences - halfcrowns.  
All circulated, very good - very fine. (approx 1.78 kg) \$800

1543  
George V - Elizabeth II, mixed dates halfpennies, pennies,  
threepences, sixpences, shillings, halfcrowns, one and two  
cents, all non silver, in clip seal plastic bags by denomination.  
Very good - nearly uncirculated. (approx 7.30kg) \$120

1544  
George V - Elizabeth II, 1933-1965, crowns to halfpennies in  
four press-in albums, complete except for the 1935 Waitangi  
crown, plus three press-in albums of Australian, decimals one  
to fifty cents. Very good-nearly uncirculated. (approx 350)  
\$350

1545  
George V, silver threepence, 1935; George VI - Elizabeth  
II, cupro-nickel threepences (26) sixpence (4) British (4),  
Rhodesia and Nyasaland threepence 1961. Fine-good  
extremely fine. (36) \$100

1546  
George V - Elizabeth II, 1933-1976, silver shillings to  
threepences described in 2x2 holders, halfpennies on one  
sheet. Very good-uncirculated. (13) \$50

1547  
George VI - Elizabeth II, mixed dates threepences (approx  
175 g); New Zealand, threepences, 1933 (10), 1934 (10)  
1937 (10), 1939 (10) 1940 (10), 1941 (10) 1942 (10) 1943  
(10), 1944 (10), 1946 (10), the New Zealand coins are  
in individual paper envelopes by year and at the time of  
cataloguing not seen. Very good - extremely fine. (lot)  
\$150

1548  
George VI, crowns, 1949 (2); crowns, two coin set, 1949 &  
1953; pennies, 1964 (20); proof set, 1967; Austria, mixed  
dates, 1950's-70's twenty five schillings (9); Canada, mint set,  
1964; Cyprus, mint set, 1963; Isle of Man, commemorative  
proof silver crown, 1979. Uncirculated - FDC. (36) \$150

1549  
Elizabeth II, proof set, 1975; mint sets, 1967 (without wallet)  
1969, 1983; commemorative coin sets, 1969 Captain Cook  
(2); 1970 Royal Visit; souvenir coin album, 1967 first and  
last currency issue; proof one dollar, 1979; mint one dollar,  
1969 (2); together with Otago Centennial medal, 1948, in  
bronze (51mm). Sets and proof one dollar in cases or packs  
of issue, good - FDC. (12) \$100



1550\*  
New Zealand AAA, in silver (31mm) Dunedin, March 1924,  
'Putting/Shot/Championship/C.E.Low/200. ' Extremely  
fine. \$50



1551\*  
Kia Ora, New Zealand, sterling silver medalet, rev.  
inscribed 'John Edward/Hughes/14 Owen St./Napier/Born  
NZ.Sept.1st/1876. ' Toned good very fine. \$50

1552  
United Fire Brigades Association, Long Service Medal for  
five years, 'Fireman/J.Gamble/by the/Greymouth/Borough  
Council/Nov 1900'. In case of issue, good extremely fine.  
\$440



1553\*  
United Fire Brigades Association, Long Service Medal for five  
years plus four 2 years service clasps, ' Fireman/J.Osborne/  
by/Feilding F.Board/10.12.27'. Nearly extremely fine. \$480

1554  
Commemorative medallions, New Zealand (6), two in silver  
one for Introduction of Decimal Currency, 1967, by The  
Auckland Coin Club another for the City of Auckland  
Centennial, 1971; Canada (2). Uncirculated. (8) \$60

1555  
Commemorative Medallions, Last Steam Locomotive in The  
North Island, in silver; Woodville Centenary commemorative  
1875 - 1975, in silver and copper; Waikato County Council  
Centenary commemorative, 1876 - 1976, in silver. On cards  
with related information, uncirculated. (4) \$60