

GREAT BRITAIN SILVER & BRONZE



2467\*  
George IV, silver halfcrown, 1820 (S.3807) and 1823 (S.3808). *Nearly extremely fine; toned good very fine.* (2)  
\$450

Ex Alan J. Hanneman Collection



2468\*  
George IV, silver shillings, 1821 (S.3810), 1824 (S.3811) and 1825 (S.3812). *Scratches on neck, toned and extremely fine; reverse toned very fine; attractively toned extremely fine.* (3)

\$500

Ex Alan J. Hanneman Collection



part

2469\*  
George IV, silver sixpences, 1821 (S.3813), 1824 (S.3814), and 1826 (S.3815). *Slight cleaning, otherwise extremely fine to good extremely fine.* (3)

\$450

Ex Alan J. Hanneman Collection.



2470\*  
George IV, first issue copper farthings, legends poorly struck from die filling on both, 1822 (S.3822; Peck 1411). *Underlying mint bloom, nearly uncirculated.* (2)

\$120

In slabs by NGC as MS64BN.

Ex Alan J. Hanneman Collection.



2471\*  
George IV, first copper issue, farthing, 1823, I for 1 in date (S.3822; Peck 1413). *Extremely fine and rare.*

\$200

Ex Alan J. Hanneman Collection.



2472\*  
George IV, first copper issue, farthing 1825, D over U in DEI (S.3882; Peck 1414 variety not listed in Peck). *Very fine and rare.*

\$100

Ex Alan J. Hanneman Collection.



2473\*  
George IV, first copper issue, farthings, 1826 R over E in GRATIA (S.3822; Peck 1416 variety not listed in Peck). *Very fine and rare.*

\$100

Ex Alan J. Hanneman Collection.



2474\*  
**George IV**, second copper issue, farthing, 1826 (S.3825; Peck 1439). *Blue brown patina, well struck, good extremely fine.*

\$80

Ex Alan J. Hanneman Collection.



2475\*  
**George IV**, second issue copper farthings, 1826 (Peck 1439) and 1827 (Peck 1442)(S.3825). *Brown and red, nearly uncirculated. (2)*

\$200

In slabs by NGC as MS62BN.

Ex Alan J. Hanneman Collection



2476\*  
**George IV**, second copper issue, farthing, 1829 (S.3825; Peck 1444). *Hints of original colour, extremely fine.*

\$100

Ex Alan J. Hanneman Collection.



2477\*  
**George IV**, copper half farthing, 1828 (for use in Ceylon), helmet to the base of legend (S.3826). *Good extremely fine and rare.*

\$150

Ex Dr G.C.Shortland Collection & Noble Numismatics Sale 129 (lot 1746).



2478\*  
**George IV**, copper third farthing (for use in Malta), 1827 (S.3827). *Toned extremely fine.*

\$100

Ex Dr G.C.Shortland Collection & Noble Numismatics Sale 129 (lot 1747).



2479\*  
**George IV - Queen Victoria**, third farthings, 1827, 1835, and 1844 (S.3827, 3850, 3952); quarter farthing 1839 (S.3953). *The third red and brown uncirculated and scarce thus, others extremely fine - good extremely fine. (4)*

\$450

Ex Alan J. Hanneman Collection.

2480  
**George IV**, young head to Elizabeth II, balance of the collection of farthings, each coin described neatly in 2x2 holders housed in deluxe Lighthouse album with slip case, 1821-1956; 1821, 1822(2), 1823, 1825(4), 1826, 1826(2), 1828, 1830; 1831, 1834 to 37, 1838, 1839(2), 1840(3), 1842, 1843(2), 1845(2), 1847(2), 1848, 1849, 1850(2), 1853(2), 1854; 1853 to 59; 1860(4), 1861(2), 1862, 1864(2), 1865(2), 1866(2), 1867, 1868, 1872, 1873, 1874H, 1875, 1875H(2), 1878, 1879(2), 1880(2), 1881(2), 1881H(6), 1882H, 1884 to 88, 1890 to 92, 1893(2), 1894; 1895, 1896, 1897(5), 1898, 1899, 1900, 1901(2), 1902, 1903(2), 1904(2), 1905 to 09, 1909, 1910; 1911-1936(34); 1937-1952(20); 1953(5), 1954 (2), 1955, 1956. *Fine-uncirculated. (176)*

\$1,500

Ex Alan J. Hanneman Collection

2481  
**George IV - Elizabeth II**, duplicate farthings mostly recent and neatly described in 2x2 holders, 1826-1955 (includes 1953 proofs (2)) early dates 1826, 1834, 1836, 1841, 1843, 1858, also cut Henry III penny, farthings tokens Charles I (7). *Poor - FDC. (86)*

\$300

Ex Alan J. Hanneman Collection



2482\*  
**William IV**, silver shilling, 1834 (S3835). *Mirror-like fields, uncirculated.*

\$200



2483\*  
**William IV**, 1831 proof sixpence, (S-3836, ESC-2500, (R2), Davies-360), (2.82g), straight-grained edge. *Brown golden grey tone, nearly FDC/FDC and very rare.*

\$700

Ex S. A. Bole Collection, lot 1761, and Baldwins Summer list 2012.



2484\*  
**William IV**, copper farthing, 1831 (S.3848; Peck 1466). *Red and brown uncirculated.*

\$150

In a slab by NGC as MS63RB.

Ex Alan J. Hanneman Collection.



2485\*  
**William IV**, bronzed copper proof farthing, 1831 (S.3848; Peck 1467). *Nearly FDC and very rare.*

\$600

Ex Alan J. Hanneman Collection



2486\*  
**William IV**, bronzed copper proof farthing, 1831 (S.3848; Peck 1468). *Has been lacquered, otherwise good extremely fine/nearly FDC and scarce.*

\$300

Ex Alan J. Hanneman Collection.



2487\*  
**William IV**, bronzed proof copper farthing 1831, die axis en medaille (S.3848; Peck 1469). *Nearly FDC.*

\$600

In a slab by NGC as PF63BN.

Ex Alan J. Hanneman Collection.



2488\*  
**William IV**, copper farthing, 1837 (S.3848; Peck 1475). *A little spotted, glossy underlying mint bloom, good extremely fine.*

\$80

In a slab by NGC as AU58BN.

Ex Alan J. Hanneman Collection.



reduced

2489\*  
**William IV**, proof set case 1831, two sovereigns to farthing. *Very fine.*

\$320



2490\*  
**Queen Victoria**, young head, silver crown, 1844 (S.3882) star stops. *Obverse rim bruise at 11:30, otherwise nearly very fine.*

\$150



2491\*  
**Queen Victoria**, Godless silver florin, 1849 (S.3890); Gothic florin, 1886 (S.3900). *Good extremely fine.* (2)

\$500

Ex Alan J. Hanneman Collection



2492\*  
**Queen Victoria**, Gothic florin, 1872, die no 32 (S.3892); young head shilling, 1878, die no 69 (S.3906A). *Good very fine, the second scarce.* (2)

\$250

Ex D.Featherstone/L.McNaught Collection.



2493\*  
**Queen Victoria**, young head, proof shilling 1853, (S-3904, ESC-3003, Davies-867) (R2) (5.65g), straight-grained edge. *Medium grey semi brilliant proof, FDC and rare thus.*

\$1,700



2494\*  
**Queen Victoria**, young head, shillings, 1859 (S.3904), 1868, die no.30 (S.3906A) and 1884 (S.3907). *Good very fine; extremely fine; good extremely fine.* (3)

\$350

Ex Alan J. Hanneman Collection



2495\*  
**Queen Victoria**, young head, sixpence, 1887 (S.3912); bun head bronze halfpenny, 1860 beaded border (S.3956). *Toned good extremely fine; red uncirculated.* (2)

\$150

Ex Alan J. Hanneman Collection.



2496\*  
**Queen Victoria**, Jubilee coinage, silver crown, 1887, JEB close (S.3921). *Attractive blue grey iridescent tone, proof-like, nearly uncirculated.*

\$200

Ex Alan J. Hanneman Collection

2497  
**Queen Victoria**, Jubilee coinage, crown to threepence 1887 (S.3921/31). *In display case, good fine - good extremely fine.* (7)

\$120



2498\*  
**Queen Victoria**, Jubilee coinage, double florin, 1887 (S.3922). *Toned extremely fine/good extremely fine.*  
 \$150



2499\*  
**Queen Victoria**, Jubilee coinage, double florins, 1887 (S.3922,3). *Cleaned extremely fine/good extremely fine; proof-like uncirculated.* (2)  
 \$250

Ex Alan J. Hanneman Collection



2500\*  
**Queen Victoria**, Jubilee coinage, double florin, 1887, Arabic I (S.3923). *Mirrored fields, minor scuff marks, extremely fine.*  
 \$100



2501\*  
**Queen Victoria**, Jubilee coinage, silver halfcrown 1887 (S.3924). *Attractive tone, uncirculated.*  
 \$100



2502\*  
**Queen Victoria**, Jubilee coinage, proof florin 1887, (S.3925, ESC.2954, Davies 810?) (R) (11.22g), *Dark blue grey tone, minimal obverse hairlines, nearly FDC/FDC and rare.*  
 \$700



2503\*  
**Queen Victoria**, Jubilee coinage, florin 1887 (S.3925), threepence 1891 (S.3931); old head, florin, 1899 (S.3939). *Good extremely fine; very good; toned nearly extremely fine/extremely fine.* (3)  
 \$200

2504  
**Queen Victoria**, Jubilee coinage, threepences, 1887 (S.3931). *Extremely fine.* (7)  
 \$70



2505\*  
**Queen Victoria**, Jubilee coinage, proof threepence 1887, (S.3931, ESC.3437, Davies 1330 (Dies 1 A)) (S) (1.44g). *Dark blue grey toned, brilliant FDC and scarce.*  
 \$300

The above set and case from Noble Numismatics Sale 95 (lot 4898).



2506\*  
**Queen Victoria**, Jubilee coinage, proof threepence 1887, (S.3931, ESC.3437, Davies 1330?) (S) (1.42g). *Slightly concave, dark brilliant blue toning, brilliant FDC and scarce.*  
 \$280



2507\*  
**Queen Victoria**, old head, silver crown, 1897 LXI (S.3937).  
*Cleaned, extremely fine.*

\$300

Ex Alan J. Hanneman Collection



2508\*  
**Queen Victoria**, old head, proof threepence 1893, (S.3942, ESC.3445, Davies 1350 (Dies 2 A)) (S) (1.41g), plain edge.  
*Dark blue grey brilliance, FDC and scarce.*

\$220



2509\*  
**Queen Victoria**, old head, Maundy set, 1900 (S.3943).  
*Toned, nearly uncirculated. (4)*

\$150



2510\*  
**Queen Victoria**, young head, copper farthing, 1839 (S.3950; Peck 1554) two prong trident and top serif in B missing. *Two reverse die breaks, good extremely fine.*

\$100

Ex Alan J. Hanneman Collection.



2511\*  
**Queen Victoria**, young head, copper farthing, 1841, unbarred (or inverted V) A in GRATIA (S.3950; P.1560).  
*Glossy extremely fine and rare.*

\$100

Ex Alan J. Hanneman Collection.



2512\*  
**Queen Victoria**, young head, copper farthing, 1843 (S.3950; Peck 1563) unbarred second A in Britannia. *Red and brown uncirculated.*

\$100

Ex Alan J. Hanneman Collection.



2513\*  
**Queen Victoria**, young head, copper farthing, 1844 (S.3950; Peck 1565). *Very fine and rare, the key date in the series.*

\$200

Ex Alan J. Hanneman Collection.



2514\*  
**Queen Victoria**, young head, copper farthing, 1848 (S.3950; Peck 1569). *Red and brown uncirculated.*

\$150

Ex Alan J. Hanneman Collection



2515\*  
**Queen Victoria**, young head, copper farthing, 1849 (S.3950; Peck 1570) 4 re-entered. *Brown and red, nearly uncirculated and rare in this condition.*

\$400

Ex Alan J. Hanneman Collection.



2516\*  
**Queen Victoria**, young head, copper farthings, 1850 and 1851 (S.3950; Peck 1571, 2). *Brown and red nearly uncirculated; good extremely fine.* (2)

\$150

Ex Alan J. Hanneman Collection



2517\*  
**Queen Victoria**, young head, copper farthing, 1853 W.W. raised (S.3950; Peck 1575). *Glossy blue brown mint bloom, uncirculated.*

\$100

In a slab by NGC as MS64BN.

Ex Alan J. Hanneman Collection.



2518\*  
**Queen Victoria**, young head copper farthings, 1853/2 overdate (S.3950; Peck 1575, overdate not listed by Peck). *Even brown nearly extremely fine and rare.*

\$150

Ex Alan J. Hanneman Collection.



2519\*  
**Queen Victoria**, young head, copper farthing, 1854 (S.3950; Peck 1580). *Full glossy red brown mint bloom, red uncirculated.*

\$100

In a slab by NGC as MS63BN.

Ex Alan J. Hanneman Collection.



2520\*  
**Queen Victoria**, young head, copper farthing, 1855 W.W. raised (S.3950; Peck 1582). *Red and brown uncirculated.*

\$100

Ex Alan J. Hanneman Collection.



2521\*  
**Queen Victoria**, young head, copper farthing, 1856, R over E in Victoria (S.3950; Peck 1584). *Very fine and rare.*

\$80

Ex Alan J. Hanneman Collection.



2522\*  
**Queen Victoria**, copper quarter farthing (for use in Ceylon), 1852 (S.3953). *Die break rim through date, hints of red, good extremely fine.*

\$100

Ex Dr G.C.Shortland Collection & Noble Numismatics Sale 129 (lot 1762).



2523\*  
**Queen Victoria**, bun head, bronze farthing, 1860, toothed borders (S.3958; Peck 1858; F 499). *Red and brown uncirculated.*

\$100

Ex Alan J. Hanneman Collection.



2524\*  
**Queen Victoria**, bun head, bronze farthing, 1861, 4 berries (S.3958; Peck 1860; F.502). *Lightly toned red uncirculated.*

\$100

Ex Alan J. Hanneman Collection.



2525\*  
**Queen Victoria**, bun head bronze farthing, 1863 (S.3958; Peck 1867). *Brown patina, virtually extremely fine and rare.*

\$350

In a slab by NGC as AU53BN.

Ex Alan J. Hanneman Collection.



2529\*  
**Queen Victoria**, bun head, bronze farthings, 1874H (Peck 1887; F525) and 1875H (Peck 1892; F532) top dot only of colon (S.3959). *Mostly red uncirculated.* (2)

\$150

Ex Alan J. Hanneman Collection



2526\*  
**Queen Victoria**, bun head, bronze farthings, 1865/2 and 1865/3 overdates (S.3958; Peck 1822A, F 513). *Good very fine.* (2)

\$200

Ex Alan J. Hanneman Collection.



2530\*  
**Queen Victoria**, bun head bronze farthing, 1875H young features (S.3959). *Very fine and rare.*

\$200



2527\*  
**Queen Victoria**, bun head bronze farthing, 1869 (S.3958; Peck 1884). *Red and brown, nearly uncirculated and scarce thus.*

\$100

In a slab by PCGS as MS63RB.

Ex Alan J. Hanneman Collection



2531\*  
**Queen Victoria**, bun head, bronze farthings 1881H (S.3959; Peck 1904; F.548) H type A, another H type F. *Red uncirculated.* (2)

\$150

Ex Alan J. Hanneman Collection



2528\*  
**Queen Victoria**, bun head, bronze farthing, 1873 (S.3958; Peck 1886; F.524). *Full original mint red, choice uncirculated.*

\$200

Ex Alan J. Hanneman Collection.



2532\*  
**Queen Victoria**, bun head, bronze farthing, 1895 (S.3958; Peck 1925; F.570). *Good very fine and very scarce.*

\$100

Ex Alan J. Hanneman Collection





part

2533\*  
Queen Victoria - Edward VII, shillings 1900 and 1908; sixpences 1890, 1901, 1905. *Toned, very fine or better.* (5)  
\$150

2534  
Queen Victoria - Elizabeth II, Queen Victoria, double florin, 1887, 1888 (S.3923) (2); Elizabeth II, Alderney, two pounds, 1989 Royal Visit (KM.1); 1990 Queen Mother's birthday (KM.2); Guernsey, twenty five pence, 1972 (KM.26); Gibraltar, crowns, 1967, 1968, 1969, 1970 (KM.4)(4), 1980 (2)(KM.11,12), 1981 (KM.14); twenty five pence, 1971 (KM.5), 1977 (KM.10); Great Britain, crown, 1953 Coronation (S.4136); 1960 (S.4143); 1965 Churchill (S.4144) (2); 1972 (S.LL1); 1980 Queen Mother's birthday (S.LL3); 1981 (S.LL4) (4); Isle of Man, crowns, 1972 (KM.25), 1977 (KM.41,42); 1981 (3) (KM.77, 79, 82); virenum five pounds, 1981, 1984 (KM.88, 134); New Zealand, crown, 1949 Royal Visit (KM.22); also Samoa, one tala, 1978 Commonwealth Games (KM.30). *Some coins in plastic cases, nearly extremely fine - uncirculated.* (34)

\$150

Ex Malcolm C. Johnson Collection.



2535\*  
Edward VII, silver crown, 1902 (S.3978). *Small scratch in front of King's nose, otherwise good extremely fine.*

\$200



2536\*  
Edward VII, silver crown, 1902 (S.3978). *Extremely fine.*

\$200

Ex Alan J. Hanneman Collection



2537\*  
George V, specimen halfcrown to Maundy penny 1911, (S.4011, ESC.3710, Davies 166)1 (S) (14.09g) chamfered rim. *Choice toned FDC.* (8)

\$1,400



2538\*  
George V, fourth coinage, silver wreath crown, 1931 (S.4036). *Light grey tone, good extremely fine.*

\$400

Ex Alan J. Hanneman Collection

2539

**George V - Elizabeth II**, bronze farthings, 1919 (S.4060; Peck 2331, F.598); 1950 proof (S. 4119; Peck 2484, F.655); 1953 proof (S.4156; Peck 2522); 1956 (S.4159). *Uncirculated - FDC.* (4)

\$50

First three in slabs by NGC as MS63RD, PF65RD, PF65RD Cameo, last in NNC slab as MS66 red.

Ex Alan J. Hanneman Collection.

2540

**George VI**, Coronation, specimen silver and bronze fifteen coin set, 1937, crown to farthing including Maundy set (S.PS16), in official maroon presentation case, gold blocked on lid with Royal Cypher and Specimen Coins/1937, with Royal Mint logo on inside lid. *With some wear to corners of case, otherwise FDC.*

\$700

2541

**George VI**, Coronation, specimen silver and bronze fifteen coin set, 1937, crown to farthing including Maundy set (S.PS16), in official maroon presentation case, gold blocked on lid with Royal Cypher and Specimen Coins/1937, with Royal Mint logo on inside lid. *With some wear to corners of case, copper coins with light toning, otherwise FDC.*

\$700

Ex Malcolm C. Johnson Collection.



2542\*

**George VI**, proof set, Mid-Century, 1950, halfcrown to farthing, nine coin set (S.PS17). *In official red cardboard box with Royal Mint logo on outside of lid, some wear to box, silver coins with mark left by ribbon on obverse, otherwise FDC.*

\$250

Ex Malcolm C. Johnson Collection.

2543

**George VI - Elizabeth II**, 1937-1967, nickel brass threepences, complete date set with obverse. *Very good - extremely fine.* (32)

\$60

2544

**Elizabeth II**, proof sets, 1970, 1971 (2), 1974, 1975, 1976, 1980, 1981, 1982, 1983, 1984; mint set, 1984; mint coins, two pound, 1986 Commonwealth Games; 1989 two coin set; one pound, 1986 Northern Ireland; 1988; crowns, 1977 Jubilee (S.LL2) (silver proof); 1990 Queen Mother 90th Birthday; fifty pence, 1973; together with a small group of crown size commemorative medals, 1960 British Exhibition New York; 1970 S.S.Great Britain; 1977 Jubilee (2); 1986 Royal Wedding. *In cases or packs of issue, uncirculated - FDC.* (24)

\$150

Ex Malcolm C. Johnson Collection.

2545

**Elizabeth II**, proof sets, 1979 (2), 1980 (5), 1982 (6), 1983 (3), 1985-91. *Some outer boxes moisture affected, otherwise FDC.* (24)

\$250

2546

**Elizabeth II**, proof sets, 1979 (8), 1980 (11), 1983 (4), 1984-86. *FDC.* (26)

\$250

2547

**Elizabeth II**, proof sets, 1980, 1981, (both missing outer packaging), 1982, 1983, 1984, 1985, 1986, 1987, 1988; mint sets, 1970, 1972, 1973, 1974, 1975, 1976, 1977, 1978, 1979; coinage of Great Britain sets, halfpenny - half crown, 1966, 1967. *Uncirculated - FDC.* (20)

\$150

2548

**Elizabeth II**, proof sets, 1984 (2), 1985 (2), 1986, 1987. *FDC.* (6)

\$80

2549

**Elizabeth II**, mint sets, 1971 (20), 1972 (9), 1975 (5), 1977 (8). *Uncirculated.* (42)

\$300



part

2550\*

**Wales**, Anglesey token collection, pennies 1787 (19 different varieties), 1788 (22), 1789, 1790, 1791, each in 2x2 holder described with D.H. number, D.H.19 illus (with mint red) D.H.206 illus (nearly very fine), in binder album. *Very good - nearly uncirculated.* (44)

\$600

Ex Alan J. Hanneman Collection.



part

2551\*

Wales, Anglesey token collection, halfpennies 1788 (38), 1789 (7), 1791 (22), 1792 (2), 1793 (7), 1794 (4), 1795, undated; farthings 1788, 1793, each in 2x2 holder with D.H. numbers in binder album, D.H.277 (illus), 296 (illus), 391 (illus), 452 (illus). *Very good - extremely fine.* (84)

\$800

Ex Alan J. Hanneman Collection.



part

2552\*

18th and 19th Century tokens, includes non local halfpenny 1813 (Withers 1710)(5), Ireland halfpenny 1766 (contemporary counterfeit); Isle of Man halfpenny token 1830; New Brunswick penny currency 1854, St.Helena halfpenny 1821. *Very good-extremely fine.* (9)

\$120



2553\*

Scotland, Alexander III, (1249-1286), silver penny, second coinage, Class C, Berwick Mint?, mintmark cross potent, (1.25 g), obv. crowned head left, lis-tipped sceptre before, ALEXANDER DEI GRA around, rev. long cross pattee, mullet of six points in each angle, REX SCOTORVM around, (S.5054, SCBI 35). *Toned, some roughness, very fine.*

\$150

Ex S.J. Green Collection. Previously CNG Auction 382, lot 645. The Thomas Bentley Cederlind Collection. With tickets.



part

2554\*

Ireland, James II, civil war coinage, 1689-91, Gunmoney crown 1690 (S.6578), large halfcrowns Dec 1689 (S.6579H) Dec.1689, March 1690 (S6579M) indecipherable 1689; shillings Sepr 1689 (S.6581D), Oct.1689 (6581E). *Poor - nearly very fine.* (6)

\$120

2555

Ireland, James II, civil war coinage, Gunmoney, shillings, 1689, 1690 (S.6594); small sized halfcrown, 1690 (S.6580G) crown, 1690 (S.6578). *Very good - nearly fine.* (4)

\$100



2556\*

Ireland, George I, William Woods' halfpenny, 1723 (S.6601). *Even brown patina, nearly very fine.*

\$100



2557\*

Ireland, George III, Bank of Ireland, six shillings 1804, top leaf to upright of E (S.6615). *Six scratched out, otherwise toned good fine.*

\$200

With Hagley ticket.



2558\*

part

Ireland, early 19th century copper tokens, pennies (12), halfpennies (4) all attributed with Withers and Davis numbers dated 1814/1822 range, some with purchase sources. *Very good - good extremely fine.* (16)

\$400

Withers numbers are 1810, 15, 20, 36, 37, 45, 51, 62, 76a, 1915, 17, 42, 52, 2000, 5, 22.

2559

Isle of Man, Ships, Colonies & Commerce, halfpenny, 1815 (W.2095) in brass. *Nearly fine and extremely rare.*

\$180

Ex Malcolm C. Johnson Collection.



2560\*

Isle of Man, Douglas, Atlas Fire Insurance Co., copper halfpenny, 1811, the word Douglas under the figure of Atlas (Pridmore 60; Mackay 122). *Even dark grey brown very fine or better and excessively rare.*

\$400

Ex R.J. Ford (lot 235), W.J. Noble (lot 1970), Noble Numismatics Sale 124 (lot 2406) and Mark E. Freehill collections.



2561\*

Jersey, Guernsey and Alderney, penny, undated, Druid's head left/legend, by Halliday and Turnpenny (Davis 7; Pridmore 65; McC. T5). *Weakly struck in centre of the reverse, otherwise attractive medium to dark brown patina, good very fine and very rare.*

\$200

Ex H. Pegg (lot 13), W.J. Noble (Sale 58B, lot 1974), Noble Numismatics Sale 124 (lot 2433) and Mark E. Freehill collections.



2562\*

Jersey, Jersey Bank, penny, 1813, laureate and draped bust of George III to right by Halliday, rev. Commerce seated left (Davis 5; Pridmore 61; McC.T3). *Beautifully struck, proof-like with even brown patina and hints of red, virtually uncirculated and very rare, one of the finest known.*

\$1,000

Ex R.J.Ford (lot 313), W.J.Noble (Sale 58B, lot 1973), Noble Numismatics Sale 124 (lot 2431) and Mark E.Freehill collections.

2563

Channel Islands, Not Local copper penny, 1814 (W.1635). *Nearly fine and very rare.*

\$180

Ex Spink in 1979, W.J.Noble (Sale 61B, lot 1214), and Malcolm C.Johnson collections.

2564

Channel Islands, Alderney, Elizabeth II, proof silver two pounds, 1989 Royal Visit; 1992 40th Anniversary of Reign; proof silver one pound, 1993 Coronation Anniversary; Bailiwick of Guernsey, proof sets, 1956 (3), 1966, 1971 (2), 1979; mint set, 1992; mint two pounds, 1987 William the Conqueror; 1991 Henry II; proof silver twenty five pence, 1978 Royal Visit; 1977 Jubilee; souvenir set of new coinage minted and issued 7th July 1956, mounted on card from the White Castle Guest House; Liberation Cavalcade medallion 1985. *In cases or packs of issue, some linings in cases stained, uncirculated - FDC.* (17)

\$120

Ex Malcolm C.Johnson Collection.

2565

Jersey, Bailiwick of Jersey, Elizabeth II, proof sets, 1957, 1960, 1964 (3), 1966 (2), 1981; crown, 1966, two coin set; mint set, 1992; proof silver two pound, 1990, Battle of Britain anniversary; proof silver crown, 1977, Jubilee; mint one pound, 1984 (2), 1987; coloured fifty pence, 2011, Diamond Jubilee; five pence, 1990 (9); together with Isle of Man, proof set, 1971; one pound, 1979; Lundy Island, 40th year commemorative, half puffin, one puffin, 1965, four coin set; Channel Islands, 50th anniversary Liberation, 1995, enamelled medal; Great Britain, patina crowns (2) Edward VIII, 1936. *Most in cases or packs of issue, inside lining of some sets stained, extremely fine - FDC.* (31)

\$120

Ex Malcolm C.Johnson Collection.



2566\*

Lundy Island, Martin Coles Harman, puffin and half puffin, 1929 (S.7850,1). *Dark toned good extremely fine.* (2)

\$70

Ex D. Featherstone/ L. McNaught Collection



2567\*

Lundy Island, Martin Coles Harman, one puffin and half puffin, 1929 (S.7850,1). *Extremely fine; red uncirculated.* (2)

\$50



2568\*

Anglo Gallic, Henry VI, (1422-1449), silver grand blanc aux ecu, Rouen Mint, mintmark leopard, (3.26 g), obv. shield of France and English Royal Arms, hERICVS above with abbreviation mark over E, beaded borders, initial mark leopard, FRANCORVM: ET: ANGLIE: REX, around, rev. Latin cross, lis to left, lion to right, hERICVS below with abbreviation mark over hE, beaded borders, initial mark leopard, SIT: NOMEN: DNL: BENEDICTV around, (S.8166, Elias 287). *Toned, nearly very fine.*

\$400

Ex S.J. Green Collection. Previously Dix Noonan Webb Auction 174, lot 118. The Antony Scammell Collection of British Coins. With tickets.

GREAT BRITAIN GOLD COINS



2569\*

Celtic Britain, uninscribed base gold stater (5.52g), Norfolk wolf type (c65-45BC), obv. abstracted head of Apollo right, rev. crude wolf to left (S.31, Van A. 610-3; ABC 1396-9). *Chipped on edge, otherwise good fine/good very fine and very rare.*

\$500

Ex CNA Sale IC 12/7/89, lot 209 with their ticket and Noble Numismatics Sales 44 (lot 1301), 47 (lot 2391) & 124 (lot 2516).



2570\*

Edward III, (1327-1377) fourth coinage, 1351-77, noble, Treaty period 1361-69, mm cross potent, saltire before Edward (7.73g, 34mm)(S.1502). *Well struck full coin, extremely fine and rare thus.*

\$5,000

Ex Chris Hall Collection, from Noble Numismatics Sale 101 (lot 1868).



2571\*

Edward III, (1327-1377), fourth coinage, half noble, Post-treaty period, (1369-1377), London Mint, mm cross potent, (3.64 g), (S.1523, N.1282). *Creased and clipped, some scratches, good.*

\$400

Ex S.J.Green Collection. Previously Downies Australian Coin Auctions 310 Lot 575. With tickets.



2572\*

**James I**, (1603-1625) second coinage 1604-19, unite, fourth bust, mm rose 1605-6 (9.96g)(S.2619). *Flattened area at 3, otherwise well struck nearly extremely fine.*

\$4,000

Ex Chris Hall Collection, from Noble Numismatics Sale 122 (lot 2636). The Mark E. Frechill Collection.



2573\*

**James I**, (1603-1625) second coinage 1604-19, unite, fourth bust mm tun over cinquefoil/cinquefoil, 1613-15 (S.2619). *A full coin slight creasing, old tone otherwise very fine and rare, housed in a Thompsons Seal Engravers No 37 Cheapside in turned timber box (c 1780s).*

\$2,500



2575\*

**William III**, guinea, second bust, 1701 (S.3463). *Considerable mint bloom, nearly uncirculated and rare in this condition.*

\$5,000

Ex Chris Hall Collection, from Noble Numismatics Sale 121 (lot 1735).



2574\*

**James I**, (1603-1625) second coinage 1604-19, double crown, fifth bust mm cinquefoil, 1613-15 (S.2623). *Slight bend, otherwise good very fine and rare as such.*

\$2,000



2576\*

**George I**, guinea, fifth bust, 1726 (S.3633). *Very fine or a little better.*

\$1,500

Ex Chris Hall Collection, from Noble Numismatics Sale 102 (lot 1691).



2577\*

**George I**, half guinea, first laureate head, 1718 (S.3635). *Surface marks, otherwise nearly very fine.*

\$900

Ex Alan J. Hanneman Collection



2578\*  
**George II**, two guineas, intermediate laureate head left, 1739 (16.69g)(S.3668). *Nearly uncirculated.*

\$4,000

Ex Chris Hall Collection, from Roxbury's Sale 24/5/13 (lot 778).



2579\*  
**George III**, guinea, fifth bust or spade type, 1798 (S.3729). *Nearly uncirculated.*

\$1,500

Ex Chris Hall Collection, from Noble Numismatics Sale 102 (lot 1306).

2580  
**George III**, Guinea, fifth bust or spade type, 1798 (S.3729). *Set with ornate scroll mount at top, very good/fine.*

\$650



2581\*  
**George III**, half guinea, fifth bust or spade type, 1793 (S.3735). *Good extremely fine.*

\$750

Ex Chris Hall Collection, for Roxbury's Sale 8/4/14 (lot 947).



2582\*  
**George III**, half guinea, sixth head, 1802 (S.3736). *Mark on neck, extremely fine/good extremely fine.*

\$850

Ex Noble Numismatics Sale 123 (lot 1985).



2583\*  
**George III**, third guinea, first laureate head right, 1798 (S.3738). *Punch mark on left reverse, otherwise fine.*

\$200

Ex Noble Numismatics Sale 123 (lot 1986).



2584\*  
**George III**, third guinea, first laureate head right, 1799 (S.3738). *Cleaned very fine, the rarest date for type by far.*

\$500

Ex Noble Numismatics Sale 128 687 (lot 687).



2585\*  
**George III**, third guinea, second laureate head right, 1810 (S.3740). *Nearly extremely fine.*

\$500

Ex Alan J. Hanneman Collection



2586\*  
**George III**, quarter guinea, 1762 (S.3741). *Very fine.*

\$400

Ex Noble Numismatics Sale 128 (lot 690).



2587\*  
**George III**, quarter guinea, 1762 (S.3741). *Traces of mounting, porous surface, otherwise good very fine.*

\$350

Ex Alan J. Hanneman Collection



2588\*  
**George IV**, large bare head, two pounds, reverse, St. George, 1823 (S.3798). *Toned good very fine.*

\$5,000

Ex Noble Numismatics Sale 127 (lot 4019).





2589\*  
**George IV**, bare head sovereign, 1826 (S.3801). *Reverse with brilliance, nearly uncirculated.*

\$4,000

Ex W.H.Nicholas Collection, from Spink Australia Sale 5 (lot 355) and Noble Numismatics Sale 127 (lot 4021).

2590  
**Queen Victoria**, young head, half sovereign, 1852 (S.3859). *Scratches and surface marks, otherwise very fine.*

\$250

2591  
**Queen Victoria**, young head, sovereign, 1853 (S.3852C). *Edge cuts and scratches and nick in Queen's chin, otherwise good very fine.*

\$500

2592  
**Queen Victoria**, young head, half sovereigns, 1856, 1858 (S.3859) and 1860 (S.3859A). *Good-very good.* (3)

\$900



2593\*  
**Queen Victoria**, young head, half sovereigns, 1865 die no. 15 (S.3860), 1885 (S.3861). *Very good; fine.* (2)

\$650



2594\*  
**Queen Victoria**, young head, half sovereign, 1869, die no. 20 (S.3860). *Obverse polished and surface marks, otherwise extremely fine/good extremely fine.*

\$500

Ex Alan J. Hanneman Collection

2595  
**Queen Victoria**, young head, half sovereign, 1885 (S.3861). *Very fine.*

\$350



2596\*  
**Queen Victoria**, Jubilee coinage, two pounds, 1887 (S.3865). *Has been brooch mounted still with a loop mount on top, otherwise very fine.*

\$1,400

2597  
**Queen Victoria**, Jubilee coinage, sovereign 1890 (S.3866B); old head, sovereign 1900 (S.3874). *Good very fine.* (2)

\$1,250

Ex John Kennedy McLaughlin Collection.

2598  
**Queen Victoria**, sovereigns, 1892 (S.3866C), 1893, 1900(2)(S.3874). *Fine-very fine.* (4)

\$2,500



2599\*  
**Queen Victoria**, Jubilee coinage, half sovereign 1887 (S.3869). *Nearly uncirculated.*

\$350

Ex Alan J. Hanneman Collection

2600  
**Queen Victoria**, Jubilee coinage, half sovereign, 1892 (2) (S.3869D); Edward VII, half sovereign, 1907 (S.3969). *Fine - very fine.* (3)

\$850



part

2601\*  
Queen Victoria, old head, half sovereigns 1894, 1898, 1899 (S.3874). *Nearly very fine.* (3)

\$1,000

2602  
Queen Victoria, old head, half sovereign, 1897 (S.3878). *Very good/fine.*

\$300

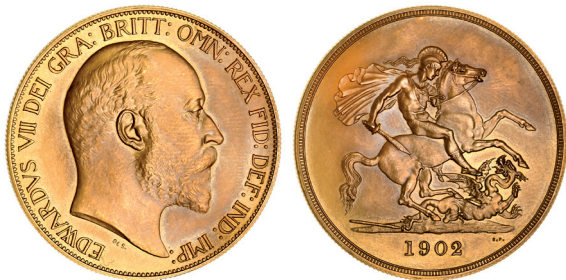


part

2603\*  
Queen Victoria, old head, half sovereign, 1899 (S.3878); George V, half sovereign 1912 (S.4006). *Extremely fine.* (2)

\$650

Ex Alan J. Hanneman Collection



2604\*  
Edward VII, matte proof five pounds, 1902, low rim (S.3965)(39.88g). *Has been rubbed giving it a coppery tone, nearly FDC.*

\$7,000

Ex Verene Collection (Sale 130B, lot 2699).

2605  
Edward VII, sovereign, 1910 (S.3969). *Very fine.*

\$600

2606  
Edward VII, half sovereigns, 1902(2)(S.3974A), 1905, 1907 (S.3974B). *Fine - very fine.* (4)

\$1,250

2607  
George V, sovereigns, 1912(3) and 1914 (S.3996). *First two jeweller's copies, very fine - nearly extremely fine.* (4)

\$2,400

2608  
George V, sovereign, 1913 (S.3996); Elizabeth II, sovereign, 1958 (S.4125). *Uncirculated.* (2)

\$1,200

Ex Alan J. Hanneman Collection



2609\*  
George V, half sovereign, 1911 (S.4006). *Good very fine.* \$250



2610\*  
Elizabeth II, sovereign, 1957 (S.4124), first year of issue. *Nearly uncirculated.* \$700



2611\*  
Elizabeth II, sovereign, 1959 (S.4125). *Toned uncirculated.* \$600

2612  
Elizabeth II, sovereigns, 1959, 1963 and 1965 (2) (S.4125). *Rim nick on the 1963, otherwise uncirculated.* (4) \$2,500



part

2613\*  
Elizabeth II, sovereigns, 1959, 1963, 1965, 1966 and 1967 (S.4125). *Uncirculated.* (5) \$3,000



part

2614\*  
Elizabeth II, proof gold four coin set, 1989, 500th Anniversary of the First Gold Sovereign (S.PGS10) consisting of five and two pounds, sovereign and half sovereign. *In case of issue with certificate numbered 4379, FDC.* \$6,000

Together with book 'Royal Sovereign 1489-1989', edited by G.P.Dyer, Royal Mint Librarian and Curator, hardbound, 99pps, published to coincide with the 500th anniversary of the sovereign.

2615  
**Elizabeth II**, proof sovereign, 1980 (S.SC1). *In case of issue, FDC.*

\$650

Ex John Kennedy McLaughlin Collection.

2616  
**Elizabeth II**, proof sovereign and half sovereign, 1980 (S.SC1,SB1). *In cases of issue, FDC. (2)*

\$900



2617\*  
**Elizabeth II**, sovereign, 1981 (S.SC1). *Nearly uncirculated.*

\$600

2618  
**Elizabeth II**, sovereign and half sovereign, 2000 (S.SC4, SB4). *Uncirculated. (2)*

\$900

2619  
**Elizabeth II**, sovereign and half sovereign, 2000 (S.SC4, SB4). *Uncirculated. (2)*

\$900



2620\*  
**Elizabeth II**, proof quarter ounce gold Britannia, 2007 (S.BO9). *FDC.*

\$600

2621  
**Elizabeth II**, proof one quarter sovereign, 2013 (1.99 g). *FDC.*

\$140

Ex Chris Hall Collection

## GREAT BRITAIN - HISTORICAL MEDALS

2622  
**Engraved shaved down halfpenny**, as advertising token, 'Sarah/Hurst/1762' reverse a shoe. *Fine.*

\$40



2623\*  
**George III**, shaved down reverse of 1797 penny, ornately engraved 'Thomas Nesbit Born July 4th/1798/Hayes/Kent'. *Nearly very fine.*

\$50

2624  
**Assorted medallions and medalets**, 1849-1977, in various metals, includes Leander medal, undated and uninscribed; Opening of the new Coal Exchange, 1849, in white metal; Alexander Palace, 1875, in white metal (51mm) (Eimer 1651); Edward VII, calendar medal, 1907-1927, in aluminium; Coronation, 1902; Peace, undated (WWI) (2); British Empire Exhibition, 1924, in bronze; Jubilee, 1935, in silver; National Rose Society, in silver, awarded to J.S.Gall/1936; Edward VIII, in bronze; Charles, Prince of Wales, 1969 (2) bronze and white metal; Jubilee Exhibition London, 1977; Duckhams, 1977; together with souvenir medallions, Stonehenge, in nickel silver; Tower of London, in bronze; Windsor Castle, EIRR Jubilee, 1977, in nickel silver; Isle of Man, James Mackay, 1977; Post Office Tower; Birmingham Mint, undated. *Some in cases as issued, fine - nearly uncirculated. (21)*

\$120

Ex Malcolm C. Johnson Collection



2625\*  
**St Paul's School**, Founded by John Colet, 1851, in gilt (44mm), by L.C.Wyon, obverse bust of John Colet left, reverse, 8-lines of Latin text referencing Baron Truro, the Lord High Chancellor of Great Britain, who was a pupil at St Paul's School. *Edge nicks and marks on the rim where the medal appears to have been in a circular mount, otherwise very fine.*

\$30

2626

Historical medals, Prince Albert, International Exhibition, 1862 commemorative, in aluminium [?]; The Shiprecked Fisherman and Mariners Society commemorative, 1885, in base metal; Crown Prince of Orange, Hollands Glory, reverse, Waterloo June 18 1815 within wreath (BHM.875); Baden Powell commemorative (32 mm), in silver; Henry Brougham, Electoral Candidate, 1818, in silver (36mm), by Mills, (BHM 979, Eimer 1106); The Sadler's Company London, commemorative, in white metal. *Fine - nearly extremely fine.* (6)

\$100

2627

Banksian Medals, The Royal Horticultural Society, in silver (37mm) 'Charles Stuart, Dalton in Furness August 1884'; in bronze 'Mr H.Hopkins, Carshalton Park 1896'. *Extremely fine.* (2)

\$40

2628

Commemorative medals, a small selection, noted, International Health Exhibition, London, 1884, in bronze, 45 mm, by L.C. Wyon, in case (E.1704); Cambridge University, 1920, silver medal, 40mm, Lewis Gun Team/G.W. Langhorne/1920, by Munsey; others in base metal (3). *Fine - extremely fine.* (5)

\$80



lot 2629 part

2629\*

Western Counties Exhibition, Plymouth, 1890 in gilt bronze (55mm) by J.A.Restall (cased); The Long Faced Tumbler Club, Birmingham 1886 in silver (39mm) by J.A.Restall, Poultry Club Medal in silver (39mm) by J.A.Restall. *Good extremely fine.* (3)

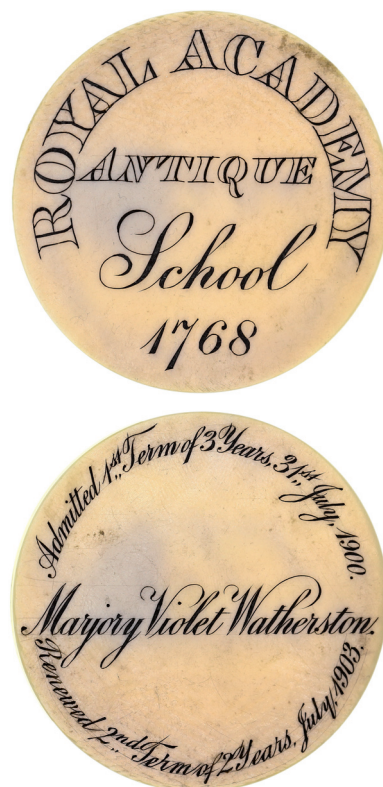
\$60



2630\*

Queen Victoria's Golden Jubilee, 1887, Masonic jewel in silver, gilt and enamel, type with Queen wearing St Edward's crown, on the reverse of the star is inscribed with the initials, 'G. K.', incorrect ribbon. *Very fine.*

\$80



lot 2631

2631\*

**Royal Academy Antique School 1768**, student's admission token in ivory for Marjory Violet Watherston, Admitted 1st Term of 3 Years, 31st July, 1900 and Renewed 2nd Term of 2 Years, July, 1903. *Good very fine.*

\$150

Miss Marjory Violet Watherston, 1882-1969, was a Royal Academy School student from 31 July 1900 to July 1905. She was a painter in various media of landscapes, figures and portraits. She studied art in Paris and at the Royal Academy School. She was the sister of another artist, Evelyn Watherston. Her works have exhibited widely and the Imperial War Museum holds one of her works, *The Dispatch: The Captain's Dugout*, depicting a WWI war scene. Her father was a London jeweller and holder of a Royal Warrant for service to the royal family.

See also lot 4146.



2632\*

**Mercers' School Games Club medal**, undated, in silver (51mm), obverse, school shield, reverse, elaborate design with school's name around the outside and in the centre is part engraved, '(To)/G.Thomas/(For)/Life-Saving', edge impressed, 'Presented By The Rev. P. Clementi-Smith.'. *Surface marks, otherwise very fine.*

\$150

With research.

2633\*

**City and Guilds of London, Department of Technology**, 1st Prize medal, in silver, by John Pinches edge impressed: 1st Prize 1913. Sidney Young. Mechanical Engineering (Machine Designing). *In original case, toned, uncirculated.*

\$100

2634

**RNLI (Royal National Lifeboat Institute)**, Ladies Life Boat Guild badge (KC), in gilt and enamel (31x30mm), pin-back; another identical but with ring top suspension, with ribbon and Committee pin-back suspension bar. *Extremely fine.* (2)

\$50

With research.

2635

**British Red Cross Society**, badge in gilt and enamel, by J.R.Gaunt, London, with ring top suspension and with Cambridgeshire And Isle of Ely pin-back top suspender. *Very fine.*

\$50

2636

**British Red Cross Society Medal**, with Proficiency In Red Cross First-Aid pin-back top clasp, with 1 Year clasp; Proficiency In Anti-Gas Training pin-back top clasp; Red Cross Nursing 1932 clasp, medal unnamed. *Very fine - extremely fine.* (7)

\$60

2637

**British Red Cross Society Medal**, with Proficiency in Red Cross Nursing pin-back clasp, inscribed on reverse 50339 E.A.Shaw. *Good very fine.*

\$50

2638

British Red Cross Society Medal, with Proficiency in Red Cross Nursing pin-back top clasp; British Red Cross Society 3 Years Service Medal, with pin-back suspender, reverse numbered 207710; British Red Cross Society 10 Year Service badge (KC), in gilt and enamel, by J.R.Gaunt, London, pin-back, reverse inscribed, '277./C.Smith'; British Red Cross Society, Honorary Life Member badge (KC), in gilt and enamel, by J.R.Gaunt, London, pin-back, reverse numbered 1712. *Very fine - extremely fine.* (4)

\$80

2639

British Red Cross Society 3 Years Service Medal, in gilt and enamel (KC) with three 3 Years Service clasps, with pin-back suspender bar, reverse numbered 31270. *Medal toned, very fine, clasps and suspender extremely fine.*

\$50



2640\*

British Red Cross Society Medal, with Medical Officer clasp, inscribed on reverse 424 Dr. A.B.Waller. *Ribbon aged, otherwise very fine and scarce issue to a doctor.*

\$200



2641\*

Royal Medico-Psychological Association Medal, For Proficiency In Mental Nursing, in oxidised bronze, reverse inscribed 'E.F.Bunnell'. *Extremely fine.*

\$60



2642\*

Herts County Council Nursing Service Medal, in silver (32.5mm), with pin-back suspender, obverse, heart with lighted lamp in centre and flowers at side, reverse, coat-of-arms and around the top, 'Hertfordshire County Council', below the arms, (Awarded To) and inscribed, 'Ethel Eleanor/Saunders/1918-1938', with box of issue; another identical but in bronze, (Awarded To) and inscribed, 'Doris Mabel Saunders/1931-1941', (Ethel and Doris Saunders are mother & daughter). *Very fine - good very fine.* (2)

\$120



2643\*

Royal Exchange Assurance, badge in silver and enamel (24x38mm), hallmarked for Birmingham 1942 by maker 'HCF Ld (H.C.Freeman Ltd), pin-back, obverse Queen Victoria Crown over Royal Exchange Building with R.E.A.1720 bar below (50 years since rebuild in 1670), reverse in relief, 'From The R.E.A./To/ engraved 'I - M/A Souvenir/Of/Good Services/Rendered/In/Time Of War'. *Extremely fine.*

\$200

2644

**Royal Commonwealth Tour, 1953-54**, in bronze (38mm) (BHM 4457; Eimer 2091), in Royal Mint case of issue, this with foxing on lining. *Extremely fine*.

\$50

Ex John Kennedy McLaughlin Collection.

2645

**The Church Benefit Society**, medal in oxidised bronze, with pin-back suspender 'The Church Benefit Society', obverse, Founded 1878, plain reverse inscribed, 'Medal of Honour/1958./Sister./Dorothy Williams.'; Salvation Army Nurses Fellowship, lapel badge in gilt and enamel, pin-back. *Good very fine*. (2)

\$70

The Society's full name was the Church of England Temperance Benefit Society founded in 1878.

2646

**London Shipping Athletic Association**, undated, medal in silver (28mm), ring top suspension, with pin-back ribbon suspender 'Vice President', with clasp on ribbon, 'London Shipping Athletic Association', obverse, a Viking long ship with shield from the City of London coat-of-arms on the sail, plain reverse inscribed, 'K.P.Barrett', with case of issue by F.Phillips, Aldershot. *Extremely fine*.

\$50

K.R.Barrett was vice president of the London Shipping Athletic Association. He was employed by Barretts at Hastings 1959-1973. He died 18 August 1986.

2647

**1000 Years of British Monarchy**, Edgar - Elizabeth II (973-1973), sterling silver mint edition of fifty ingots, hallmarked (66.2gm each; 23mmx45mm) by John Pinches. *In timber case with certificate of ownership, uncirculated*.

\$2,000

2648

**Churchill Centenary Medals**, Trustees Presentation Edition, 1974, set of twenty four gilded sterling silver medals (each 25.8g, 38mm, total weight 619g) by John Pinches, London. *In presentation album, with certificate of ownership, set number 2190, extremely fine - uncirculated*.

\$350

2649

**Churchill Centenary Medals**, Trustees Presentation Edition, 1974, set of twenty four gilded sterling silver medals (each 25.8g, 38mm, total weight 619g) by John Pinches, London. *In presentation album, with certificate of ownership, set number 1840, extremely fine - uncirculated*.

\$350

2650

**The Mountbatten Medallic History of Great Britain and the Sea**, in 4 volumes, each with twenty five proof sterling silver medals (44mm, 37.8g each) depicting a significant moment in British Maritime history, issued by John Pinches Medallists Ltd, London, 1974, this set numbered 1986. *In official green albums, FDC*. (101)

\$2,600

An additional medal for The First Ark Royal, still in its folder of issue, is included with this set to replace the original medal which has an error on it.

Weight for shipping is 15kg.

2651

**The Mountbatten Medallic History of Great Britain and the Sea**, in 4 volumes, each with twenty five proof sterling silver medals (44mm, 37.8g each) depicting a significant moment in British Maritime history, issued by John Pinches Medallists Ltd, London, 1974, this set numbered 1987. *In official green albums, FDC*. (100)

\$2,600

Weight for shipping is 15kg.

2652

**The Mountbatten Medallic History Of Great Britain And The Sea**, volumes I - IV, sets of twenty five proof sterling silver medals each depicting a significant moment in British maritime history (44mm, 37.8g each), issued by John Pinches Medallists Ltd, 1974. *In official green albums, FDC*. (100)

\$2,600

2653

**Order of the Companion of Honour**, a medallic replica of the centrepiece of the badge and the oval inscription, on a uniface bronze octagonal (50x60mm); Jubilee medal, 1935, in silver, obverse, robed busts of King George V and Queen Mary left, reverse, Windsor Castle and legend, 'Stet Firtuna Domus' (Eimer 2029a; BHM 4249). *The first uncirculated, the second with edge nick and pierced suspension hole, otherwise fine*. (2)

\$40

Ex Dr John M. Bennett AM Collection.

2654

**House of Commons**, hexagonal brass seal replica (43mm) by S.H. England; King's College brass seal replica (45mm) by S.H. (515g). *In boxes of issue, uncirculated*. (2)

\$50



2655\*

**Scotland, Mackie Academy, Stonehaven, Aberdeenshire**, award medals in silver (2) (32mm) to Clara Cruse, one for 'Best English Scholar/1916', the other for 'Best Mathematical Scholar/1916'. Both medals in individual A & J Smith/Jewellers/Aberdeen, cases. *Some wear to outside of cases, medals good extremely fine*. (2)

\$100

Ex Malcolm C.Johnson Collection.

2656

Scotland, Edinburgh University, in bronze (51mm) 'D.H.Marshall, Physicans 1867'; University of London Athletic Club in silver (44mm) by M & W Birmingham hallmark 1911, '1912/100 yards/1st Prize' in Mappin & Webb case. *Extremely fine; nearly uncirculated.* (2)

\$40



2657\*

Scotland, WWI, Prisoner of War Camp, Stobs, 1916, medal in white metal (44mm) (Eimer 1955), in wooden case with sliding lid. *Nearly uncirculated.*

\$200

Ex Malcolm C. Johnson Collection.

2658

Scotland, Edinburgh University, in bronze, engraved 'Indian & Colonial Forest Trees/1936-37/Gordon S. Walker', by Alex Kirkwood & Son Edinburgh. *In case, uncirculated.*

\$30



2659\*

Ireland, Trinity College, Dublin, The College Historical Society award, 1794, in silver (52 mm), unnamed (E.863). *A few edge knocks, toned, good fine.*

\$100



2660\*

Isle of Man, WWI, Prisoner of War Camp, Douglas, c1916, medal in white metal (45mm) (Eimer 1945). *In wooden case with sliding lid, nearly uncirculated.*

\$150

Ex Malcolm C. Johnson Collection.