

PROCLAMATION COINS



1291*
Brazil, John V, twelve thousand eight hundred reis or 'Johanna', 1730M (Minas Gerais)(KM.139). *Minor contact marks on cheek and neck, otherwise nearly extremely fine and rare.*

\$9,000

In a PCGS slab as AU58.



1292*
Brazil, Mary I, six thousand four hundred reis or half Johanna, 1792R (Rio) (KM.226.1). *Extremely fine/good extremely fine with some mint bloom.*

\$1,250

Ex Noble Numismatics Sale 62 (lot 1401).



1293*
Chile, Ferdinand VII, gold eight escudos, Santiago mint, 1810 F.J. (KM.72). *Very fine/good very fine, scarce.*

\$2,500

Ex Allan Sutherland Collection and illustrated in his book Numismatic History of New Zealand Plate No.4 (opposite p.28).

1294
Great Britain, George III, guinea, fifth head or spade type, 1797 (S. 3729). *Has been mounted, fine.*

\$330



1295*
Great Britain, George III, copper cartwheel twopence, 1797 (S.3776). *Nearly extremely fine.*

\$300



1296*
Great Britain, George III, copper cartwheel twopence, 1797 (S.3776). *Good very fine.*

\$150



1297*
Great Britain, George III, copper cartwheel twopence, 1797 (S.3776). *Attractive dark brown patina, good very fine and scarce in this condition.*

\$100

1298
Great Britain, George III, copper cartwheel pennies 1797 (S.3777). *Hoard patination, otherwise very fine or better.* (3)

\$150



1299*
Great Britain, George III, copper halfpenny, 1799 (S.3778).
Brown and red toned nearly uncirculated.

\$250

1300
Great Britain, George III, copper halfpenny, 1799 (S.3778).
Good very fine.

\$50



1301*
India, East India Company, Bengal Presidency, Murshidabad Mint type, 1793 type, Milled issue, Perpetual 19 san sicca series of standard gold currency, in the name of Shah Alam II (A.H. 1173-1221, A.D. 1759-1806), gold mohur, (12.32 grams), regnal year 19 (fixed), and dated A.H. 1202 = A.D. 1784-5 and with oblique milling to right, (Pr.64, KM.100).
Extremely fine, scarce.

\$800



1302*
India, East India Company, Madras Presidency, Indian Style Coinage, Hindu System, gold star pagoda, c.1740-1807, struck at Madras mint, obv. crude half standing figure of a deity, rev. five pointed star within dotted borders, (Pr.9, KM.303).
Extremely fine, scarce. (2)

\$500



1303*
India, East India Company, Madras Presidency, European style coinages, Hindu system, gold two pagodas (1805-15), temple gateway, nine stars either side, with garter, inscribed with values in English and Persian, rev. Vishna, value in Tammil and Telugu, edge grained right (KM.358, Pr.146).
As struck, good extremely fine.

\$750



1304*
India, East India Company, Madras Presidency, gold pagoda (1808) (KM.356) top of pagoda points between O and D.
Extremely fine.

\$250



1305*
Mexico, Charles III, silver eight reales, 1769MF (KM.105).
Some hairlines, good very fine.

\$200



1306*
Mexico, Charles III, silver eight reales, 1793 FM, Mexico City mint, (KM.109).
Nearly very fine, hoard patination.

\$200

1307
Mexico, Charles III, silver eight reales, 1797 FM, Mexico City mint, (KM.109).
Nearly very fine, hoard patination.

\$150



1308*
Mexico, Charles III, silver eight reales, 1800 FM, Mexico City mint, (KM.109).
Nearly very fine, hoard patination.

\$180

HOLEY DOLLARS AND DUMPS



1309*
Mexico, Charles III, silver eight reales, 1803 FT, Mexico City mint, (KM.109). *Nearly very fine.*

\$180



1310*
Netherlands, Utrecht, three gulden, 1786 (KM.117). *Good very fine.*

\$150

1311
Netherlands, West Friesland, three gulden, 1793 (KM.141.2). *Good very fine.*

\$200



1312*
Peru, Ferdinand VII, (1808-1821), eight reales imaginary bust dollar, Lima City mint, 1811 JP, (KM.106.2). *Toned, very fine and scarce.*

\$250



1313*
New South Wales, five shillings or holey dollar, 1813, struck on a Charles III Mexico City mint eight reales, 1800 F.M. (Mira dies B/10; I/10). *The coin fine/very fine and slightly dished, the countermarks fine/good very fine, toned and very rare.*

\$90,000

Ex R.Farman Collection; R.Jewell Collection; G.Robinson Collection; Spink Australia Sale 22 (lot 1866).



1314*
New South Wales, fifteen pence or dump, 1813 (Mira dies A/1). *Struck over the centre of a Charles III eight reales, traces of the original reverse on the obverse and original obverse on the reverse, toned very fine and rare in this condition.*

\$35,000

Ex Hillel Kaslove Collection (obtained by him by exchange in New York 6 May 1968)

AUSTRALIAN GOLD COINS

ADELAIDE ASSAY OFFICE

1318

Adelaide ingot, electrotpe, 1852, gold plated (29mm x 46mm); Adelaide pound, 1852, second type, gold plated in two halves; electrotpe holey dollar, 1813, on a 1806 Lima original, silver plated in two halves, made by Charles Ready. *Very fine.* (3)

\$300



1315*

New South Wales, fifteen pence or dump, 1813 (Mira dies D/2). *Traces of the centre of the original eight reales on the reverse, lightly toned nearly very fine and very rare in this condition.*

\$35,000



1316*

New South Wales, fifteen pence or dump, 1813 (Mira dies A/1). *Traces of the centre of the reverse of the original eight reales on the reverse, well struck, evenly worn with two or three old contact marks on the obverse, nearly very fine and very rare in this condition.*

\$30,000



1317*

New South Wales, fifteen pence or dump, 1813 (Mira dies A/1). *Traces of reverse of original coin on the reverse, edge knocks and granular surface, toned good fine and rare.*

\$10,000



1319*

Adelaide pound, first type, 1852, with beaded inner circle on reverse and die crack, wide edge milling or graining. *Well struck, nearly extremely fine and very rare.*

\$150,000



1320*

Adelaide pound, second type, 1852. *Subdued mint bloom with only very minor surface marking, later die state five raised dots above 22 C, nearly uncirculated and rare in this condition.*

\$35,000

In a PCGS slab as AU55.



1321*
Adelaide pound, second type, 1852, with crenellated inner circle on the reverse. *Well struck for later die state, minor hairline scratch centre right of reverse, planchet crack at 4 o'clock expertly filled, otherwise good extremely fine.*

\$25,000

Ex Noble Numismatics Sale 51 (lot 1565).

SYDNEY MINT SOVEREIGNS



1322*
Queen Victoria, first type, 1855. *High rims, virtually no wear however minor brushing and surface marks, rim nick at 1.30 on obverse otherwise nearly extremely fine and rare in this condition.*

\$8,000



1323*
Queen Victoria, first type, 1856. *Minor surface marks, nearly extremely fine and rare in this condition.*

\$12,500



1324*
Queen Victoria, second type, 1858. *Good very fine and rare in this condition.*

\$1,500



1325*
Queen Victoria, second type, 1859. *Good very fine.*

\$500



1326*
Queen Victoria, second type, 1860. *Rim bruise on obverse at 11 o'clock, minor contact marks, otherwise nearly very fine/very fine and rare.*

\$750



1327*
Queen Victoria, second type, 1862. *Nearly uncirculated and very rare in this condition.*

\$10,000



1328*
Queen Victoria, second type, 1862. *Reverse rim bruise at 2.30, contact mark on tip of chin, considerable original mint bloom, nearly uncirculated and very rare in this condition.*

\$5,000

Private purchase from Spink Australia in 1984.



1329*
Queen Victoria, second type, 1862/1 overdate. *Reverse with very minor rim bruise at 4 o'clock and trace of edge milling filed smooth nearby, otherwise well struck good extremely fine or nearly uncirculated and very rare thus.*

\$3,000



1330*
Queen Victoria, second type, 1863. *Die filled gaps in E and G in sovereign on reverse, nearly uncirculated and very rare in this condition.*

\$3,500

Private purchase from Spink Australia in 1984.



1331*
Queen Victoria, second type, 1864. *Full original mint bloom, choice uncirculated and rare in this condition, one of the finest known.*

\$3,500

Ex Spink Australia Sale 11 (lot 545) and sale 14 (lot 546)



1332*
Queen Victoria, second type, 1864. *With full original mint bloom, good extremely fine and rare in this condition.*

\$1,000



1333*
Queen Victoria, second type, 1866. *Underlying full original mint bloom, particularly on the reverse, uncirculated.*

\$3,000

In a NGC slab as MS63.



1334*
Queen Victoria, second type, 1866. *Considerable mint bloom, extremely fine/good extremely fine.*

\$1,000

Purchased from Spink Australia in June 1981.



1335*
Queen Victoria, second type, 1866. *Scuff marks on neck otherwise nearly uncirculated.*

\$750



1336*
Queen Victoria, second type, 1870. *Metal flaw under neck, minor surface marks otherwise full brilliant mint bloom, uncirculated/choice uncirculated.*

\$4,000



1337*
Queen Victoria, second type, 1870. *Nearly uncirculated.*

\$1,200

SYDNEY MINT HALF SOVEREIGNS



1338*
Queen Victoria, first type, 1855, with filleted head of Victoria left by James Wyon. *Attractively toned nearly extremely fine and extremely rare in this condition, probably the third finest known.*

\$160,000



1343*
Queen Victoria, second type, 1864. *Bent from heavy blow in front of neck resulting in two or three sharp marks, otherwise very fine.*

\$300



1344*
Queen Victoria, second type, 1865. *Very fine/fine.*

\$300



1339*
Queen Victoria, first type, 1856, with filleted head of Victoria left by James Wyon. *Subdued full original mint bloom, minute surface marks otherwise uncirculated and very rare in this condition, one of the finest known.*

\$40,000



1345*
Queen Victoria, second type, 1866. *Lightly toned, good very fine and rare in this condition.*

\$2,500

In an NGC slab as XF45 (S.M. Damon Collection).



1340
Queen Victoria, second type, 1858. *Very fine.*

\$500

Ex Noble Numismatics Sale 61 (lot 3043).

IMPERIAL SOVEREIGNS - SHIELD REVERSE



1346
Queen Victoria, 1871 Sydney, incuse ww (McD.118a). *Die flaw through D of DEI, frosty mint bloom, nearly uncirculated/uncirculated, peripheral die breaks on both sides.*

\$750



1341*
Queen Victoria, second type, 1861. *Good fine.*

\$350



1347*
Queen Victoria, 1871 Sydney, ww in relief (McD.118). *Extremely fine/good extremely fine.*

\$500



1342*
Queen Victoria, second type, 1862. *Slight edge bruise at 1 o'clock on obverse, otherwise nearly very fine.*

\$400



1348*
Queen Victoria, 1872/1 overdate Melbourne. *Die break from rim through 2 to neck, top of one visible above the 2, good very fine and rare.*

\$700



1349*
Queen Victoria, 1873 Sydney. *Extremely fine/good extremely fine.*

\$500



1350*
Queen Victoria, 1874 Melbourne. *Frosty mint bloom on reverse, nearly extremely fine/extremely fine.*

\$500



1351*
Queen Victoria, 1877 Sydney. *Good extremely fine.*

\$600



1352*
Queen Victoria, 1878 Sydney. *Full original mint bloom, gem uncirculated and rare in this condition, one of the finest known.*

\$3,000

Ex Noble Numismatics Sale 67 (lot 1286)



1353*
Queen Victoria, 1879 Sydney. *Good extremely fine/nearly uncirculated.*

\$500



1354*
Queen Victoria, 1879 Sydney, C over O in Victoria. *Minute die breaks on obverse, nearly full mint bloom, nearly uncirculated/uncirculated and extremely rare, only the second we have seen.*

\$3,500

Private purchase in 1982.



1355*
Queen Victoria, 1880 Sydney. *Full original mint bloom, gem uncirculated and one of the finest known.*

\$4,500

Ex Noble Numismatics Sale 67 (lot 1290)



1356*
Queen Victoria, 1880 Sydney. *Inverted A for V in Victoria. Good extremely fine and rare, one of the finest known.*

\$7,000



1357*
Queen Victoria, 1883 Melbourne. *Reverse rim bruise otherwise good very fine/extremely rare in this condition.*

\$1,500



1358*
Queen Victoria, 1884 Melbourne. *Well struck full mint bloom, gem uncirculated.*

\$3,500

Private purchase from KJC in 1996.



1359*
Queen Victoria, 1885 Melbourne. *Nearly uncirculated.*
 \$450

Ex Noble Numismatics Sale 60 (lot 1431)



1364*
Queen Victoria, 1887 Sydney. *Considerable mint bloom, nearly uncirculated/uncirculated and scarce in this state.*
 \$1,000

Ex Noble Numismatics Sale 79 (lot 1318).



1360*
Queen Victoria, 1885 Sydney. *Full frosty mint bloom, uncirculated/choice uncirculated.*
 \$750

Ex Noble Numismatics Sale 52 (lot 1514)

IMPERIAL SOVEREIGNS - ST GEORGE REVERSE



1365*
Queen Victoria, 1872 Melbourne. *Full original mint bloom, gem uncirculated and very rare in this condition, probably the finest known.*
 \$17,500

Private purchase from KJC in 1996.



1361*
Queen Victoria, 1886 Sydney. *Full original mint bloom, gem uncirculated and rare in this state, one of the finest known.*
 \$4,000

Ex Noble Numismatics Sale 79 (lot 1313) and Spink Australia Sale 5 (lot 456).



1366*
Queen Victoria, 1872 Melbourne. *Some mint bloom, nearly uncirculated and rare, especially in this state.*
 \$2,500

Ex Douro Cargo (from Monetarium).



1362*
Queen Victoria, 1886 Sydney. *Considerable mint bloom, nearly uncirculated/uncirculated.*
 \$700

Ex Noble Numismatics Sale 52 (lot 1515).



1367*
Queen Victoria, 1872 Sydney. *Some mint bloom, nearly extremely fine/nearly uncirculated.*
 \$500



1363*
Queen Victoria, 1887 Melbourne. *Good very fine/ nearly extremely fine and rare.*
 \$5,000

1368
Queen Victoria, 1873 Melbourne. *Extremely fine/good extremely fine.*
 \$350
 Private purchase from Jaggards 1985.



1369*
Queen Victoria, 1874 Sydney. *Full mint bloom, uncirculated and rare, one of the finest known.*

\$7,500

Private purchase from KJC in July 1996.



1374*
Queen Victoria, 1877 Melbourne. *Minor contact marks, full original mint bloom, choice uncirculated and rare in this condition, one of the finest known.*

\$7,000

Private purchase from KJC in July 1996.



1370
Queen Victoria, 1875 Melbourne. *Choice uncirculated and rare in this condition.*

\$5,000

Ex Noble Numismatics Sale 67 (lot 1312).



1375*
Queen Victoria, 1878 Melbourne. *Full original mint bloom, choice uncirculated and rare, one of the finest known.*

\$3,000

Private purchase from KJC in May 1998.



1371*
Queen Victoria, 1875 Sydney. *Uncirculated/choice uncirculated and rare in this condition.*

\$3,500

Ex Noble Numismatics Sale 72 (lot 1303).



1376*
Queen Victoria, 1879 Melbourne (McD.157a). *Subdued mint bloom, uncirculated/choice uncirculated, rare in this state.*

\$2,500

Ex Noble Numismatics Sale 67 (lot 1320).



1372*
Queen Victoria, 1875 Sydney. *Nearly uncirculated.*

\$1,500

Ex Douro Cargo (from Monetarium).



1377
Queen Victoria, 1879 Melbourne (McD.157). *Hairline scratch under neck, otherwise nearly uncirculated/uncirculated.*

\$800

1378*
Queen Victoria, 1879 Melbourne (McD.157). *Good extremely fine/nearly uncirculated.*

\$700



1373*
Queen Victoria, 1876 Melbourne. *Full mint bloom, choice uncirculated.*

\$1,800

Slabbed by NGC as MS63.



1379*
Queen Victoria, 1879 Sydney. *Choice uncirculated and very rare in this condition, one of the finest known.*

\$12,500

Ex Noble Numismatics Sale 67 (lot 1321).

1380

Queen Victoria, 1880 Melbourne (McD.159). *Good extremely fine. (2)*

\$700



1386*

Queen Victoria, 1883 Melbourne (McD.165a). *Some mint bloom, surface marks otherwise nearly uncirculated.*

\$450

1381*

Queen Victoria, 1881 Melbourne. *Obverse scuff in field, otherwise full mint bloom uncirculated/choice uncirculated.*

\$1,500



1387*

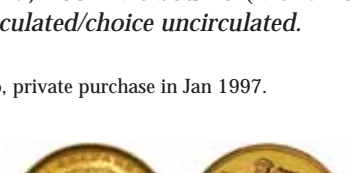
Queen Victoria, 1883 Melbourne (McD.165b). *Surface marking otherwise nearly uncirculated.*

\$450

1382*

Queen Victoria, 1881 Melbourne (McD. 161). *Some red toning, uncirculated/choice uncirculated.*

\$600



Ex Douro Cargo, private purchase in Jan 1997.

1388*

Queen Victoria, 1883 Sydney. *Surface marking on obverse otherwise nearly uncirculated/uncirculated and very scarce in this condition.*

\$1,000

1383*

Queen Victoria, 1882 Melbourne (McD.163b). *Full original mint bloom, gem brilliant uncirculated and very rare in this condition, the finest known.*

\$6,000



1389

Queen Victoria, 1884 Melbourne (McD. 167b). *Surface marking otherwise good extremely fine.*

\$400

Private purchase from KJC in June 1998.



1384*

Queen Victoria, 1882 Sydney, faint BP (McD. 162a). *Full original subdued mint bloom, uncirculated/choice uncirculated.*

\$2,000



1390*

Queen Victoria, 1884 Sydney. *Obverse contact marks otherwise frosty mint bloom, nearly uncirculated/uncirculated and very scarce in this condition.*

\$2,500

Private purchase from KJC in Feb 1996.

Private purchase in 1980.



1385*

Queen Victoria, 1883 Melbourne. *Minimal surface marks, full orange mint bloom, uncirculated.*

\$800

1391*

Queen Victoria, 1885 Melbourne (McD. 169b). *Extremely fine/good extremely fine.*

\$450

Slabbed by PCGS as MS62.



1392*
Queen Victoria, 1885 Sydney. *Good very fine/extremely fine.*

\$450



1393*
Queen Victoria, 1886 Melbourne, very faint BP. *Full mint bloom, uncirculated/choice uncirculated and one of the finest known.*

\$1,500



1394*
Queen Victoria, 1886 Melbourne. *Nearly uncirculated/uncirculated.*

\$1,500

Private purchase from KJC in July 1996.



1395*
Queen Victoria, 1886 Melbourne. *Lightly toned with subdued mint bloom, nearly uncirculated.*

\$700



1396*
Queen Victoria, young head, 1887 Sydney. *Full mint bloom, uncirculated and well struck.*

\$2,000

Private purchase from KJC in July 1996.



1397*
Queen Victoria, Jubilee head, 1887 Melbourne (McD.175a). *Surface marks otherwise good extremely fine.*

\$350



1398*
Queen Victoria, Jubilee head, 1887 Sydney, small spaced JEB. *A superb specimen, full original satin or pearl-like mint bloom, three or four contact marks hardly noticeable, E in JEB filled, gem uncirculated or nearly FDC and very rare in this condition, possibly the finest known.*

\$12,000

Slabbed by NGC as MS66.



1399*
Queen Victoria, Jubilee coinage, 1887 Sydney (McD 174a). *Nearly uncirculated and very scarce.*

\$1,800

Ex Monetarium.

1400
Queen Victoria, Jubilee head, 1888 Sydney (McD.176c). *Good extremely fine.*

\$350



1401*
Queen Victoria, 1889 Melbourne (McD 189a) 9 of date slopes to right. *Obverse contact marks otherwise uncirculated.*

\$1,500

1402
Queen Victoria, Jubilee head, 1889 (McD.178a) and 1893 Sydney. *Extremely fine; nearly uncirculated. (2)*

\$600



1403*
Queen Victoria 1890 Sydney. *Full mint bloom, choice uncirculated and rare in this condition.*

\$1,800

Ex Monetarium.



1404*
Queen Victoria, 1892 Sydney. *Unmarked, choice uncirculated with light subdued mint bloom, one of the finest known.*
 \$1,200



1410*
Queen Victoria, 1896 Sydney. *Uncirculated/choice uncirculated and rare in this condition.*
 \$1,500

Private purchase from KJC in Oct 1996.



1405*
Queen Victoria, Jubilee head, 1893 Melbourne. *Full mint bloom, choice uncirculated.*
 \$1,200

Slabbed by NGC as MS63.



1411*
Queen Victoria, 1897 Melbourne. *Brilliant uncirculated with minute field marks, rare in this choice state.*
 \$1,500



1406*
Queen Victoria, old head, 1893 Melbourne. *Surface marks, underlying brilliance, otherwise good extremely fine and scarce in this condition.*
 \$500



1412*
Queen Victoria, 1899 Melbourne. *Well struck, minor surface marking otherwise uncirculated/choice uncirculated.*
 \$400



1407*
Queen Victoria, 1894 Sydney. *Good extremely fine/uncirculated with brilliance.*
 \$400



1413*
Queen Victoria, 1899 Perth. *Uncirculated and rare in this condition.*
 \$4,000

Private purchase from KJC in May 1998.



1408*
Queen Victoria, 1895 Melbourne. *Obverse brilliance, uncirculated.*
 \$400



1414*
Queen Victoria, 1899 Sydney. *Uncirculated/choice uncirculated.*
 \$350



1409*
Queen Victoria, 1895 Sydney. *Uncirculated.*
 \$450

Private purchase from KJC, May 1998.



1415*
Queen Victoria, 1900 Melbourne. *Full mint bloom/choice uncirculated.*
 \$350

\$350

1416
Queen Victoria, 1900 Sydney. *Even tone, nearly extremely fine.*

\$300

1417
Queen Victoria, 1900 Perth. *Surface marks, frosty mint bloom, nearly uncirculated.*

\$350

Private purchase in May 1996.



1418*
Queen Victoria, 1901 Perth. *Frosty mint bloom, nearly uncirculated.*

\$400

Private purchase in May 1996.



1419*
Edward VII, 1907 Sydney. *Well struck with full mint bloom, choice uncirculated.*

\$400



1420*
George V, 1925 Perth. *Attractive orange tone in part, uncirculated.*

\$400



1421*
George V, 1924 Melbourne. *Brush markings in part otherwise uncirculated.*

\$350



1422*
George V, 1924 Perth. *Uncirculated.*

\$450

Private purchase in May 1996.



1423*
George V, 1925 Perth. *Lightly toned, nearly uncirculated/uncirculated.*

\$500

Private purchase from Spink Australia in June 1983.



1424*
George V, 1927 Perth. *Well struck, nearly uncirculated and very scarce.*

\$1,000



1425*
George V, 1928 Perth. *Nearly uncirculated/uncirculated.*

\$400

Private purchase in May 1996.



1426*
George V, small head, 1930 Melbourne. *Nearly uncirculated.*

\$600

1427
George V, small head, 1931 Melbourne. *Nearly uncirculated.*

\$750

Ex Cheshire Collection. \$\$ In an NGC slab as AU58.

1428
George V, small head, 1931 Perth. *Nearly uncirculated.*

\$350

Private purchase in April 1984.

IMPERIAL HALF SOVEREIGNS



1429*
Queen Victoria, 1871 Sydney. *Old hairline scratch on obverse, otherwise nearly extremely fine.*

\$500



1430*
Queen Victoria, 1881 Sydney (McD.21a). *Obverse hairlines and frictional wear, extremely fine/nearly uncirculated and rare.*

\$12,000

Ex Reserve Bank of Australia Sale (lot 661). In an NGC slab as AU53.



1431*
Queen Victoria, 1882 Sydney. *Lightly rubbed, good fine or better and rare in this condition.*

\$400



1432*
Queen Victoria, 1884 Melbourne. *Nearly uncirculated/uncirculated and rare in this condition.*

\$12,000



1433*
Queen Victoria, 1885 Melbourne. *Obverse rim nick at 3 o'clock, some original mint bloom, surface marks otherwise nearly uncirculated and rare.*

\$12,000

Ex Reserve Bank of Australia Sale (lot 707). In an NGC slab as AU50.



1434*
Queen Victoria, young head, 1887 Melbourne. *Surface marking and frictional wear otherwise nearly uncirculated and rare.*

\$9,000

Ex Reserve Bank of Australia Sale (lot 732). In an NGC slab as AU50.



1435*
Queen Victoria, young head, 1887 Sydney. *Good very fine/extremely fine.*

\$500



1436*
Queen Victoria, Jubilee head 1887 Sydney (McD 32a). *Extremely fine.*

\$500



1437*
Queen Victoria, 1896 Melbourne. *Minute contact marks across forehead, hair and veil, uncirculated/choice uncirculated and rare in this condition, one of the finest known.*

\$3,000



1438*
Queen Victoria, 1900 Sydney. *Die breaks at 4 o'clock and 8 o'clock. Considerable mint bloom, nearly uncirculated.*

\$1,000



1439*
Edward VII, 1902 Sydney. *Hairline scratch across back of king's neck otherwise brilliant uncirculated.*

\$600

Ex Noble Numismatics Sale 67 (lot 1443).

PATTERNS AND PROOFS



1440*
Edward VII, 1904 Perth. *Good very fine or nearly extremely fine for this scarce issue.*

\$400



1441*
Edward VII, 1906 Melbourne. *Extremely fine and rare in this condition.*

\$400



1442
Edward VII, 1908 Melbourne. *Nearly extremely fine.*

\$200

Private purchase July 1979.

1443
Edward VII, 1910 Sydney. *Good extremely fine.*

\$200



1444*
George V, 1915 Melbourne. *Some contact marks in fields, unusual brilliance for this date, choice uncirculated.*

\$300

Private purchase in June 1994.



1445*
George V, 1918 Perth. *Struck from clashed obverse die, two small dents on neck otherwise extremely fine and rare.*

\$4,000



1446*
Queen Victoria, Jubilee head, Melbourne Mint proof sovereign, 1893M. *Superb brilliant frosted proof, FDC and extremely rare.*

\$75,000

Ex Noble Numismatics Sale 51 (lot 1560).



1447*
Queen Victoria, Jubilee head, Melbourne Mint proof half sovereign, 1893M. *Superb brilliant frosted proof, FDC and extremely rare.*

\$75,000

Ex Noble Numismatics Sale 79 (lot 1398).



1448*
George V, Melbourne Mint pattern square cupro-nickel kookaburra penny, 1919 (4.02gms) (R. type 3), by C.D. Richardson. *Obverse with spotting and grey tone, reverse with brilliant golden tone, otherwise FDC and rare.*

\$50,000

Duplicate from the Museum Victoria Collection.



1449*
George V, Melbourne Mint pattern square penny, cupro-nickel kookaburra, 1919 (3.83 grams) (R.type 6) by C.D. Richardson. *Slight toning and three carbon specks on top obverse rim, FDC and rare, one of the finest known.*

\$75,000



1450*
George V, Melbourne Mint pattern square cupro-nickel kookaburra penny, 1920 (3.89gms) (R. type 7), by C.D. Richardson. *Light grey tone, with mint bloom, otherwise nearly FDC and very rare.*

\$60,000

Duplicate from the Museum Victoria Collecton.



1451*
George V, Melbourne Mint pattern square cupro-nickel kookaburra penny, 1920 (3.85gms) (R. type 9), by C.D. Richardson. *Hairline mark on obverse, slight scrape mark and minor metal flaw on top left corner of reverse, grey tone with mint bloom, otherwise nearly FDC and very rare, known as the square legend type.*

\$90,000

Duplicate from the Museum Victoria Collection.



1452*

George VI, Royal Mint pattern shilling, 1937 (5.42gms), uniface, the obverse having been tooled out at the Royal Mint. *Faint scratch between tip of rams horn and rim denticles, otherwise good extremely fine and extremely rare.*

\$100,000



1453*

George VI, Melbourne Mint proof or pattern penny, 1945. *Brilliant striking with full mint red obverse and reverse, the finest example available for private collection, FDC and excessively rare.*

\$200,000

Duplicate from the Museum Victoria Collection.

This coin is one of four 1945 Melbourne Mint proof pennies that were retained by the mint in 1945. In that year pennies for circulation in Australia were all to be struck by the Perth Mint with dies supplied from Melbourne. However, the original 1937 George VI master tools had become worn and in early 1945 the Melbourne Mint undertook to make new masters. The four proof pennies were part of the tests of these new tools before new dies were prepared for Perth. The Melbourne Mint coin collection, including the four 1945 pennies, was transferred to the Museum of Victoria in 1978. The Museum will be retaining two examples. One of the four coins was sold in Spink Australia Sale 25 (lot 953) and resold in Noble Numismatics Sale 83 (lot 1418).



1454*

George V, Melbourne Mint specimen shilling, 1916M. *Die axis at 30 degree rotation, hairline die breaks on reverse, cleaned with mirror finish on reverse, nearly FDC and very rare.*

\$5,000



1455*

George V, Sydney Mint specimen/proof halfpenny, 1919. *Unevenly toned with some spotting, nearly FDC and extremely rare.*

\$20,000

Duplicate from the Museum Victoria Collection.



1456*

George V, Melbourne Mint proof halfpenny, 1925. *Dark glossy brown with hints of red nearly FDC/FDC and extremely rare.*

\$30,000



1457

George V, Melbourne Mint, proof Canberra florin, 1927. *Obverse with cabinet friction wear, nearly FDC and rare.*

\$10,000



1458*
George V, Melbourne Mint proof or specimen Canberra commemorative florin, 1927. *Field scuffs in front of face, deeply toned with subdued brilliance in parts, nearly FDC and rare.*

\$9,000



1462*
George VI, Perth Mint proof halfpenny, 1948. *Red and brown brilliance, FDC and very rare.*

\$22,000

Ex Noble Numismatics Sale 75 (lot 1539).



1459*
George V, Melbourne Mint proof sixpence, 1934. *Blue grey toned, nearly FDC and rare.*

\$10,000



1463*
George VI, Royal Mint London proof halfpenny, 1951 PL. *Minor finger marking otherwise full brilliant mint red FDC and very rare.*

\$17,500



1464
Elizabeth II, Melbourne Mint proof set, 1955. *Some spotting on penny, nearly FDC. (4)*

\$800



1460*
George V, Melbourne Mint proof penny and halfpenny set, 1935. *Some carbon spotted areas on halfpenny otherwise brilliant red and brown, nearly FDC and rare. (2)*

\$45,000



1465*
Elizabeth II, Perth Mint proof set, 1955. *Brilliant red FDC and rare. (2)*

\$15,000



1461*
George VI, Perth Mint proof penny, 1944. *With rich red tone, FDC and extremely rare.*

\$35,000

1466
Elizabeth II, Melbourne Mint, proof florin, 1956. *Toned, some spotting otherwise, nearly FDC.*

\$100

Ex Spink Australia Sale 33 (lot 906).



1467*
Elizabeth II, Perth Mint proof penny, 1956. *Purple and red toned and oiled otherwise nearly FDC and rare.*
 \$5,000

1468
Elizabeth II, Melbourne Mint proof set, 1957. *FDC.* (4)
 \$600

1469
Elizabeth II, Melbourne Mint proof florin, 1957. *FDC.*
 \$200

In NGC slab as pf 65.



1470*
Elizabeth II, Perth Mint proof pennies, 1957, a set of four different varieties, two brilliant finish and two matte finish. *The fourth toned nearly FDC, the others FDC.* (4)
 \$3,500

1471
Elizabeth II, Perth Mint proof penny, 1957. *Brilliant finish, FDC.*
 \$1,000

In PCGS slab as PR61RB.



1472*
Elizabeth II, Perth Mint proof penny, 1957. *Matte finish, FDC.*
 \$1,000

1473
Elizabeth II, Perth Mint proof penny, 1957. *Matte finish, toned nearly FDC.*
 \$500

1474
Elizabeth II, Perth Mint proof penny, 1957. *Matte finish, toned otherwise nearly FDC.*
 \$300

1475
Elizabeth II, Melbourne Mint proof set, 1958. *Penny with some spotting and stain, threepence unevenly toned, nearly FDC - FDC.* (5)
 \$600

1476
Elizabeth II, Melbourne Mint proof florin, 1958. *Toned, nearly FDC.*
 \$150

1477
Elizabeth II, Perth Mint proof penny, 1959. *Two small tone spots on obverse, smokey appearance otherwise nearly FDC.*
 \$500

With original M.R.Roberts' envelope of sale.

1478
Elizabeth II, Melbourne Mint proof set, 1960. In original heat sealed plastic. *FDC.* (4)
 \$300

1479
Elizabeth II, Perth Mint proof set, 1960. *Some spotting on halfpenny, nearly FDC - FDC.* (2)
 \$1,000

AUSTRALIAN COMMONWEALTH COINS

1480
Elizabeth II, Perth Mint proof set, 1960. *Minor spotting on halfpenny, obverse of penny with flaws in front of Queen's face, otherwise nearly FDC - FDC. (2)*
 \$1,000

1481
Elizabeth II, Melbourne Mint proof set, 1961. *FDC. (4)*
 \$350

1482
Elizabeth II, Melbourne Mint proof set, 1961. *In original heat sealed plastic. FDC. (4)*
 \$300

1483
Elizabeth II, Perth Mint proof set, 1961. *FDC. (2)*
 \$1,000

1484
Elizabeth II, Melbourne Mint proof set, 1962. *With black case of issue. FDC. (4)*
 \$400

1485
Elizabeth II, Melbourne Mint proof set, 1962. *With black plastic case. FDC. (4)*
 \$350

1486
Elizabeth II, Perth Mint proof set, 1962. *FDC. (2)*
 \$1,000

1487
Elizabeth II, Perth Mint proof set, 1962. *FDC. (2)*
 \$1,000

1488
Elizabeth II, Perth Mint proof set, 1962. *Toned, nearly FDC. (2)*
 \$700

1489
Elizabeth II, Melbourne Mint proof set, 1963. *With black case of issue. FDC. (4)*
 \$300

1490
Elizabeth II, Melbourne Mint proof set, 1963. *With black plastic case. FDC. (4)*
 \$250

1491
Elizabeth II, Perth Mint proof set, 1963. *FDC. (2)*
 \$1,000

1492
Elizabeth II, Perth Mint proof halfpenny and penny, 1963. *Toned, FDC. (2)*
 \$500



1493*
George V, year set, 1936, florin to halfpenny. *Well struck, toned, nearly uncirculated - uncirculated. (6)*
 \$900



1494*
George VI, year set, 1938, florin to halfpenny. *Toned nearly uncirculated - uncirculated.* (6)

\$350

1495
George VI, florin, shilling, sixpence and threepence, 1938 silver set. *The first lightly toned, uncirculated - choice uncirculated.* (4)

\$350



1496*
George VI, year set, 1939, florin to halfpenny. *The shilling and threepence choice uncirculated, the others nearly uncirculated.* (6)

\$1,200



1497
George VI, year set, 1940, florin to halfpenny, all Melbourne mint. *Toned nearly uncirculated.* (6)

\$400

CROWNS

1498
George VI, 1937. *Reverse toned, choice uncirculated or mint state.*

\$150



1499*
George VI, 1938. *Slightly hairlined otherwise nearly uncirculated.*

\$300

FLORINS



1500*
Edward VII, 1910. *Scuff on kangaroo's neck otherwise attractively toned with original mint bloom, good extremely fine/ nearly uncirculated.*

\$1,000



1501*
Edward VII, 1910. *Extremely fine/nearly uncirculated.*

\$750



1502*
George V, 1912. *Some mint bloom, extremely fine/good extremely fine and rare in this condition.*

\$500



1503*
George V, 1914. Reverse die break from emu's tail to last S good extremely fine/ nearly uncirculated.

\$500



1508*
George V, 1918M. Full frosty mint bloom, uncirculated. \$1,000



1504*
George V, 1914H. Uncirculated and rare in this condition. \$12,000



1509*
George V, 1919M. Grey and golden red toned, good extremely fine/nearly uncirculated and rare in this condition. \$3,000



1505*
George V, 1916M. Silver grey toning with mint bloom, minor surface marking otherwise nearly uncirculated.

\$1,000



1510*
George V, 1919M. Considerable mint bloom, nearly uncirculated and rare in this condition.

\$2,000

In NGC slab as MS 61.



1506*
George V, 1916M. Nearly uncirculated.

\$500



1511*
George V, 1921. Full original cartwheeling mint bloom, minor yellow brown rust toning, otherwise choice uncirculated and rare thus.

\$3,000



1507*
George V, 1917M. Obverse scuffing otherwise considerable mint bloom, nearly uncirculated/uncirculated.

\$750



1512*
George V, 1921. Well struck with full original mint bloom, minor rust stains, otherwise uncirculated and rare in this condition.

\$2,000



1513*
George V, 1923. *Well struck, nearly uncirculated.*
 \$1,500



1518*
George V, 1927 Canberra. *Attractive tone, uncirculated.*
 \$100



1514*
George V, 1924. *Matte obverse tone, reverse with considerable mint bloom, nearly uncirculated.*
 \$2,000

1519
George V, 1928. *Good extremely fine.*
 \$150



1520*
George V, 1931. *Uncirculated with near proof-like fields.*
 \$350



1515*
George V, 1924. *Golden tone, good extremely fine/nearly uncirculated.*
 \$1,200
 Purchased from Spink Australia in 1977.



1521*
George V, 1932. *Some original mint bloom, nearly uncirculated and very rare in this condition.*
 \$7,500



1516*
George V, 1927. *Full frosty mint bloom, lightly toned on the obverse, uncirculated.*
 \$750



1522*
George V, 1934. *Full original mint bloom, nearly choice uncirculated.*
 \$1,000



1517*
George V, 1927. *Nearly full original mint bloom, nearly uncirculated.*
 \$500



1523*
George V, 1934. *Lightly toned with full mint bloom, uncirculated.*
 \$750



1524*
George V, 1934-35 Melbourne Centenary. Full frosty mint bloom with full wreath on rider, uncirculated.
 \$400



1525*
George V, 1935. Full original satin or pearl-like mint bloom with frosted relief giving cameo proof-like appearance, miniscule contact marks take this just off perfect otherwise gem uncirculated and rare in this state, one of the finest known.
 \$3,000

Ex Drapers hoard.



1526*
George V, 1935. Nearly full original mint bloom, uncirculated.
 \$1,500



1527*
George V, 1936. Full original subdued mint bloom, gem uncirculated.
 \$400

Private purchase from B. Sparkes in March 1984.

SHILLINGS

1528
Edward VII, 1910. Toned, extremely fine.
 \$150



1529*
George V, 1911. Contact mark in left obverse field otherwise full original mint bloom, choice uncirculated and very rare in this state, one of the finest known.
 \$5,000



1530*
George V, 1911. Light contact marks on King's head, even golden tone with subdued mint bloom, rim nick on reverse, otherwise uncirculated / choice uncirculated.
 \$3,000



1531*
George V, 1912. Dipped, nearly extremely fine.
 \$500



1532*
George V, 1913. Lightly rubbed, otherwise nearly uncirculated and rare in this condition.
 \$1,800



1533*
George V, 1914. Iridescent tone, nearly uncirculated.
 \$750

In an NGC slab as MS61.



1534*
George V, 1914. *Toned extremely fine/good extremely fine.*

\$300



1539*
George V, 1917M. *Full mint bloom, nearly uncirculated/uncirculated.*

\$300



1535*
George V, 1915. *Good very fine.*

\$500

In a PCGS slab as XF45.



1540*
George V, 1918M. *Well struck, slightly rubbed, otherwise uncirculated.*

\$400



1536*
George V, 1915H. *Extremely fine and rare.*

\$600



1541*
George V, 1921 star. *Lightly toned golden silver blue, well struck and unmarked, choice uncirculated and very rare in this condition, one of the finest known.*

\$25,000

Ex John Wilson Collection (lot 2103).



1537*
George V, 1916M. *Full original frosty mint bloom, faint die break from emu to rim (like third leg), choice uncirculated.*

\$1,000

In an NGC slab as MS64.



1542*
George V, 1921 star. *Die flash in front of forehead, full original mint bloom, choice uncirculated and very rare in this condition, one of the finest known.*

\$12,000

Ex Spink Australia Sale 30 (lot 1606).



1538*
George V, 1917M. *Lightly toned, full original mint bloom, uncirculated.*

\$500

In PCGS slab as MS64.



1543*
George V, 1922. *Heavily rubbed, otherwise uncirculated.*

\$300



1544*
George V, 1924. Full original mint bloom, light golden brown tone, matte obverse, choice uncirculated, rare in this condition and one of the finest known.

\$10,000

In a PCGS slab as MS65.



1549*
George V, 1933. Lightly toned, full original subdued mint bloom, underlying brilliance on the reverse and well struck, choice uncirculated and very rare in this condition, one of the finest known.

\$30,000

Ex John Wilson Collection (lot 2111) and Richard A. Williams Collection (lot 1398).



1545*
George V, 1925. Some mint bloom, nearly uncirculated.

\$300



1550*
George V, 1933. Has been lightly polished to clean, otherwise well struck, uncirculated and rare in this condition, the key date to the shilling series.

\$7,500



1546*
George V, 1926. Trace of top left of 2 or 3 under the 6, obverse die 'pimpled' in left field, lightly polished, otherwise uncirculated.

\$300



1551*
George VI, 1939. Subdued mint bloom, uncirculated.

\$450



1547*
George V, 1928. Fine scratches in obverse field, contact marks on King's head, spotting on reverse, nearly uncirculated / uncirculated.

\$750



1552*
George VI, 1940. Full mint bloom, minute contact marks on cheek otherwise choice uncirculated and rare in this condition.

\$500

SIXPENCES



1548*
George V, 1928. Slightly toned and rubbed, otherwise nearly uncirculated, well struck and rare in this state.

\$700



1553*
Edward VII, 1910. Grey tone, bag marks on King's face, nearly uncirculated.

\$200

1554
Edward VII, 1910. Good extremely fine.

\$100



1561*
George V, 1921. Full semi frosted mint bloom, choice uncirculated.

\$1,500

1555*
George V, 1911. Nearly uncirculated.

\$750

In PCGS slab as MS60.



1562*
George V, 1922. Light grey-brown tone, nearly uncirculated and rare in this condition.

\$1,500

1556*
George V, 1912. Soft convex strike, nearly uncirculated and rare thus.

\$300



Slabbed by NGC as MS62.



1563*
George V, 1922. Toned, good extremely fine.

\$400

1557*
George V, 1916M. Struck from clashed obverse die, pink and grey tone with subdued mint bloom, nearly uncirculated.

\$750



In PCGS slab as AU53.



1564*
George V, 1925. Irregular toning, scratch on King's head, die crack on reverse, nearly uncirculated.

\$400

1558*
George V, 1917M. Full mint bloom, uncirculated.

\$2,000



1565
George V, 1927. Nearly uncirculated.

\$100



1559*
George V, 1920M. Attractive peripheral tone, uncirculated/choice uncirculated and rare in this condition.

\$2,500



1566*
George V, 1928. Obverse rim nicks, nearly uncirculated/uncirculated.

\$300



1560
George V, 1921. Depression above date where star was removed from the master die, proof-like reverse, light grey toned gem uncirculated.

\$1,500

1567
George V, 1934. Cleaned with light grey tone, good extremely fine/nearly uncirculated and brilliant.

\$200



1568*
George V, 1936. *Full original mint bloom, choice uncirculated.*

\$400

In a PCGS slab as MS65.



1569*
George VI, 1952. *Mint bloom, uncirculated and rare.*

\$400

1570
Elizabeth II, 1953. *Uncirculated.*

\$300

In PCGS slab as MS63.

THREEPENCES



1571*
Edward VII, 1910. *Gem uncirculated.*

\$150

Private purchase in Nov 1984.



1572*
George V, 1911. *Well struck full original mint bloom, choice uncirculated.*

\$800



1573*
George V, 1912. *Lightly toned, nearly uncirculated.*

\$1,500

In a PCGS slab as MS64.



1574*
George V, 1912. *Nearly full original mint bloom, peripheral gold toning, good extremely fine and rare.*

\$1,000



1575*
George V, 1915. *Lightly toned, considerable original mint bloom, nearly uncirculated and rare in this condition.*

\$3,000



1576*
George V, 1915. *Nearly uncirculated and rare.*

\$1,250



1577*
George V, 1917M. *Die break from back of emu to rim, pink and grey tone, subdued mint bloom, uncirculated and rare in this condition.*

\$300



1578*
George V, 1919M. *Dull matte tone from cleaning otherwise nearly uncirculated.*

\$300



1579*
George V, 1920M. *Full iridescent toned mint bloom, traces of reverse die clashing and hairline die break, choice uncirculated and rare thus.*

\$2,000



1580*
George V, 1921. *Full original mint bloom, reverse brilliant with iridescent toning both sides, choice uncirculated and rare in this condition.*

\$1,000



1581*
George V, 1921. *Small contact mark in left obverse field, struck with rusty reverse die, full mint bloom, uncirculated and rare thus.*

\$500



1587*
George V, 1925. *Pink and brown toning, spots on obverse, mint bloom on reverse, uncirculated.*

\$250



1582*
George V, 1921M. *Full mint bloom, uncirculated.*

\$150



part

1588*
George V, 1926 and 1936. *The first brilliant mint grey tone, second lightly toned, nearly uncirculated. (2)*

\$150



1583*
George V, 1922. *Die clash resulting in almost full outline of kangaroo behind King's head and on reverse the top of the King's crown is visible behind the star, uncirculated.*

\$500



1589*
George V, 1928. *Full original mint bloom, choice uncirculated.*

\$700



1584*
George V, 1922. *Softly struck, full mint bloom with peripheral blue toning on the reverse, uncirculated.*

\$300



1590*
George V, 1936. *Slight dent on kangaroo's leg, otherwise uncirculated.*

\$100



1585*
George V, 1923. *Uncirculated/choice uncirculated and very rare in this condition, one of the finest known.*

\$3,000



1591*
George VI, 1942. *Lightly toned, good extremely fine and rare.*

\$1,000



1592
George VI, 1947. *Mint bloom, uncirculated.*

\$100



1586*
George V, 1924 and 1925. *Nearly uncirculated. (2)*

\$200

PENNIES



1593*
George V, 1911. Full original mint red, gem uncirculated.
 \$1,000

Private purchase in Nov 1997.



1594*
George V, 1912H. Traces of red, full blue grey toned mint bloom, uncirculated.
 \$300



1595*
George V, 1914. Cleaned otherwise nearly uncirculated.
 \$250



1596*
George V, 1915. Nearly full original mint red, minute rim die cud on reverse at 2 o'clock, rare in this condition, one of the finest known.
 \$6,000



1597*
George V, 1917I. Mostly mint red, obverse field with scratches in front of King's head, spotting on reverse, otherwise nearly uncirculated.
 \$200



1598*
George V, 1918I. Cleaned otherwise nearly uncirculated with virtually unmarked surfaces, rare thus.
 \$750



1599*
George V, 1919. Dull red olive brown, uncirculated.
 \$850



1600*
George V, 1919. Dull olive red brown uncirculated, obverse rim die break at 2 o'clock.
 \$250



1601*
George V, 1921 Indian die. Cleaned red and brown, nearly uncirculated.
 \$250

1602

George V, 1921. *Some mint red, partial double striking of OMN:REX.F.D.IND, spotting on obverse and reverse, otherwise nearly uncirculated.*

\$200



1607*

George V, 1927 London die. *Dull red brown, softly struck in parts, nearly uncirculated.*

\$250

1603*

George V, 1923 London die. *Glossy brown with hints of red, good extremely fine.*

\$300



1608*

George V, 1929 London die. *Dark and light lilac red tone, nearly uncirculated.*

\$250

1604*

George V, 1923. *Extensive peripheral die breaks on obverse, cleaned brown, otherwise nearly uncirculated.*

\$250



1609*

George V, 1930 Indian die. *Nearly fine and rare.*

\$15,000

1605*

George V, 1925. *Has been cleaned and now re-toning, minor hairlines on both sides otherwise attractive extremely fine or better and rare thus.*

\$2,000



1610*

George V, 1930 Indian die. *Some old pitting, granular on both sides, reverse rim knock at 7 o'clock otherwise fine/good fine and rare.*

\$12,500

1606*

George V, 1925. *Even brown patina, nearly extremely fine.*

\$500



1611*

George V, 1931 Indian die. *Considerable mint red, nearly uncirculated and scarce.*

\$700



1612*
George V, 1933/2 overdate. *Has been cleaned and re-toning otherwise good extremely fine and very rare in this condition.*

\$750



1617*
George VI, 1946. *Beautiful brown and red mint bloom, uncirculated and rare in this condition.*

\$3,500



1613*
George V, 1934. *Small 3mm scratch behind King's head, almost full mint red, virtually uncirculated.*

\$400



1618*
George VI, 1946. *Brown patina with some traces of mint red, minor reverse rim bruise at 9 o'clock, otherwise nearly uncirculated and rare in this condition.*

\$3,000



1614*
George VI, 1938. *Attractive red and lilac tone, uncirculated.*

\$100



1619*
George VI, 1946. *Red and brown, nearly uncirculated and rare in this condition.*

\$1,500



1615*
George VI, 1940 K dot G. *Cleaned of surface patina otherwise nearly uncirculated and rare in high grade.*

\$100

HALFPENNIES



1616*
George VI, 1941 K dot G. *Red and brown uncirculated.*

\$250



1620*
George V, 1911. *Partial mint red, good extremely fine.*

\$250



1621*
George V, 1912H. Red and dark brown, uncirculated.
\$500



1626*
George V, 1918I. Struck from clashed dies, cleaned of surface patina otherwise nearly uncirculated and attractive, rare in this state.
\$750



1622*
George V, 1913. Brown and lilac red toned uncirculated.
\$1,250



1627*
George V, 1919. Red and brown uncirculated.
\$750



1623*
George V, 1914. Partial light toning on obverse, otherwise full mint red, uncirculated.
\$750



1628*
George V, 1920. Cleaned but attractive nearly uncirculated.
\$200



1624*
George V, 1914H. Full original mint red, toned on high points, choice uncirculated and rare in this condition, one of the finest known.
\$3,000



1629*
George V, 1921. Approximately 75% mint red, soft strike on obverse, uncirculated.
\$150



1625*
George V, 1915H. Cleaned and polished otherwise good extremely fine and rare in this state.
\$500



1630*
George V, 1923. Good very fine.
\$4,000



1631*
George V, 1923. *Diagnostic peripheral die breaks on both sides, somewhat rubbed otherwise very fine or better with nearly eight pearls, rare in this condition.*

\$3,000



1632
George V, 1923. *Diagnostic peripheral die breaks on either side, high rims, good very fine and rare in this condition.*

\$2,500



1633*
George V, 1923. *Slight lamination on obverse otherwise very fine.*

\$2,500



1634*
George V, 1925. *Cleaned of surface patina, obverse peripheral die breaks at 9 and 11 o'clock, nearly uncirculated and rare in this condition.*

\$200



1635*
George V, 1926. *Some mint red in obverse legend, 85% mint red on reverse, extremely fine.*

\$150



1636*
George V, 1927. *Attractive red brown uncirculated.*

\$800



1637*
George V, 1927. *Full mint red, uncirculated.*

\$250

1638
George V, 1932, 1933 and 1936. *The first dull misty tone, others cleaned, nearly uncirculated. (3)*

\$90



1639*
George V, 1936. *Nearly uncirculated; red uncirculated. (2)*

\$150



1640*
George VI, 1939 kangaroo reverse. *Brown and red, slight lamination, otherwise nearly uncirculated.*

\$650



1641*
George VI, 1939 kangaroo reverse. *Brown and red, nearly uncirculated.*

\$500

1642
George VI, 1943 (2), 1944. *The first two coins nearly uncirculated and uncirculated, the latter with almost full blazing mint red, the last coin with trace of mint red, nearly uncirculated and scarce. (3)*

\$120