

MISCELLANEOUS



293*
Australia, Queen Victoria, sovereign, 1894 Melbourne, in 18ct gold pendant frame with loop suspension (tot wt 10.55g). *Contact marks from wearing, otherwise fine.*

\$430



294*
Australia, George V, sovereign, 1913 Melbourne, inset in the lid of a vintage mahogany turned box (W77xH47cm), used as rouge box or trinket box. *Very fine.*

\$400



lot 3592 part

295*

Australia, 1927 Canberra florin, reverse enamelled and brooch pin fitted to obverse; another voided reverse with obverse shaved smooth and brooch pin fitted; another with Parliament House and date 1927 cut from a florin and fitted to a boomerang inscribed 'Ruby', the reverse shaved smooth and a brooch pin and safety chain fitted; a ring made from the outside edge of a penny with the obverse legend visible on inside of band; a hand-made silver (?) fob with raised shield in centre and a horse and jockey at top; crossed pick and spade miner's brooch with Sth Africa on spade, brooch pin missing and gold plating worn; St Andrews Ambulance Association 1882 membership badge no.S992, in silver, on short length of silver fob watch chain. *Some enamel missing from first, otherwise fine - very fine.* (7)

\$100

296

Australia, Australian Taxation Office, 2010, 20c coins in packs signed by Commissioner (5) (not in McD.); Telecom special limited edition phonecards for Disney, Donald Duck and Mickey Mouse mint set of 2, each a \$2 phonecard on a card (20 cards); 1960s Kodak Instamatic Movie Projector in carry case. *Uncirculated, camera fine.* (lot)

\$100

297

German New Guinea, gilt reproductions of ten and twenty mark issues together with an aluminium medal with inserts in gilt of German New Guinea five mark pieces (with certificate); also, 2 high silver content bars of Tibetan silver, total weight 280g. *Uncirculated.* (5)

\$120



298*

South Africa, Republic, krugerrand, 1982 (KM.73) with jeweller set ruby in a starburst design on the reverse. *Small scratch near ruby, otherwise uncirculated.*

\$1,600



299*

Yemen, al-Mutawakkil Yahya bin Muhammad (Iman Yahya), silver Ahmadi riyal, AH1322 (1904) (KM.Y.7), with fitted ornamental scroll mount in silver. *Toned, very fine.*

\$70



part

300*

Coin jewellery, Australia, 1910 florin, obverse shaved and with voided reverse design with suspension loop; Great Britain, 1886 farthing, voided around Queen Victoria's head, with suspension hole; 1862 penny with young head Queen Victoria silver threepence inset into obverse, with brooch pin fitting on reverse; 1967 penny with enamelled reverse; British India, silver one rupee, 1890, with selective enamelling on reverse and brooch pin fitting on obverse; Ancient Rome, silver denarius of Vespasian, c69-70AD, with suspension hole and loop fitted for wear as a pendant. *Very good - very fine.* (6)

\$150

301

Coin jewellery and accessories, includes Austrian silver florin, 1886, in fancy silver frame for wear as pendant; money clip fitted with Peruvian silver half sole, 1935; another money clip fitted with USA Indian head one cent, 1907; keyring with attached Australian 1929 penny; another featuring a USA Eisenhower dollar, 1976, encased in a plastic disc marked 'John F. Kennedy Center For The Performing Arts'; Australian pennies, 1961 and 1963 with pierced hole and fitted to clip-ring; also watch chain fob in brass featuring three fleur-de-lis on red enamel shield; pocket watch key; brass fob chain clips (2); empty plastic matches case for Hofbrauhaus Munchen (Munich, German beer house dating back to 16th century); Radius gent's quartz wristwatch, missing part of wrist band. *Fine - very fine.* (12)

\$50

302

Cases, for sovereigns, half sovereigns and other coins, assorted designs (16) in sterling silver (1), gilt, nickel and leather; leather wallets, purses and stamp wallets (18). *Good - very fine.* (34)

\$200

303

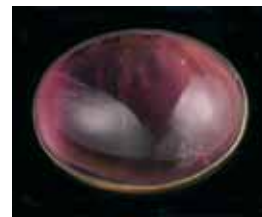
Vintage items, combined sovereign and half sovereign case in brass and nickel-silver (closing clasp broken); silver-plated sewing scissors; small leather coin purse with silver-plated fittings and small chain; sugar spoon stamped 800PK; racehorse and jockey brooch, in case (some enamel loss); gilt tin case with clear plastic hinged-lid; small enamelled and gilt, hinged-lid box (for cigarettes?), made in Firenze (Florence, Italy); small ceramic circular, hinged-lid case (for pills?) with decorative olden-times scene on lid of ladies in woods, gilt worn from rims; rolled gold, machine turned pencil (pocket clip broken); shirt studs and damaged modern silver jewellery and other items. *Poor - very fine.* (lot)

\$50

304

Engelhard Australia, one tenth troy ounce 999.9 fine gold medallionic ingots (19mm), obverse, company logo, reverse, map of Australia. *In card packs of issue, uncirculated.* (4)

\$600



305*

Natural Amethyst, pale mauve cabochon cut, oval (29.5x22x8.6mm; approx 80ct), set in a bezel stamped 935 with clip fitting for wear. *Extremely fine.*

\$350

Certified valuation in July 2001 \$1,150.



306*

Smoky Quartz, emerald step cut (37.5x33x23.4mm; 219.47ct). *Uncirculated.*

\$300

Certified valuation in July 2001 \$1,295.



307*

Synthetic corundum imitating Alexandrite, oval mixed brilliant cut (23.4x16.7x8.6mm; 27.86ct). *A few tiny edge chips from wearing, otherwise extremely fine.*

\$90

Certified valuation in July 2001 \$205.

308

Blue sapphire, approx half a carat round cut loose stone.
Uncirculated.

\$50



309*

Ladies dress ring, features inset central diamond (approx 75 points) surrounded by two rows of small diamonds and two rows of diamonds along each shank, in 18ct white gold (tot wt 9.47g). *Very fine.*

\$1,500



310*

Ladies diamond and amethyst dress ring, in 14ct gold (tot wt 4.2g), featuring a 60 points centre diamond encircled with six amethysts, each of 50 points, and two small side diamonds. *Good very fine.*

\$1,200



311*

Diamond ring, in platinum (tot wt 13.59g), a one-off custom designed ring featuring a five-pointed star with an individually shaped diamond in each angle of the star. *In original case of Cerrone, good very fine.*

\$1,200



312*

Ladies pearl and diamond dress ring, in 18ct white gold (tot wt 11.45g), features a pearl on top of a wide band featuring four rows, all pave set with brilliant cut diamonds, the two outside rows with 19 diamonds and the two inside rows each with 8 diamonds on each side, a total of 70 small diamonds. *Nearly uncirculated.*

\$600

313*

Diamond dress ring, in 18ct gold (tot wt 9.8ct), features central 10 point brilliant cut diamond with three stepped down tiers at the sides, each with 4 smaller diamonds, overall totalling .67 of a carat. *Uncirculated.*

\$600



314*

Ladies dress ring, in 18ct gold (tot wt 13.5g), features a frosted finish heart with dip and join in centre inset with multiple recessed diamonds. *Uncirculated.*

\$550



315*

Ladies dress ring, wide band in 18ct white gold (tot wt 12.24g), across the centre decorated with five rows of alternating black and white diamonds, 6 small diamonds in each row. *Extremely fine.*

\$500



316*

Ladies dress ring, in 18ct gold (tot wt 12.35g), features a wide top pave set with five rows of diamonds, three rows of white and two rows of black. *Uncirculated.*

\$500



317*

Diamond ring, in 18ct yellow gold (tot wt 3.0g), features claw set round brilliant cut .30 carat diamond (colour G/H clarity SI 1), leaf shoulders each with 7 channel set round brilliant cut diamonds (colour H clarity SI 1), ring size J. *Uncirculated.*

\$500

Together with registered jewellery valuation certificate dated 2013 with estimated replacement value of \$2,760 for insurance purposes only.



318*

Diamond ring, in 18ct two tone gold (tot wt 3.3g), features 4 princess cut diamonds (colour G clarity VS 1), invisible set in a white gold coronet, ring size L. *Nearly uncirculated.*

\$500

Together with registered jewellery valuation certificate dated 2013 with estimated replacement value of \$2,400 for insurance purposes only.



323*

Unisex diamond ring, in 18ct white gold (tot wt 7.2g), features raised centre around the band and a yellow gold diamond shape box on top set with four diamonds. *Uncirculated.*

\$350



319*

Diamond dress ring, in 18ct white gold (tot wt 6.85g), features a 25 point brilliant cut diamond centred between two high and open bands decorated with small diamonds. *Uncirculated.*

\$450



324*

Engagement ring, in 18ct gold (tot wt 5.0g), features yellow gold band melding into white gold near top and with a band set brilliant cut 20 point diamond in the centre and two small inset diamonds at each side, down the shank. *Extremely fine.*

\$350



320*

Ladies diamond ring, in 18ct gold (tot wt 9.68g), features wide, slightly oval at the side, band inset across the top with 11 baguette cut diamonds. *Uncirculated.*

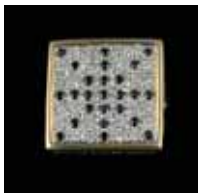
\$450



325*

Ladies dress ring, in 18ct white gold (tot wt 9.55g), features a wide band and across the top are nine vertical rows of 3 and 2 recesses, each recess filled with a diamond. *Uncirculated.*

\$350



321*

Ladies dress ring, in 18ct gold (tot wt 9.65g), features a flat, square top pave set with diamonds and with a star (asterisk-like) design picked out with pave set black diamonds. *Uncirculated.*

\$400



326*

Ladies diamond ring, in 18ct gold (tot wt 6.97g), features 10 princess cut diamonds set within a recess across the top. *Uncirculated.*

\$300



322*

Sapphire and diamond ring, in 9ct yellow gold (tot wt 5.56), features 3 rub over set round cut pink sapphires (tot 1.20 carats) and 2 round brilliant cut diamonds (colour I clarity SI 2), total of .20 carats, ring size M. *Uncirculated.*

\$400



327*

Ladies diamond ring, in 18ct gold (tot wt 6.1g), features conjoined bands of yellow, white and rose gold, each inset with five small brilliant cut diamonds. *Extremely fine.*

\$300

Together with registered jewellery valuation certificate dated 2013 with estimated replacement value of \$2,050 for insurance purposes only.



328*
Diamond dress ring, in 18ct white gold (tot wt 2.9g), features large, angled diamond shape, voided in centre and with a 20 point brilliant cut diamond seated in the void, the surrounding diamond shape is pave set with 10 small diamonds at the sides. *Uncirculated.*

\$300



329*
Diamond ring, in 9ct yellow gold (tot wt 1.98), features 3 bezel set princess cut diamonds (colour H clarity SI 1), total of .35 carats, ring size L. *Uncirculated.*

\$300

Together with registered jewellery valuation certificate dated 2013 with estimated replacement value of \$2,050 for insurance purposes only.



330*
Engagement ring and wedding band fitted set, in 18ct gold, the engagement ring (tot wt 2.76g) claw set with four brilliant cut diamonds, stepped in a circle (1x25 points, 3x2-4 points), the wedder (2.86g) inset across the top with 11x2 point diamonds. *Good very fine. (2)*

\$250



331*
Engagement ring and wedding band fitted set, in 18ct gold, the engagement ring (3.38g) claw set with a baguette cut diamond of 25 points, the wedder (2.87g) a plain band. *Good very fine. (2)*

\$250



332*
Ladies dress ring, in 18ct gold (tot wt 5.0g), features a wide band and inset across the top nine stones including a central baguette cut emerald, and at each side a princess cut diamond, blue sapphire, diamond, blue sapphire. *Extremely fine.*

\$250



333*
Ladies diamond ring, in 18ct gold (tot wt 4.2g), features a plain tapering band with 5 brilliant cut diamonds inset, the central one of 10 points and the two at each side in reducing size. *Uncirculated.*

\$200

334
Eternity ring, in 18ct white gold (tot wt 4.7g), band decorated with 7 small diamonds. *Extremely fine.*

\$200



335*
Ladies diamond ring, in 18ct gold (tot wt 5.12g), features a wide, tapered band, frosted finish at the top and with two recessed rows of 9 diamonds each. *Good extremely fine.*

\$200

336
Ladies diamond ring, in 18ct gold (tot wt 3.25g), features across the top a row of 13 recess set diamonds. *Uncirculated.*

\$200



337*
Ladies diamond ring, in 18ct gold (tot wt 2.45g), features across the top a row of 15 recess set diamonds. *Uncirculated.*

\$200



338*
Ladies diamond ring, in 18ct white gold (tot wt 2.12g), features across the top a row of 19 recess set diamonds. *Uncirculated.*

\$190



339*
Ladies dress ring, in 18ct gold (tot wt 4.10g), features an heart shaped top bordered in black and in the centre is pave set with 10 diamonds. *Uncirculated.*

\$170



340*

Ladies diamond ring, in 18ct white gold (tot wt 2.78g), features across the top a row of 6 recess set diamonds. *Uncirculated.*

\$160



341*

Ladies diamond ring, in 18ct gold (tot wt 2.60g), features across the top a row of 14 recess set diamonds. *Uncirculated.*

\$150



342*

Ladies dress ring, in 18ct white gold (tot wt 3.39g), features a round top bordered in black and in the centre is pavé set with 7 diamonds. *Uncirculated.*

\$130



343*

Ladies diamond ring, in 18ct gold (tot wt 1.9g), features a yellow gold band with split shank and one side coloured white gold, between the shanks at the top is recessed 5 diamonds. *Extremely fine.*

\$120



344*

Ladies diamond ring, in 9ct white gold (tot wt 2.05g), features a split shank with swirl at top and this decorated with 23 diamonds. *Extremely fine.*

\$110



345*

Diamond ring, in 18ct white gold claw set with 25 point diamond with two point diamond at sides on small decoration on shank, (tot wt 1.54g). *Extremely fine.*

\$100



346*

Eternity ring, in 18ct gold (tot wt 1.55g), pavé set with 14 small diamonds. *Uncirculated.*

\$100

347

Ladies fashion dress ring, with double maroon rubber band with 18ct gold fittings, the centrepiece with 4 small pavé set diamonds (tot wt 5.7g); another similar but different design with 9 small pavé set diamonds in the centrepiece. *As new. (2)*

\$100

348

Eternity ring, in 9ct white gold (tot wt 1.98g), decorative pattern on band decorated with 9 small diamonds; also wedding band in 9ct white gold (2.04g). *Extremely fine. (2)*

\$90

349

Diamond ring, in 18ct gold claw set with three diamonds featuring a central 10 point diamond and a small diamond at each side, old style setting, and rhodium plated across top (tot wt 2.4g). *Fine.*

\$80

350

Eternity ring, in 9ct rose gold (tot wt 1.56g), pavé set with 15 small diamonds. *Uncirculated.*

\$80



351*

Ladies dress ring, in 9ct white gold (tot wt 3.33g), features a row of 8 diamond-like stones in a recessed setting across top. *Extremely fine.*

\$70

352

Eternity ring, in 9ct gold (tot wt 1.8g), band decorated with 11 small diamonds. *Extremely fine.*

\$60

353

Eternity ring, in 9ct white gold (tot wt 1.53g), pavé set across the top with 15 small diamonds. *Extremely fine.*

\$60



354*
Ladies pearl and diamond dress ring, in 18ct gold (tot wt 11.58g), features a white pearl in the centre of an array of swirls mostly decorated with 16 small diamonds to give a brilliant effect. *Uncirculated.*

\$600



355*
Sapphire ring, in 18ct two tone gold (tot wt 2.88g), features oval cut (5x4mm) blue sapphire, set in a yellow gold bezel and around pave set with 21 brilliant cut diamonds in white gold on one shoulder and with 4 channel set round brilliant cut diamonds on the other shoulder (diamonds are colour H clarity SI 1), ring size N. *Uncirculated.*

\$450

Together with registered jewellery valuation certificate dated 2013 with estimated replacement value of \$2,150 for insurance purposes only.



356*
Ladies dress ring, in 18ct gold (tot wt 6.5g), features variation of an infinity twist decorated with smoky quartz and diamonds along and between the twists. *Uncirculated.*

\$400



357*
Ladies sapphire dress ring, in 18ct white gold (tot wt 7.7g) with tapered baguette cut blue sapphire of approx 50 points in centre and stepped down the shank on each side are two baguette cut diamonds. *Extremely fine.*

\$350



358*
Ladies opal dress ring, in 18ct gold (tot wt 6.24g), features circular white opal in centre with 3 diamonds below and at the sides at top of shank. *Uncirculated.*

\$300



359*

Ladies emerald dress ring, in 18ct gold (tot wt 7.07g), features an oval cut emerald in the centre of an oval platform and at the each side in a raised section of the shank are 4 diamonds. *Uncirculated.*

\$300



360*

Ladies dress ring, in 18ct gold (tot wt 6.3g), features conjoined bands of yellow gold and white gold and at the top the yellow gold band projecting upwards and claw set along this is a ruby, a diamond and an emerald. *Uncirculated.*

\$300



361*

Ladies dress ring, in 18ct gold (tot wt 5.45g), features an oval cut citrine within a swirl formed by the shank and this decorated around the top with diamonds. *Uncirculated.*

\$250



362*

Ladies citrine dress ring, in 18ct gold (tot wt 6.45g), features 3 carat emerald cut citrine with a border of small diamonds. *Uncirculated.*

\$250



363*

Ladies tanzanite dress ring, in 18ct white gold (tot wt 3.75g), features a half carat tanzanite set in the centre of a square band of small diamonds. *Uncirculated.*

\$250



364*
Black pearl dress ring, atop an 18ct gold band with swirls down the sides of the shank (tot wt 8.2g). *Extremely fine*.
\$250



365*
Amethyst dress ring, in 18ct gold (tot wt 5.43g), features 2 carat round cut amethyst set in the centre of a band of small diamonds. *Extremely fine*.
\$250



366*
Ladies diamond-like ring, in 18ct white gold (tot wt 6.3g), features a tiered circular top with a diamond-like stone in centre. *Uncirculated*.
\$220



367*
Ladies sapphire ring, in 18ct gold (tot wt 5.94g), features a created pink sapphire in the centre and 5 diamond-like stones at each side along the shank. *Uncirculated*.
\$220



368*
Ladies sapphire dress ring, in 18ct white gold (tot wt 3.72g), features pink sapphire of approx half a carat in square frame bordered with 12 small diamonds. *Uncirculated*.
\$200



369*
Ladies ruby dress ring, in 18ct gold (tot wt 5.07g), features an oval cut created ruby of approx .75 carat with a trillion cut diamond at each side of the shank. *Uncirculated*.
\$200



370*
Ladies sapphire dress ring, in 18ct gold (tot wt 5.05g), features a round cut dark blue sapphire of approx .75 carat in a round band setting. *Uncirculated*.
\$200



371*
Ladies dress ring, in 18ct gold (tot wt 3.85g), features approx 60 point princess cut peridot in square setting with 12 small diamonds around. *Very fine*.
\$180

Peridot is the birth stone for August.

372

Ladies fashion dress rings, with double black rubber bands with 18ct gold fittings, the centrepiece of each different, one features a heart, another an oval and the other a square, all decorated with small pave set diamonds (tot wt 4.76g; 4.78g; 5.38g). *As new*. (3)
\$150

373

Dress rings, rhodium plated, set with a 4.0ct solitaire cubic zirconia; another, rhodium plated sterling silver, set with a number of small diamonds (said to total .33ct); another, sterling silver plated in 14ct yellow gold, set with a 6.5ct smoky topaz surrounded by small diamonds; also, a small bottle containing gold leaf, probably used in signwriting. *As new*. (4)
\$150



374*

Ladies dress ring, in 18ct white gold (tot wt 3.8g), features a square at top bordered in black and in the centre is pave set with 9 diamonds. *Uncirculated*.
\$150



375*

Ladies emerald dress ring, in 18ct white gold (tot wt 2.9g), features an oval cut created emerald of approx 1.75 carats raised above a border of flat cut diamonds. *Uncirculated*.
\$150

376

Ladies citrine dress ring, in 18ct white gold (tot wt 8.23g), features claw set emerald cut citrine (12x16mm) of approx 8 carats with small diamond at top of shank on each side. *Uncirculated.*

\$120



377

Ladies fashion dress rings, one with double maroon rubber bands with 18ct gold fittings, centrepiece with polished grey stone with small diamonds at two sides, the other of similar type but with double purple bands. *Uncirculated. (2)*

\$100

383*

Ladies fashion dress ring, thick, orange plastic band with 18ct oval, gold centrepiece featuring polished yellow stone with a band of pave set small diamonds around (tot wt 15.3g). *Extremely fine.*

\$70

378

Ladies fashion dress rings, one with double black rubber bands with 18ct gold fittings, with centrepiece of a square decorated with small pave set diamonds (tot wt 5.38g); another but with double green rubber bands with 9ct gold fittings, the centre with a square, polished white stone with a band with 3 small diamonds at two sides (tot wt 6.36g). *As new. (2)*

\$100



384*

Ladies fashion ring, flexible golden two coil band with 8 carat amethyst bezel set on top. *Uncirculated.*

\$70



379*

Ladies fashion ring, flexible golden two coil band with pink sapphire in a square bezel on top and with small diamonds as a border. *Uncirculated.*

\$100



385*

Ladies fashion ring, flexible golden five coil band with white pearl set on top. *Uncirculated.*

\$60



380*

Ladies fashion ring, flexible golden two coil band with small square bezel on top pave set with 9 diamonds. *Uncirculated.*

\$80

386

Pearl dress rings, both with identical flexible, fit-all sizes rings, the first a black pearl with gold-like band and the other a grey pearl with a silver-like band. *Uncirculated. (2)*

\$60



381*

Ladies fashion ring, flexible golden two coil band with 8 carat blue topaz bezel set on top. *Uncirculated.*

\$70



387*

Ladies fashion ring, flexible silvery two coil band with oval bezel on top and this pave set with multiple diamonds. *Uncirculated.*

\$60



382*

Ladies fashion dress ring, thick, black plastic band with 18ct oval, gold centrepiece featuring polished grey stone with a band of pave set small diamonds around (tot wt 11.3g). *Extremely fine.*

\$70

388

Ladies dress ring, in 9ct gold (tot wt 1.8g), features 3 small pink sapphires with small white sapphires between, both of these with crack only noticeable under magnification, gutter set between separated band. *Very fine.*

\$50

389

Dark bluestone dress ring, (howlite?) dark blue, polished, oval stone set into a shaped 18ct rolled gold ring. *Extremely fine.*

\$50

390

Wedding ring, in 18ct yellow and white gold (5.9g), features yellow gold band with floral decorated white gold wide centre band. *Very fine.*

\$220

391

Wedding ring, in 9ct gold (5.2g) with raised scroll pattern between plain edges. *Very fine.*

\$100

392

Wedding bands, two types, both in 9ct gold, one a wide plain band (5.5mm; 3.43g), the other with a star pattern around the centre (5mm; 2.28g). *Very fine.* (2)

\$100

393

Wedding ring, in 9ct gold (2.7g) with patterned edges and plain centre. *Good very fine.*

\$60



394*

Diamond bracelet, in 18ct gold (tot wt 36.7g), features 10 flowers each with five frosted petals with polished edges and in the centre of each is a bezel set diamond of approx 10 points (making a total of 1 carat of diamonds) (16cm long). *In timber bracelet case, extremely fine.*

\$2,000



395*

Ladies rose gold bracelet, (9ct; 34.14g; approx 16cm), features long links between clumps of circular links with provision at each clump for fitting charms, heart shaped clasp with small diamond in centre. *Good very fine.*

\$700



396*

Gold bracelet, mariner link with textured highlights, in 18ct gold (16.84g), made in Italy. *Extremely fine.*

\$600



397*

Gold bracelet, flat Cuban link gold bracelet (9ct; 10.3g). *Extremely fine.*

\$200



398*

Ladies gold bracelet, (9ct; 10.15g; approx 16cm), features belcher links and voided, heart shaped clasp with small diamond in centre of a small heart shape on both sides, with safety chain. *Extremely fine.*

\$200



399*

Ladies rope bracelet, in 18ct gold (3.17g; 20cm). *Very fine.*

\$150



part

400*

Bracelets, probably Indian manufacture, one with engraved looped design (38.60g); another with twisted wire heavy looped design (111g); another with plain wired design mounted on plain internal surface (179g); together with a silver compact case with mirror within (109g). *Fine - very fine.* (4)

\$200

401

Tiffany & Co heart bracelet, open heart at middle is embossed on one side at the bottom, 'Tiffany & Co' and under this '925'. *Extremely fine.*

\$150

402

Silver charm bracelet, heavy links in sterling silver (approx 15cm), features nine .800 silver charms for Leaning Tower of Pisa, a duck, Sydney Harbour Bridge, kangaroo, penguin, coach lamp, poodle, Bambi, falcon bird, and with a voided and floral decorated heart securing clip, with safety chain (tot wt 94.5g). *Very fine.*

\$120

403

Men's chunky silver bracelet, heavy Cuban link in sterling silver (approx 22cm; 75.2g). *Very fine.*

\$100



404*

Princess cut citrine pendant, stone (19x22mm) set in the centre of a 15ct gold diamond shaped pendant (3.5x6cm). *Very fine.*

\$150



405*

Gold chain and diamond pendant, features a 9ct gold chain (40cm) and a small, rectangular gold ingot with enamelled front inset with a diamond and certified below as .05 carats, colour H, clarity VVS and cut Brilliant (tot wt 4.15g). *Very fine - extremely fine.*

\$100

406

Flower pendant, in 9ct gold, decorated with green stones (tot wt 1g); 18ct gold ring with centrepiece of a greenstone decorated heart (tot wt 1.3g); open at centre fish tail ring in 9ct gold with star at opposite end and this decorated with diamond-like stone (tot wt 0.99g). *The second ring bent to shape of wearer's finger, otherwise very fine - extremely fine.* (3)

\$80



407*
Opal pendant, irregular shaped triplet black opal (11x19mm) in 18ct gold frame (tot wt 3.0g). *Extremely fine.*

\$70



408*
Opal pendant, oval triplet black opal (11x19mm) in 9ct gold frame (tot wt 2.7g). *Extremely fine.*

\$50

409
Vintage pendant and brooch set, by Miracle Jewellery, both set with large oval polished purple and white striped natural stone. *Very fine.* (2)

\$50

410
Gold necklace, flat curb style in 9ct gold (12.62g; 56cm). *Very fine.*

\$250



411*
Pearl necklace, single strand (55cm), graduating size pearls with sterling silver and single pearl clasp. *Extremely fine.*

\$300

412
Black pearl necklace, two single strands (each 40cm), evenly matched size pearls, no clasps, length of cotton cord only at each end of each strand. *Extremely fine.*

\$150

413
'New' freshwater pearl necklace, multi-coloured and various shapes on silk thread necklace (156cm), for wear as long single or standard double row. *As new.*

\$140

414
Pearl necklace, (42cm), with uniform sized pearls; also pearl and red stone earring set for pierced ears, in 9ct gold (tot wt 5.33g). *Necklace string repaired, otherwise very fine.* (1 + set)

\$50



415*
Tiffany heart tag toggle necklace, (40cm; 65.5g) in sterling silver, heart tag with inscription 'Please Return/To/Tiffany & Co/New York/925' on one side and '(C) Tiffany & Co,925' on the other, the toggle marked, 'Tiffany & Co' on one side and, '925' on the other. *Extremely fine.*

\$200

416
Heavy silver necklace, flat Cuban link necklace in sterling silver (89.7g; 56cm). *Good very fine.*

\$100

417
Gucci pattern chain, in silver (80cm) with fitted modernistic silver conjoined double cylinder pendant (tot wt 52.1g). *Toned very fine.*

\$50

418
Jewellery, assorted necklaces in a large box, custom made all shapes and sizes. *As new.* (100)

\$200

419
Jewellery, assorted necklaces in a large box, custom made all shapes and sizes. *As new.* (100)

\$180

420
Jewellery, assorted necklaces in a large box, custom made all shapes and sizes. *As new.* (40)

\$60

421
Cameo brooches, all oval in shape, one features a naked lady seated with a cherub beside her (38x42mm), the others all feature a lady with vintage hairstyle (33x40, 28x33, 23x30mm), all are set in metal frames, two of these marked 800 (silver), one is 12K rolled gold and one unmarked. *Fine - very fine.* (4)

\$100



422*

Antique brooch, in silver marked for Chester 1913 by maker, 'M&J', features the sentimental symbols as found on Mizpah brooches, namely a cross (faith), an anchor (hope) and a heart (charity), and at sides is a gold star inside a circle of ship's rope, on back of brooch bar inscribed, 'N.E.C.T. July 19??'. *Very fine.*

\$50

423

Garnet earrings set, in 14ct gold (tot wt 4.12g), for pierced ears, missing small butterfly push-ons; also amethyst dress ring in 14ct gold (tot wt 3.76g). *Very fine.* (2)

\$150



424*

Earrings set, for pierced ears, in 18ct white gold features plain bands with outside half of each band pavé set with 16 small diamonds, (tot wt 3.2g). *Extremely fine.*

\$100

425

Earrings set, features black pearls design; single 50 point diamond-like earring; single floral design earring in 9ct gold (tot wt 1.38g) decorated with two pink stones and two diamond-like stones, all for pierced ears. *Extremely fine.* (set + 2 singles)

\$50



426*

Earrings set, for pierced ears, features open plumeria flowers in sterling silver and 14ct gold, the small gold flowers with diamond in centre, stamped 'Na Hoku Ster 14kt', (tot wt 6.24g). *Extremely fine.*

\$60

The Hawaiian plumeria flower has five petals which represent sincerity, faith, devotion, aspiration and surrender.

427

Jewellery, assorted earrings in a box, custom made all shapes and sizes. *As new.* (60 pairs)

\$50

428

Gold cufflink, features abacus (working) design marked 585 (14ct; 5.62g); pair of blue and gilt love knot earrings. *Extremely fine.* (1+pair)

\$150



part

429*

Collection of marcasite jewellery, mostly in metal but noted one brooch and a pair of earrings in sterling silver, overall includes bracelet, brooches (11, two with coloured decoration), and earring sets (3 sets), the brooch designs include a dragon, ribbon bow, flowers (5), ships (2) and others. *A few missing a marcasite or two, otherwise very fine - extremely fine.* (13 + 3 sets)

\$300



430*

Vintage Krementz jewellery, set of cuff bracelet and pendant on chain, rose and yellow gold filled. *Good very fine.* (2)

\$100

431

Silver jewellery, and some costume jewellery items, noted rings (6) two of these gold plated and with stones; pearl pendant; necklaces (4) one with heart shaped stones; bracelets (3); bangle; other part earring sets, chains (broken or missing clip ring), watch (missing bits) and other odd pieces. *Fine - extremely fine.* (lot)

\$120

432

Silver ladies jewellery, includes Pandora bracelet; other bracelets (2), one with damaged clasp (includes broken section that can be repaired); bangle; necklaces (5, various types and lengths); pendant; small, thick loop earrings for pierced ears (overall tot wt 114.43g). *Fine - very fine.* (11)

\$100

433

Ethnic Indian style silver choker, also 9ct gold earrings (1.09g); other single earrings (3) one marked 375 (.7g) and one marked 14K (2.3g); Fiji one shilling bracelet, missing small loop at one end; silvered and bejewelled violin design brooch; polished blue stone silver ring; other bits and pieces. *Good - very fine.* (lot)

\$90

434

Silver toned clutch purse, engraved and decorated surface with working clasp and yellow satin fabric with chain, stamped with patent mark, size 133x57x17mm; together with a Chatelaine purse with engraved floral etching with worn internal fabric, together with a chain attached. *Fine - very fine.* (2)

\$120

435

Silver clutch bag, vintage European circa Edwardian - WWI period, floral etched clasp with a red stone, blue silk inside engraved 15 IV, 1928 with name, stamped with patent mark, total weight (470g), size 200x77x23mm and attached chain; together with a silver antique vanity mirror with BJS monogram, mirror diameter 140mm, length 270mm. *Fine - very fine.* (2)

\$120

436

Costume jewellery, a large quantity including necklace in sets with earrings and ring, another attractive diamond-like necklace, various other necklaces; pendant/necklaces sets, brooches, earrings, some singles including Australian George V 1934 sixpence, attractive gold-like mesh bracelet, other polished stone decorated bracelets, two with matching earrings, other, bracelets. *A few pieces need minor repairs, otherwise fine - extremely fine.* (approx 40)

\$100

437

Costume jewellery, by Pierre Cardin, includes pendant on chain, and earrings sets (2 sets), modern style in silvered metal and with diamond-like stones; earrings set by Mestige each with single diamond like stone in silvered metal; all earrings for pierced ears; unusual brooch featuring two hands that separate when brooch is opened and the left hand has a diamond-like ring on the fourth finger. *The last extremely fine, the rest uncirculated.* (5)

\$50

438

Costume jewellery, noted brooches (5) one featuring pearl decoration but with one pearl missing, oval locket brooch with enamelled dog's image on face, with pin backed bar suspender; silver framed 1966 silver fifty cents pendant; perfume bottle in style of a metal pocket watch suspended on neck chain (80cm); Xmarine ladies quartz wristwatch in grey and gold coloured case with matching bracelet; Rolex ladies wristwatch, replica (dial glass cracked), with leather band. *Very fine - extremely fine.* (10)

\$50

439

Costume jewellery, includes an impressive necklace and matching earrings, gold coloured decorated with diamond-like stones; bracelet decorated with chunky coloured plastic shapes; large gold coloured bracelet; pearl necklace loose at one end; green stone, emerald-like ring, in case; stone pendant fitted into silver-like clasp; animal brooches (3, dog, rooster, and 3 deers); bell pendant; other odds & ends, mostly damaged. *Poor - very fine.* (lot)

\$50



440*

Gent's hunter pocket watch, in 18ct gold (tot wt 115.73g), machine turned case, hallmarked for Birmingham 1886, white dial with black Roman numerals, around outside is a navigation chronograph numbered up to 300 in increments of 25 in Arabic numerals, also a separate seconds sub dial with Arabic numerals, the works cover bears the British Royal arms and by appointment, W.Bennett & Co, London, the case and works are both numbered 45166. *Not working, otherwise very fine.*

\$1,200



441*

Demi-Hunter pocket watch, by DF&C (Dimier Freres & Cie) in gold (18ct; tot wt 31.61g; 33mm) with dark blue enamelled inlaid dial. *In working order, some blue enamel missing and dents in case, front and back, otherwise fine.*

\$250

442

Collection of pocket watches, includes half hunter in silver marked for London 1884, white dial with seconds dial, Roman numerals, keywind, reverse inscribed, 'In Memory Of 4th March 1883', dial with hairline crack; half hunter in gold plate, back marked, 'Specially made for W.G.Fletcher 11 Royal Avenue Belfast', white dial and seconds dial, Roman numerals, dial with cracks and glass loose, keywind, crown (winder) missing; ladies half hunter in silver, hallmarked Birmingham 1884, gold coloured decorative metal dial with Arabic numerals in red inside small windows, keywind, crown missing; ladies half hunter in silver, no maker's name, white dial with Roman numerals, winder missing; ladies hunter in silver, white dial marked B & Co, Roman numerals, no glass, hairline crack in dial, keywind; ladies half hunter in silver, white dial marked 'Little Marvel', Arabic numerals, key wind, glass loose; demi-hunter in silver with Roman numerals, white dial, works lid marked, 'Russells Limited, 18 Church Street, Liverpool' missing hands and glass; together with 6 watch keys. *Good - fine. (7 + 6 keys)*

\$150

443

Gent's gold filled full hunter pocket watch, c1920, by American Waltham Watch Co., machine turned and chased case (35mm), leaf pattern with centre shield for initials, subdial seconds watch, white dial, black Roman numerals, case no. 1090612, dial marked 'A.Saunders/George St./Sydney'; fob medal in sterling silver (50x34mm), marked for Birmingham 1912, engraved design of central crest and around this are the initials 'U N O / F C', reverse, unnamed, maker's mark 'H.S. & Son'. *Watch not working and minute hand loose, otherwise extremely fine; fob is extremely fine. (2)*

\$50

444

Half hunter pocket watch, in gold filled case, white dial, unbranded, with black Roman numerals and black hands, seconds dial with Arabic numerals, with attached fob chain made from braided leather and with brass fittings. *Appears to be in working order, glass missing and crack in dial at 10 o'clock, wearing to case, otherwise fine.*

\$50

445

Railroad half hunter pocket watch, Hampden Watch Co, size 18, in silveroid case, key wind (no key), white dial with Roman numerals, seconds dial with Arabic numerals. *Working order unknown, a small area of oxidation near and on suspension ring, otherwise very fine.*

\$50

446

Gent's half hunter pocket watch, Savolainen, oxidised silver screw-back case with gold plated floral design on reverse and decorative pattern around face, white dial with blue Arabic numerals, seconds dial with Arabic numerals, with fitted leather case. *Not in working order, Swiss Made at base of face nearly faded away, otherwise very fine.*

\$50

447

Gent's hunter pocket watch, Perret & Fils, Brenets, key wind, in machine turned silver case with featured design on front and back, the front with shield for inscribing initials, white dial with Roman numerals and also small Arabic numerals for seconds, also seconds dial with Arabic numerals, with silver watch chain with key attached. *Appears not to be working and missing glass cover, otherwise fine.*

\$50

448

Gent's hunter pocket watch, Elgin in machine turned rolled gold case with shield design on lid for inscribing initial's, white dial with Roman numerals, seconds dial with Arabic numerals, works cover inscribed, 'From Pearl/to Arthur/31.7.33', with a family photo glued inside back cover; lady's vintage Titus wristwatch, rolled gold, leather band, manual wind; lady's Citizen wristwatch, quartz, gold plated with matching bracelet; lady's Lorus wristwatch, quartz, gold plated, missing leather band; Keuffel & Esser Co, compass, cWW2 era, in hunter pocket watch style plated steel case. *The first with broken glass cover, the last with needle pointer dislodged and some plating worn off case, the last appears to work, the other either not working or working order not known, otherwise fine - nearly very fine. (5)*

\$50



449*

Gent's wristwatch, Omega Constellation, c1970s, steel and gold, automatic, day/date, Omega case (40x33mm) with gold dial and baton numerals, sweep seconds hand, original Omega bracelet, with two loose spare links. *Running, but cannot be guaranteed for accuracy, very fine.*

\$450



452

Mulco gent's wristwatch, manual with stainless steel circular case, white and silver dial with Arabic numerals at ten minute intervals, seconds subdial, also with Arabic numerals at the quarter hour marks, leather band; Seiko gent's wristwatch, 5 21J UFO automatic model 6119-5421, stainless steel case, silver-grey dial with bright silver baton markers, date window, with stainless steel link-style bracelet with fold-over clasp closer. *Fine - very fine. (2)*

\$50

450*

Omega gent's wristwatch, Chronostop c1968, manual wind in stainless steel with black dial, bar indicators, white hands and red seconds hand, stainless steel mesh-style bracelet. *Appears to be not working, otherwise very fine.*

\$100



453*

Longines, ladies wristwatch, rolled gold top, stainless steel back, in original case as sold by Longines, 'Flagship', in working order with spare bands. *As new.*

\$150



451*

Tag Heuer gent's wristwatch, Professional 200m Model WD-1210 00, quartz movement, with black dial and luminous indicators, seconds hand and day window, stainless steel bracelet. *In working order; bezel needs attention as it moves freely, otherwise very fine.*

\$100



454*

Ladies Cartier wristwatch, Tank Solo model 3170, quartz movement, stainless steel case with matching bracelet, white dial with black Roman numerals, dark blue hands and bluestone decorated winding stem. *Working order not known, needs battery, good very fine.*

\$500



455*

Longines ladies wristwatch, La Grand Classique de Longines model L4 209 2, gold plated quartz type, white dial with Roman numerals, matching gold plated and stainless steel bracelet. *In working order, extremely fine.*

\$300



457*

Baume & Mercier ladies wristwatch, Swiss quartz Catwalk in stainless steel with black dial, model MV045219, square case with fitted and matching stainless steel bracelet, Roman numerals at quarters. *In working order, extremely fine.*

\$150



456*

Tag Heuer ladies wristwatch, Professional 200m Model WL1314-0, quartz movement, with silver dial, Arabic numerals at the quarters and other indicators at 5 minute intervals are luminous, seconds hand and day window, stainless steel bracelet. *Working order unknown, needs battery, very fine.*

\$200

458

Ladies wristwatches, both quartz movement, Raymond Weil model 1601, oval gold plated case with black dial and small diamond at 12 o'clock, gold hands, Hirsch crockolook band; ESQ model E5383, stainless steel case and matching stainless steel and gold plated bracelet, white dial with Roman numerals, seconds hand and day window. *Working order unknown, both need battery, very fine - good very fine. (2)*

\$100



459*

Vintage ladies Rolex wristwatch, c1915, in 9ct rose gold (tot wt 14.2g), Rolex signed hinged case by W&D (Wilsdorf & Davies), movement also signed Rolex, white dial, black Roman numerals with red XII, manual wind, no bracelet/strap. *Glass missing, several dents on back cover, not in working order, otherwise fine.*

\$100

460

Ladies and gent's Tissot wristwatches, quartz movement, the ladies with gold plated and stainless steel case and matching bracelet, white dial with Roman numerals, seconds hand and day window, the gent's with stainless steel case and cream dial with indicator bars, seconds hand and day window, leather band, reverse of case has clear window to view workings. *Working condition of first not known, needs battery, the second appears to be working, very fine.* (2)

\$100



461*

DKNY ladies wristwatch, model NY-8485, quartz movement, mother of pearl dial with bar indicators, diamond-like decorative surround to dial, stainless steel case and matching bracelet. *Working order unknown, needs battery, otherwise extremely fine.*

\$80



462*

Raymond Weil ladies wristwatch, Amadeus 200 model 9202, quartz movement, case in stainless steel and gold plate with matching bracelet, white dial with gold bar indicators, second hand and day window. *Working order unknown, needs battery, very fine.*

\$80

463

Ladies vintage wristwatches, includes marcasite decorated case and bracelet and with hinged lid top with polished oval black stone set into lid, bracelet marked 'Kesten Made 1/20 10K GF. USA'; Tissot model with expanding band in stainless steel; another with marcasite decorated case, unnamed, and bracelet marked 'Montal Stainless Steel'; another sapphire decorated case and bracelet, the watch marked 'Mulco', the bracelet in sterling silver; Enicar watch and bracelet in rolled gold; Movado watch with bracelet in stainless steel, back inscribed, 'Diana 4-9-43'; also a gent's wristwatch, unmarked, no band, appears to be silver, back inscribed, 'Presented to/Mr J.R.Greener/By/St Paul's Congl Church Choir/& friends/18th Dec. 1923'. *Working order unknown, poor - very fine.* (7)

\$100

464

Tour a Pivoter, brass watch maker's lathe, in red case with 'Tour a Pivoter/1re Qualite' in blocked letters on lid. *Case with wear, average condition, sold untested, very fine.*

\$120



465*

Greece, bronze head of Alexander the Great, made in Hellenistic period, 2nd Century BC, flowing hair with anastole, back of head with flat surface, broken off at neck (45x35mm). *Fine dark brown patina, of fine style, very fine and rare.*

\$5,000

Ex Giessener Munzhandlung Dieter Gorny auction 93, Munich November 20, 1998 (lot 3106) and David G.L.Worland Collection.

466

Roman, iron horse spur of 3rd-4th century A.D., crude, but intact survivor in the metal iron, rare. *Fine.*

\$80

Ex H.D.Rauch Antiquities Auction c2007.

467

Roman, glass bottle 66mm high, 50mm wide. *Fine.*

\$80



468*

China, Han Dynasty, (226 BC-220 AD), bronze hand mirror, 172mm, (730g), round shape, decorated with circles, centre piece a Chinese lion head, also with extensive decoration arranged in a circular fashion. *A well preserved, dark brown/black patination, extremely fine example and very rare.*

\$1,500



469*

China, Ming Dynasty, Chinese Swatow blue and white klapmuts bowl from the Ming Dynasty (1368-1644) decorated with floral motifs as a plant and ornamental design, height 72mm, diameter 220mm, this piece made late Ming Dynasty, in China, c1610. *Minor crackling, and a small chip in base of bowl, otherwise fine.*

\$650

Please note: No mail out for this lot, collection only from the Sydney Office.

470

China, Ming Dynasty, small Chinese Swatow blue and white jars (3) from the Ming Dynasty (1368-1644) decorated with floral motif, height 45-49mm, diameter 54mm, these pieces made in the late Ming Dynasty, in China, c1600. *Minor chipping, otherwise fine.* (3)

\$280

Please note: No mail out for this lot, collection only from the Sydney Office.

471

China, Q'ing period (1644-1911), porcelain bowl and tea bowl, blue and white, both c1800, height 60mm, diameter 124mm; other height 31mm, diameter 113mm. *Large bowl with major repair; otherwise fine.* (2)

\$80

Please note: No mail out for this lot, collection only from the Sydney Office.

472

Indonesia, Srivijaya, silver ring 600-1200 AD, (12.76g) fitted with a fish design as its main device. *Very fine, rare.*

\$60

473

Netherlands East Indies, tin musket balls as cast into moulds, circa 18th century. *Very fine.* (12)

\$40

474

Tibet, necklace of red coral beads, overall length 65cm. *Very fine.*

\$70



475*

Africa, Mali, a twentieth century Dogon cast bronze statue of a male figure wearing a carry bag at side and holding a resting spear in right hand (35cm high), with support stand. *Extremely fine.*

\$300

Please note: No mail out for this lot, collection only from the Sydney Office.

476

Primitive money, Africa, Zaire or Congo, anchor or lance money, in copper, attributed to Bangala (Opitz p.102, Althoff p.30) and Lobala and Banja groups of the Ngbaka people (Ballarini B5.145, Westerdijk, 1984, #123), length 17 cm, width 10cm, with double row stippled decoration around the edge of the lance; (Ballarini B5.145, Westerdijk, 1984, #123), length 19cm, width 15cm, with single row of stippled decoration around the edge and a similar double band across the lance; (Ballarini B5.145, Westerdijk, 1984, #123), length 23cm, width 15.5cm, with single row of stippled decoration around the edge; uncertain, Africa or Primitive area tribal region, modern copies of a decorated cannibal fork of length 22cm, these were used by tribal chiefs to devour the bodies of their enemies; together with a decorated ceremonial club 30cm long, both with black and white flax handles; Africa, Nigeria?, uncertain area currency, bell money as a cast iron bell with handle shaped like a boat with two balls as ringers, length 12cms, external width 6cm, overall height 6.5cm, weight 340g; (Opitz -); Africa, Nigeria?, uncertain area currency, bell money as a cast iron bell with handle shaped like a boat with two balls as ringers, length 12cms, external width 6cm, overall height 6.5cm, weight 340g; (Opitz -); Africa, Zaire or Congo?, spear point decorated with wrap-around binding thin metal strip holding and allowing attachment of two pieces of iron of a large semi-circular shape, in iron, (Opitz -), length 36cm, width on circular arms 25cm; Africa, Nigeria?, uncertain area currency, large iron earrings with circle end for attachment to ear with flat kidney shaped ending, length 10.5cm, external width 6.5cm, weight 45g and 51g; (Opitz-); Africa, Nigeria?, uncertain area currency, bell money as a cast iron bell with handle shaped like a boat with three balls as ringers, length 17cm, external width 9cm, overall height 9.5cm, weight 760g; (Opitz -). *Generally very fine.* (10)

\$500

Please note: No mail out for this lot, collection only from the Sydney Office.

477

Borneo, (Malaysia, Brunei), brass cannon money, 130mm, (135 g), late 19th century early 20th century, with fish handles on top, broken piece out of side, used for trading purposes, barter of goods, payment of fines and in engagement and wedding ceremonies (Opitz [2000 edn.] p.100 as illustrated); together with tin imitations of Mexico, Charles IV, silver 8 reales, 1793FM, (KM.109); Netherland East Indies, 18th century rupees native type with hoard patination as imitations of Java rupees (light weight); a tin soldier and a jeton. *Mostly recovered from finds all with patination very good - very fine.* (6)

\$150



478*

Necklace, probably of ancient Indian style of manufacture, made in silver with an assortment of attachments around a central shield design with spiral pattern, additional attachments include sharp needles, bell shape with assorted extra charms also attached, tweezer and others, total weight (220g). *Fine.*

\$100



479*

Thailand, pointed ends silvered bracelet with six facet body with moderate enlarged pointed ends 65mm diameter, (87.72g), has chased design on both sides up to halfway along stem of bracelet, (Opitz p282, p283 illustration). *Very fine.*

\$100

480

Silver tray, with scalloped edges, 800 standard (tot wt 1.9kg), Continental, maker HA. *Fine.*

\$1,000

481

Silver tea and coffee set, 800 standard, Continental, teapot, coffee pot, sugar bowl, milk jug, all baluster shape and with filigree pattern (tot wt 2.5kg), maker indistinct (W?£). *Loose handle on teapot, otherwise very good.* (4 pieces)

\$1,000

Please note: No mail out for this lot, collection only from the Sydney Office.



482*

English Teapot, on spirit stand in sterling silver (tot wt 1.3kg) with fuel burner by maker GH (Harrison Brothers and Howson), 1911, burner unmarked. *Very fine.*

\$650

Please note: No mail out for this lot, collection only from the Sydney Office.

483

Collection of antique and other silver tongs and spoons, includes various tongs, George III, 1804 London by Stephen Adam I (142mm); 1892 London by Francis Higgins (102mm); 1905 London by James Wakely & Frank Clarke Wheeler (88mm); 1934 Sheffield by M&W (82mm); 1915 London by RB (80mm); 1926 London by JD&S (110mm); fork tongs, 1914 London by E.Viners (80mm); teaspoons, 1915 London by D&S (95mm); 1893 London by PP Ltd (Payton Pepper & Sons Ltd?) (110mm) with voided initials HGC around cross golf clubs at end; 1914 Birmingham by A.J.B. (100mm); fork, no hallmark and maker's mark unclear. *Mostly fine - very fine.* (11)

\$500



484*

George III pair of casters, in sterling silver (tot wt 156.1g; approx 12.5cm high), pierced pattern removable tops and plain classic style body, hallmarked for London 1787 with maker's mark, 'S.W' (Samuel Wood). *Very fine.* (2)

\$500

485

Silver trinket box, ornate engraved silver box 83x57x24mm to hold jewellery, engraved to a Mr Alexander Weir Kilmarnock as a presentation, hallmarked and dated 30th July 1861. *Very fine.*

\$300

486

Sterling silver spurs, complete with chains for attachment to boots, stamped by the Bendigo Colonial jeweller F.Napoli Prescott, engraved to Billy Edwick, first Prize Yearling Colt, Aug 12th 1911, heel band is 70mm wide, the shank is adorned by a small silver rotating rowel. *Fine - very fine.*

\$200

487

Silver card case, ornate Crisford & Noriss case 103x70x10mm, Birmingham, c1900 (67.3g); together with an Art Deco silver powder compact with original mirror, engraved as a keepsake 27.11.1939, with US raised on other lid. *Fine - very fine.* (2)

\$120

488

Sheffield silver plate items, includes large meat cover dome with plain oval body (approx 30.5x39cm), maker's mark, 'JB&S' (James Ballantyne & Son), engraved on side, 'EMB (monogram)/15.Oct 1919.'; large circular tray (approx 42cm) with handles, decorative edge, marked as 'Herworth Reproduction Sheffield'; silver plate dish bowl (29x21cm) with cover; other small salvers (17cm), (25cm) and (16cm), the last with three short legs. *Fine - very fine.* (6)

\$100

Please note: No mail out for this lot, collection only from the Sydney Office.

489

Antique silver box, oval (50x37x27mm), hinged lid with ornate decoration on top and around side, hallmarked for Birmingham 1897 by maker, 'Cornelius Saunders & Francis Shepherd'; ladies compact in silver decorated with enamel, round (57mm) with hinged lid, hallmarked for Birmingham 1930, maker 'T&S'; sterling silver matchbox holder, hammered surface pattern and bamboo design on one side, initials 'HMH' in one corner; antique carnelian handled button hook. *The second item with some enamel loss, otherwise fine - very fine.* (4)

\$100

490

Cutlery set, boxed set of 44 pieces of EPNS, a setting for 6 people complete, knives by C.Dixon & Co, Sheffield, other cutlery by Cavalier, these with ornate decorated handles. *Fine - very fine.* (lot)

\$100

Please note: No mail out for this lot, collection only from the Sydney Office.

491

Silver plate serving tray and plates, features oval (37x32cm) serving tray by WA of Sheffield, with a reticulated gallery raised edge with oval cut-outs at each end for carrying, patterned surface and four short legs; serving plate salver, circular (31cm) with decorative edge, floral pattern surface and three legs; another serving plate, circular (28.5cm) without legs, decorative edge and plain surface, marked on reverse 'Rodd-Herworth'; serving dish, rectangular (32.5x24cm), plain surface with decorative and shaped edge; two small circular plates (18.5 and 12.5cm), both plain surface but with decorative scalloped edge. *The salver with copper bleed through the surface on the patterned area, otherwise very fine.* (6)

\$70

Please note: No mail out for this lot, collection only from the Sydney Office.

492

Antique silver jar, (approx 13cm high), hallmarked for London 1896; also silver plate items including small patterned oval bowl; pepper mill grinder made in Italy; small sweets dish; milk jug; small bowl inscribed on side, 'Runner-Up Services Day/1996'; a pair of small condiment trays with legs; beer tankard with attached 'OGC' logo on side and inscribed below, 'Oatlands Golf Club/Visitor's Day/12.5.51'; ice bucket with tongs; sugar bowl with handle; serviette rings (2, not matching); water jug; warming dish with lid. *Most need cleaning, very good - very fine.* (16)

\$70

Please note: No mail out for this lot, collection only from the Sydney Office.

493

Vintage cake server, and large two prong pickle fork with push down release mechanism, both in silver plate and both inscribed, "M.V. Merkur". *Very fine.* (2)

\$50

MV Merkur was a 5,952 tons passenger cargo vessel built by Frederick Krupp AG, Kiel in 1924. After service with various shipping companies she was bought by Burns Philp & Company in 1935. She was requisitioned into the Royal Australian Navy on 12 December 1942 for service during the Second World War as a victualling stores and supply vessel. She operated in North Queensland and New Guinea waters with her civilian crew. The 'Merkur' was returned to her owners in 1949 and later broken up at Osaka, Japan in January 1954.

494

Large teapot and coffee pot set, both with plain surface and scalloped edge around the top and four legs, marked, 'EPNS/Rundle/Angus & Coote'. *Very fine.* (2)

\$50

495

Vintage tableware, mostly silver plate, includes filigree sugar tongs, other silver sugar tongs, various patterned set of desert spoons, teaspoons and fruit forks, in sets of five, six (3 sets) and twelve, also metal bottle sealer with pouring spout; vintage set of six dinner knives and forks, in EPNS with bone (ivory?) handles, in original case; also eleven large dinner knives in Sheffield stainless steel by Bessell, with cream handles. *Good - very fine.* (61)

\$50

Please note: No mail out for this lot, collection only from the Sydney Office.

496

Four champagne glasses, etched with depictions of birds signed by Tony Oliver, bowl stems and gilt rims. *Extremely fine.* (4)

\$50

With research, Tony Oliver, 1940-2005, children's book illustrator, etc, winner of awards by the Royal Zoological Society and Australia Geographic Society.

Please note: No mail out for this lot, collection only from the Sydney Office.



497*

Antique Mother of Pearl trinket box, 19th century, clam shaped and centre opening box (approx 7x4.5cm). *In blue storage box, very fine and unusual.*

\$100

498

Antique opera glasses, in brass with body decorated with abalone shell, across the main bridge is inscribed, 'A.L.Dixon/Febr 17th 1902', missing one large and one small piece of glass; also crocodile skin-like belt pouch (9x11cm). *Fine - very fine.* (2)

\$100

499

Brass vase, large art nouveau period brass vase 11.75 inches high, 6.5 inches diameter, with decorative torches on stem. *Very fine.*

\$80



500*

China, a lavender-blue 'Jun' bowl, Song (Sung) dynasty with the outside with a matte glaze of reddish purple decoration, this bowl is an outstanding example of a very rare Imperial numbered 'Jun' - with 3 marked into the base, a piebald Bowl of the Classical ceramic home decoration vintage, (168mm diameter, height 53mm). *Very fine and rare.*

\$2,000

From the Yuxian (Henan) area of China obtained in London.

Jun ware is a type of Chinese celadon. The use of straw ash in the glaze bestows its unique blue glaze suffused with white. The ware was created near Linru County in the province of Henan at the Jun kilns of Yuzhou City during the Northern Song dynasty (960-1126).

Please note: No mail out for this lot, collection only from the Sydney Office.

501

Franz Porcelain Collection of Tureen & Ladle, 'Bliss and Tranquility', sculptured by Li Lin, boxed, porcelain made in a swan design as part of tureen, made 2007, 10.5 inches high, laddle 10 inches long. *As new.*

\$1,000

Please note: No mail out for this lot, collection only from the Sydney Office.

502

Franz Porcelain Collection of a swan design vase, 'The Southern Splendor', boxed, porcelain made in a swan design as part of the vase, 16 inches high, 14 inches long and 12.5 inches wide. *As new.*

\$1,000

Please note: No mail out for this lot, collection only from the Sydney Office.

503

Nao Porcelain dancer, dancer with veil flowing over her head, height 32cm, width 26cm, hand made porcelain, from Valencia, Spain. *As new.*

\$200

Please note: No mail out for this lot, collection only from the Sydney Office.

504

Lladro porcelain dancer, 'The dancer', the dancer with both hands holding skirt, height 30cm, width 17cm, hand made porcelain, from Spain. *As new.*

\$100

Please note: No mail out for this lot, collection only from the Sydney Office.

505

Carlisle ware, boxed 'Iris' vase 22cm high, hand painted but features Carlisle Collection on base. *As new.*

\$100

Please note: No mail out for this lot, collection only from the Sydney Office.

506

Coffee pot, porcelain Royal Albert 'Jubilee Rose' style with lid, with markings and name on base, height 25cm, width 23cm, with gilded edges. *As new.*

\$100

Please note: No mail out for this lot, collection only from the Sydney Office.

507

Old Upton ware, boxed 'Summer Bouquet' flowers on a ginger vase with lid, 16cm high, wide 12.5cm, hand painted but features crown in base and made in China. *As new.*

\$90

Please note: No mail out for this lot, collection only from the Sydney Office.

508

Wade partridge in a pear tree bowl, (approx 10cm diameter), by Royal Victoria Pottery; Kosta Boda round bowl (12cm) with leaf design; silver plated champagne cup (chalice-like); silver-plated, short candlestick holders (2); silver-plated candle snuffer with 30cm handle; miniature tea cup saucer and plate set, made in Japan, decorated with 18th century young man and lady design, with tiered, wooden display stand. *Crack in one of the miniature plates, otherwise very fine - extremely fine.* (6+set)

\$50

Please note: No mail out for this lot, collection only from the Sydney Office.

509

Figurines, porcelain 18th English style figurines as a pair in a box, featuring a gentleman with a mandolin and a lady with a harp, made in Taiwan. *Very fine.* (2)

\$50

Please note: No mail out for this lot, collection only from the Sydney Office.

510

Old Upton ware, boxed 'Summer Bouquet Girl', 30cm high, hand painted but features crown in base. *As new.*

\$140

Please note: No mail out for this lot, collection only from the Sydney Office.

511

Old Upton ware, boxed 'Summer Bouquet' flowers on vase, 20cm high, wide 12.5cm, hand painted but features crown in base. *As new.*

\$90

Please note: No mail out for this lot, collection only from the Sydney Office.

512

Old Upton ware, boxed 'Hibiscus Vase' 22cm high, hand painted but features crown in base. *As new.*

\$80

Please note: No mail out for this lot, collection only from the Sydney Office.

513

Old Upton ware, boxed 'Summer Bouquet Girl' 34cm high, hand painted but made in China. *As new.*

\$80

Please note: No mail out for this lot, collection only from the Sydney Office.

514
Old Upton ware, boxed 'Iris' jug, 25cm high, hand painted but features crown in base. *As new.*

\$70

No mail out for this lot, collection only from the Sydney Office.

515
Old Upton ware, boxed 'Hibiscus' vase, 20cm high, hand painted but features crown in base. *As new.*

\$60

No mail out for this lot, collection only from the Sydney Office.

516
Urn, large octagonal shaped decorative urn with lid by Copeland as Spode of Gloucester in fine stone 12 inches high, 6 inches wide, with decorative flowers on each face, animal placed on top of lid. *Very fine.*

No mail out for this lot, collection only from the Sydney Office.

517
Crystal, Swarovski crystal made in the form of a seated puma. *As new.*

\$180

518
Crystal, Swarovski crystal made in the form of a lion cub. *As new.*

\$150

519
Various items, a Marigold carnival glass bowl with peacock and grapes alternating around the bowl, diameter 23cm, height 6cm; glass whiskey decanter by I.W.Harper height 26cm; blue hand painted pottery, two handled vase decorated with flowers height 22cm, diameter 15cm. *Fine about as new.* (3)

\$100

No mail out for this lot, collection only from the Sydney Office.

520
Glass serving platters; an assortment of four with various designs, one with clear glass floral design, another with embossed stippled glass with a lobster design; another as a textured serving platter and another as a glass cheese platter with handle; a large pottery platter with a European coach house scene created in three dimensions. *All nearly as new.* (5)

\$100

No mail out for this lot, collection only from the Sydney Office.

521
Bottles of red wine, a group of four from Penfolds 'Grange Hermitage Bin 95', 1984 and 1988; 'Old Vine Barossa Valley Grenache-Mourvedre Shiraz' 1996 and 'Magill Estate Shiraz', 2001. *Unopened.* (4)

\$400

No mail out for this lot, collection only from the Sydney Office.

522
Whiskey jugs in a large box, an assortment of three porcelain jugs, Wade Regicor Ballantines Scotch whiskey jug; Carlton Ware vintage Scotch whiskey jug; Wade Grant's Scotch whiskey jug; and a Mercedes porcelain mantle clock. *As new.* (4)

\$100

No mail out for this lot, collection only from the Sydney Office.

523
Wooden figures, three are probably of South East Asia (one from New Zealand), in wood a fisherman height 35cm; a half bust of a native woman height 31cm; another taller woman height 60cm; and a native islander in grass skirt made out of plaster 'Pania of the Reef', height 30cm. *All very fine.* (4)

\$100

No mail out for this lot, collection only from the Sydney Office.

524
Porcelain doll, 'Doll with Hat' c1950s with blue dress and attached bow, height 35cm, hand made porcelain. *As new and rare.*

\$200

No mail out for this lot, collection only from the Sydney Office.

525
Porcelain doll, 'Doll in Baby Nappy and Top' c1950s, height 30cm, hand made porcelain. *As new and rare.*

\$120

No mail out for this lot, collection only from the Sydney Office.

526
Porcelain doll, 'My name is Sally' limited numbered edition No.286/2500, doll in white clothes made c1950s, height 50cm, hand made porcelain. *As new.*

\$80

No mail out for this lot, collection only from the Sydney Office.



part

527*
Beatles memorabilia, includes LP vinyl record in album cover for Sgt Peppers Lonely Hearts Club Band, 1967; The Beatles A TV Week Special, printed and published in Australia; Supplements to Australian Women's Weekly, Teenagers' Weekly Beatles Special March 18, 1964; another for Beatles Visit, June 17, 1964; another for Beatles Souvenir, July 15, 1964; Fabulous magazine with large colour photo of

Beatles, 11 April, 1964, printed in England for distribution in Australia and other Commonwealth countries, also includes cardboard cut-out; 2HD Swingers Monthly, Beatles!, February 1964, a Newcastle, NSW radio club publication; Meet The Beatles, Star Special Number twelve, 1963, printed in England; Beatlemania, 1963, published in Australia; The Beatles Picture Book, 1963, published in Australia; The Beatle Album, 1963, published in Australia; The Beatles at Carnegie Hall, 1964, published in England, also Beatles postcards (4). *The first publication with tear at bottom edge of cover page, the Supplements with edge tears and creases at opening edges, a few items with light foxing, otherwise very fine.* (17)

\$200

528

Traditional Chinese jacket, in silk with gold embroidery, silver or pewter buttons, probably c1970s; Peking Opera painted faces, in porcelain (58x53mm), promotional gifts from Kempinski Hotel, Beijing (c1990s) (12), together with books (2) 'Peking Opera Painted Faces' and 'Facial Makeup in Beijing Opera of China'; also, crystal animal miniatures (approx 70x60mm), still in original wrapping (approx 12). *Extremely fine or better.* (27)

\$100

529

Telephone, early wall mounted Post Master General model, complete with mouthpiece. *Fine.*

\$100

Please note: No mail out for this lot, collection only from the Sydney Office.

530

Matchbox cars, Models of Yesteryear, Ronald McDonald House Camp Quality 1996 set, 1926 Ford model TT van, 1930 Ford model A van, in box of issue; Top Gear 1995 set of five FJ Holden miniature vans in box of issue; Sterling silver stamp replicas, gold plated, six types including 1d Victoria, 2 shillings South Australia, 10 shillings Flinders; cased set of brass scales with five weights from 1g to 10g. *Extremely fine.* (4)

\$100

531

Tasco pocket 30 power telescope, with stand No 2TE Comet, with leather case and in original box; binoculars, black with mauve trim, in case for wearing on belt; another pair of binoculars, black and silver, in case for wearing on belt, unused; Polaroid Joycam camera; Kodak S Series camera with case. *Very fine - uncirculated.* (5)

\$50

532

Asahi Pentax MEF camera, black 35mm with leather carry case and neck strap, and with instruction book; also 'SMC-A' long distance lens, with leather carry case and neck strap, and with Lenses and Accessories instruction book. *Good very fine.* (2)

\$150

533

Asahi Pentax Super A camera, black 35mm with solid neck carry strap, with instruction book; also Pentax micro lens; Sigma long distance lens, with instruction book. *The last two with leather carry case, very fine.* (3)

\$100

534

Australia Telecom phonecard packs, includes Xmas 1992, Australia Day 1993, Summertime II, Stamp Classics No 1 (2), State series for Northern Territory, Western Australia and Tasmania, Cardex 94 Amsterdam (2), Commonwealth Games 1994, Australian Life Saving, Xmas 1995, Homecoming 50th, Red Cross. *All in folders of issue, some scarce, uncirculated.* (15)

\$100

535

Australian casino souvenir decks of playing cards, Casino Canberra, c1995, in special souvenir packet with drilled centre hole for security reasons and sealed with sticker, 'This packet of playing cards has been used in table play at casino Canberra Australia'; Conrad Jupiters, Gold Coast Qld, Australia, red dotted packet with Quality Check for Station No 1, 1994 April - June, Operator 0308, security hole drilled through centre; another but blue dotted packet with Quality Check for Station No 1, 1994 April - June, Operator 0043, security hole drilled through centre, both previous decks with S1 in red print on Jokers and S.I. security seal on packets; Wrest Point Hotel Casino, 1992 (2 decks in souvenir packets), one blue packet and one red packet, both with security seals and security hole drilled through centre, both with penned writing on packets as entered by casino staff when cards put into use and withdrawn. *Extremely fine.* (5 decks)

\$50

536

Australia, foldouts (pictorial colour view folders), mostly from Queensland, NSW, Victoria and South Australia (73); also USA (12). *A wide selection, mostly fine - extremely fine.* (85)

\$50

537

Views of Ireland, 19th century engravings (approx 12x18cm plus border with title below), all by W.H. Bartlett, includes Youghall Abbey (The Residence of Sir Walter Raleigh); Interior of Cashell Abbey; Interior of Holy-Cross Abbey; Augustinian Abbey, Adare (with the Castle of the Fitzgeralds and the Franciscan Abbey); Glenariff; Clifden Castle (Connemara); Phoul A Phuca; The Giants Causeway (from above); The Industrious 'Prentice Favourite, and Entrusted by his Master from the book Industry and Idleness; Ancient Crofs, Clonmacnoise; Dephi Lodge (Connemara); Taking a Stag, near Derrycunihy Cascade, Killarney; The Giants Causeway (from above); Gougaua Barra; Castle Howard Vale of Ovoca, all printed by Geo. Virtue of 26 Ivy Lane, London, all printed by Geo. Virtue of 26 Ivy Lane, London; also Germany, set of three collectables by Gode, includes amethyst, oval in shape, miniature Blucher Star replica, and Elisabeth of Austria medal, undated, in individual packets with certificates and in set folder; Olympics folder with stamp set of four, CTO at Bonn 1, 1992, commemorating first time in 28 years for a common German Olympic team. *The prints with some foxing around borders, otherwise very fine, Gode folder with writing on front, otherwise uncirculated.* (16 + 1 set)

\$100

538

Antiquarian book, Sancti Francisci Xaverii Epistolarum libri quatuor, by the Authors Saint Francis Xavier and Orazio Torsellino, Publisher Apud Ioannem Caelier in East Asia, 1668, 258 pages, in calf. *Binding in poor condition, early pages water damaged, fair and rare.*

\$80