

MISCELLANEOUS

1377

**Australia**, Edward VII, sovereign, 1909 Sydney, with gold scroll suspension. *Very fine*.

\$350

Ex John Houstone Collection.

1378

**Australia**, coin jewellery, silver one ounce one dollar kangaroo, 1993 in silver clip-in pendant frame; Belize, ten dollars, 1975 in silver clip-in pendant frame; USA, Mercury dime, 1942 in clip-in pendant frame; Peace dollar, 1923 fitted into screw-in frame attached to silver money clip; American Eagle silver one ounce dollar, 1991 in clip-in silver pendant frame. *Fine - extremely fine*. (5)

\$100



1379\*

**Austria**, Franz Joseph, ducat, 1915 restrike (KM.2267), in decorative 14ct gold frame with suspension ring for wear as pendant and also brooch pin fitting. *Very fine*.

\$350

1380

**Austria**, Franz Joseph, gold four ducats, 1915 restrike, set in a rope pattern surround mount with suspension loop and link. *Good extremely fine*.

\$650



part

1381\*

**Egypt**, gold medal, Tutankhamun/Nefertiti (34mm) (25.24g); **France**, Napoleon III, gold ten francs, 1863, first in an 18ct surround mount with suspension loop and link, second in 30mm double ring mount. *Good very fine; good fine*. (2)

\$1,000



1382\*

**France**, Napoleon III, gold one hundred francs, 1858A, set in a 14ct surround mount with loop and link. *Good very fine*.

\$1,600

1383

**German New Guinea**, limited issue replica coins, silver five mark, gold ten and twenty mark, produced by the German Mint (MDM) with certificate for silver five mark. *Proofs, FDC*. (3)

\$150



1384\*

**Queen Victoria**, Jubilee head, half sovereign, 1887, a high quality jeweller's replica. *Unmarked uncirculated*.

\$180



1385\*

**Great Britain**, Queen Victoria, penny, 1884, reverse design voided and obverse shaved with brooch pin fitted and fancy border added to coin. *Very fine*.

\$50

1386

**Great Britain**, Edward VII, gold two pounds, 1902, with ornate scroll loop mount at top. *Good very fine*.

\$800

1387

**India**, George V, sovereign 1918I, jeweller's copy. *Uncirculated*.

\$350



1388\*

**Panama**, decorative coin fob, includes five silver coins of 1904, 2-1/2, 5, 10, 25 and 50 centesimos joined by chain link, graduated with smallest at the top (KM.1-5). *Toned, good very fine.*

\$150

1389

**Coin pendant frame**, in 18ct gold (4.93g), 4-clasp type suitable for a sovereign. *Extremely fine.*

\$180

Ex John Houstone Collection.

1390

**Guinea and half guinea balance scale**, c1850, in timber case (135mmL x 23mmW x 14mmD), scales rise up when case is opened, by A.Wilkinson, Ormskirk (late of Kirkby) near Liverpool, with fitted paper instructions on bottom of case. *Good very fine.*

\$100

1391

**Sovereign and half sovereign balance scale**, c1850, in timber case (135mmL x 38mmW x 18mmD), scales rise up when case is opened, by Stephen Houghton & Son, Ormskirk, successors to A.Wilkinson, with fitted paper instructions intact. *Lengthways split (45mm) in timber lid, 10x2mm piece missing from paper on right side instructions, otherwise good very fine.*

\$100

1392

**Sovereign and half sovereign rocker balance scales**, beam with cut away coin pans and counterweight stamped crown, base stamped 'Sovereign/warranted' (95mmL x 20mmW x 15mmD) in red cardboard case. *Label on top of case worn away, wear and damage to case, fine.*

\$100

1393

**Apothecarie weights and standard weights**, an assortment including square 1/2 scruple (2), 1 scruple, 2 scruples (3); 1/2 drachm (2), 1 drachm (3), 2 drachms (3), 4 drachms, 120 grs, some with counterstamps; rectangular with cut corners, 6 DWTS, 5 DWTS, 4 WDTS, 3 DWTS, 1 DWTS, 1 DWTS, 1/2 DWT; Standard W.& T.A., two penny weight, four penny, five penny, six penny, two scruples, one dram; W & T.Avery/Limited/Birmingham, 1 1/2 scruples, one scruple; W & T Avery, 1/2 scruple/10 grains; round, Avery troy, .04 oz, 1 oz, 2oz, 3 oz, 4 oz, 5 oz; W.& T.A. Apoth. weights/registered/March 16/1847, two scruples, half dram, one dram, two drams; W.& T.A. two drachms; J.L.B., two scruples; half dram, no maker, crown in centre on one side; Royal Mint 1843, half sovereign weight; George II, 2 guinea W; dishd weights for 4 dr, 4 drams (2), 8 drams (3); 1/4 oz, 1/2 oz (3), 1 oz (2); 1/4 oz and 1/2 oz Avery all bar one with counterstamps; 1/2 oz and 1 oz troy; a set of 6 square apothecarie weights in round cardboard box, 1/2 scruple to 2 drachms; weights for 3 (4), 4 (5), 5 (2), 6 (3) and 12 grains, plus a set 1, 2, 3, 4, 5 and 6 grains; weight for Portuguese Moidore, S 27 / 6.22, 9.4g, 22mm. *Good - very fine.* (94)

\$120

1394

**Coin presentation cases**, Lighthouse, three trays in each, hinged lid design in mahogany finish, each case holds 90 coins. *As new in original boxes.* (3)

\$150

Ex Terry Naughton Collection.

1395

**Coin cases**, by Abafil (2), with four trays each. *Very fine.* (2)

\$100

1396

**Credit Suisse**, 50g fine gold 999.9 ingot, No.010765. *Extremely fine.*

\$2,000

1397

**Natural gold nugget**, (1.77g). *Fine.*

\$100

1398

**Diamond ring**, (approx 25pt), in 18ct gold (tot wt 1.45g); pearl necklace (80mm) uniform size with silver clasp; another pearl necklace (35mm), uniform size beige in colour; pearl earrings with diamond-like features (costume jewellery); greenstone costume jewellery necklace (42mm). *The ring band broken, otherwise very fine - nearly uncirculated.* (5)

\$150

1399

**Gent's onyx ring**, in 9ct gold (tot wt 6.3g); silver filigree style bracelet with panels featuring ancient Egyptian figures; silver filigree bracelet with centrepiece featuring butterfly design; silver pendant with Aztec mayan sundial on one side and an eagle warrior's head on the other side; various other bits and pieces including a variety of shirt studs, single cufflinks, broken necklace, carved stone centrepieces for rings, brass ring with large letter A, broken bracelet with heart clasp, pearl tie pin, other items. *Poor - very fine.* (lot)

\$150

1400

**Mixed gold jewellery**, includes a few dress rings, some wedding bands, an heart pendant and other items, mostly worn or damaged (18ct, 14.25g; 15ct, 8.78g; 12ct, 0.92g; 9ct, 23.88g). *Poor - fine*. (47.83g)

\$1,350

1401

**Ladies drop earrings**, in gold with small diamond decorated suspension with pearl at end in a plastic hoop, for pierced ears, one missing the push-on securing catch (tot wt 4.15g); 14ct gold pearl and diamond stick pin (tot wt excluding securing fitting 1.66g); 14ct gold photo pendant, features a double coiled rope surround and a clear disc centre on both sides for inserting a photo (tot wt 8.75g); wedding ring in 14ct gold (1.6g), inside engraved, '16 April 1866'. *The photo in the locket faded, otherwise fine - very fine*. (3 + pair)

\$200



1402\*

**Ladies earrings**, in 14ct gold with a pearl and above a small 10pt diamond (tot wt 2.88g), clip-on style. *Good very fine*.

\$100

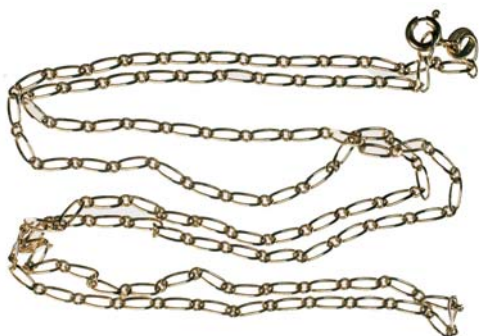


part

1403\*

**Pearl earrings**, in 14ct gold (tot wt 6.93g), drop style each featuring five small pearls in a flower setting with a central blue sapphire and at the top another pearl, cased; also a Mikimoto pearl ring, with trademark, in silver and in Mikimoto case. *Extremely fine*. (1 + pair)

\$100



1404\*

**Gold necklace**, with figaro style links in 18ct gold (4.77g; 55cm). *As new*.

\$150

1405

**Australia, 2000 Olympics gold \$100 'The Journey begins'**, mounted on hallmarked chain and ring support, as officially released, limited series No.105/350 in case as issued. *Uncirculated*.

\$400

1406

**Gold jewellery**, belcher link bracelet in 9ct (4.4g; 19cm); another but anchor links and with safety chain in 9ct (3.77g; 17cm); thin neck chain in 9ct (2.67g; 46cm); wrist chain with heart clasp in 9ct (3.15g; 24cm). *The second with a broken link, otherwise very fine*. (4)

\$300



1407\*

**Vintage brooch bar**, in 15ct gold (5.21g), double stylised bars with central panel with ruby and four seed pearls around and small side stars each with a seed pearl, with safety chain, hallmarked, 'W15D' (vendor advises by Wendt of Adelaide and D indicates 1926). *In case, very fine*.

\$200



1408\*

**Fashionable brooch**, in 18ct gold with large central citrine (approx 15x18mm), above two small diamonds and thin, wispy sprays around (tot wt 12.02g). *Extremely fine*.

\$180



1409\*

**Vintage brooch**, in 9ct gold with central topaz (approx 4x5mm) in the centre of a brooch bar with floral decoration each side (tot wt 2.52g); also locket (16x20mm), in 9ct gold (1.99g), with scroll decoration at left half on front. *Very fine; extremely fine*. (2)

\$100

1410

**Cat's Eye brooches**, two different sizes, each mounted on 9ct bar, one with safety chain; also Cat's Eye ring in 9ct gold. *Fine - very fine.* (3)

\$100

1411

**Vintage jewellery**, includes ribbon bow brooch in 9ct gold (3.87g), with hand engraved floral decoration, missing safety chain; another brooch bar in 9ct gold (1.94g), features two shaped bars with a decorative scroll across the centre, missing pin; pair of 9ct silver lined bangles (approx 58 & 46cm centre diameter); name bracelet in 9ct gold plated silver, decorative name plate inscribed, 'Sylvia'. *Fine - very fine.* (5)

\$100



1412\*

**Vintage ladies opal set brooch bar**, in 9ct gold (tot wt 5.33g), with safety chain. *Fine.*

\$80

Ex John Houstone Collection.



1413\*

**Lucky Chinese pendant**, in 22ct gold (2.45g), with 18ct gold twisted curb link necklace (2.64g; 50cm), features a roughly triangular shaped pendant with the Chinese character for Fu (Fortune or Good Luck). *Extremely fine.*

\$220



1414\*

**Pendants**, a leaf design featuring three opal triplets in 9ct gold setting (tot wt 1.32g); a cross in 9ct gold with a small diamond inset at the end of each arm (tot wt 0.87g); a naked man and a woman sitting back to back with arms around raised knees, in 9ct gold and featuring two small diamonds in silvered plaque below (tot wt 2.65g). *Extremely fine.* (3)

\$150

1415

**Vintage monogram initials pendant**, in 9ct gold (5.87g; 23mm), by A.L.B. (A.L.Brunckhom), with suspension ring, obverse, voided monogram initials, 'SAA', reverse, plain; another, in 9ct gold (1.35g; 23mm), by Willis & Co, with suspension ring, obverse, shield in centre of a band, the shield inscribed, 'ARG'. *The first very fine, the second with a few dents, otherwise fine.* (2)

\$150

Ex John Houstone Collection.



1416\*

**Vintage pendant**, in 9ct gold featuring a claw set oval pale green tourmaline (14x22mm), with spray of leaves at lower half (tot wt 5.96g). *Good very fine.*

\$80



1417\*

**Vintage pendant**, in 9ct gold featuring an oval black onyx set into a voided frame (approx 15x32mm) with leaf decorations around, with gold chain (42cm) (tot wt 5.65g). *Very fine.*

\$80

1418

**Vintage Australiana pendant**, in 9ct gold (1.25g; 25x25mm), by Willis & Co, features a boomerang in rose gold and suspended below in yellow gold is a map of Australia with the Australian coat-of-arms in centre. *Good fine.*

\$50

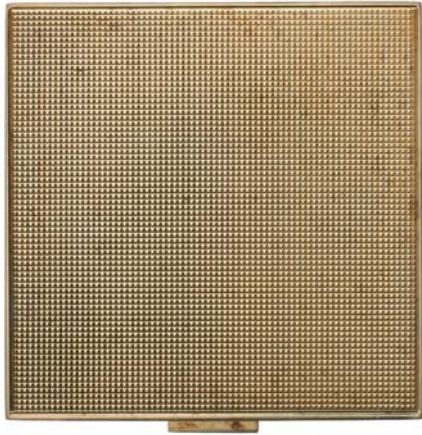
Ex John Houstone Collection.

1419

**Vintage locket**, in 9ct gold (4.02g), hexagonal with side hinge, central engraved area with scroll pattern surrounds, reverse plain; heavy silver, cast with holes at sides and with multiple upright prongs surrounding a central, oval boulder opal doublet; also Pope Paul VI Australia Visit, set of two, 1970, in silvered and bronze (48mm) (C.1970/56), another in silver (32mm), edge no.0166 (part of a gold and silver medal set with certificate) (C.1970/79). *The medals in cases of issue, uncirculated, the rest very good - fine.* (3 + set of 2)

\$140

Together with valuation certificate for gold locket.



1420\*  
**Ladies powder compact**, in 14ct gold, a square machine turned case (55mm; tot wt 59.95g), clip-lock, with mirror on inside of the hinge-lid, base with lining and lift-off puff. *In fitted leather box, very fine.*

\$1,400

1421  
**Religious items**, includes Holy Mary pendant in 18ct gold and silver (tot wt 2.49g); crucifix pendants in various sizes and materials (5); small white metal medal featuring Christ; small enamelled pendant featuring Mary and child; souvenir brooches for Holy Communion (2) and Confirmation (2, one missing brooch bar); small coloured photo of Christ in plastic frame (approx 5 cm square); other small coloured religious photos (17); rosary beads (2 sets, one with blue beads and the other white). *Mostly very good - very fine.* (32)

\$120

1422  
**Silver chain**, large link type (42cm long), with attached 18ct heart pendant, white gold one side and yellow gold on other (tot wt 32.71g); another large link type silver chain but shorter in length (30cm) (35.91g); also a silver filigree floral brooch/pendant (3.48g). *Very fine.* (3)

\$80

1423  
**Silver ladies bracelet**, voided floral design; sterling silver Siamese enamel decorated brooch, bracelet and earrings (3); silver-like floral basket pendant and necklace; another larger brooch pendant with enamelled centrepiece with image of scales of justice, with silver-like necklace; another with Mexican Aztec theme decorated with polished blue stones, with silver-like necklace; silver-like bracelet with links of shell decorated butterflies; silver brooch with large, round cut blue stone (approx 2cm); oval silver pendant with unusual blue pattern (jungle scene?), missing suspension loop; oval (30x41mm) polished agate decorated with silver pattern at one side and on a silver box chain. *Fine - extremely fine.* (17)

\$70



1424\*  
**Lucky Chinese necklace**, (approx 44cm), in silver with necklace made with alternating solid oval links and round links featuring a dragon's face, the pendant below has a jade disc in the centre of which is the Chinese character for Fu (Fortune or Good Luck) and below a voided display of traditional flora. *Very fine.*

\$80



1425\*  
**Pearl necklace**, two strand tapering champagne coloured pearls (36cm), with platinum closer decorated with small diamonds and blue sapphires. *Good very fine.*

\$100

1426  
**Pearl jewellery**, includes triple strand rice freshwater pearls necklace (41mm) with matching earrings set; pearl necklace (44cm) with large jewelled closer at approximately midpoint at each side, two strand small matching pearls at one side and tapered small to large pearls at other side, by opening both clasps then can wear either side as a bracelet, made in Germany; pearl necklace with matching sized cultured pearls (58cm) with flower shaped closer; Kitami matching sized pearl necklace (60cm) with matching bracelet, in original case (this damaged) with certificate; plain pearl earrings set; also Anne Klein box with certificate for one of the above. *Very fine - extremely fine.* (7)

\$100



part

1427\*

**Marcasite jewellery**, includes in silver, bracelet, necklace, earrings, floral spray brooches (2, different); also in silvered metal, earrings (2 pairs, different), small ribbon bow brooch (missing a few marcasites), heavy bracelet; also rings (7) one marcasite, one with green stone engraved with Aries (ram) symbol, others with polished stones and a signet ring, some in silver; loose various sized gemstones including opal, amethyst, topaz, garnet and rough, polished green stone; also various jewellery boxes, one in metal and timber lined with embossed open coach with two horses, driver, coachman and five lady passengers holding parasols (approx 12x8x4cm); small metal tin with hinged lid, decorated at sides and on the top inscribed, 'Useful/Things' (8.5x4.3x2cm); circular boxes in metal with lift off lids, in the lid centre is a seated Dachshund and inscribed above and below, 'Trusty/Friends', with belt decoration around side (6x20.5cm); small gilt hinged lid box with top decorated with small enamelled tiles, floral decorated sides (3.5x2.7x10.7cm); another small oval hinged lid box in gilt, plain sides and with polished stone top and with locking clasp (30.8x20.8x10.8cm). *Mostly fine - very fine.* (24 + 3 pairs)

\$150

1428

**Costume jewellery**, includes hand set filigree necklace (40cm) with matching earrings set, features magnificent blue stone set floral display, in box of issue; gold basket designed brooch featuring pearls and olivine (Hawaiian diamonds), by Patmounts of Hawaii, in half box with small leaflet; sweeping ribbon tie golden brooch decorated with emeralds, sapphires and diamonds, all artificial, in case; golden pendant with central pearl, decorated around and above with diamond-like stones to create a stunning pendant attached to a gold-like necklace (41cm), in case. *Extremely fine - uncirculated.* (4 + set)

\$120

1429

**Costume jewellery**, includes gold earrings each featuring three blue sapphires; gold earrings each with a floral Wedgwood centrepiece, in Wedgwood case; gold disc earrings each filled with crushed natural diamonds, in case of issue (one needs to be spot soldered on loose clip); gold dress rings, one with a feature of natural abalone shell (with original tag attached), another with small black pearls around a citrine, the last in the shape of a rose with a green centre stone. *Extremely fine.* (3 + 3 pairs)

\$80

All reference to gold indicates the colour of the metal.

1430

**Costume jewellery**, gold plated chains and other novelty items, includes large gate link necklace with nine diamond-like stones at end; another chain with large diamond-like stone in the centrepiece; pendant 'Live/Love/Laugh' with chain; greenstone cross with chain; other necklaces (3); gold plated bracelet; black pearl and gold plated chain; enamelled double pendant with old-time English dressed young man on each side; spoon brooch with garnet in ladle (clasp missing); key shaped brooch; penny farthing bike brooch made from an Australian penny and British farthing, gold plated in case of issue; Australian 1977 fifty cents for QEII silver jubilee, with suspension scroll and chain (2, one gold plated); gold plated Australian penny 1943 keyring; sundry badges including 'I've Been On Top Empire State Observatories' (2), Australian Junior Red Cross, Royal Enfield Motor Cycles, Cazna (Anzac spelt backwards on badge) Club, and Melbourne Legacy badge; Ulladulla Funland token; domed paperweight for Peninsular and Oriental Steam Navigation Company, featuring the company's arms inside a colourful navigational compass rose; other damaged items (3). *In large shell style plastic hinge-lid jewellery case, poor - extremely fine.* (33)

\$70

1431

**Costume jewellery**, includes an impressive diamond and emerald-like necklace (51cm) with a matching floral spray brooch; matching ornamental diamond-like pair of brooches; also natural round bead garnet necklace (43cm). *The first in plastic, decorated case with central feature of a heart, extremely fine.* (5 pieces)

\$70

1432

**Costume jewellery**, noted brooches (5) one featuring pearl decoration but with one pearl missing, oval locket brooch with enamelled dog's image on face, with pin backed bar suspender; silver framed 1966 silver fifty cents pendant; perfume bottle in style of a metal pocket watch suspended on neck chain (80cm); Xmarine ladies quartz wristwatch in grey and gold coloured case with matching bracelet; Rolex ladies wristwatch, replica (dial glass cracked), with leather band. *Very fine - extremely fine.* (10)

\$50



1433\*

**Gent's gold half hunter pocket watch**, by August Vogl, Wien, in 14ct gold with white dial and gold hands, Arabic numerals, with seconds dial, also with Arabic numerals, works cover inscribed, 'August Vogl/Wien/I Kohlmarkt 20', with triple link gold fob chain (approx 10cm long) and at end an orange disc within a gold border with engraved edge, 'J'y pense' (Thinking about it) (tot wt 111.1g). *Appears not to be working, otherwise very fine - good very fine.*

\$1,000



1435\*

**Gent's hunter pocket watch**, Omega, rolled gold Dennison case (50mm), top wind, white enamel dial with black Roman numerals, subsidiary seconds hand. *In working condition but not tested for accuracy.*

\$250

1436

**Gent's silver pocket watch**, white dial and seconds dial, missing hands and glass cover, key wind (no key), no brand but hallmarked for London 1847; silver hallmarked vintage pocket pencil; a variety of other bits and pieces, noted an Olivia ladies wristwatch with rolled gold bracelet and a vintage heart shaped rolled gold locket with three stones inset in face and a large floral costume jewellery brooch, numerous other items including single earrings, cufflink, various shirt studs and chains. *Poor - very fine.* (lot)

\$100



1434\*

**Gent's gold half hunter pocket watch**, by Longines, in 14ct gold machine turned case, with cream dial and decorative blue Arabic numerals, with seconds dial, also with blue Arabic numerals, works cover inscribed, 'Longines 7 Grand Prix with images of awards', (tot wt 69.2g), in fitted leather case. *Appears to be working, good very fine.*

\$500



1437\*

**Gent's hunter pocket watch**, c1921, Elgin in rolled gold case by Keystone Watchcase Co, machine turned case with shield on lid for inscribing initials, top wind, white enamel dial with subsidiary seconds dial, black Roman numerals and hands, works cover inscribed, 'W.C.S./1st Hammer 1st Shot/1st Discus/P.Munro/1.1.21'. *Dial cover missing, a few cracks in enamel near edge, not working, otherwise fine.*

\$100

Presented to Peter Munro by WCS (Wairarapa Caledonian Society) for his success at the WCS sports competition held at Park Oval, Masterton on Saturday 1 January 1921 and attended by a large gathering from all parts of the Wellington district.

Peter Munro was born at Tongue in County Sutherland, Scotland in September 1892. He became a champion athlete in Scotland and in 1912 he arrived at Perth in Australia and joined the West Australian Police Force and also competed in local athletics with great success. He was a member of the police tug-of-war team which won the West Australian title. In 1914 he moved to New Zealand and soon made his mark in athletics. In WWI he served with the NZ Expeditionary Force and was 'mentioned in despatches'. In 1918 he was commissioned an officer and in the same year represented New Zealand at the American-British Empire Services' Sports at Stamford Bridge. At this competition his winning shot was only 17 inches short of the world record at the time.

After returning from the war Peter joined the NZ Police Force at Wellington as well as the Wellington Amateur Athletic Club. During his career he won five Australasian Championships and won more NZ Amateur Athletic Association medals than any other athlete.

With full biography.

1438

**Gent's hunter pocket watches**, Elgin in rolled gold case by Cyclone, machine turned case with shield on lid for inscribing initials, top wind, white enamel dial with subsidiary seconds dial, black Roman numerals and hands, works cover inscribed, 'James Clark'; another The Inwajeco in rolled gold case by Dennison Watch Case Co, machine turned case with shield on lid for inscribing initials, top wind, face cover missing, white enamel dial with subsidiary seconds dial (the dial with crack and some foxing), black Roman numerals and hands; another Howard in rolled gold case by Cyclone,

machine turned case with lid missing, top wind, white enamel dial with subsidiary seconds dial (face cover and hand missing), black Roman numerals and hands (one missing); another, Angus & Coote Ltd, Bushman's Lever, in plain nickel plated steel case, top wind, white enamel dial with subsidiary seconds dial, black Roman numerals and hands. *With defects as mentioned, the last appears to be working, the rest not working, otherwise very good - fine.* (4)

\$70

1439

**Gent's pocketwatch**, c1990s, Jacques du Manoir, Swiss made, steel and gold coloured case (48mm), quartz movement, white dial with date and black Arabic numerals, sweep seconds hand, gold plated fob chain attached. *As new in box, in working condition but not checked for accuracy.*

\$100

1440

**Gent's and ladies wristwatches**, Longines, c1990s, with crown symbol of King Hussein of Jordan, both gold plated, the gentleman's watch automatic, the lady's a quartz movement. *Both as new, the first working but not tested for accuracy, the second not working (needs new battery), in Longines presentation cases with Royal crown symbols.* (2)

\$300



1441\*

**Gent's wristwatch**, c1998, Franck Muller Cintree Curvex Casablanca, model 2852 SC, no. 361, automatic, in 18ct rose gold case (45x30mm), platinum rotor, silver dial with black Arabic numerals, sweep seconds hand, Franck Muller signed black faux alligator skin bracelet with gold buckle. *Hardly worn, as new, in working condition but not checked for accuracy.*

\$9,000

Together with Franck Muller, Geneva walnut finish presentation box and certificate of purchase dated 29 May 1998.





1442\*

**Gent's wristwatch**, Omega Constellation Electronic f300Hz, c1970s, case with rolled gold top and stainless steel back (45x38mm), gold dial, hands and baton markers, red sweep seconds hand with date at 3 o'clock, two toned after market stretch bracelet. *In excellent condition, nearly as new, working but not tested for accuracy.*

\$450



part

1443\*

**Gent's wristwatch**, Omega Seamaster, c1970s, stainless steel case (35mm), manual wind, cream dial (discoloured) with silver baton numerals and sweep seconds hand, after market black leather bracelet [illustrated]; also, ladies Swiss made rolled gold wristwatch, c1940s. *The first running but not tested for accuracy, the second not working.* (2)

\$250

1444

**Vintage gent's Rolex wristwatch**, c1930s, in 9ct gold (tot wt 16.17g), no band. *Missing seconds hand, dial numbers faded, no winder, one band strap holder replaced, working order unknown, poor.*

\$150

1445

**Gent's wristwatches**, includes Junghans quartz, gold coloured with bracelet and original case, this damaged; Seiko SQ100 quartz, an automatic and a kinetic, the first with damaged leather band, the other two with bracelets, all in stainless steel; Felicia, De Luxe automatic in stainless steel with bracelet; Felca manual wind in stainless steel with expanding bracelet; Tudor automatic in 9ct gold (approx 16g) with expanding gold coloured bracelet (back scratched and dial heavily marked); Unicorn manual (c1952), in stainless steel with leather band, reverse inscribed. *Some appear to be working, poor - very fine.* (8)

\$350

1446

**Gold wristwatches**, includes a gent's unbranded model (damaged), faded inscription on back; a vintage ladies, c1929, unbranded, with rolled gold link bracelet, inscribed on back; another ladies, Tudor brand, with expanding gilt stainless steel bracelet, spotting on watch dial; another ladies, Tudor c1954, with expanding gilt and stainless steel bracelet, inscribed on back; the last in 14ct gold and the rest in 9ct gold. *All appear to be not working, the bracelets on ladies' watches very fine - extremely fine, the watches are overall poor - fine.* (4)

\$250

The Tudor watches with original cases.



1447\*

**Ladies wristwatch**, Rolex Cellini, possibly model 4095, c1975, manual wind, in 18ct yellow gold (tot wt 60.9g), with integral bracelet in gold (18ct, 170x16mm) with bark finish and adjustable clasp, case (28x22mm) numbered 4268348, gold dial with bark finish, gold hands and gold baton numerals, dial case and bracelet all signed Rolex. *In working condition but not tested for accuracy, in extremely fine condition having had little use.*

\$2,500

1448

**Ladies wristwatches**, includes marcasite decorated types with matching bracelets, two in silver, one by Lega, the other unnamed (missing part of bracelet closer), and also a Delta brand; a vintage Public with leather band; other more modern quartz models with matching bracelets (two of these are expanding type), one silver coloured by Felicia, and three gold coloured by Pulsar (2) and Seiko. *Working order unknown, very good - extremely fine.* (8)

\$100

Two watches with original cases.



1449\*

**Ladies Mondaine brooch watch**, in shape of a marcasite decorated coach with driver pulled by two horses, manual wind in stainless steel case. *Appears to be in working order, extremely fine.*

\$80

1450

**Ladies wristwatches**, Omega de Ville, c1990s, stainless steel case (26x22mm), black face with baton numerals at compass points; Seiko quartz, c1990s, gold plated with stainless steel back, integral bracelet, case (25x9mm), gold face and hands with black baton numerals at compass points. *Not working, very fine.* (2)

\$70



1451\*

**Ladies wristwatches**, the first a Valgine in stainless steel case set with 36 small genuine diamonds around the top, silver dial with bar indicators for the hours except for 12, cord bracelet; the second is unbranded in a square 14ct gold case (tot wt approx 14.8g), cream face with Arabic numerals, cord bracelet. *Neither appears to be working, second face dirty, very good, the first works and face loose inside case, otherwise very fine.* (2)

\$100

1452

**Ladies pendant watches**, all in gold coloured cases, includes a Calibri quartz with long gold plated suspension chain; Seiko manual wind with long gold plated suspension chain; Ascot Sky Master, heart shaped in machine turned case, manual wind with second hand. *The first in case of issue with original certificate, working order unknown, the other two appear to be working, very fine - extremely fine.* (3)

\$60

1453

**Sextant and watches**, a fine reproduction by Smith & Co, London of a sextant (boxed), 6" Brass Astrolabe Sextant with a decorative wooden box, nautical 6" Inches (a new item made to look like an antique), it comes in an attractive wooden box with brass accents, the sextant with a beautiful brass finish; watches, reproduction military style watches (17) as a set as part of an issue by WWW.military-watches-collection.com.au representing issues from German, French, Russian, British etc as watches used by the various armies around the world; also literature and magazines on military watches; together with a coin container made from two 1799 Great Britain halfpennies. *The first and last fine - very fine, others as new as produced.* (lot)

\$150

1454

**Souvenir teaspoons and sugar spoons**, mostly with enamelled disc at handle end (62), various other non-souvenir small spoons including condiment types for normal usage (24). *Stored in a hand painted and decorated timber hinged-lid box, very good - extremely fine.* (86)

\$70

1455

**Souvenir teaspoons and sugar spoons**, by Stuart (40) with enamelled disc at handle end, mostly Australian locations, others without enamelled disc for Sydney featuring Harbour Bridge (4), Royal Visit 1954 (2), D.J's 125th Year (3), also others with figures at handle end (4). *Mostly very fine - extremely fine.* (53)

\$60

1456

**Souvenir condiment spoons**, from various locations, all with enamelled highlight at handle end (9); another but plain; souvenir metal and enamel book marks (2); another with N on top and another plain; tie clip; small silver (?) star brooch; gilt and enamel on silver floral pendant with 70cm silver-like chain; hollow nickel bar pendant; souvenir square mesh purse (56mm) with inset enamel shield for Golden Gate Bridge, S.F., California; Pontiac enamel and leather key ring; single pink abalone shell; jeweller's loupe, fold-out nickel 10X pocket magnifier by Carton; another similar but in nickel and plastic by Olif. *Fine - very fine.* (24)

\$50

1457

**Antique napkin ring set of two**, in sterling silver, hallmarked for London 1888 by maker, Willam Evans. *In original, fitted, leather, satin and velvet lined, hinged-lid box.* (set of 2)

\$100

1458

**Antique napkin rings**, in sterling silver, four different hallmarks including Minshull & Latimer, Birmingham 1900, inscribed with illegible initials; Robert Chandler, Birmingham 1902, inscribed with initials 'JEP'; Richard Martin & Ebenezer Hall-Martin & Co, Sheffield 1908, inscribed 'Annie'; and Relason Brothers, Birmingham 1913, this last one inscribed, 'R.Mitchell'. *Very fine.* (4)

\$70

1459

**Novelty napkin rings**, all in EPNS, includes one with a cricket bat at one side and a wicket on the opposite side; one with a small boy at side; one decorated with a bird in a floral wreath and the ring resting on a horse-drawn wagon; also another oval style with an enamelled cross symbol on side. *Very fine.* (4)

\$60



part

1460\*

**Australian napkin rings**, all in EPNS, includes one pair each with a kangaroo at side (different types); another pair, one with a kangaroo on top and the other with an emu on top; also a single featuring an emu looking at napkin holder with both resting on a gum leaf, top of holder inscribed, 'CAO'B'. *A few need cleaning, otherwise very fine.* (5)

\$100

1461

**Vintage napkin ring set of four**, in EPNS, in original leather, satin and velvet lined, hinged-lid box. *Very fine.* (set of 4)

\$50

1462

**Collection of antique and other silver tongs and spoons**, includes various tongs, George III, 1804 London by Stephen Adam I (142mm); 1892 London by Francis Higgins (102mm); 1905 London by James Wakely & Frank Clarke Wheeler (88mm); 1934 Sheffield by M&W (82mm); 1915 London by RB (80mm); 1926 London by JD&S (110mm); fork tongs, 1914 London by E.Viners (80mm); teaspoons, 1915 London by D&S (95mm); 1893 London by PP Ltd (Payton Pepper & Sons Ltd?) (110mm) with voided initials HGC around cross golf clubs at end; 1914 Birmingham by A.J.B. (100mm); fork, no hallmark and maker's mark unclear; antique opera glasses, in brass with body decorated with abalone shell, across the main bridge is inscribed, 'A.L.Dixon/Feby 17th 1902', missing one large and one small piece of glass; also crocodile skin-like belt pouch (9x11cm). *Mostly fine - very fine.* (13)

\$200



1463\*

**Georgian silver snuff box**, (75x45x22mm), ornate edges with engine turned base, in sterling silver (98.6g), by T.S. (possibly Thomas Spicer), hallmark for Birmingham 1823, lid inscribed 'The Gift of/D.Burns 19th Regt./To/Francis Crumpe M.D./Being a Testimonial of Regard as well as Gratitude for his Professional/Attention/29th December 1826'. *Very fine.*

\$600

Doctor Francis Crumpe was from the landed gentry, the Crumpes of Barleymount, County Kerry, Ireland. In 1818 he was at the London Royal College of Surgeons and died in 1877.



1464\*

**Silver snuff box**, c1850s, Continental silver (55.5g), probably of Russian make, stamped '84' engine turned and hand engraved (62x40x15mm), by 'V.H.', scenes all around, possibly one of Peter the Great (St Petersburg). *Dent in front, otherwise fine.*

\$1,000



1465\*

**Gold sewing thimble**, machine turned pattern with plain edge band, hallmarked 9ct (3.55g). *Very fine.*

\$60

1466

**Vesta in silver**, hallmarked for Birmingham 1906, floral decorated surface with a central shield inscribed, 'LM'; vintage gent's lapel pin, or tiepin, in 9ct rose gold (approx .3g) with small diamond in centre, backing fitting with safety chain not original; gent's cufflinks in gold finish with onyx centre panel with featured grey cartouche containing helmeted head of a Roman soldier (as new); Excelsior Park stopwatch by Lauris, in stainless steel. *Fine - extremely fine.* (4)

\$80

1467

**Professor Holloway's**, small ceramic ointment pots, without lids (ht 32mm, dia 48mm). *One jar crazed and with chip and cracks to rim, very good.* (2)

\$100



1468\*

**Vintage nut pill box**, with 9ct gold hinged-lid and edge lining and with gold support wires and a basket-like handle for suspending from a necklace, the lid engraved with floral decorations. *Good very fine.*

\$150

Ex John Houstone Collection.



1469\*

**Antique business card case**, in sterling silver (95x63mm; 65.65g), hallmarked for Birmingham, 1905, by A&LLd (Adie & Lovekin Ltd), very decoratively engraved case and with design of two birds in tree branch on the hinged, lift-up flap, inside light gilt, below flap is shield with initials, "EKG", and inside is a business card for Norma Joan Goodwin (obviously related to EKG). *Nearly extremely fine.*

\$100

1470

**ARA Libertad keyring**, in .900 fine silver (32.25g), features lifebuoy with coiled rope around and on the buoy is the name, 'ARA Libertad', below is a length of silver knotted rope attached to a keyring; small silvered sailor statue (55mm high), with blue enamelled name, 'ARA' on his hat band; vintage 'Put and Take' spinner in brass, 8-sided with sides impressed as follows, 'T ALL/P2/T3/P1/T1/ALL PUT/T2/P3'. *Very fine.* (3)

\$60

The ARA Libertad is a class A sailing ship that serves as a training school vessel in the Argentine Navy. It is one of the largest and fastest tall ships in the world.

'Put and Take' is a form of teetotum, a game spinning top based on a type of dice used by Ancient Greeks and Romans. The game was popular with American troops during WWI.

1471

**Silver Map**, The Royal Geographical Society Silver Map, etched in sterling silver, overlaid on board and decorated with 24ct gold, in frame of issue by Franklin Mint Pty Ltd, 1976, believed to contain 4oz of silver. *Limited edition with booklet, frame with general wear, FDC.*

\$150



1472\*

**Pair of German percussion pistols**, by Sauer & Son, c1850s, 20cm long octagonal barrel, twirled rifling, fixed sight, rear sight in silver, consecutive serial numbers on underside of barrels, 0021270 and 0021271, 32 bore, one missing ram rod, most metal parts except barrel decoratively engraved, top of barrel engraved, 'I. P. SAUER u SOHN a SUHL', plate on butt of grip engraved, 'R. v B'. *One pistol with small piece missing from black forewood cap and the hammer on one does not cock back fully, very light underlying rust on barrels, otherwise very good condition.* (2)

\$2,500

These pistols were gifted to Lt Cecil Daniel Lockhart while he was convalescing in London. According to his family, the gift was made to him by Colonel Ricketts of the British Army as a reward for his 'bravery and leadership' in the First Battle of Villers-Bretonneux (30 March - 5 April 1918).

In the Official History of Australia in the War of 1914-18, Vol V, The A.I.F. in France 1918, by C.E.W.Bean, Lieutenant Lockhart is mentioned along with Sergeant Lawton as the last to leave during an intense battle at Villers-Bretonneux. In another published account it is related how determined Lieutenant Lockhart was in maintaining machine gun fire on the enemy in the face of fierce fire from the Germans. When ammunition was exhausted, one of his men, Sergeant Charlie Lawton, was shot and despite the ongoing assault by the Germans, Lockhart refused to leave his sergeant and instead picked him up and tried to carry him to safety. Unfortunately he fell and the Germans advanced upon them. Lawton in the meantime had passed away from his injuries and Lockhart, with Lawton on top of him, was able to feign death in spite of being kicked by a German trooper to see if he was still alive. The Germans then proceeded to shoot all men who were lying wounded in the face of their advance. When they had gone, and as the daylight faded, the injured Lieutenant Lockhart was able to crawl to the safety of the allied front line.

Cecil Daniel Lockhart, correspondence clerk, age 21, born at Summer Hill, NSW; Enl.20Mar1916 in 9 MG Coy; Emb.01May1916; promoted through the ranks and appt Lt 15Feb1918; invalided to UK 19Apr1918; RTA 13Apr1919; Appt terminated 27Jul1919; awarded OBE in King's Birthday Honour List 1936 for social services in the State of NSW.

With research.

See also lot 2156.

Please note: If you wish to view or purchase this item you will be required to produce a current gun or driver's licence to staff.

No mail out for this lot, collection only from the Sydney Office.



1473\*

**Rare 4-barrel Sharps' pepper box derringer**, c1880s-1890s, serial number 4892, 22 short calibre, 2-5/8 inch 4-bbl cluster with pin front sight, rotating firing pin, brass frame with standard markings around the hammer screw hole, 'Tipping & Lawdon.Sharps' Patent', hammer cocking spring not working. *Handle grips missing, some rusting to barrel, trigger and hammer need repair work, otherwise good condition.*

\$600

Please note: If you wish to view or purchase this item you will be required to produce a current gun or driver's licence to staff.

No mail out for this lot, collection only from the Sydney Office.



1474\*

**Shackleton's Last Antarctic Expedition**, Southward in the "Quest", c1922, a cardboard body Kinimette view box with twelve slides in original black paper covered cardboard box (approx 17x7.3x7cm) with top label showing an explorer at the Pole and initialled 'JWS' (?) and 'Mar', and on one end is the label of Kinimette with instructions for viewing. *Cardboard box well worn and loose at one corner, the rest fine.*

\$1,500

With research that includes a photocopy of the expedition team and their signatures. The original set of 12 scenes from the expedition feature whale-flensing and zoological and geological specimens. It was promoted that further sets of 12 slides would be issued at the time but it is unknown if this eventuated.

1475

**Vintage instruments**, speed indicator by L.S. Starrett, Atholl, Mass., USA, patented April 19th 1897, in case but this damaged; five small tool bits (drills, screwdriver etc) in nickel plated brass centre screw tight cylinder; another thinner cylinder with fold-out needle, probe and small ladle; metal folding, tapered cup in pocket watch-style case; tuning fork; small fold-out magnifier in metal; also metal box with fold-over brackets at each end to form legs and slide-out compartment with cloth bed in centre (D2.4xW4.5xL11.5cm and 19cm folded-out), by D.R.G.M. (Deutsches Reich Gebraumeister), with 'Queen' professionally inscribed diagonally across top (use for this item unknown); also Vesta in nickel plated brass with two cylindrical containers of wax matches by R. Bell & Co, Melbourne, these both unused and full; two plastic storage containers for Australian decimal coins, one rectangular for three values and one circular with lid for 5c-\$2, type where coin is inserted and holder is depressed to accommodate next coin; Pear's Soap fridge magnets (3, unused in sealed pack); Cessna aircraft logo in coloured plastic (as new). *Good fine.* (16)

\$100

The speed indicator used for measuring the speed of rotation of shafts in machinery, such as lathes in early 20th century.

1476

**Vintage collectables**, includes sovereign case in silvered brass and nickel; snuff container silver plate bronze with a clasp at each side for suspension; vesta case in brass; cigarette case, machine turned pattern in silvered finish, gilt lined; small swing arm cigarette lighter in steel; shoelace hook; leather purse with pull-out coin compartment; small leather purse bearing gold blocked name, 'Coneron & Leeming, 17 Moor Lane, Clitheroe'. *Good - fine.* (8)

\$100

1477

**An accumulation of unusual items**, including an experimental steam engine; North Korea 500 badges of 'the great leader' all of the same design in a box, assorted sweets and miniature Xmas boxes; 1900 Xmas tin for South African war; other tins (8) these mostly cigarette tins. *Fair - as new.* (lot)

\$100



part

1478\*

**Chinese box-shaped padlock**, in brass (7cm long), a vintage item engraved with flowers and birds and Chinese characters for long life, happiness and everything together, with required brass key strip; miniature Ronald Chesney, Hohner mouth organ, made in Germany; seal stamp with polished agate-like handle and brass, circular base with initials, 'V.S.'; vintage engineer's 'feeler guage' for measuring gap widths, penknife-like in nickel with six fold-out strips, on one side marked '003/004/006/008/010/018 inches' and on the other side, 'TERRY Made In/England'; crossed oars lapel badge with pin fitting; miniature, silvered Queen chess piece lapel badge with pin fitted (4); post WWII cleaning bristles, paper wrapped, made in US Zone, Germany. *Good - very fine.* (10)

\$70

1479

**Carriage clock**, cast in gilt metal (8.5cm high + lift-up handle), glass top to view spinning wheel, white dial with black Roman numerals and hands, at each corner a half naked woman, opening back door missing hinge; vintage desk pen and ink stand in stained timber (9.5x5.4cm), with two glass inkwells, missing lids and with a dip-style pen, this with plastic handle and all fittings rusty; a circular, machine turned timber stand (17.5cm), with machine hollowed section in middle for fitting a trophy or small statue. *The clock not working, fine - very fine.* (3)

\$50

1480

**Vintage eyeglasses**, gold filled oval frame glasses (John Lennon style), in hard leather case marked A.J.Higgs & Barker, 5&6 T&G Bldg, 201 Elizabeth St; another but rimless style and irregular cut shape, in case marked D.J.Hart, Optometrist, Ashfield & Kingsgrove, both pairs c1940s vintage. *Very fine.* (2)

\$50

1481

**Royal Hobart Regatta Association**, Tasman's Centenary Regatta, 1938, on large silk banner (approx 48x100.5cm including surrounding tassel), with listing of officials and full race programme and listing of all competitors, also programme for other competitions, too many to list but includes full programme of wood chopping with description, printed at the Mercury Press, Hobart. *Fold creases, staining to back and a few stain areas and toning on front, otherwise in good condition for age, very fine.*

\$50

1482

**Brandy in a glass slipper**, Cinderella Dream Nikka Brandy Raisin X.O, 180ml, tag no.01A44, unopened and in presentation plastic box. *Box with small star crack at top, brandy slipper uncirculated.*

\$50

1483

**European**, possibly Spain, saddle-shaped vase, (early 19th century), crazed finish decorated with blue and gilded family crest, pegasus above, floral emblems around, 430mm wide, 275mm high. *No cracks or chips, very fine.*

\$500



1484\*

**Greece**, bronze head of Tyche? with headress, made in the Roman period, probably 2nd-3rd Century A.D., broken off at neck (40x25mm), with encrustation. *Fine and rare.*

\$150

It is believed to be from a find in Eastern Turkey.

1485

**Indonesia**, Srivijaya, silver ring 600-1200 AD, (12.76g) fitted with a fish design as its main device. *Very fine, rare.*

\$50

1486

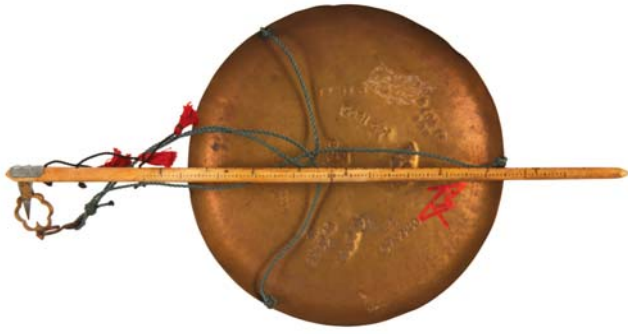
**Malaysia**, Pahang, round hat or mound shaped tin ingot 36mm (59.48g), plain without markings, c17th century. *Fine.*

\$50

1487

**Tibet**, silver scroll weights. *Extremely fine.* (2)

\$70



1488\*

**Chinese "Opium" Scales** (2), a type of steelyard scales, as described above in the footnote, pan diameter 132mm, with bone arm handle for balance for the counterbalance, pan with many impressed markings including date 14.5.1868, Chinese characters and other numbered markings (probably certifying correctness in weighing); a second example as a two pan balance known as a money scales with 2 x 48mm pans and with a metal arm supporting both pans and a pointer for balance; lot includes 2 stamped weights for the 'opium' scales. *Very fine and both very scarce.* (2)

\$150

Ex Patrick J. O'Rourke Collection.

See note below.

The scales in the second example described below, has for its use needed to be accurate on the one hand and small enough to be easily transported from one place to another. Most money scales, therefore, have their own, usually fitted, metal or wood containers. Money scales can be also described as equal arm balances,



1489\*

**Chinese "Opium" Scales**, these are also a type of steelyard scales, described below, pan diameter 72mm, as stored with a wooden box in the shape of a fish or violin, lot includes a lead weight for counterbalance. *Very fine and rare being intact.*

\$150

Ex Patrick J. O'Rourke Collection.

They have one pan suspended from an unequal ivory arm, and a brass, lead or metal weight for counterbalance. A load is put on the pan and then the weight is moved a long the arm until the scale is balanced. These scales are usually found inside a wooden box, with the distinctive shape of a fish or violin (as in the above example). These scales originated in China and were first mentioned in western literature in the 17th century, as Dutch scales. They were used to weigh silver, gold, gems, and medicinal powders.

1490

**Chinese "Opium" Scales** (2), a type of steelyard scales, as described above in the footnote, pan diameter 67mm, with bone arm handle for balance for the counterbalance; a second example 35mm pan and with a metal arm handle with engraved Chinese characters in the pan and on the arm. *Very fine and both scarce.* (2)

\$100

Ex Patrick J. O'Rourke Collection.

See note above.

1491

**Chinese "Opium" Scales** (2), a type of steelyard scales, as described above in the footnote, pan diameter 200mm, with wooden arm handle for balance for the counterbalance; a second example 35mm pan and with a bone arm handle. *Very fine and both scarce.* (2)

\$100

Ex Patrick J. O'Rourke Collection.

See note above.

1492

**GPO broad arrow weights**, 1956-1959, black cast iron ring handled, 7lb, 4lb, 2lb, 1lb, 1/2lb, stamped with EIIR crown and PO identification number inside base. *Very fine.* (5)

\$100

1493

**China**, Chou dynasty, Warring States period, c.400-220 B.C., and Han Dynasty (221 B.C - 206 A.D.) of various knives of various shapes mostly as tomb pieces, several with loop holder at the handle end, various sizes and shapes (13-18cm), differing from the normal knife money, one with a broken end only, another as a modern iron piece (13.5cm). *Most with green oxidation, otherwise fair - fine.* (9)

\$120

Ex Patrick J. O'Rourke Collection and previously from Moorabool Antique Galleries (one with hole in blade and other with a block solid handle).



1494\*

**China**, Han Dynasty, (226 BC-220 AD), bronze hand mirror, 67mm, (115.46 g), round shape, decorated with gold Chinese lions and peacocks as the central motif, centre piece a eyelet for holding and hanging, also with extensive decoration arranged in a circular fashion as swirls around outer edge. *A well preserved, dark brown/black patination, centre in gold, an extremely fine example and very rare.*

\$1,500



1495\*  
**China**, Han Dynasty, jade coloured yellow-orange carved as a phoenix, 45 x 45 x 15 mm, (43.09 g). *Very fine*  
 \$300

1496  
**China**, Han dynasty, ancient bronze arrowhead, 58mm long; Republic, silver boat or shoe shaped sycee ingot, made on a flat oval base, in a metal mould with high edges, modern manufacture in good silver, made as a presentation gift for New Year, birthdays or weddings, as a silver ingot, 1.1 ounces (36.4 g). *Very fine.* (2)  
 \$200

1497  
**China**, Ming Dynasty, small Chinese Swatow blue and white jars (3) from the Ming Dynasty (1368-1644) decorated with floral motif, height 45-49mm, diameter 54mm, these pieces made in the late Ming Dynasty, in China, c1600. *Minor chipping, otherwise fine.* (3)  
 \$120

Please note: No mail out for this lot, collection only from the Sydney Office.



1498\*  
**China**, Ming Dynasty, Chinese Swatow blue and white klapmuts bowl from the Ming Dynasty (1368-1644) decorated with floral motifs as a plant and ornamental design, height 72mm, diameter 220mm, this piece made late Ming Dynasty, in China, c1610. *Minor cracking, and a small chip in base of bowl, otherwise fine.*  
 \$300

Please note: No mail out for this lot, collection only from the Sydney Office.



1499\*  
**China**, jade bracelet, 19th century, 75mm, tri-colour tones of green, russet brown and milky white. *Extremely fine with attractive translucence.*  
 \$5,000

Ex Reeman Dansie auctions, UK.



1500\*  
**China**, Qing dynasty, white jade carved boy sleeping in lotus, finely carved in milky jade, 50mm wide. *Extremely fine.*  
 \$300



1501\*  
**China**, carved coral snuff bottle, (19th century), of naturalistic form depicting a standing deity on the face, cabochon stopper with bronze snuff spoon at top, 60mm high. *Natural indentations, otherwise very fine.*  
 \$200





1502\*  
**China**, Shoushan stone seal, 19th century, of naturalistic form in grey soap stone with dragons carved in brown highlights, private name seal engraved to base, Chinese inscription to back, 55mm high. *A few chips, otherwise very fine and attractive.*

\$300

1503  
**China**, Yuan style stoneware bowl, (c.1820's), crazed finish, flared lip, 160mm wide, 70mm high. *Very fine.*

\$150

1504  
**China**, celadon bowl, (19th century), of deep broad form with raised flowers and leaves to the interior, double Chinese characters in blue to the base, 195mm wide. *Extremely fine.*

\$150

1505  
**China**, bronze vase, (late 19th - early 20th century), of baluster form with gilt dragons emerging from clouds, base moulded with four character cartouche, 180mm high. *Very fine.*

\$100



1506\*  
**China**, bronze seated meditating Buddha, 19th century, in full lotus position in robes on an embossed pedestal, two tone metal with Chinese character signature to base of back and floral symbol on base, 315mm high, 180mm wide. *Very fine and attractive.*

\$2,000

Ex Aalders Auctions, Sale 79, lot 462.

1507  
**China**, seated laughing Buddha, (late 19th-early 20th century), solid carved timber with bone and shell inlaid eyes and teeth, 275mm high, 160mm wide. *Some cracks, otherwise very fine.*

\$300

Ex UK auction.

1508  
**China**, glass coin shaped charm, (20th century), representing a coin of the Suzhou mint in Jiangsu, clear glass patinated with brown toning, 50mm wide; China, wooden tally stick, (19th century), holed for suspension, ink characters down one side; Persia, iron dagger, (19th century), iron blade with Islamic characters, curved ebony handle with base silver mount, 300mm long. *Very fine.* (3)

\$150

1509  
**China**, carved jade bangle, (20th century), bright green and milky green colour, 70mm wide. *Extremely fine.*

\$100

1510  
**China**, vintage Chinese porcelain figures in original box together with a small porcelain top jewel box. *As new.* (lot)

\$100

- 1511  
**China**, WWII and earlier, photo album containing various scenes of Japanese and other forces in the field and possibly in Nanking, including street scenes of bomb casualties, harbour occupation scenes and damaged buildings. *Very fine in original album.* (24 photos)  
 \$300
- 1512  
**Aboriginal Wunda Shield**, 20th century wooden shield, 69x13cm; Papua New Guinea, miniature hand carved wooden canoe with mother of pearl inserts on one side, 53cm. *Handle repair on shield, otherwise fine.* (2)  
 \$100
- 1513  
**Camera lenses**, including Tamron 28-200mm, f3.8-f5.6 for Nikon and Vivitar 28-70mm f3.5-f4.8 macro for Nikon and compact camera Fujifilm 8.3 mega pixels with 4x optical zoom. *Condition not verified.* (3)  
 \$50
- 1514  
**Australia**, Olympic Games, pins, a wide assortment most with RRP of \$9.95, many mounted on sale cards as issued. *Unc.* (50)  
 \$100
- 1515  
**XVI Olympiad**, Melbourne, 1956, unused tickets, Boxing, West Melbourne Stadium Ringside Nov 30 £2/3/-; Cycling, Olympic Park Velodrome, B Dec 3 13/6. *Good extremely fine.* (2)  
 \$100
- 1516  
**Olympic Games**, memorabilia from the 1956 Melbourne Games including Opening Ceremony with tickets and official brochure, the XVI Olympiad book with autographs included on opening pages, includes photos of previous game events; Olympic Games Souvenir Directory and full programme (price 4/-); 2000 Sydney Games, includes Olympic pins, publications etc in one large container, includes Sunday Telegraph 2000 Olympic Torch Relay Pin collection (4 folders); also Animals of the World Pin Collection (2 folders); additional other pins for games (approx 50); Olympic Mascot Passport (2) with medallion; Olympic Club and Store boxed pins; Olympic Club magazine; certificate for Olympic Club and Olympic Club bag; The Australian Olympian Issue 03; Time magazine "Dream Run Sydney pulls of the best ever Olympics"; lot also includes Australian Numismatic Society publications of conferences 2010, 2012, 2014, Qld Branch 1962-2012 book; NAA Journals 2008-2014, Medals of the Australian Numismatic Society, other publications CAB, etc. *Mostly as new.* (100s)  
 \$100
- 1517  
**Olympics**, Sydney 2000, explanatory book set, descriptions on all Olympic sports, held in hardened plastic box with lid, having two buckles, carry handle on top, (25); Olympics, Sydney 2000, Paralympics, explanatory book set, descriptions on all Paralympic sports, (19 sports + village guide); Olympics, Sydney 2000, official report of the XXVII Olympiad, three volumes, two books, one CD. *Extremely fine.* (3)  
 \$200
- 1518  
**Gould**, John, Mammals of Australia, Bettongia Fasciata, (Banded Jerboa Kangaroo), original hand-coloured lithograph, heightened with gum-arabic, 530x360mm, C Hullmandel Imp, [1845-63], framed, overall size, 730x560mm. *Very fine and scarce.*  
 \$250
- Please note: No mail out for this lot, collection only from the Sydney Office.
- 1519  
**Gould**, John, Mammals of Australia, Dendrolagus Ursinus, (Black Tree-Kangaroo), original hand-coloured lithograph, heightened with gum-arabic, 530x360mm, C Hullmandel Imp, [1845-63], framed, overall size, 730x560mm. *Very fine and scarce.*  
 \$250
- Please note: No mail out for this lot, collection only from the Sydney Office.
- 1520  
**Gould**, John, Mammals of Australia, Dendrolagus Inustus, (Grizzled Tree-Kangaroo), original hand-coloured lithograph, heightened with gum-arabic, 530x360mm, C Hullmandel Imp, [1845-63], framed, overall size, 730x560mm. *Very fine and scarce.*  
 \$250
- Please note: No mail out for this lot, collection only from the Sydney Office.
- 1521  
**Gould**, John, Birds of Asia, Megaloemma Franklini, (Golden Throat Barbet), original hand-coloured lithograph, heightened with gum-arabic, 530x350mm, Walter Imp, [c1860], framed, overall size, 720x550mm. *Very fine.*  
 \$250
- Please note: No mail out for this lot, collection only from the Sydney Office.
- 1522  
**Gould**, John, Birds of Australia, Chalcophaps Jobiensis, Meyer, (White-bibbed Ground Dove), original hand-coloured lithograph, heightened with gum-arabic, 530x350mm, Walter Imp, [1875], framed, overall size, 720x550mm. *Very fine and scarce.*  
 \$250
- Please note: No mail out for this lot, collection only from the Sydney Office.
- 1523  
**Gould**, John, Birds of Australia, Merula Poliocephala, (Grey-headed Blackbird), original hand-coloured lithograph, heightened with gum-arabic, 530x350mm, Hullmandel & Walton Imp, [1880], framed, overall size, 720x550mm. *Very fine.*  
 \$250
- The Grey-headed Blackbird is now extinct.  
 Please note: No mail out for this lot, collection only from the Sydney Office.

1524

**Gould, John, Birds of Australia, Orthonyz Spaldingi, Ramsay, (Spalding's Orthonyx), original hand-coloured lithograph, heightened with gum-arabic, 530x350mm, Walter Imp, [1875], framed, overall size, 720x550mm. *Very fine.***

\$250

Please note: No mail out for this lot, collection only from the Sydney Office.

1525

**Gould, John, Birds of New Guinea, Carpophaga Van-Wyckii, (Van Wyck's Fruit pigeon), original hand-coloured lithograph, heightened with gum-arabic, 530x350mm, Mintern Bros Imp, [1875-88], framed, overall size, 720x550mm. *Very fine.***

\$250

Please note: No mail out for this lot, collection only from the Sydney Office.



1526\*

**Gould, John, Birds of New Guinea, Cyclopsitta Cervicalis, Salvad & d'Albert, (Western Golden-headed Fig Parrot), original hand-coloured lithograph, heightened with gum-arabic, 530x350mm, Walter Imp, [1875-88], framed, overall size, 720x550mm. *Very fine and scarce.***

\$250

Please note: No mail out for this lot, collection only from the Sydney Office.

1527

**Gould, John, Birds of New Guinea, Gymnophaps poecilorrhhoa, (Rusty-banded fruit-pigeon), original hand-coloured lithograph, heightened with gum-arabic, 530x350mm, Walter Imp, [1875-88], framed, overall size, 720x550mm. *Very fine.***

\$250

Please note: No mail out for this lot, collection only from the Sydney Office.

1528

**Gould, John, Birds of New Guinea, Manucodia Comrii, Slater, (Curl-crested Manucode), original hand-coloured lithograph, heightened with gum-arabic, 560x340mm, Walter Imp, [1877], framed, overall size, 690x550mm. *Very fine, scarce.***

\$250

Please note: No mail out for this lot, collection only from the Sydney Office.

1529

**Gould, John, Birds of New Guinea, Melidora macrorhina, (Hook-billed kingfisher), original hand-coloured lithograph, heightened with gum-arabic, 530x350mm, Walter Imp, [1875-88], framed, overall size, 720x550mm. *Very fine and scarce.***

\$250

Please note: No mail out for this lot, collection only from the Sydney Office.

1530

**Gould, John, Birds of New Guinea, Pachycephala Collaris, (Golden Whistler), original hand-coloured lithograph, heightened with gum-arabic, 530x350mm., Mintern Bros Imp, [1875-88], framed, overall size, 720x550mm. *Framing glass broken, otherwise very fine.***

\$250

Please note: No mail out for this lot, collection only from the Sydney Office.



1531\*

**Gould, John, Birds of New Guinea, Pitta Caeruleitorques Salvad, original hand-coloured lithograph, heightened with gum-arabic, 530x350mm, Walter Imp, [1875-88], framed, overall size, 720x550mm. *Minor water damage at base, otherwise very fine.***

\$250

Please note: No mail out for this lot, collection only from the Sydney Office.

1532

**Gould, John**, Birds of New Guinea, Ptilopus Fischeri, (Fischer's Frui-pigeon Dove), original hand-coloured lithograph, heightened with gum-arabic, 530x350mm, Walter Imp, [1875-88], framed, overall size, 720x550mm. *Very fine.*

\$250

Please note: No mail out for this lot, collection only from the Sydney Office.

1533

**Gould, John**, Birds of New Guinea, Semioptera Wallacii, (Standardwing Bird-of-paradise), original hand-coloured lithograph, heightened with gum-arabic, 530x350mm, Mintern Bros Imp, [1875-88], framed, overall size, 720x550mm. *Very fine.*

\$250

Please note: No mail out for this lot, collection only from the Sydney Office.

1534

**Sydney water colour paintings**, a group of four water colours on cardboard of Sydney Harbour and Hawkesbury River. 'Gap, Bluff & North Head, Sydney NSW' (15x11.5cm); 'The Gap' (18.5x12cm), details on the back states 'The Gap, Sydney Heads, scene of the wreck of the "Dunbar"....'; a scene of the heads from the Eastern Suburbs (18.5x12cm); 'The Old Hawkesbury Bridge', Hawkesbury River (18.5x12cm), each painting is also embellished with Australian wild flowers around part of the frame. *Some foxing on one painting, mostly very fine.* (4)

\$100

1535

**Prints**, assorted group including fishes (4), East Indies (6) all c1783-1850; Voyage of Captain James Lancaster to the East Indies old print, p368-376, produced in 1768; another as part of the Christian's Magazine issued in January 1792, 48pps, (State of the Gospel in the East Indies). *Mostly fine or better.* (12)

\$250

1536

**German New Guinea**, money card, posted Sep 29, [19]06, Glasgow to San Antonio Texas, USA fixed with 1d Edward VII; together with Norddeutscher Lloyd Bremen, advertisement card and another advertising Liebig Company Fleisch-extract. *Fine.* (3)

\$70

1537

**Australian casino souvenir decks of playing cards**, Casino Canberra, ACT, c1995; Conrad Jupiters, Gold Coast, Queensland, 1994 (2, one red dotted packet and one blue dotted); Wrest Point Hotel Casino, Tasmania, 1992 (2, one blue packet and one red). *Extremely fine.* (5 decks)

\$50

1538

**Cigarette Cards**, W.D. & H.O. Wills's, 1908 Time and Money in Different Countries complete set of fifty, 1911 United States Warships complete set of twenty five, 1906 Melbourne Cup Winners complete set of forty five, 1905 Interesting Buildings complete set of fifty, 1898 Conundrum complete set of twenty five, 1911 Australian and English Cricketers incomplete set 41/50 (missing No.42-50), 1904 Stage and Music Hall Celebrities incomplete set 37/50 (celebrities in rectangular frame), 1904 Stage and Music Hall Celebrities complete set of fifty (celebrities in oval frame) 1907 A Tour Round the World incomplete set 49/50, 1907? Female Stage and Music Hall Celebrities incomplete set 48/50 (celebrities pictured with red background), 1912 Types of the British Army incomplete set 35/50 (missing No.1,7,12,18-21,26-28,30,33,37,46,49), 1908 Views of the World incomplete set 174/215; American Tobacco Company, 1901 Australian Parliament incomplete set 43/44; Sweetacre Confectionery, 1932 Test Records incomplete set 30/32 (missing No.24,25); Goblin Foods, 1920's Old Cars 32 cards; various other trading cards (40); assorted cigarette tins (in wooden box) (17). *Several toned cards and worn tins, poor - fine.* (791)

\$200

## AUSTRALIAN GOLD COINS

### SYDNEY MINT SOVEREIGNS



1539\*

**Queen Victoria**, second type, 1864. *Very fine/good very fine.*

\$650



1540\*

**Queen Victoria**, second type, 1864. *Very fine.*

\$600

1541

**Queen Victoria**, second type, 1865. *Fine/good fine.*

\$400



1542\*

**Queen Victoria**, second type, 1865. *Fine.*

\$450

1543  
Queen Victoria, second type, 1865. *Very good.*

\$400



1544\*  
Queen Victoria, second type, 1866. *Good very fine.*

\$700

1545  
Queen Victoria, second type, 1866. *Nearly very fine.*

\$450

In a slab by PCGS as XF45.



1546\*  
Queen Victoria, second type, 1866. *Rim bruises, good fine.*

\$400

1547  
Queen Victoria, second type, 1866, 1867. *In a Monetarium case of sale, very fine. (2)*

\$1,000



1548\*  
Queen Victoria, second type, 1867. *Good fine.*

\$400

1549  
Queen Victoria, second type, 1867. *Nearly fine.*

\$400



1550\*  
Queen Victoria, second type, 1868. *Surface marks, otherwise nearly extremely fine.*

\$750



1551\*  
Queen Victoria, second type, 1868. *Nearly extremely fine.*

\$700



1552\*  
Queen Victoria, second type, 1868. *Good fine.*

\$400



1553\*  
Queen Victoria, second type, 1870. *Good very fine.*

\$700



1554\*  
Queen Victoria, second type, 1870. *Good very fine.*

\$650

Ex Noble Numismatics Sale 93 (lot 1720).



1555\*  
Queen Victoria, second type, 1870. *Good very fine.*

\$600



1556\*  
Queen Victoria, second type, 1870. *Very fine.*

\$500

**SYDNEY MINT HALF SOVEREIGNS**

1557  
Queen Victoria, first type, 1856. *Fair/poor.*

\$200



1558\*  
Queen Victoria, second type, 1857. *A little polished, otherwise good very fine.*

\$700

**IMPERIAL SOVEREIGNS - SHIELD REVERSE**

1559  
Queen Victoria, 1871 Sydney, WW in relief and incuse (McD.118a, b). *Nearly very fine; very fine. (2)*

\$800



1560\*  
Queen Victoria, 1872 Melbourne. *Very fine.*

\$400

1561  
Queen Victoria, 1873 Sydney. *Nearly very fine.*

\$380



1562\*  
Queen Victoria, 1877 Sydney. *Very fine.*

\$400

1563  
Queen Victoria, 1877, 1878 and 1879 Sydney. *Nearly extremely fine or better. (3)*

\$1,500

1564  
Queen Victoria, 1880 and 1884 Sydney. *Good very fine. (2)*

\$900



1565\*  
Queen Victoria, 1881 Melbourne. *Nearly extremely fine/good extremely fine and very scarce.*

\$700

Ex Ray Kaleda Collection, Noble Numismatics Sale 111 (lot 1142).



1566\*  
Queen Victoria, 1884 Melbourne. *Nearly uncirculated.*

\$650



1567\*  
Queen Victoria, 1884 Melbourne. *Extremely fine/good extremely fine. (2)*

\$900



1568  
Queen Victoria, 1884 Melbourne. *Very fine. (2)*

\$800



1569\*  
Queen Victoria, 1885 Sydney. *Nearly uncirculated.*

\$650

Private purchase from Monetarium in 1988.



1570\*  
Queen Victoria, 1885 Sydney. *Good extremely fine.*

\$700

IMPERIAL SOVEREIGNS - ST GEORGE REVERSE



1571\*  
**Queen Victoria**, 1873 Melbourne. *Subdued original mint bloom, uncirculated.*

\$800

Private purchase from Moneterium in 1992.

1572  
**Queen Victoria**, 1873 Sydney. *Fine scratch on obverse, fine.*

\$350



1573\*  
**Queen Victoria**, 1874 Sydney. *Nearly uncirculated and rare in this condition.*

\$1,000

Ex Douro Cargo (Moneterium, Feb 1997) with certificate.

1574  
**Queen Victoria**, 1875, 1880 and 1881 Melbourne (McD.151a, 159a, 161a). *Good fine - nearly very fine. (3)*

\$1,150

1575  
**Queen Victoria**, 1879 Melbourne (McD.157). *Good very fine.*

\$400

1576  
**Queen Victoria**, 1879 Sydney and young head, 1887 Melbourne. *Good very fine; nearly very fine. (2)*

\$800



part

1577\*  
**Queen Victoria**, 1880 and 1882 Melbourne (McD.159, 163a). *Extremely fine; good very fine. (2)*

\$800

1578  
**Queen Victoria**, 1880 and 1886 Melbourne; 1885 London. *Good fine; very fine; fine. (3)*

\$1,100



1579\*  
**Queen Victoria**, 1881 Melbourne (McD.161b). *Underlying brilliance, uncirculated.*

\$750

Ex Douro Cargo (Moneterium, Feb 1997) with certificate.

1580  
**Queen Victoria**, 1881 and 1886 Sydney (McD.160a, 170). *Very fine. (2)*

\$800



1581\*  
**Queen Victoria**, 1883 Melbourne (McD.165a). *Uncirculated.*

\$600



1582\*  
**Queen Victoria**, 1883 Melbourne (McD.165b). *Good extremely fine.*

\$600



part

1583\*  
**Queen Victoria**, 1885 Melbourne (McD.169c). *Extremely fine; good extremely fine. (2)*

\$850



1584\*  
**Queen Victoria**, 1885 Sydney. *Extremely fine/good extremely fine.*

\$450

1585  
**Queen Victoria**, 1886 Melbourne. *Very fine.*

\$370



1586\*  
Queen Victoria, young head, 1887 Melbourne. *Nearly uncirculated.*

\$600



1587\*  
Queen Victoria, young head, 1887 Sydney. *Good extremely fine/nearly uncirculated.*

\$500

1588  
Queen Victoria, Jubilee head, 1887 Melbourne (McD.175), also Great Britain, florin and threepence, 1887. *The last mounted on the reverse, fine - good very fine.* (3)

\$400

1589  
Queen Victoria, Jubilee head, 1887 Melbourne (McD.175b); old head, 1899 Melbourne. *Good very fine; nearly uncirculated.* (2)

\$750



1590\*  
Queen Victoria, 1888 Melbourne (McD.177b). *Nearly uncirculated/uncirculated.*

\$500

Private purchase from Monetarium in 2004.

1591  
Queen Victoria, 1888 (2), 1889, 1892 Melbourne. *Fine - good very fine.* (4)

\$1,500



part

1592\*  
Queen Victoria, 1888 and 1891 Sydney (McD.176c, 182). *Very fine; uncirculated.* (2)

\$850

1593  
Queen Victoria, 1888 and 1890 Sydney, 1891 Melbourne; 1890 and 1892 London. *The last nearly very fine, others fine.* (5)

\$1,850

1594  
Queen Victoria, 1888, 1893 (Jubilee), 1894, 1895, 1900 and 1901 Sydney. *Fine - good very fine.* (6)

\$2,250

1595  
Queen Victoria, 1889 Melbourne (McD.179a), 1890 Sydney (McD.180a). *Extremely fine or better.* (2)

\$800



1596\*  
Queen Victoria, 1889 Sydney (McD.178a). *Unmarked, nearly uncirculated.*

\$500



part

1597\*  
Queen Victoria, 1889, 1894 and 1896 Sydney; George V, 1925 Sydney. *Nearly extremely fine - uncirculated, the third scarce.* (4)

\$1,650



1598\*  
Queen Victoria, 1891 Melbourne (McD.183a). *Good extremely fine/nearly uncirculated.*

\$500

1599  
Queen Victoria, 1891 Sydney; Edward VII, 1908 Melbourne and George V, 1918 Perth and small head, 1931 Perth. *Nearly extremely fine - nearly uncirculated.* (4)

\$1,550

1600  
Queen Victoria, 1892 Melbourne; Edward VII, 1903 Melbourne. *Uncirculated.* (2)

\$850

Private purchase from Monetarium in 1994.

1601  
Queen Victoria, 1892 Melbourne; Edward VII, 1905 Perth; George V, 1923 Perth. *Second very fine, others nearly uncirculated.* (3)

\$1,150





1602\*  
**Queen Victoria**, Jubilee head, 1892 and 1893 Sydney. *Good extremely fine.* (2)  
 \$500



1603\*  
**Queen Victoria**, Jubilee head, 1893 Melbourne (McD.188a). *Nearly uncirculated.*  
 \$450

1604  
**Queen Victoria**, old head, 1893 (2) and 1895 Melbourne. *Very fine - nearly extremely fine.* (3)  
 \$1,150



1605\*  
**Queen Victoria**, 1894 and 1895 Melbourne. *Some obverse scratches, extremely fine; good extremely fine.* (2)  
 \$750

1606  
**Queen Victoria**, 1894-96, 1900, 1901 Melbourne. *Nearly very fine - nearly extremely fine.* (5)  
 \$1,850

1607  
**Queen Victoria**, 1894, 1895, 1900 (2) Melbourne. *Very fine - good very fine.* (4)  
 \$1,500



1608\*  
**Queen Victoria**, 1894 Sydney. *Nearly extremely fine/ extremely fine.*  
 \$370

1609  
**Queen Victoria**, 1894, 1900, 1901 Sydney; 1896, 1897, 1899-1901 Melbourne; 1898 London. *Fine - very fine.* (9)  
 \$3,150



1610\*  
**Queen Victoria**, 1895 and 1896 Sydney. *Extremely fine; very fine.* (2)  
 \$750



1611\*  
**Queen Victoria**, 1896 Melbourne. *Uncirculated.*  
 \$500

Private purchase from Monetarium in 1988.



1612\*  
**Queen Victoria**, 1896 Melbourne. *Proof-like mint bloom, uncirculated.*  
 \$450



1613\*  
**Queen Victoria**, 1899 Perth. *Nearly extremely fine.*  
 \$600



1614\*  
**Queen Victoria**, 1899 Perth. *Very fine/good very fine.*  
 \$500

1615  
**Queen Victoria**, 1899 Melbourne. *Nearly uncirculated.*  
 \$400



part

1616\*  
Queen Victoria, 1899 and 1901 (2) Melbourne. *Nearly uncirculated - uncirculated.* (3)

\$1,200

1617  
Queen Victoria, 1899 Sydney; Edward VII, 1904 Melbourne; George V, 1918 Perth. *Uncirculated; very fine; extremely fine.* (3)

\$1,100

1618  
Queen Victoria, 1900 Melbourne, Perth and Sydney. *In Perth Mint case with certificate No 072, very fine - extremely fine.* (3)

\$1,100



1619\*  
Queen Victoria, 1900 and 1901 Perth. *Uncirculated; nearly uncirculated.* (2)

\$900



part

1620\*  
Queen Victoria, 1900 and 1901 Perth. *Extremely fine; good extremely fine.* (2)

\$800

1621  
Queen Victoria, 1900; Edward VII, 1908-10 Perth. *Very fine - extremely fine.* (4)

\$1,500

1622  
Queen Victoria, 1900 Sydney; George V, 1912 and 1914 Sydney. *Good very fine; brilliant uncirculated; nearly uncirculated.* (3)

\$1,100

1623  
Edward VII, 1902, 1903, 1907 and 1908 Melbourne. *The last very fine, others extremely fine or better.* (4)

\$1,500

1624  
Edward VII, 1902, 1905, 1907, 1908 and 1910 Perth. *Very fine - good extremely fine.* (5)

\$1,850



part

1625\*  
Edward VII, 1902-1910 Perth. *Good extremely fine - uncirculated.* (9)

\$3,300

1626  
Edward VII, 1902, 1903, 1905-8, 1910 Perth. *Nearly extremely fine - good extremely fine.* (7)

\$2,600



part

1627\*  
Edward VII, 1902-8, 1910 Perth. *Extremely fine - uncirculated.* (8)

\$3,000

1628  
Edward VII, 1902-1910 Sydney. *Extremely fine - nearly uncirculated.* (9)

\$3,200

1629  
Edward VII, 1902, 1904, 1906-1910 Sydney. *Very fine - extremely fine.* (7)

\$2,500

1630  
Edward VII, 1902-1904, 1906-1910 Sydney. *Very fine - good extremely fine.* (8)

\$2,900

1631  
**Edward VII**, 1902, 1904 (4), 1906 (2) and 1909 Sydney.  
*Fine - good very fine.* (8)  
 \$2,800



1632  
**Edward VII**, 1903 Melbourne, 1907 Perth, 1904 and 1908 London.  
*Nearly extremely fine - extremely fine.* (4)  
 \$1,500



1633  
**Edward VII**, 1903-05, 1906 (2), 1909, 1910 Melbourne.  
*Very fine - good extremely fine.* (7)  
 \$2,600

1640\*  
**Edward VII**, 1907 and 1909 Melbourne. *Uncirculated.* (2)  
 \$800

1634  
**Edward VII**, 1903, 1907, 1908 and 1910 Sydney. *Good very fine - nearly uncirculated.* (4)  
 \$1,500

1641  
**Edward VII**, 1907 Melbourne; **George V**, 1912 Sydney; small head, 1931 Perth. *Choice uncirculated.* (3)  
 \$1,200

1635  
**Edward VII**, 1904 and 1906 Melbourne, 1906 Sydney. *Fine - very fine.* (3)  
 \$1,100

Private purchase from Monetarium in 1988.

1636  
**Edward VII**, 1904 Sydney. *Nearly very fine.*  
 \$350

1642  
**Edward VII**, 1907, 1909 and 1910 Melbourne, 1906 Perth.  
*Fine - nearly extremely fine.* (4)  
 \$1,500



1637\*  
**Edward VII**, 1904 and 1905 Sydney. *Extremely fine; good extremely fine.* (2)  
 \$800

1643\*  
**Edward VII**, 1907 and 1908 Sydney. *Choice uncirculated.* (2)  
 \$800



part

1638\*  
**Edward VII**, 1905 and 1907 Melbourne. *Uncirculated.* (2)  
 \$800

1644\*  
**Edward VII**, 1908 Melbourne. *Uncirculated.*  
 \$400  
 Private purchase from Monetarium in 1992.



1639  
**Edward VII - George V**, 1906, 1909, 1913, 1914, 1919 and 1931 Perth; 1911 Melbourne. *Good extremely fine - uncirculated.* (7)  
 \$2,500

1645  
**Edward VII**, 1908 Perth; **George V**, 1915 Sydney. *Nearly uncirculated.* (2)  
 \$750



part

1646\*  
Edward VII, 1909 and 1910 Sydney. *Uncirculated; nearly uncirculated.* (2)  
\$800

1647  
Edward VII, 1910 Perth. *Very fine - extremely fine.* (5)  
\$1,850

1648  
George V, 1911 (2) and 1925 Melbourne. *Nearly uncirculated - uncirculated.* (3)  
\$1,150



part

1649\*  
George V, 1911, 1913, 1914, 1915, 1918 and 1925 Melbourne. *Good extremely fine - uncirculated.* (6)  
\$2,250

1650  
George V, 1911 Perth. *Extremely fine.*  
\$370



part

1651\*  
George V, 1911-1919 Perth. *Uncirculated - choice uncirculated.* (9)  
\$3,400



part

1652\*  
George V, 1911 Sydney. *Choice uncirculated.* (2)  
\$800

1653  
George V, 1911, 1913, 1914 Sydney. *Uncirculated.* (3)  
\$1,150



part

1654\*  
George V, 1911-1915 Sydney. *Uncirculated - choice uncirculated.* (5)  
\$2,000

1655  
George V, 1912 Perth. *Nearly uncirculated.*  
\$370

1656  
George V, 1912, 1914, 1917, 1918, 1919 and 1920 Perth. *Uncirculated.* (6)  
\$2,250



part

1657\*  
George V, 1912, 1914, 1915, 1917-20, 1923 Perth. *Uncirculated - choice uncirculated.* (8)  
\$3,000

1658  
George V, 1912 (2), 1917 (2), 1918, 1919 (2) and 1920 Perth. *Very fine - uncirculated.* (8)  
\$3,000

1659  
**George V, 1912 and 1913 (2) Sydney. Nearly uncirculated.**  
 (3) \$1,150



part

1660\*  
**George V, 1914 Perth. Well struck, choice uncirculated.**  
 (7) \$2,800

1661  
**George V, 1914 Perth and 1915 Melbourne. Uncirculated.**  
 (2) \$750

1662  
**George V, 1915 Sydney. Uncirculated. (2)**  
 \$750

In a Monetarium holder, No 00102.

1663  
**George V, 1915 Sydney and half sovereign, 1915 Sydney.**  
*Uncirculated. (2)* \$550

Both from M.R.Roberts, Bank of Albania Hoard.



part

1664\*  
**George V, 1916 and 1918 Sydney. Nearly uncirculated;**  
*uncirculated. (2)* \$800

1665  
**George V, 1918 Perth. In Perth Mint St George sovereign**  
*case, uncirculated.* \$400



part

1666\*  
**George V, 1920-1923 Perth. Uncirculated. (4)**  
 \$1,500



1667\*  
**George V, 1927 Perth. Hairline on obverse, otherwise**  
*uncirculated and scarce.* \$750



1668\*  
**George V, small head, 1930 Perth. Nearly uncirculated.**  
 \$400

1669  
**Australia, George V, small head, 1930 Perth. Edge nick and**  
*some scuff marks, otherwise very fine.* \$350

Ex John Hustone Collection.

1670  
**George V, small head, 1930 and 1931 Perth. Nearly**  
*extremely fine; nearly uncirculated. (2)* \$800



1671\*  
**George V, 1931 Perth. Choice uncirculated.**  
 \$400

Private purchase from Monetarium in 1992.

1672  
**Queen Victoria - George V, Australia's Prestige Gold**  
**Sovereign Collection, shield reverse, 1883 Sydney, St**  
**George, 1880 Melbourne, 1890, 1899, 1907 Sydney, 1917**  
**Melbourne and 1931 Perth. In case of issue with certificate,**  
*very fine - nearly uncirculated. (7)* \$2,700

**IMPERIAL HALF SOVEREIGNS**

1673  
**Queen Victoria, 1872, 1879 and 1881 Sydney. Good - very**  
*good. (3)* \$500



1674\*  
Queen Victoria, 1875 Sydney. *Nearly fine.*  
\$200

1675  
Queen Victoria, 1879 Sydney. *Very good.*  
\$200

1676  
Queen Victoria, young head, 1887 Sydney. *Very good.*  
\$200

1677  
Queen Victoria, 1887 (young head), 1889 and 1897 (2)  
Sydney. *Very good - good fine.* (4)  
\$700



1678\*  
Queen Victoria, Jubilee head, 1887 Sydney (McD.32a).  
*Nearly extremely fine.*  
\$450

1679  
Queen Victoria, old head, 1893 and 1900 Sydney. *Bent,*  
*nearly very fine; good very fine.* (2)  
\$350

1680  
Queen Victoria, old head, 1893, 1897 and 1900 Sydney;  
1896 Melbourne. *Fine - very fine.* (4)  
\$700

1681  
Queen Victoria, old head, 1893, 1897 (3) and 1900 Sydney;  
1896 Melbourne. *Very good - good fine.* (6)  
\$1,000



1682\*  
Queen Victoria, 1897 Sydney. *Good extremely fine/nearly*  
*uncirculated.*  
\$450



1683\*  
Queen Victoria, 1900 Melbourne. *Flat on high points,*  
*otherwise extremely fine or better.*  
\$800

1684  
Queen Victoria, 1900 Melbourne. *Nearly fine/fine.*  
\$180

1685  
Queen Victoria, 1900 Melbourne, Sydney and Perth. *Very*  
*good - good fine.* (3)  
\$500



1686\*  
Queen Victoria, 1900 Sydney. *Mintmark nearly filled in or*  
*flattened, subdued original mint bloom, uncirculated and*  
*scarce thus.*  
\$1,000



1687\*  
Queen Victoria, 1900 Sydney. *Subdued mint bloom,*  
*uncirculated.*  
\$1,000

1688  
Edward VII, 1902 and 1906 Sydney. *Nearly very fine.* (2)  
\$400

1689  
Edward VII, 1903 Sydney and 1908 Melbourne. *Good very*  
*fine; damaged very fine.* (2)  
\$370

Ex Ray Kaleda Collection.



part

1690\*  
Edward VII, 1903, 1906, 1908 Sydney, 1908 Melbourne.  
*Very fine - good very fine.* (4)

\$800

1691  
Edward VII, 1903 (3), 1906, 1908 (5) Sydney; 1908  
Melbourne (3). *Very good - good very fine.* (12)

\$2,100



part

1692\*  
Edward VII, 1906 Melbourne. *Good fine; very fine.* (2)

\$400

1693  
Edward VII, 1906 and 1908 Melbourne. *Good fine; very  
fine.* (2)

\$450

1694  
Edward VII, 1908 Melbourne. *Nearly very fine.* (3)

\$520

1695  
Edward VII, 1908 Melbourne (2) and Sydney, 1910 Sydney.  
*The last extremely fine, others good fine - very fine.* (3)

\$700



part

1696\*  
Edward VII, 1908 Sydney. *First scratched behind head on  
obverse, otherwise both extremely fine.* (2)

\$450

1697  
Edward VII, 1908 and 1910 Sydney. *Very fine.* (2)

\$400



part

1698\*  
Edward VII, 1908 Sydney; George V, 1915 Sydney. *Good  
extremely fine; extremely fine.* (2)

\$400



1699\*  
Edward VII, 1910 Sydney. *Extremely fine.*

\$250

1700  
George V, 1911 Sydney. *Very fine.*

\$170

1701  
George V, 1911 Sydney. *Very fine.* (2)

\$350

1702  
George V, 1911 and 1912 Sydney. *Good very fine.* (2)

\$370

1703  
George V, 1912 Sydney. *Good extremely fine.* (2)

\$370

1704  
George V, 1912, 1914, 1915 Sydney (3, one a light weight  
forgery). *Very fine - good extremely fine.* (5)

\$850

1705  
George V, 1914 Sydney. *Nearly extremely fine.* (2)

\$370

1706  
George V, 1914 (2) and 1915 Sydney. *The last good very  
fine, others nearly uncirculated.* (3)

\$550

1707  
George V, 1915 Sydney. *Uncirculated.*

\$180

1708  
George V, 1915 Sydney. *Good extremely fine - nearly  
uncirculated, one with neck flaws.* (3)

\$600

1709  
George V, 1915 Sydney. *Extremely fine or better.* (3)

\$550

1710  
George V, 1916 Sydney. *Red toned, nearly extremely fine.*  
(2)

\$400