

STAMPS



1376*
New South Wales, 1852 1d carmine, on medium bluish medium wove paper, as a RH corner strip of 4 with fine margins, brilliant colour, includes the variety 'WALE' for 'WALES' error, (SG 45, cf.44c); together with an accompanying letter from the Inspector of Stamps to the Governor and reply where he approves this issue of stamps. *Mint, unused without gum, probable expert treatment to remove foxing of paper.*

\$4,000

Ex Stanley Gibbons, London, March 19, 1976, with their description, the lot also includes a Royal Philatelic Society, London Expert Committee certificate, No.47,899 stating that it is genuine, dated 1 April 1959.



part

1377*
New South Wales, an extensive collection of 'diadems' housed on loose leaves, stored in a green spring-back album, 1d orange-vermillion 1856 and shades, imperforate (SG 107-109), joined pairs (7, including an unused pair), a trio, singles (22) and a another on cover De 8, 1859; perforated 12, 1d orange red 1860 (SG 130-131) and shades, a block of 4 (dated Sp 14, 1860), 6 joined pairs and 17 singles; perforated 13, scarlet and shades, 11 singles and a cover No 29, 1862; worn plate issues 1d pale red, a pair on cover dated 5 Jan 1862, another pair and 4 singles; 2d imperforated a vertical strip of Die II strip of 3 (pm NSW) but originally use was for Queensland; a single recess issue with a certificate from the RPS London, Dec 22, 1950 (not a lithograph); 1860 perforation 12 and shades, strip of 3, 3 pairs and 46 singles, many others with described retouches; 3d green and shades, perforation 12, 1860 issue, joined pairs (2) one with reversed 3 watermark, singles (25); 1872 issue watermark 6, joined pair, 7 singles and a cover to NZ dated 28 Jan 1874; perforation varieties various shades some watermark 10, joined pair, singles (23), assorted issues to 1908 mint/unused pairs (5) and blocks of 4 (12), singles (6), used block of 4, strip of 4, a trio, pairs (4) and singles (3), one dated 2/8/12; watermark 10 unused/mint, block of 4, a pair and 4 singles; 5d green 1860, mint with certificate RPS London, 23 July 1957, various printings and perforations used (40) and mint (4) joined pairs, mint blocks of 4 (2), mint block of 6 and mint singles (15); 1855 imperforate issue corner unit (SG 88) fine used (illustrated), others imperforate mint (2) and a joined pair mint (illustrated) possibly later proofs; 6d used fawn - various colours from 1860 singles (36); 8d from 1860, perforated 12, used (2, one with RPS London certificate 8 Mar 1946), (SG 150); others from 1862 various colours and shades (19) and a joined pair, some interesting perf. and watermarked varieties; 1/- carmine and shades, used joined pairs (7), strip of 4 and another strip of 3, and used singles (17), and other items. An extraordinary accumulation described by a collector over 50-60 years ago. *Mint and used, some rare.* (100s)

\$2,000



part

1378*

New South Wales, Government Railways, Official issues, 1891-1915, 2d (2, one faded), 4d, 5d (faded), 6d (3, shades) & 1/- between #1503 & #1508, some variation in the "OS" Overprint, condition variable, very scarce, (8); another 1891-1915 6d red with OS overprint inverted, a few pulled perfs at lower-left, boxed '211', the cancel of Bourke, rare (illustrated); together with a selection of decimal Government Railways stamps with large OS overprint type II for 1,2,3,5,7 and 40 cents, type III with 1,10, 20 and 50 cents; type IV with large serifs OS overprint for 1,2,3,5,8,10 (2),20, 30, 40, 50 cents and 1 dollar. *Used.* (31)

\$250

Ex Prestige Auction of 1/12/2007, lot 370 (realised \$125) being the first group of 8 and also 371 (realised \$240) the illustrated item.

1379

Queensland, a group of Post Office postcards with red words 'Queensland, Commonwealth of Australia' in two lines from various country towns, many as advertisement cards on the reverse, all c.1911-1914. *Fine, used.* (28)

\$100

Ex Charles Leski Auctions Sale 224 (lot 210).



1380*

South Australia, 1886-96 'POSTAGE & REVENUE' Perf 11<-12< £10 bronze (SG 206b), mss cancel removed, regummed, with a Royal Philatelic Certificate (1993). *Fine*

\$300

Ex Ed Williams, where it was sold for \$420 in Prestige Auction of 12/6/2010, lot 513.

Prestige comment was this is an attractive "unused" spacefiller, most cleaned fiscals have had faked cancels added.



1381*

South Australia, "POSTAGE" 9d rosy lake, block of 20 (4x5) all perforated "SA" (SG 286) several rows with multiple "SA" others with singles. *Mint, lightly toned.* (20)

\$150



1382*

Victoria, 1854 (June), lithographed by J.S. Campbell, 3d 'half length' blue, retouched under C of Victoria as a joined vertical pair SG 24, 24a, retouch from position 17, normal from position 23, imperf., (CV £188), with butterfly cancels, with very good margins. *Fine used, very scarce as a pair.* (2)

\$250

Ex C.R. Deane Collection, ex Status 29.8.2013 for \$559 and previously from the Perry Collection,

Includes a Rodney A. Perry certificate of Opinion dated 1/8/2006, No. 185221.

1383

Western Australia, a collection of issues with much duplication, issues from 1863, multiples of issues from 1885, includes a few Commonwealth issues with W/A perforations and a range of Postal Fiscal stamps mostly 1d issues, and a few 3d and a 6d. *A few mint, mostly used.* (approx 200)

\$100

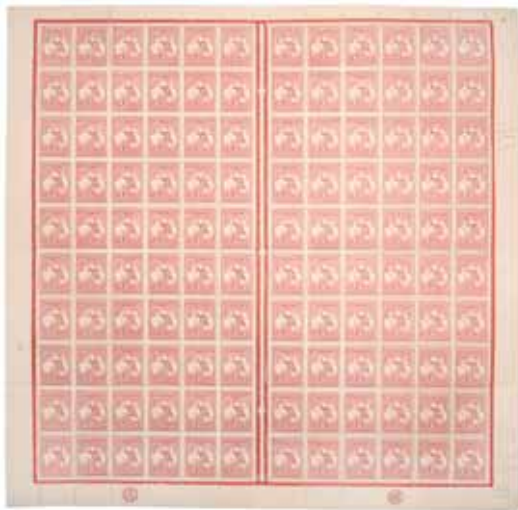
Ex Tasmanian Stamp Auctions (lot 618).

1384

Australian States, perfin, New South Wales 4 x 1d shield, 11 x 2d QV (including a block of 6) and 3d green all perf. OS/NSW (type A); 1/2d to 4d (11 stamps, 4 diff. values) all perf OS (type B); OS/NSW type B on 49 x 1d shield, 4 x 2 1/2d QV, 15 x 4d Cook, 4 x 5d laureate, 3 x 8d lyre and 5 x 1/- roo, 4 x 1/2d green QV, 24 x 2d QV, 10 x 3d green, 11 x 6d orange; South Australia 15 long Toms 3 different values to 1/- all perf "SA", 9d Long Tom perf. "OS" and 1d QV "OS"; 10 x 1/2d GPO, 16 x 1d, 18 x 2d, 1 x 5d all perf "SA"; Tasmania, perf "T" on pictorials 25 x 1d, 19 x 2d, 3d, 5 x 4d, 5d and 2 x 1/2d tablets; perf "OS" on pictorials, 4 x 1d, 3 x 2d, and 1/2d, 4d, 6d; Victoria, perf "OS" on 7 x 1/2d, 150 x 1d, 50 x 2d, 17 x 3d, 2 x 1 1/2d, 7 x 4d, 5 x 5d, 7 x 6d, 3 x 9d, 4 x 1/-, 2 x 2/- and a 2 1/2d; perfin on Great Britain, KGVI perf. "NZ" (13 with 9 holes), QEII perf "NZ" (11 x 8 holes); Australia, 1981 \$2 wallaby track used vertical pair perforated "VG" 4th head posn E. top stamp punched twice. *Range of postmarks an interesting collection of perfin, used, some scarce.* (lot)

\$200

Lot includes invoice and lot numbers of the detailed description.



1385*

Australia, 1d red, kangaroo, 1st watermark, complete sheet of 120 stamps from Plate H, perforated small OS. *MUH.* (120)

\$1,500

A condition report is enclosed. A second sheet, very clean with a couple of tone spots on the gum side near the top of the sheet. Unhinged, some separations on the selvedge only at the bottom. A few pencil annotations on the right hand selvedge. Includes CA monogram corner strip of 3 and JBC monogram strip of 3. Further comments on varieties and rarity are appended to the condition report.



part

1386*

Australia, 1d kangaroo, 1st watermark, red, die I large OS perforation, 2 (two) perforation blocks of 6 (six) as corner blocks with CA and JBC monograms on base, together with a base selvedge on a die II large OS perforation block of 4, (SG O2, O2d, cf. ACSC 2(C)z, and 2(C)zb, 3ba). *MUH with some minor gum toning.* (16)

\$2,000



part

1387*

Australia, 1d kangaroo, 1st watermark, red, die I large OS perforation block of 4 and die II small OS perforation block of 4, (SG O2, O17d, ACSC 2ba, 3bb). *MUH, large OS one stamp with attached paper and stain.* (8)

\$100



1390*

Australia, 6d kangaroo, 1st watermark, ultramarine, a block of 4, from Die II, (SG 9, ACSC 17A). *MUH.* (4)

\$600



part

1388*

Australia, 4d kangaroo, 1st watermark, orange, a horizontal joined pair (illustrated), and two singles both lightly hinged and minor edge tone, (SG 6, ACSC 15A). *MUH, two mint.* (4)

\$150



1391*

Australia, 10/- kangaroo, 1st watermark, grey and pink, variety broken tail ACSC 47(V)e, (SG 14, ACSC 47A). *Mint hinged with deep colours and good margins.*

\$600

With a certificate from Briefmarkenprüfstelle, Basel, Switzerland, Nr. 47d-1 of 21 June 2003.



1392*

Australia, £1 kangaroo, 1st Wmk., brown and ultramarine, SG 15 (CV £2,000). *Used, postmarked Queensland.*

\$350

Ex C.R. Deane Collection.



part

1389*

Australia, 5d kangaroo, 1st watermark, chestnut, large OS perforation, a block of 4, from Die II, and a normal single, (SG 8, O7, ACSC 16A, 16ba). *Mint, regumed, single has a light crease.* (5)

\$400



1393*

Australia, £2 kangaroo, 1st watermark, black and rose (SG 16, ACSC 55A). *Mint, hinged with deep colours.*

\$10,000



1395*

Australia, £2 kangaroo, 1st Wmk., black and rose, SG 16 (CV £3,000). *Fine used, as a CTO, postmarked Melbourne.*

\$900

Ex C.R. Deane Collection.



part

1396*

Australia, 9d kangaroo, 2nd watermark, violet, 3 (three) singles, one with RH side selvedge (illustrated), from Die II, (SG 27, ACSC 25A). *MUH, one single off centred perforation.* (3)

\$600



1397*

Australia, 2/- kangaroo, 2nd watermark, light brown, (SG 29, ACSC 36A). *MUH with good colour, well centred.*

\$1,000



1394*

Australia, £2 kangaroo, 1st watermark, black and rose, broken tail variety (SG 16, ACSC 55[V]e). *Mint, hinged with deep colours.*

\$12,000

With two certificates, one from Peter Holcombe, Luzern, Switzerland, No. 9140/94 April 20th 1994 and another from Briefmarkenprüfstelle, Basle, Switzerland, Nr. 55d-1 of 18 June 2003 (both illustrated).

1398*

Australia, 2/- brown kangaroo, 2nd watermark, (Die II), SG 29. *Mint, with light hinge remain.*

\$200



1399*

Australia, 2 1/2d kangaroo, 3rd watermark, indigo and other shades, small OS perforations, 2 (two) blocks of 4 (one illustrated), and one single with RH side selvedge, (SG O44, ACSC 11b). *MUH.* (9)

\$400



1400*

Australia, 2 1/2d kangaroo, 3rd watermark, blue-indigo, a large upper LH corner block of 16, (SG 36, ACSC 11A). *MUH.* (16)

\$300



part

1401*

Australia, 3d kangaroo, 3rd watermark, olive, a block of 6 with LH side selvedge (illustrated), and two singles, one from Die I lightly hinged, other Die IIB pale olive green, (SG 37, 37e, ACSC 13E, 14D). *MUH, both singles mint. hinged.* (8)

\$200



1402*

Australia, 1/- kangaroo, 3rd watermark, die IIB ('Harrison' Plates), blue green, OS perforation as 2 (two) blocks of 8, one with LH side selvedge, the other with upper LH corner selvedge (SG O48b, ACSC 33ba). *MUH*. (16)

\$800



1403*

Australia, 1/- kangaroo, 3rd watermark, blue green, watermarked sideways, (SG 40ba, ACSC 33aa). *MUH with gum lightly toned*.

\$100



1404*

Australia, 2/- kangaroo, 3rd watermark, maroon, (SG 74, ACSC 38A). *MUH with good colour, gum tone*.

\$100



1405*

Australia, 5/- kangaroo, 3rd watermark, grey and chrome, (SG 42, ACSC 44A). *MUH, minor gum disturbance with good colour, well centred*.

\$300



1406*

Australia, 5/- kangaroo, 3rd watermark, grey and yellow, (SG 42, ACSC 44C). *Mint with good colour, well centred*.

\$350



1407*

Australia, 5/- kangaroo, 3rd watermark, grey and yellow, (Die II), SG 42. *Mint, with light hinge remain*.

\$150



1408*

Australia, 10/- kangaroo, 3rd watermark, block of 4 with RH selvedge, grey and pink, (SG 43, ACSC 48A). *MUH with good colours and strips of two tone gum patination*. (4)

\$3,000



1409*
Australia, 10/- kangaroo, 3rd watermark, grey and pink, (Die II), SG 43. *MUH with side selvege attached.*
 \$500



1413*
Australia, £1 kangaroo, 3rd watermark, grey (SG 75). *Used.*
 \$100



1410*
Australia, 10/- kangaroo, 3rd watermark, grey and pink, perforated OS/NSW, (SG 43, ACSC 48A). *MUH with good colours and well centred.*
 \$700



1414*
Australia, £2 kangaroo, 3rd watermark, purple black and rose (SG 45b, ACSC 56C). *Very fine used.*
 \$1,500



1411*
Australia, £1 kangaroo, 3rd watermark, chocolate and dull blue (SG 44, ACSC 52A). *Regumed, mint hinged with good colour.*
 \$2,000



1415*
Australia, £2 kangaroo, 3rd Wmk., black and rose, SG 45 (CV £2,250). *Used.*
 \$750

Ex C.R. Deane Collection.



1412*
Australia, £1 kangaroo, 3rd watermark, chocolate and dull blue (SG 44). *Used with telegraph usage and two pinholes.*
 \$100



1416*
Australia, specimens of the £1 kangaroo, 3rd watermark, chocolate and dull blue as a joined vertical pair (SG 44s, ACSC 52Ax). *MUH with several short perfs, good colour and rare as a joined pair.*
 \$2,000



part

1417

Australia, 6d kangaroo, small multiple watermark, chestnut, a lower strip of 3 with selvedge at base, a block of 4 (four); 2 (two) Ash imprint pairs of stamps (N over A) and a single stamp; together with a gutter block of 6 (six) stamps perforated OS (illustrated), and a single perforated OS, (SG 107, O114, ACSC 22A, 22b). *MUH*. (17)

\$250



1418*

Australia, 10/- kangaroo, small multiple watermark, grey and pale pink, (SG 112, ACSC 49). *MUH with good colour, well centred, with selvedge attached to lower edge.*

\$750



1419*

Australia, 10/- kangaroo, small multiple watermark, grey and pink, joined horizontal pair, variety weak ear and tail on the RH stamp, (SG 112, ACSC 49). *MUH with good colour, reasonably well centred.* (2)

\$1,500



1420*

Australia, £2 kangaroo, small multiple watermark, black and rose (SG 114, ACSC 57A). *Fine used, one short perf.*

\$200

1421

Australia, 2/- kangaroo, C of A watermark, maroon, 2 (two) blocks of 4 one with LHS selvedge, other with top selvedge, and one single, together with 2 (two) imprint blocks of 4 (four) by John Ash, N/A, N/N one of each (SG 134, ACSC 40A, 40(1)z and 40(2)z). *MUH, one stamp is mint, all with good colour.* (17)

\$250



1422*

Australia, 5/- kangaroo, C of A watermark, grey and yellow-orange (SG 35, ACSC 46A). *MUH, with good colour, a corner piece with selvedge.*

\$450



1423*

Australia, 10/- kangaroo, C of A watermark, grey and pink, (SG 136), one (illustrated). *Fine off centred, used.* (2)

\$100



1424*

Australia, £1 kangaroo, C of A watermark, grey (SG 137). *Fine used.*

\$100



1425*

Australia, £2 kangaroo, C of A watermark, black and rose an imprint pair by John Ash, (SG 138, ACSC 58A). *Mint hinged with original gum, good perfs and deep colours.*

\$8,000

ACSC claim that there are only 30 imprint pairs extant.



1428*

Australia, specimen set of 10/- to £2 kangaroos C of A watermark, (SG 136s-138s). *MUH.* (3)

\$120

1429

Australia, KGV 1d red, die 2, rough paper, disturbed gum (stuck to Hagner), SG 21d; kangaroo, 1/- 2nd wmk., SG 28. *Mint.* (2)

\$100

Ex Wing Comdr. John Burley from the Rod A. Perry Auction Galleries Auction Sale 85 (18th December 1980) lot 185 and 245 (Paid \$90 + \$420).



1426*

Australia, £2 kangaroo, C of A watermark, black and rose (Die II), SG 138. *MUH, well centred, superb corner piece.*

\$4,000

Item from the Post Office Archive Sale.

1430

Australia, KGV, 1d green, 1924 issue on large multiple watermark study group on two album leaves, (SG 82 and a-d), includes 'Harrison' imprint block with varieties RA joined (SG 82d, ACSC 78(4)j) and ferns (SG 82d, ACSC 78(4)ia) also un a pair, another imprint strip of 4 variety no stop after Printer a horizontal block of 12 (6x2) with variety 'dot before 1' and thin left frame (ACSC 78(3)m and o); another block of 4 with variety 'thin one penny' (ACSC 78(4)l), others with flaw under neck (ACSC 78(4)h), secret mark (ACSC 78(4)d). *MUH, mint.* (39)

\$300

Ex Sydney Stamp Auctions, (lot 282).



1427*

Australia, £2 kangaroo, C of A watermark, black and rose (SG 138, ACSC 58B). *Fine used.*

\$150

1431

Australia, KGV, 1d green, 1924 issue of no watermark study group on three album leaves, (SG 83 and some varieties), includes 'Harrison' imprint block, blocks of 4 (4 two are corner blocks), 6 and 8, also two pairs, and 12 singles, flaws include 'run N flaw, corner dot, neck flaw, roos tongue, secret mark, RA joined, NY joined', etc., (mostly as ACSC various varieties), these (50) all *MUH*, mint, together with a album leaf of used single watermark 1914-1920 issues as colour varieties for 1/2d (3), 1d red (2), 1d green, OS perf, 4d (5), 5d (2). *MUH, mint and used.* (63)

\$200

Ex Sydney Stamp Auctions, (lot 282).

1432

Australia, KGV issues, various including 1d green, John Ash imprint block of 4 CofA watermark, another 1 1/2d brown block of 4 partial imprint block, 2d/1 1/2d O/P imprint blocks (2, one with partial imprint), a range of singles various watermarks, noted small mult. set to 5d mint (8). CofA watermark set to 1/4 mint, 5d CTO; others various watermarks to 5d/4 1/2d. *MUH, mint, one CTO.* (52)

\$100

Ex Dr C.Haymes Collection.



part

1433*

Australia, KGV, a mixed group mostly as blocks, includes 2nd watermark 1d sage-green, block of 4 (SG 76); 1 1/2d green vertical pair, one with variety error PENCF (SG 61), large multiple watermark 1 1/2d black brown (SG 51) lower LH corner unit; small multiple watermark 1d green, block of 4 and 2 pairs (SG 95), C of A watermark 1/2d orange block of 4 (SG 124), 1d green block of 4 (SG 125), 1 1/2d red-brown John Ash imprint block of 4 (SG 126, ACSC 93(1)za) (illustrated), 5d orange brown singles (3). *MUH and mint.* (30)

\$150



part

1434*

Australia, collection on leaves of KGV OS perforated issues, watermark crown/A, 1/2d green (6, including block of 4) (SG O38), 1/2d orange (block of 4) (SG O66); 1d violet (block of 6) (SG O67); 1d red, 1d green, 4d olive yellow, 4d ultramarine, 4d violet (3, including a vertical joined pair), 4 1/2d violet (joined pair); 5d brown, all the above mint, *MUH*; a large accumulation of used perforated OS from 1/2d - 5d, various colours and mostly crown/A watermark (175) a few with faults. some scarce; "T" perfins KGV (34); 3d G/NSW on C of A (52); OS/NSW perforations on Crown/A watermark (28); VG perforated KGV various watermark (34); private perfins (7); oddments (16) on large Hagner sheet as mostly KGV but includes 2d red joined pair KGV with inverted OS perforation and inverted watermark. *Mint, MUH and used.* (lot)

\$200

Ex Status International auction 23rd October 2002 (lot 2800, cost \$550 +)

1435

Australia, KGV issues with OS overprint, C of A, blocks of 4 of 5d, 3d, 1d, 1/2d, small multiple watermark 4d (SG O126); CTO blocks of 4, 3d, 1/2d; singles 6d kangaroo small multiple (2) (SG O127); 2d (1), 4d (2) all small multiple, 1/2d (2), 1d, 3d (3) all CofA watermark. *MUH, mint and CTO.* (39)

\$150

Ex Dr C.Haymes Collection.



part

1436*

Australia, in a small stock book, mint kangaroo denominations set, with extras, 1/2d - 2/- mostly 3rd wmk. noted 3rd wmk 2/- (2) (both illustrated), lot includes a C of A Specimen set of (3) to £2 kangaroo, 3d kookaburra M/S, AIF and Peace sets as imprint blocks and Papua New Guinea 10/- and £1 both Specimens, several with paper tone spots. *Mint, MUH.* (63)

\$200

1437

Australia, assorted KGV and kangaroos perforated as OS and OS/NSW, together with various pre-decimal G/NSW to 1/4, W/A, T and odd company perfin, also a quantity normal postage issues; all housed on Hagner sheets, stamp cards and small paper sheets, also two part envelopes OS perf on KGV, together with New South Wales OS overprints (18), noted OS perf. kangaroos for 5/- 2nd wmk., 2/- (3) and 5/- OS 3rd wmk., 5d small and large OS; together with small grey albums (2) one with mostly decimal perfins the other with an extensive range of KGV including 1d red with shades (160+) values to 1/4. *Used.* (100s)

\$100



1438*

Australia, 1928 Melbourne Exhibition stamp design by Mr. E. N. Broad, London, the submitted design for the 1 1/2d as an original drawing (183x155mm) depicting a kangaroo within the map of Australia highlighting Canberra with wattles above value tablets, and enclosed as "Enbee 1928 No.2". *In black and white ink, as new.*

\$1,000

The National Library of Australia using the Argus newspaper Friday 27 July 1928 comments on this.

"Stamp Design Competition".

Mr. R. A. Harrison (was) first. Three of the first five successful competitors in the stamp design competition conducted by the committee of the International Philatelic Exhibition are Victorians. More than 100 designs were submitted from all parts of Australia, Great Britain, France, India, South Africa, and the United States, and five of the first seven successful competitors were Australians. (The awards were announced yesterday.

Mr. R. A. Harrison, of the Government note printing branch, Fitzroy, obtained the First award—a gold medal. His design embodied the King's head. The second place was taken by Mr. H. Perry, of Venusstreet, Caulfield, with a koala design, for which a silver medal was given. The third award (bronze medals) was shared by Mr. E. N. Broad, 50 Treen avenue, Barnes, England, and Mr. E. M. Horne, Tyne street, Gilberton (S.A.). The design submitted by Mr. Broad was of the King's head, and that submitted by Mr. Horne had as its base the kangaroo. The cockatoo design of Mr. J. Trevor, Nar-nar-goon, was highly commended. The designs of Mr. F. H. Burrell, sixth avenue, Joslin E. Adelaide (kangaroo and wheatfield), and of Mr. H. W. Barr, Nasik road, India (allegorical). Special bronze medals will be awarded to the three last-mentioned competitors. All the successful designs have been sub-mitted to the Postmaster-General's department with a view to possible adoption for use as Australian stamps. Should any design be accepted the author will be granted a premium of £25. It is considered possible that each of the first three or even four designs may be adopted.

Mr. Harrison, the winner, also won the competition conducted in 1926 for the Canberra stamp, and both he and Mr. H. Perry, the second prize winner, are officers of the Government note and stamp printing branch. Mr. Broad is on the staff of a firm of stamp printers in England, and Mr. Barr is the manager of the Indian Government printers. The judges of the competition expressed appreciation of the high average quality of the designs.

The judges were:-Mr. P. T. Berry, Chairman; Mr. James Murray (representing the Postmaster-General), Mr. John Ash (technical representative), Mr. J. S. Macdonald (representing Australian artists) and Mr. A. A. Rosenblum (honorary secretary of the International Philatelic Exhibition). The exhibition will be held at the Town Hall in October and November."

Mr. Broad submitted this design as his second entry in this competition. The owner paid many years ago \$2000 for this drawing.



1439*

Australia, 6d sepia, 1931 Airmail service, overprinted OS as an imprint block of 6, (SG 139a, ACSC 13zd). *Centre stamp mint, others MUH.*

\$150

Ex Rodney Perry Auction 145 (lot 957) at a cost of \$290.



part

1440*

Australia, 5/- bridge, MUH (SG 143) (illustrated); together with 2d as pairs of each variety, and 3d pair. MUH for all except 3d pair with a very light hinge remainder, 5/- with bottom selvedge as part of imprint block. *MUH, mint. (7)*

\$300

Ex Dr C. Haymes Collection, lot includes original invoice for \$391 for this set in May 2015.



part

1441*

Australia, 1932 Opening of Sydney Harbour Bridge, set to 5/-, (5/- illustrated, toned, mint with tiny thin) all with side selvedge attached. *MUH. (4)*

\$250



part

1442*

Australia, 1932 Opening of Sydney Harbour Bridge, 5/- used, together with mostly MUH 1d engraved (3), 1/- South Australia (5), 1/- Mitchell (5), 9d 150 years (2), 1/- Victoria Centenary (2). *MUH, mint and used.* (18)

\$200



1443*

Australia, 1932 5/- Bridge, well-centred 'CTO', (CV \$350). *Fine used.*

\$80



part

1444*

Australia, 1935 Anzac 1/- plate 2, corner piece (illustrated), other Anzac 1/- (2), (2), 2d South Australia, broken mast variety, 2/- 1935 Jubilee (4), 5/- robes (SG 176) MUH, Navigators 10/- (2), £1 (2), decimal \$1 (2), \$2 (2), \$4 (2). *MUH and mint.* (19)

\$150

1445

Australia, various kangaroos some as perfins (including private perfins), mostly as 'OS', 'OS/NSW', together with various groups of Australian perfin issues, also short sets of kangaroos with extras to 1/-, various watermarks, 1d kangaroo block of 4 large OS perf, used, small OS perf set to 2/- 3rd wmk., 5/- bridge private issue perfin; similar for 3rd wmk. 10/- kangaroo, 1d red pair with T perf. with plate B on edge. *Mostly used a few mint.* (100s)

\$200

1446

Australia, kangaroo stamps as perfins, an extraordinary accumulation of issues mostly with counterfeit usage of issues with perforations purporting to be 'OS, VG, T, OS/NSW, W/A', some as varieties reversed letters etc, noted 2 x £2 kangaroos C of A 'VG' mint/MUH, quantities of 5/- and 10/- robes (26), 4 x £1 Robes 'W/A', arms set MUH 'G/NSW' etc. *MUH, mint and used.* (100s)

\$600

1447

Australia, KGV and a some later, stamps as perfins, an extraordinary accumulation of issues mostly with counterfeit usage of issues with perforations purporting to be 'OS, VG, T, OS/NSW', some as varieties reversed letters etc, noted arms, navigators as perfins, a good range of 1d reds, many MUH as perfins 'OS', 1/4 (9) 'OS', 5/- bridge perfin 'VG' some kangaroos £1 blue and brown (2) 'OS', some KGV as NWPI issues as perfins 'OS'; a few Australian State issues as perfins, a few covers, 5/- (6) kangaroos 'OS' mint/MUH, quantities of KGV, 'OS' etc. *MUH, mint and used.* (100s)

\$800

1448

Australia, KGV, KGVI and QEII stamps as perfins, an extraordinary accumulation of issues mostly with counterfeit usage of issues with perforations purporting to be 'OS, VG, T, OS/NSW, W/A', some as varieties reversed letters etc, noted 4 x 5/- bridge 'OS/NSW' navigators to £2 (2) 'G/NSW', 13 x £1 Robes 'G/NSW' 5 x £1 Robes 'T', many robes issues are mint, also other commems from 1930s perforated, noted arms £2 used, not perfins (25) also £1 etc; paintings 'VG' (49) etc. *MUH, mint and used.* (many 100s)

\$800

1449

Australia, various definitive series, zoological series and commemorative issues, 1937-1965, mostly in blocks of four or more, some with imprints, also a strip of 3. *Some with hinge mark and some with lines on gum caused by storage in photo album, but mostly MUH.* (over 90 blocks)

\$100

1450

Australia, pre-decimal MUH issues from 1940 - 1965, a large quantity and accumulation, with many as blocks, much duplication, a few as sheets, noticed birds to 3/- in blocks of 4 some as multiples, 2/- Cobb, some imprints blocks eg 1/3 cow, 2/- art, 2/6 aborigine, 1951 50 years set and many others, sheet of 80 of 5d and 2/3 Anzac, booklet panes; KGVI imprint blocks of portrait to 1/4; coils etc. *Mostly MUH.* (100s)

\$300

Ex Dr C.Haymes Collection.

1451

Australia, pre-decimal mostly MUH on standard approval cards (70), some as imprint blocks, much duplication with values to 2/3, mostly c.1948-1965. *MUH.* (approx 250)

\$80

Ex Harmers, Sydney Auction Sale (lot 532).

1452

Australia, pre-decimal used (some with original invoices), includes 1/4 KGV CofA (15), various others 1/2d - 1/4 (set of 8), arms 10/- (approx 50), £1 arms (approx 50), extras strip of 3 £1, £2 single; high FV pieces of 1940-1950s on pieces, noted 6x5/- cattle on piece, 1913 6d kooka, KGV OS perf. issues and as O/P to 5d, 5/- robes used imprint block; KGV, p.14 small multiple set to 1/4. *Used.* (lot)

\$100

Ex Dr C.Haymes Collection.



part

1453*

Australia, a collection housed in two Stanley Gibbons 'Exeter' blue albums No.2898, as used issues from 1913-1965 for Volume I and a decimal collection from 1966-1982; the pre-decimal includes a good range of kangaroos, noted to 1/- 1st watermark, large issues OS 1d, 4d and 6d, small OS 1/2d, 2d and 2 1/2d, a range of OS/NSW for 1st watermark, engraved 6d kooka, 2nd watermark to 1/-, an extensive range of KGV 2nd watermark with extras by SG number, and (6) OS KGV, 3rd Watermark Kangaroos to 5/- (17), OS perf. to 2/- (11), a good range of other KGV rough paper other watermarks, etc. including OS, G/NSW etc. (140), later kangaroos include C of A watermark £1 and £2 kangaroos (both illustrated); commemoratives appear complete to 1960s and includes 5/- bridge (illustrated), also robes and arms sets; decimal issues used nearly complete, a few others etc. *Used*. (100s)

\$600

Ex Malcolm S. Burrells Collection.

1454

Australia, pre-decimal mostly MUH on standard approval cards (98), some as imprint blocks, much duplication with values to 2/-, mostly c.1928-1957, noted 3d Airmail with plate numbers 1-4 attached to each stamp, 3d kooka (9), 1936 South Australia set., *Mint some MUH*. (approx 350)

\$100

Ex Harmers, Sydney Auction Sale (lot 530) for some of these cards.



part

1455*

Australia, incomplete collection housed in two Stanley Gibbons clip-lock folders fitted with Seven Seas hingeless leaves placed with slip covers, a mixed collection of scattered pre-decimal and decimal issues to 1990, noted 5/- bridge (illustrated) with bottom selvege (mint). *MUH, mint and used*. (100s)

\$300

Ex Matthew Rich Collection.



part

1456*

Australia, nine albums (spring back or stock book) containing pre-decimal and decimal stamps (including some used [in stock book] and a few booklets), decimal (FV approx. \$100), noted FDC cover to navigators to £2 on several covers, MUH pane of 25 Xmas 1971, 1930 KGV O/P's in blocks of 4, 1/6 McCracken imprint block, many 1930s commems. mint and used, robes 5/- imprint block, 1/- Ash imprint block, lyre bird (illustrated), 1942 2 1/2d booklet, etc. *MUH, mint and used*. (100s)

\$250



part

1457*

Australia, Post Office postal cards, George V 1911 facing head design 1d, (1 mint, 2 used) (P1); 1d kangaroo (1 mint, 3 used) (P24); 1d red KGV (1 used, 1 mint) (P27); similar (1 mint, 2 used (one without dot after 1/2d) (P28, P28f); Three halfpence on 1d red (2 mint, 2 used) (P48); another with overprint on obsolete stock (1 used) (P50 CV \$1500) (illustrated). *Mint and used*. (17)

\$700

1458

Australia, Post Office postal cards, George V, 1 1/2d red brown (5 used, 1 mint) (P27); similar 1d violet (1 mint, 3 used) (P56); 1d green (6 mint, 4 addressed, 3 used) (P63); three halfpence on 1d green (1 used) (P66); another with 1d green and fixed with 1/2d orange (1 mint, 1 used); 1 1/2d red brown, short admonition (1 mint, 5 used) (P67); similar long admonition (3 used) (P68) (illustrated). *Mint and used*. (31)

\$200

- 1459
Australia, Post Office postal cards, George VI, 1/2d red brown (2 used, 6 mint) (P70); similar 2d mauve (2 mint, 2 used) (P72); 3d green (1 mint) (P74); QEII, 3d green (2 mint, 2 used) (P75-6); 3d revalued to 4d green (1 used, 1 mint) (P78); several above with additional stamps for value of 4d (3 used); various stamped to order envelopes, from KGV 1d red (ES 14) to QEII values to 20c some with several duplications (62). *Mint and used.* (81)
 \$200
- 1460
Australia, FDCs (approx 90); stamp cards (30) various coins \$5, \$1 (3) in packs medallion set etc.; used stamps off paper, folders unused sheets, etc. *Mint used.* (100s)
 \$100
- 1461
Australia, 2000 Olympics, Australian Gold medallists, offset printed sheets with 18 x joined panes of sheets for the digital technology with platypus corner stamp, with backing sheets were interleaved and sold together that were not intended by the issuing authorities; lot includes the Olympic Games M/S, and single panes as M/S for all medal winners in a separate 20 page display book; together with the Official Spectator Guide to the games. *MUH and offset backing sheets rare as such.* (lot)
 \$500
- Australia Post used world first technology to issue postage stamps of the Australian gold medal winners at the Sydney 2000 Olympic Games.
- By arrangement with SOCOG a digital image taken at the medal presentation ceremony was sent to Fuji Xerox at Mascot, New South Wales where it was combined with a pre-designed frame format under the auspices of an Australia Post official. Once accepted this was then transmitted to Fuji Xerox document printers in Sydney, Melbourne, Brisbane, Adelaide, Perth, and Canberra where a limited quantity of pre-perforated sheets were used to print the 'digital' stamps.
- Black backing sheets were interleaved as part of this production process and as they contained an offset image, were NOT supposed to be issued to collectors. Each state's sheet bore an identifying animal logo at bottom right (NSW is a platypus). Stamps were then despatched to 69 selected post offices throughout Australia for sale from noon the day after.
- The same image was transmitted to SNP Ausprint in Melbourne where similar sheets (with a different identifying logo) were printed for normal distribution and available on the second day after production.
- These sheets were purchased at the Olymphilex stamp & collectibles exhibition post office at Centrepoin in Sydney and the appropriate sport pictogram postmark applied once to each sheet. (Richard Peck 2002)
- 1462
Australia, collection of Post Office Packs, first day covers, and first day of issue covers, mostly 1970s-1990s, also a large number of Great Britain Post Office Packs and first day covers as well as some covers from New Zealand and the Pacific Islands and some posted envelopes. *Used - MUH.* (100s)
 \$300
- 1463
Australia, Post Office packs c.1970-2000, (approx 300). *MUH.* (approx 300)
 \$150
- 1464
Australia, Australia Post, booklets, c.late 1990-2010, (FV \$522). *MUH.* (approx 50)
 \$250
- 1465
Australia, in a large cardboard box, various collection in two clip lock albums and a large stockbook, albums with Australia part collections either mint or used, together with post office packs and post office books on special issues, noted Navigators Specimen set, Xmas 1971 pack, MUH Xmas sheet of 25 stamps; an accumulation of hingeless decimal Seven Seas leaves with MUH decimal to 1970s including navigators set etc; quantities of FDC, and other covers, a large used Lighthouse stockbook with quantities of mint and used world, including St. Vincent, Southern Rhodesia including 1947 1d Royal Visit sheet of 60, Grenada mint sheet QEII, Royal visit 1947 sets, South Africa used duplicates, GB lots from KGV-QEII, Canada MUH and used, 1937 Coronation sets, France used, Australia KGV used, Malta, Ceylon, lots of other British Commonwealth, Orange Free State (22), South West Africa multiple sets and blocks, A collection of stamps of Space Exploration in a New Age Stamp Album, etc, some useful pickings throughout. *MUH, mint and used.* (100s)
 \$300
- Ex Dr C.Haymes Collection.
- 1466
Australia, Australia Post year books 1981-2003, together with (2) sets in slipcase of Australian Bicentennial Collection (5 folders in slipcase). *MUH.* (25)
 \$400
- 1467
Australia, Australia Post year books 1981-2005, 2007. *MUH.* (26)
 \$400
- 1468
Australia, Australia Post Yearbooks, assorted years from 1982 (21), theme sets (8), 1976 Olympics album (few stamps), World Wildlife covers collection in album 1976, Silver Jubilee 1977 Collection in album; FDC's for cities (unopened as mailed), all in two heavy cartons. *MUH.* (100s)
 \$400
- 1469
Australia, Post Office year books 1983-1985, 1987, 1989-1901, 1903-2004, together with the Australian Bicentennial Collection folder with three booklets, the 2000 Olympic Games M/S set of 10, with gold medal winners in folder; all in two containers, together with some used Australia and world, MUH sheets from selected foreign countries etc. *MUH.* (lot)
 \$400
- 1470
Australia, Australian Post Year Books, 1985-1987, 1990. *MUH.* (4)
 \$60
- 1471
Australia, Australia Post year books (8), 2001, 2002, 2004 (2), 2005-2008, together with approx \$150 - \$200 FV of stamps on sheets and loose all c.1990s, together with approx 100+ FDCs c.2000s. *MUH, used.* (lot)
 \$250

1472
Australia, MUH decimal, mostly as sheets of stamps in the 30s-40s cent range, (FV \$1095+). *MUH*. (100s)
\$400

1473
Australia, MUH australian decimal mostly in sheets or part sheets with values to \$10 but strong on the 18c, 20c and 22c issues, some stored in two old stock books, (total FV \$680). *MUH*.
\$300

1474
Australia, mint sheet folder of MUH decimal values from 1c to \$1, mostly as full sheets, includes some AAT types c1970-1980s, (FV \$700). *MUH*. (100s)
\$300

1475
Australia, c1980-1996, assorted sheets and part sheets, 1c, 5c, 18c to 60c, FV \$500. *MUH*.
\$250

1476
Australia, 1982-2017, assorted sheets and part sheets, 22c, 27c, 60c, 65c, 75c, together with stamp packs (15) includes Justice League (2), Star Wars, Ford Australian Classics (2), Disney (2), FV \$440. *MUH*.
\$220

1477
Australia, assorted decimal MUH, recent issues with values to \$10, mostly recent issues, (FV \$425+). *MUH*. (lot)
\$160

Ex Dr C.Haymes Collection.

1478
Australia, stock book of Chinese manufacture with MUH decimal with most values from 18c - 45c, many in sheet form, total FV (\$256+). *MUH*. (100s)
\$120

Ex Monsignor Wayne Peters Collection.

1479
Australia, decimal, lighthouse album with of blocks (1978), Australia Post Yearbooks (17), two albums with mini sheets 1970 on, also Norfolk Island and Solomon Islands, all in large cartons. *Used, CTO, MUH*. (100s)
\$350

1480
Australia, decimal and pre-decimal in three albums, a used mixed collection in a Seven-Seas simplified stamp album, noted mint Specimen set of arms, most commems (no 5/- bridge) etc., a stock book of blocks etc of AAT, Australian pre-decimal and early decimal, another stock book with used and some 1950s New Zealand singles and block, quantities of decimal mostly as blocks stored in glassine envelopes, a few post office packs including 1971 Xmas pack; additional stock books of world stamps and others in packets, covers also noted China, Chinese stamps of the Yangtze Three Gorges book with stamps, old catalogues etc. *MUH, mint and used*. (100s)
\$150

1481
Australia, and several other countries stored in eleven (11) cliplock albums on Seven Seas album leaves, including one album Australia 1913-1990 mostly used, another album with mostly MUH, some used 1990-2003, another mostly MUH 2004-2011 and another MUH 2012-2015 these both incomplete but good representation of issues of this period, AAT album with MUH from, 2006-2014, some earlier mint and used; albums of Christmas Island incomplete to 2014, another album of Cocos (Keeling) Islands incomplete to 2014 Great Britain mostly QEII used, and group of Norfolk Island part sets on leaves; another album of New Zealand with MUH issues from 1991-1997; lot also includes Australia Post year book 1994, 2005, special publications White Ensign (2), Australians under fire, booklets with stamps, Pastoral Era, Rush for Gold, Boomtime and First Australians. *MUH, mint and used*. (100s)
\$250

1482
Australia, Australian Antarctic Territory (AAT) stamp collection, housed in clip-lock folder mounted on Seven Seas hingeless leaves, 1957-1992 with extras on Hagner sheets, FDC covers from bases of 1980 etc (36). *Most appear to be MUH, some used*. (lot)
\$80



part

1483*
Africa, selected stamps on sheets and Hagner cards from Sierra Leone including 6d lilac (SG4), 2/- and 5/- QV (SG 51, 52, CV £120), 5/- EVII, etc; British Bechuanaland, sets and part sets from QV various as O/P on GB stamps mint and used, short sets of KGV - 1966; Swaziland, KGVI short set and set to £1, Independence set 1968 to 2r etc; Gambia, various sets QV to 1/- with duplication, KGV short sets, KGVI set to 4/- etc; British East Africa Company issues including 2,3 and 4 rupees; British Somaliland QV O/P 12 annas, 1 rupee, Kenya Uganda Tanganyika, various including 1938 10/- (3) (SG 149), 1960 QEII 10/-, 20/-, 1922 3/- and 10/- specimens (SG 90s, 94s) etc on leaves including Tanzania, Zambia and Uganda issues to 1970; Tanganyika, 1922 5/- mint, 10/- used watermark sideways (SG 87 CV£400) (illustrated), set to 3/- (SG 74-85); Southern Nigeria, QV part sets to 1/- mint; St Vincent, QV 1d, 4d, 6d used, and others including Yemen and Seychelles QV 36c / 45c and 48c Specimen (SG 27, 7s). *MUH, mint and used*. (100s)
\$200

Ex Dr C.Haymes Collection.

1484

Ascension, a small collection on leaves and Hagner sheets, noted extra 5/- and 10/- KGVI (SG 46, 47a), O/P on St.Helena KGV (5) (SG 1-3, 5 and 9); several 1924 series to 1/- (8); KGV pictorials (5), KGVI set to 10/- with extras mint, QEII set to 5/- used, others sets etc to 1970, a Hagner sheet of mostly QEII issues of St. Helena with part sets to 1982; Bahamas, collection on album leaves and Hagner sheets, noted 3/- specimen (SG 61s), 2/- and 3/- (SG 131-2), 5/- KGV (SG 88), 1942 Columbus set to one pound with extras, QEII set to 5/- (SG 201-214); Bermuda, QV to 1/- (4) and ship set to 1/- (7); Bechuanaland on three leaves from 1937; Leeward Islands, QV sets several as plate blocks of 4 or vertical pairs (SG 1-5), QV O/P of 1d (3) (SG 17-19), KEVII partial set to 5/- (6), 1935 Jubilee, 1948 Wedding in blocks of 4; 1954 QEII set to \$4.80 (SG 126-140), together with various Judicial and Specimen issues QV-KGV (7); Trinidad & Tobago War Tax issues various types (20) mint and used; British Guiana, on leaves or Hagners assorted issues and part sets from 1862, noted two sets including 60c, 96c and \$1 KGVI (SG 315-317); Jamaica, KGVI part as blocks of 4, single set to 5/- sets, St. Lucia KGVI set to 5/-; Dominica 1903 series 1/d - 6d (7) and a few singles from other countries. *MUH, mint and used.* (100s)

\$200

Ex Dr C.Haymes Collection.

1485

Ascension, various issues including SG 1, 1934 issues to 1/- (SG 21-28), 1935 Silver Jubilee set with extras, 1937 Coronation, 1938 various issues to 1/-, Victory, Royal Silver Wedding including 10/-, UPU set, Coronation set. *Mint, hinged for all except, extras (3) used.* (39)

\$100



part

1486*

Austria, 1948 set of Provincial costumes, 3 groschen - 10 schilling, complete set including 1 schilling red (SG 1126 CV £130) (illustrated), (SG 1108-1144). *Fine mint with minor hinging.* (37)

\$70

Ex Philas Stamp Auctions, 9th March 2013 (lot 1150).



lot 1487 part

1487*

British Commonwealth, collection in a brown Lighthouse album with issues from various countries with a good range of pickings, many are KGVI but also some QV - KGV and QEII noted range of issues from Bahamas, Aden, British Honduras, Cape of Good Hope (include 1d triangles (2), one on blued paper other illustrated; Cook Islands, British Solomon Islands SG 60-72 (CV £85), Cyprus, Fiji, Gilbert & Ellice Islands, Gold Coast including 1938 set to 10/-, India QV issues, Monserrat, QEII 1953 set to \$4.80 (no 48c), selected 1953 Coronation, British East Africa issues, noted KEVII 2 rupees used SG 27 (illustrated), British South Africa Company, Orange Free State, Natal, Norfolk Island, Western Samoa, Tristan da Cunha, Papua, Territory of New Guinea, Kenya Tanganyika and Uganda, Trinidad & Tobago, Trinidad, Johore, Tonga, Transvaal, Virgin Islands, Zululand, etc. *MUH, mint and used.* (100s)

\$260

1488

British Commonwealth, in four albums one in a KA-BE hingeless album, containing Nauru stamps, a few issues mint to 1935, but relatively complete from 1935-1986 including M/S these almost MUH, another stock book of similar issues from Nauru from 1935-1980s as singles, blocks, M/S, special uses etc; a large stock book of MUH issues from Samoa, blocks, M/S, issues 1973-1986; another stock book of PNG, MUH issues mostly in blocks of 4, 1970s-1980s. *A useful accumulation, almost all MUH, a very few used.* (100s)

\$120

1489

British Commonwealth, mounted on stock book leaves, an almost complete collection of KGV 1935 Silver Jubilee issues these mint, a similar set of 1937 Coronation set including Newfoundland mostly mint, together with Fiji issues of QEII pre-decimal c.1960 £1 (block of 4 and 3 singles), similar for 10/- (SG 309, 310), decimal to \$2 (SG 391-407) and some others; as short sets of Christmas Island, Cocos (Keeling) Islands, Tonga, Ross Dependency and NZ Government Insurance, Bahamas 1965 and 1967 sets to £1 and \$3' issues of QEII Great Britain and Provincial issues, Hong Kong 1962 set to \$20, with additional block of 4 of the \$20 (SG 210); a few issues of Iceland and Iran are added. *MUH, mint.* (approx 700)

\$500

1490

British Commonwealth, a incomplete collection of issues in a small stock book, containing KGV Silver Jubilee stamps of 1935, a wide range of issues with duplication, mostly mint a few as blocks or pairs, many are used. *Mint and used.* (approx 250)

\$100

1491

British Commonwealth, 1937 Coronation set complete as pairs or blocks housed in Stanley Gibbons Coronation album, some issues with paper toning, mint/MUH; covers from the Gilbert and Ellice Islands, FDCs including 1937 Coronation (2), Peace (4), UPU (1), Registered covers KGV 1922 (3), KGVI cover 1951 issues to 5/-. *MUH, mint and used.* (approx 100)

\$80

Ex Philas Stamp Auctions 9th March 2013 (lot 2343) for Gilbert and Ellice issues.

1492

British Commonwealth, Pacific and Indian Ocean Islands, a small collection of various countries housed in two blue albums, one album including Pitcairn Islands mint/MUH 1940-late 1970s, appears complete, noted 1949 wedding set, 1957, 1964 definitive sets, Tokelau Islands to O/P for decimals; Tonga, mint scattered issues, 1938 20th anniv. noted (SG 81), also 1964 set, other partial sets, 1962 Emancipation, 1963 circular coinage stamps, 1966 airmail etc O/P, 1967 O/P; second album includes, Fiji used to 1954 from 1937, includes a few of the 1938 series, various issues of 1954 to £1, mint scattered from 1938-1967, others value to £1; other sets from Niue, Christmas Island, mint and used, Gilbert and Ellice issues, Kiribati MUH issues to early 1980s, specimen issues included, a few M/S; together with an envelope containing other issues to be inserted into the collection. *MUH, mint and used.* (100s)

\$150

Ex Malcolm S. Burrells Collection.



1493

British Honduras, KGV \$5 purple and black on red, (SG 110, CV £275). *Fine mint.*

\$100

1494

British Pacific and Indian Ocean Islands, a quantity of post office packs, FDCs etc from Cocos (Keeling) Islands, Nauru, Norfolk Island, AAT, Christmas Island, Fiji, quantity of sets on large Hagner sheets and a stock book as a collection of issues from Christmas Island, Nauru, Cocos (Keeling) Islands, and some Pitcairn Islands; an empty cliplock hingeless album Seven Seas type for Norfolk Island. *MUH, mint and used.* (100s)

\$100

Ex John Jackson Collection.



part

1495*

British Solomon Islands, on a hagner sheet, canoes 1907 set (7) most struck down on sheet, 1908 set (11) some with toned gum, (SG 1-17). *Mint.* (18)

\$120



part

1496*

British Solomon Islands, 1908-1960, sets on approval cards, includes 1908 set to 5/- (SG 8-17), KGV 1913 set SG 18-21, 1914 set to £1 (£1 illustrated), 1922 set to 10/-, Silver Jubilee set, 1937 Coronation, 1939 set to 10/- (SG 60-72), 1940 Postage Due set of 8 to 1/6, together with booklets for 4/-, 11/- and £1 (SG SB1, 2, and 4a). *MUH and mint hinged.* (lot)

\$250

Ex Status International Auctions Sale 294, 31.1.2013 (lot 529).



1497*

British Solomon Islands, 1914-1923, 10/- green and red/green, (SG 37); £1 purple and black/red (SG 38), both watermark Mult. crown /CA, (CV £345). *MUH.* (2)

\$200

Ex Status International Auction, Sale 199, 21 September 2001 (lot 3161).



part

1498*

British Solomon Islands, on a part hagner sheet, KGV 1914-1923 basic set to £1, (no shade varieties), (SG 22-38 CV £425), (5/-, 10/- and £1 illustrated). *Mint.* (14)

\$150



part

1499*

British Solomon Islands, 1922-1931, specimen set 1/2d green - 10/- green and red/green, (SG 39s-52s), watermark Mult. crown / scrip CA, (CV £400). *Fine, mint light hinge.* (15)

\$250

Ex Status International Auction, Sale 199, 21 September 2001 (lot 3166).



part

1500*

Brunei, collection housed in a Stanley Gibbons 'Exeter' album No.2898, issues from 1906, (SG 11, 12, 16 [CV £75], 22 [CV £130] illustrated); 1907, (SG 24 [joined pair]. 26, 27 [CV £95], 29); 1908 set 1c-\$5 (SG 38-48, [missing 30c, 50c shade, \$5]); 1916 5c (5 including block of 4), 8c (SG 49-50); 1922 Malaya-Borneo Exhibition O/P (17), 1c - \$1 used (CV £200), (\$1 illustrated), with extras varieties a few mint (SG 51-59), 1924-1937 set with extras (20) (SG 60-78, no 63); 1947 incomplete set (25), values to \$10 including a block of 4 \$10 (SG 79-92, missing several low values); issues of 1949 Jubilee, UPU, 1952 set to \$2, 1954 set to 50c, FFH and others incomplete to 1971. *Mostly used a few mint.* (lot)

\$250

Ex Malcolm S. Burrells Collection.

1501

China, 1878, 3 candarins perf. 12.5, yellow colour, (SG 3a, CV £2300). *Mint and rare.*

\$100



1502*

China, 5 ca. yellow ochre on pelure paper wide printing (4 1/2mm apart), (SG 6, CV £20000). *Mint, rare.*

\$1,500



1503*

China, cover to Shanghai, fixed with 5c on 5 ca, olive yellow, bar cancel (SG 41). *Used.*

\$200



1504*

China, 1897, revenue stamp used for postal purpose, 1c on 3c deep red, (SG 88, CV £375). *Fine used, rare.*

\$100



part

1505*

China, Specimen enlarged printings of 1894 series for 1/2c, 1c, 2c, 4c, 5c, 10c, 20c, 30c, 50c, \$1, \$2 and \$5 on a large sheet, printed on red lined paper with 'Imperial Chinese Post' label attached, (cf,SG 96-107). *Mint.*

\$800



part

1506*

China, plate block printing of the two cents (SG 151) as a sheet of 30 stamps (18 upright, 12 inverted), imperforate. *Mint.*

\$200

1507

China, dragon set, no watermark 1900-1910 series 1/2c - 10c with extras of colour changes, noted 7c offset (SG 121-123, 125, 127, 151-152, 154-155). *Mint.* (9)

\$100

1508

China, a small collection mounted on old album leaves, noted used 1897 - 1933 various part set issues to \$5 mostly junk, reaper and Classic Hall issues, 1912 commemorating revolution to 16c (SG 242-248), commemorating the Republic 1c - 50c (SG 254-262) 50c scarce, others commems (SG 257-260, 362-365, 372-374, 376-378, 380-382); Martyr surcharges etc, People's Republic noted (SG 1456, 2030-1), China O/P on Hong Kong and Germany, Postage Dues 1904 1/2c to 10c, 1c brown (SG D168), other Postage Due c.1913-5, 1932. Mostly used, a few mint. (*approx.* 200)

\$100



part

1509*

China, a collection housed in a blue Edelweis stock book, containing issues from 1909 in mixed condition with much paper toning, (SG 165-167) (2 sets used); mint sets of commems (SG 357-360, 362-365, 372-375, 380-383, 440-443, 448-0451) the \$1 values scarce; Martyrs set mint, 1941 thrift set, 1944 war refugees relief fund M/S (SG MS730, CV £325 each) (2, both with spotting) (illustrated) set of singles; set (SG 606-615, extras some blocks of 4); 50th anniv. (SG 740-744), death of Sun Yat-sen (SG 746-751) also as blocks of 4; Pres. Lin set (SG 768-773), 1945 inflation issues surcharges including (SG 825-829, cf.SG 830-885), 1946-7 issues (SG 906-915, 942-946, 951-971 etc, 1032-1043, assorted issues as O/P 1948-9 of SG 1049-1151), Postage dues issues; used sets of 1913-1933 to \$2; Japanese issues for Taiwan, noted 1945 set imperf. with O/P to 10y (SG 1-9); Chinese Province issues (SG 26-40); North-East China (Yang NE1-16, NE 17-29, some as imperf. pairs, NE44-50, 60-63 (2 sets), 64-67, 69-72, 79-82, 93-95); 1947 Mao set (Yang NE83-92); others O/P; also most (Yang NE139-155), (SG NE286-289, 293-297 are reprints etc), NE 290-292 p.14, (2 sets); People's Republic, (SG 1401-1411), (1456-8); 1946 Antung (Yang NE239-245, additional with O/P: Siman, (Yang 319, 320-325 etc); Port Arthur, Dairen and Kwangtung Areas, some with off centred O/P, noted (Yang AD53-54, 56-57, 63-64, 66). *Mint, MUH, used, some with paper tone.* (100s)

\$2,000

1510

China, various covers, 2 x 10th Anniversary of Govt. in Nanking, 18 April 1937 fixed with (SG 389, 411, 448, 454); 2 x 41st Anniversaries of the People's Liberation Army date stamped 1968 9.15 and 1969 1.17; other covers one registered fixed with 1932 10c (SG 415); another cover with junk 10c (type SG 297), another fixed with gate of Heavenly Peace 1952 (SG 1622); another interesting cover from Shanghai 1948 fixed with (SG 1002, 1034, 1051, 1054, 1055 (3), 1074); another very large piece fixed from Tainan (Taiwan) 2.7.47, to Johannesburg South Africa with 35 stamps as blocks and singles, noted Taiwan as a Chinese Province including (SG 10, 11, 12, 13 (2), 15-18, 20 (9), 21 (2), 22, 23 (4), 25 (6), 29, 36, 40); letter card 3c O/P as a ration card; and a 1949 document fixed with a \$10,000 stamp numbered duty stamp. *Used, some scarce.* (lot)

\$200



part

1511

China, on old stock containing stamps of China, noted used Hall of Classics issues for \$1, \$2, \$5, \$10, \$20 (SG 328-332 last with CV £450 illustrated), 1948 Central and South China 1948 set mint (SG CC21-26 CV £95), Victory set North China in blocks of 4, and many multiple singles stamps (SG NC17-24, CV £150 per set of singles) and a few used, "Unit" stamps of 1949 as blocks of 4 (SG 1211A-1214A, CV £440); lot also includes a few issues from Straits Settlements, India, Brunei; multiple examples of SG NE56, NE57 (1 example only), assorted Mao issues including N-E China People's Post (SG NE133-136), Shanxi-Suiyuan Border (SG NC238, 240, 241) and others also quantities of the Martyrs issues for various denominations and many with over-prints; also two covers (9x\$1, other 3x\$1, \$5 with O/P 'Hwa Pei' for Japanese Occupation of North China. *Mostly mint, a few used, some scarce.* (100s)

\$500

1512

China, a collection of mostly blocks and part sheets of Chinese Republican stamps stored in 37 glassine envelopes noted 1943 Provincial Surcharges Martyr type 20c on 13c Honan, Hupeh, Kwangsi, Shensi, Kansu, Kweichow (SG 690a, 690d, 690f, 692a, 692c, 693d), 20c on 17c Kwangsi (SG 697a). 20c on 21c Hunan, Kansu (SG 694b, 694d) and many others, issues on Sun Yat-Sen 20c on 16c Kansu, West Szechwan (SG 691c, 691i), etc, also 50c on 16c East Szechwan perf. 13 (SG 689Bi), Shensi perf. 13 (SG 698Bh), both scarce; also 50c on 16c with obliterated original surcharge for Kwangtung part sheet of 50, (SG 701Ah) scarce, etc, and a vertical pair of \$20 with upper perf. a double perf. on a small stock card. *Mint, MUH.* (many 100s)

\$500

Stored in a Michael Rogers, Florida folder.

1513

China, in a blue Universal stock book, an extensive range of issues of the overprints of 50c on 16c for various provinces as singles and blocks and a whole sheet, many identified (SG 689B) with various perforations (100s), other issues for Kansu etc, (SG 701A), noted Martyr types for 20c on 13c, on 17c, on 21c, on 28c, 1c on 1/2c (various SG 622-4), various CNC surcharges, on loose sheets and (11) cards, many varieties, noted Brunei 8c on piece with Japanese O/P (SG J9, CV £900), some in packets from other dealers, trials on rice paper of O/P only on cards, perfins with O/P. *MUH, mint and used.* (100s)

\$800

1514

China, East China, 1949 Victory \$1-\$10 (5 values), in imperforate blocks of 4 (SG EC344-348). a limited printing issue. *Mint.* (4x5 = 20)

\$100



part

1515*

China, printed sheets of Mao issues commemorating 1949 28th anniversary of Chinese Communist Party. no gum imperforate sheets of 35 stamps each of \$10, \$20 and \$50 (part illustrated), (SG NC327B-NC329B, CV £2000). *Mint.* (105)

\$200



part

1516*

China, accumulation of issues with duplication on seven Hagner sheets, Republic and Communist issues including O/P issues, noted a specimen sheet with printed labels of the 1947 50th anniversary of Directorate General of Posts (SG 985-989), also noted \$20000 on \$10000, unissued SG 1431 (SG 1431 CV £725) and 8f orange-red perf.12.5 (SG 1650a CV £500); (last two both illustrated). *Mint and used.* (100s)

\$300



part

1517*

China, an interesting collection stored in a green Lighthouse stock book, noted a range of Local overprint issues of Manchukuo of 1936 and 1944, some as blocks, pairs etc a few with the Nationalist sun as part of the overprint, O/P in various colours (red, green, purple, blue etc) noted as Chu Kia Kan, Chu Ho, Hu Ho, Chan Chun Chen, Hu Lan, Sze Fang Tai, Yen Show, lot also includes perfin of the junk and reaper series of 1913 (12), lot also includes China \$2 (SG 305 CV £600) (illustrated) also several unlisted denominations and colours of 1942 - 1946 Sun Yat-sen issues (\$2 blue joined vertical pair, \$2 brown purple, \$10 red brown part imperf., airmail O/P on 1/2 cent General Teng K'eng unlisted type, sets of the Martyrs mint with extras; includes several Municipal Posts of Treaty Ports, including Ichang 15 cand. (2) mint (CV £110 each), another 3 mce used (CV £120), 2 cand O/P, Nanking used, Wuhu and O/P on Kewkiang, Chinkiang with 5c O/P (SG D40 £100); others of Junk series with O/P in 1927 for Machuria (Kirin and Heilungkiang) to 50 cents mint, Air mails of 1932 in large blocks of 10 used with O/P revaluations, (SG 820-824); assorted dragon stamp issues of 1885; Shanghai Postage dues mint O/P, etc. *Mostly mint, some used a few with paper toning, contains many scarce items.* (100s)

\$1,000



part

1518*

China, an extraordinary accumulation and collection stored in a green Importa Edelweis stock book, noted several rare varieties (SG 69a imperf between horizontal pair cat. £225) (illustrated), Taiwan revaluation surcharges (5) including \$1000/30c grey (SG S4), Japanese occupation, 5th and 7th anniversary North China political Council as upper blocks of 4 (SG 194-197, 204-208); 20th anniversary of death of Sun Yat-Sen (SG 746-751 cat £40) and some as blocks of 4 (CV £130); Manchukuo O/P, 1941 issues to \$20 (SG 583-598 noted 17c block of 4 SG 590 a block of 4) and a quantity of other issued mint and used, Memory of Pres. Lin Sen set (SG 768-773), other commems, noted M/S of North East China Peoples' Republic, 10th anniversary of war with Japan (MSNE 178 cat £750) (illustrated); 1944 War Refugees part set with duplication, cut diagonally of 2c issues postally used for 1c on piece (2) for Foochow (SG 134) (cat £500) (illustrated); North East China People's Post sets (2) (SG NE133-136 perf and imperf sets, CV £250) and most issues from (SG NE 145-157, 174-177, 189-198, 202-204, 205A-206B, 210-212, 233-235, 312, 314) and others to 1950, perf and imperf.; also (SG NE 137-144); China (SG 1401-1404, 1408-1411), many normal issues with O/P some in blocks, noted (SG CC179A-184B, two sets both perf and imperf.), lot includes many issues of China Peoples' Republic, noted Mao set (SG 1432-1435 cat £425), 1945 Victory over Japan (SG NC 17-24). *Mostly mint some with paper toning, contains many scarce items.* (100s)

\$1,500



lot 1518 part



part

1519*

China, East China People's Post, Seventh Anniversary of Shandong Communist Postal System, \$5, block of 10 with large character O/P (obliterate Japanese flag), imperf. at top two stamps in block (SG EC325var.); North China People's Post, O/P \$12 on \$200 carmine (3), (SG NC260); others (12), uncertain portraying Wang Mang spade money various denominations; Local post Kewkiang O/P 1/2, 1 and 2 cents, last as vertical pair (illustrated) (SG 18-20); China Republic, set of Marshall hang Tso-lin posted at Harbin (SG 372-375) 4 and 109 cent with red O/P for Manchuria (SG 21-24); Manchuria, Kirin and Heilungkiang. Mausoleum set with O/P 1929 (SG 29-32) used (SG 32 illustrated); together with covers from Hong Kong (10) c.1970s-1980s. *MUH, mint and used.* (35)

\$180

Ex Hong Kong Stamp & Coin Dealers Association, (lot 531); last lots from Philas House Sale 110, 9 March 2013 (lot 2278).



1520*

China, South West China, People's Post with O/P on \$100 carmine with busts of Zhu De, Mao Tse-tung and troops, hand surcharge on marching by the PLA, (Yang LSW 52). *Mint (no gum).*

\$100



1521*

China, 15th Anniversary of People's Republic, M/S 150x114 mm, featuring the three issues as a triptych, (SG MS2215a CV £5000). *Mint and rare.*

\$750



1522*

China, 1967 Mao's thought 8f set of 2 se-tenant strips and single, SG 2343 - 2353, (CV £6400). *MUH.* (11)

\$500

1523

China, various M/S, 1976-1979 (SG MS2781, 2834, 2865, 2922), (SG CV £1725). *MUH.* (4)

\$400

1524

China, food coupon collection, housed in red folder with an extensive range of issues 1955-1992, with a diverse range of values. *Mostly extremely fine some better, mostly different.* (382)

\$200

Ex Status International Auctions Sale 263 (lot 769).

1525

China, various sets on show cards, 1963 Panda set of 3 (SG 2116-2118) used; 1972 Physical culture (SG 2480-2484, CV £140); 1974 gymnastics (SG 2549-2554 CV £80); 1974 UPU (SG 2567-2569); 1977 11th congress (SG 2736-2738); 1978 Army and people, animal husbandry (SG 2753-4, 2794-6); 1978 birds (SG 2847-9), 1984 birds (SG 3311-3). *MUH unless stated.* (36)

\$100



part

1526*

China, People's Republic issues on show cards, including 1971 tennis set of 4 (SG 2466-2469, CV£130); 1972 table tennis part set of 3 (SG 2489-2491 CV£ 66); Wang Chin-hsi hero (SG 2493 CV £50); 1972 merchant shipping set of 4 (SG 2485-2488, CV £250, illustrated); 1973 set of 12 Archaeological treasures (SG 2537-2548); 1974 various issues National day (SG 2584 CV £60); Mao directives (SG 2585-2587); Fair (SG 2588); Albania liberation (SG 2589-2590); doctors (SG 2570-2573, 2653-2656). *MUH.* (39)

\$250

1527

Cocos (Keeling) Islands, a collection stored in a stock book and in glassine envelopes; Christmas Island, a collection stored in two stock books and glassine envelopes; Samoa, a small lot in a stock book etc, together with six (6) empty stock books. *Mostly MUH.* (lot)

\$150

1528

Falkland Islands, an accumulation in a spring-back stamp album with various issues from Queen Victoria - 1977, includes Dependencies South Georgia, on loose sheets and Hagners, noted 1938 set to 10/-, 1952 set KGV with extras including some used to 10/-, part set of 1933 centenary, QEII 1960 set to £1; cover with copies of 5/- & £1 1933; wedding pair, blocks of QEII issues etc; together with various issues of Tristan Da Cunha on leaves and St. Helena. *MUH, mint and used.* (100s)

\$200

Ex Dr C.Haymes Collection



1529*

Fiji, imperforate plate proof of 2d grey KGV (cf.SG 233) printed on watermark 10 SG for Ireland. *MUH and very rare.*

\$100

Ex Status International Auction Sale 220 (lot 3050).

1530

Fiji, a large black stock book containing issues of pre-decimal and decimal stamps from 1890s in mixed condition but mostly KGV - QEII, lot has duplication throughout, issues are all grouped together, noted scarce blue cane, decimals issues in quantities with values to \$1. *Mostly used, some mint.* (approx 1,000)

\$60



part

1531*

Fiji, covers including FDC 13/3/1950 fixed with 10/- and £1 (SG 266a, 266b) (illustrated); another FDC 5/4/1938 fixed with 1/2d and 1d (SG 249, 250); ordinary covers a) Suva - London fixed with 4 x 5d KGV (SG 236); 3 (three) covers one registered all each to Berks, UK fixed with 6 x 3d Coronation and 1 1/2d (SG 232); registered cover as a FDC, 10 Fe 41, fixed with 2 x 2 1/2d/2d map (SG 267). *Used.* (7 covers)

\$100

Ex Phoenix Auction Melbourne, Auction 17, 2012 (lot 74).



1532*

Germany, 1948 American Zone, local issue on 1, 2, 3 and 5 Dm 'Dove of Peace' with overprint with multiple images of horns, (5 DM illustrated), the issue of 18 June 1948, currency reform, (MiA1/11-A1V/11 CV 1000 Euros; SG (cf.p54 lower values only, 1 - 5 Dm not listed). *MUH.* (4)

\$400

Has been expertised by Schlegel A BPP.



part

1533*

Gibraltar, a collection housed in a Davo album in a slipcase, with an extensive range of issues from 1886-c1982, 1886 overprint set mint with faults except for 2d used, 1886-7 set to 1/- (no 6d), mint and used, 1889 set of 7 mint, 1889-1896 set mint to 5 pesetas, mint and used Edward VII set mint and used to 2/- with additional 8/- mint, 1904 set similar to 2/-, 1907 set to 1/-; George V 1912 set to £1 mint (missing 1d and 2 1/2d), 1921-1927 set mint (4/- used), (missing 1 1/2d and 3d), complete mint/MUH from 1931-1974 and other issues missing a few sets to 1982, noted a block of 6 of £5 also includes M/S and a few postage dues. *MUH, mint and used.* (100s)

\$1,000

Ex Velvet Collectables (lot 635).

1534

Gilbert & Ellice Islands, 1911 set 1/2d - 1/- overprints on Fiji, used; also Pandanus Pine set mint and used (illustrated) this postmarked for Butaritari Island, (SG 1-11); oddments mostly mint including 1935 Jubilee set, KGV set 1/- to 5/- and £1 1948 wedding commem. *Mint and used.* (26)

\$150

The Gilbert and Ellice Islands Protectorate was established in 1892 in the Central Pacific Ocean, named after the first two island groups that were declared part of the new territory. More islands were added later including Butaritari one of the group that made up sixteen islands in the Gilbert group.



1535*

Great Britain, 1840 1d Black, imperforated, the worlds 1st postage stamp (4); (2) with red Maltese Cross cancel, (2) with black Maltese Cross cancel. *Used, all with faults, thin, or cut in two with repair or cuts into edge of stamps.* (4)

\$200

1536

Great Britain, cliplock album of used issues including 1d black of 1840 (damaged), together with 1841 (4) 1d and 2d, various perf. and wmk. issues of 1d and 2d of 1854-7 (9), a range of different plate numbers as a collection of 1858-1879 series (62) a few scarce (many extras in envelope), includes 1/2d (7) including two on letters both from Carlisle 1874, 1877, noted 4d (SG 66), 2 1/2d plate 1 and 14 (SG 139, 141), selected EVII with duplicates; together with loose stamps in envelopes in quantity, 1948 Olympics, QEII defs., UPU; together with another cover album of GB (106) as mostly FDCs from 1948-1974 several earlier, one a flight cover London-Singapore 1933. *Together with an accumulation of various Royal Wedding issues of 1981, blocks, singles M/S etc, all MUH.* (approx 500)

\$150

Ex Malcolm S. Burrells Collection.



part

1537*

Great Britain, 1841-50s bulk selection on 2 album pages of 1d Red imperf. (30) (some on blued paper, 2x2 as joined pairs); 2d blue 1841 (3, one illustrated) one on piece damaged with 1d imperf issue; 1d Red (16) and 2d Blue perf, a range for plate no. Post Office numerals and cancels; also includes 1/- (plate 14) (SG 163 CV £160); also SG 172, and (5) 1937 Coronation used. *Used, variable condition.* (57)

\$100

1538

Great Britain, a large red Briefmarken stock book containing issues of pre-decimal stamps from 1850s in mixed condition, lot has duplication throughout, issues are described with SG numbers, noted scarce SG 82, 84, 152, 153, 178, 193, 263, also quantities of castles, and a useful lot of perfin from QV - QEII. *Used.* (1,000s)

\$120



part

1539*

Great Britain, Queen Victoria 1883 series, 1 1/2d, 2d, 2 1/2d, 3d, 6d, and 9d, (SG 188-191, 194-195), (CV £2,500). *Fine mint, several with trace of perf tone.* (6)

\$500



1540*

Great Britain, 1884 high value issue, one pound (£1) uncoloured letter in corners, wmk. three imperial crowns, SG 185 (CV £2,800). *Fine used, rare.*

\$500

Ex C.R. Deane Collection.

This stamp from NZ Stamp Auction 20.7.1999 for \$740.



part

1541*

Great Britain, a carton containing extensive issues of Great Britain from 1d blacks 1840 (2), one from Stanley Gibbons (cost £375) of Plate 3 with 4 full margins on card (SG 2) (illustrated) the other with red Maltese cross cancellation (3 full margins), quantity of 1d reds 1841-1850s some on dated pieces and error varieties, 2d 1841 (2) also Govt Parcels; issues of KGV colour varieties Mint-MUH to 1/- (SG 351-429), others on Hagner cards, including Edward VII with much duplication mint to 1/- including inverted wmk. etc; KGVI 10/- both colours, £1 all mint; accumulation of Jersey and Guernsey etc, also FDC and post office packs, amny useful pickings, mint sets of Heligoland and Ionian Islands. *MUH, mint and used.* (100s)

\$500

Ex Dr C.Haymes Collection.

1542

Great Britain, a carton containing a Schaubek stamp album of leaves fitted to backing strips for each stamp from 1953 used mostly from 1953-1960, from 1960-1974 complete (appear MUH); cliplock folder with Hagner sheets of MUH and used GB, from 1988-1990s with multiples of castles and commems used; together with two cliplock folders of selected FDCs from 1960s-2002; and two folders of first and third Annual St. Patrick Day Covers. *MUH, mint and used.* (100s)

\$100

Ex John Jackson Collection.

1543

Great Britain, in a large box, together with MUH issues of Jersey, Isle of Man and Guernsey on album leaves together with booklets (7) etc, also Great Britain first Day Covers including a cliplock album of issues, stamps on large parcel pieces, Post Office cards and similar from the Isle of Man, together with Royal Wedding 1981 FDCs from many world countries includes M/S, 21st birthday of Princess Diana (approx 60); together with booklets from Alderney (10); Red Cross Centenary cover from Tristan da Cunha, 1 Fe 84. *MUH, mint and used.* (100s)

\$100

Ex John Jackson Collection.



1544*

Hong Kong, 5 dollars surcharge on \$10 QV purple/red Postal Fiscal issue, (SG F9 CV £375). *Superb mint.*

\$120



part

1545*

Hong Kong, KGVI set 1c to \$10, includes all colour types including \$10 green and violet (paper gum toned) (illustrated), (SG 140-162, CV £1100). *Mint.* (23)

\$250

1546

Hong Kong, KGVI set 1c to \$10, includes all shade and perf. types mint, missing mint and used the \$10 green and violet, also 25c bright blue mint, \$2 both types mint, but includes additional examples as used to \$5, (SG 140-160, 162, high CV). *Mint, used.* (33)

\$100



part

1547*

Hong Kong, MUH 1941 centenary of British occupation, 2c - \$1 (SG 163-168); 1946 Peace pair (SG 169-170); Royal Wedding \$10 fine used (SG 172 CV £130) (illustrated); QEII 1964 mint set 5c - \$20 (SG 196-210 CV £160). *MUH, mint and used.* (23)

\$100



part

1548*

India and Pakistan, used collections of each country stored in two albums, noted Edward VII 10 rupees, 1911 KGV 10, 15 and 25 rupees, 1926 5 and 10 rupees, 1929 air mail, 1931 Inauguration of New Delhi, Silver Jubilee, KGVI to 25 rupees, also noted Ghandi 10 rupees (SG 308, illustrated), other issues to 1962, noted OHMS and Service, surcharges one rupee on 15 and 25 rupees KGV, KGVI to 10 rupees; Pakistan collection from 1947, few complete sets, oddments etc to 1960s. *Used.* (100s)

\$150

Ex Malcolm S. Burrells Collection.

1549

Ireland, 1794-1864, a collection of various pre-stamped covers, envelopes used for postal purposes all stored in a leather bound spring-back album, sections of bishop markings, Circular Year date stamps, etc., a fine selection includes 'IRELAND', named stamped postal issue stamped with city stamping includes Limerick, Loughill, Cork, Belfast, Mullingar, Galway, Hillsboro, Newport Tip, Randal Stn, Derry, some issues are "Post Paid" or "Paid At" pmks, "Mid-Day Mail", "Sunday", "ATF", "Late Mail", all with various postmarks, a fascinating group, all are neatly mounted on exhibition pages with textual additions and references (all text in German). *Mostly fine.* (35 items)

\$600

Ex John Jackson Collection and acquired from H.Berger of Schiers, Switzerland. Each page suitably inscribed, and priced in Swiss Francs.

1550

Ireland, 1757-1864, a collection of various postal covers and sealed letters for postal purposes, some with detailed descriptions, 1757 to Belfast from Dublin with circular postmark EF/24; 1796 via Donaghadee to Edinburgh with circular stamps NO/1 in red, OC/27/96; partial cover, Dublin to Tullow August 20, 1830 with Dublin "Crown/Free" stamp; to Cheltenham dated 1840; another Feb 7, 1840, Villatote to Dublin; Carlow to Lisburn Post Paid dated My 11 1840; similar from and to Ballymona Au 13 1844; Mr 20 1844 Paid at Gort to London with various stamps; Craine to Ballymony, Ja 12, 1849; another similar to Ballymona, Ju 29, 1847. A fine selection includes some with city stamping. An interesting group. *Mostly fine.* (10 items)

\$150

Ex John Jackson Collection as purchased from various dealers.



part

1551*

Ireland, 1877 envelope from Dublin to Bombay, India franked 8d plate 1 (SG 156 CV £600), with Dublin '186' duplex date stamp, routed by Brindisi on verso Sea Post Office F cds; another 1858 wrapper to Marseille franked two 4d (SG 66 CV £210 for single stamp) tied by Dublin '186' duplex date stamp, London transit cds on verso. *About fine.* (2)

\$150

Ex John Jackson Collection and both from Cover Story, 6 Cecil Court, London (stamp dealers).



part

1553*

Ireland, stamps of Great Britain with use in Ireland, 2d imperf with full margins on cover from Limerick Jul 1, 1850; 1d red brown from Waterford Au 19 1848; another Newtown Au 9, 1845; 1d perf My 3, 78 from Dungannon; 6d plate 17 on cover Dublin to Melbourne, De 29 1881 arrived Fe 6, 82 (illustrated); together with stampless letters January 1800, others of 1812, 1821, 1825, 1827, 1832, 1836; and a penny post cover with embossed stamp from Cribberteen Oc 11 1841 with various stampings. *Some interesting issues, used.* (13)

\$150

Ex John Jackson Collection.



1552*

Ireland, Pre-stamped and Queen Victoria cover, with a 1d black on cover with red Maltese cross postmark from Castle Pollard to Dublin with red Maltese cross cancelation and diamond postmark, 4M Oc 22 40 (1840). *With four full margins, fine and scarce.*

\$150

Ex John Jackson Collection and previously from Status International Auctions Sale 223 (lot 3622).



part

1554*

Ireland, stamps of Great Britain with use in Ireland, mostly with 1d red imperf (2) issues noted 1845 letter from Banbridge (Co Down) to London (SG 8) with receiving handstamp of Laurencetown/Banbridge, with diamond shape handstamp Ap 25 1845; others from Dublin to Castle Douglas (My 22 1852); 1d reds perf., Dublin to Cahirconlish Ju/21/56; others Belfast to Leeds My/30/1859; others dated 1860, 1863 (Too Late, 2 x 1d), 1878 for 3d (3x1d) Ballymote to Tobercurry; 1/2d Postcard Monkstown Ja 10/77 to London. *Mostly fine, some interesting issues.* (8)

\$100

Ex John Jackson Collection.



part

1555*

Ireland, stamps of Queen Victoria used in Ireland, noted 5/- (2) (SG 180); 2/6 (SG 178), 1/- plate 5, plate 6 (3) (SG 117); 6d plate 11 block of 4 (Gort My 31, 72) (SG 122a) (illustrated); 4d (SG 66), 3d plate 8 and 9 (SG 103), others SG 190, 208, F19. *Generally fine used.* (14 items)

\$150

1556

Ireland, Queen Victoria, an extraordinary collection of Postal stationary on leaves, all described, includes PO postcards, letter envelopes all fixed with impressed stamps portraying Queen Victoria (approx 100), together with impressed stamps cutouts from post cards, together with other issues QV to KGV as stamp covers; also early date stamps c.1840-1850s together with a collection of stamps as cutouts from letters from different Irish towns, includes an interesting postcard from Siberia to Ireland 1904. *Used.* (100s)

\$300

Ex John Jackson Collection.



part

1557*

Ireland, extensive collection of used in a Lighthouse hingless Eire album, with some additional duplicates added as well, issues from 1922 (SG 1-9, 10-15, 26-29, 30-42, 52-62, 67-70 with 2-3 examples of each, high CV); seahorses (SG 64-66, 85-88, 99-101, 10/- O/P double illustrated, high CV); other definitives from 1922 commem issues from 1929 some as multiples, 1925 Postage Dues, all issues from 1922 appears complete with many extras to 1989. *Used.* (100s)

\$400

Ex John Jackson Collection.



part

1558*

Ireland, 1922-1934 1d carmine, watermark "SE", variety perf 15 x imperf joined vertical pair (SG 72b CV £500) used with "GROW MORE WHEAT" slogan cancellation (illustrated); another pair postal use dated 3 X 35 (SG 112c); another mint example 14 x imperf. (SG 112b); 5/- Seahorses with circular date stamp from Sr Sheamus, 27 VIII/28 wide date, 1940-1968 definitive issue "St. Patrick" 5/- maroon inverted watermark, (SG 124cw); other stamp issues mostly from the 1930s-1940s with duplication on Hagner sheets, and show cards, a few in celephane packets described. *Mostly used, some scarce.* (approx 200)

\$300

Ex John Jackson Collection, first pair from Status International Sale 221 (lot 3302); 5/- Seahorse from Status International Sale 218 (lot 3447); the 5/- St Patrick from Status International Sale 119 (lot 3547).



1559*

Ireland, 1922-1934 2d grey green, watermark "SE", variety perf 15 x imperf (SG 74b CV £1600) used with "GROW MORE WHEAT" slogan cancellation; 1937 definitive issue "St. Patrick" 10/- dark blue with watermark multiple "SE" inverted, with circular date stamp BAILE ATHA CLIATH/18 AU/41". (SG 104w CV £1300). *Both used, second very fine used, both very rare.* (2)

\$300

Ex John Jackson Collection, each come with certification, first from BPA London, 13 September 2002, the second from Roy Hamilton-Bowen, Rodgau, dated 03.04.2012.



1560*

Ireland, 1922 Dollard 4 line overprint on Great Britain 1918 Bradbury Wilkinson Seahorses 2/6 redish-brown and 5/- rose-red with horizontal sheet margins affixed together on brown wove piece; 10/- grey blue single affixed to brown laid piece all tied by small circular cancels Duke Street/Dublin, 17 FE 22, the first day of issue of the Dollard Seahorses, (SG 18, 19, 21, CV £640). *Fine used.*

\$250

Ex John Jackson Collection.

The lot includes a coloured photographs with authentication certificate from Roy Hamilton-Bowen dated 23.3.2012.



part

1561*

Ireland, 1922-1923 3 line overprint by Thom in blue black on Great Britain 1918 Bradbury Wilkinson Seahorses wide dates 2/6 pale brown (2) and 5/- rose-carmine (2) and 10/- dull grey blue single (2, one a narrow date illustrated), one 5/- affixed to brown laid piece tied by small circular cancel dated, 6 JU 23, (SG 64a, 65, 66, CV £1300). *Fine used.* (6)

\$200

Ex John Jackson Collection.

1562

Ireland, in a white carton, mostly MUH issues housed in hingeless albums and on leaves (1973-1994) another in a Lighthouse hingeless album (1990-2006) includes M/S, sheetlets, PO sets etc appears to be about complete for all issues, another stockbook of MUH issues from booklets, sets etc and a quantity of Post Office packs (approx 30), FDCs and envelopes used c.1960s, postcards etc. *MUH, mint, used.* (100s)

\$500

Ex John Jackson Collection.

1563

Ireland, incomplete collection housed in a Leuchtturm hingeless album with selected used from 1990 - 2004 includes M/S and a few duplicates, (100s); together with a collection in clip lock stamp album each leaf with protective covered album leaves and varieties noted by red arrow on each leaf mostly for the issues of 1972-1975, most issues in large blocks; A Davo Eire stamp album to 1993 with mostly MUH scattered throughout the album, noted early used and M/S, 70% complete for 1970s-1980s; another cliplock album with FDCs 1996-1998 (approx 50). *MUH, mint and used.* (100s)

\$150

Ex John Jackson Collection.

1564

Ireland, as Republic, in a carton, assorted selected issues mostly on leaves 1970-1985 many as MUH including blocks, booklets, M/S, with duplication, some mounted on Hagner sheets and show cards together with Great Britain of issues for Ireland, together with Ireland year books 1998, 2006, 2007, third definitive Irish post series booklet with stamps (buildings), empty albums etc. *Mostly MUH and used.* (100s)

\$100

Ex John Jackson Collection.

1565

Ireland, Post Office year books, 1988-9, 1989-1990, 1990-1, 1992-3, 1993-4, 1994-5, 1995-6, 1997, 2002, 2003, 2004, 2005, 2008, 2009, 2010, a very few items noted as missing in most books. MUH (15); together with FDCs and other covers related to Ireland, and some 1000s of stamps of mostly Ireland off paper, some useful pickings. *MUH, used.* (100s)

\$150

Ex John Jackson Collection.

1566

Ireland, an accumulation in a box of stamps on Leuchtturm hingeless leaves, c.1990-2015, many of the leaves with MUH stamps issues as part of an extensive collection, includes M/S, part sheets, booklets and Hagner sheets of mostly used issues, together about 50 new hingeless clean album pages. *MUH, mint and used.* (100s)

\$200

Ex John Jackson Collection.

1567

Ireland, a large carton containing three large stockbooks mostly of used with much duplication from 1922 - the early 2000s, noted multiples of 10/- St.Patrick, commems etc, also a cliplock folder with slipcase with MUH, booklets and booklet panes and many as blocks of 4, MUH or used. *MUH, mint and used.* (100s)

\$150

Ex John Jackson Collection.

1568

Isle of Man, three collections, two housed in leather bound Lighthouse hingeless spring back album with mostly MUH issues 1958-1988 and 1989-1998 incomplete but includes M/S, PO special packs, sheetlets, postcards, a few used etc together with another similar album in slip case as a hingeless album with issues from 1991-2001, includes M/S, sheetlets, postage dues, booklets, with extras, appears complete with the range of types and the issue varieties etc. *MUH, used.* (100s)

\$200

Ex John Jackson Collection.

1569

Israel, in a large box, an extensive accumulation of first day covers from May 1948, together with other covers, airletters etc, with much duplication (approx 1500); post office cards with first day of issue, also special religious celebration cards fixed with stamps, and special issue cards with commemorative stamp inside and portrait on the honoured person on from of card (in all about 200); together with Philatelic information sheets and booklets etc. *Used.* (lot)

\$100

Ex John Jackson Collection.

1570

Israel, Collections housed in clip lock folders including used from 1970-early 1980s, collections of FDCs in clip-lock folders (2) c.1960s-1970s, another album of FDCs 1955-1957, another cliplock folder of FDCs with M/S, sheetlets included throughout; loose sheets MUH and used 1970s-1980s. *MUH, used.* (100s)

\$100

Ex John Jackson Collection.

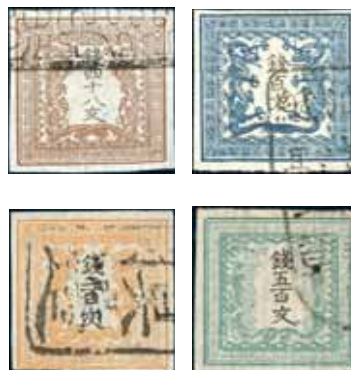


part

1571*

Italy, covers all fixed with stamps to mostly Palermo and Napoli etc, mostly posted from various cities in Sicily and Italy, dated 1880, 1889, 1891 - 1897, 1905, 1915, 1919, 1922, 1925, together with a cover from London to Palerno via Marseille, Ap 27, (18)69 fixed with a 6d pl.8 (SG 109 CV £140), all in a display book. *Used, scarce.* (20)

\$150



part

1572*

Japan, April 1871 imperf. issues, on thin native laid paper, 48 mon brown (2), 100 mon blue (3), 200 mon red (3), 500 mon green (5), each described on individual folder with plate number references and estimates, most with generous margins (SG 2, 3, 4, 5, 6, 7, 8) all different by colour and plate (CV £5000+). *Mostly fine used.* (13)

\$1,000

Each stamp on original auction cards with lot numbers.



part

1573*

Japan, April 1871 imperf. issues, on native wove paper, 200 mon red, as perforated issues on thin laid paper (illustrated), 1/2 sen brown, 1 sen blue, 2 sen red (2), 5 sen green, each described on individual folder with plate number references and estimates, most with irregular perforated margins (SG 2 var, 17, 19, 21, 22); together with 30 sen black (4, one perf. 11.5, rough perfs no syllabics, illustrated) various papers (cf. SG 60); 1873 4 sen red, (2) (SG 46); 1875 bean goose 12 sen red, 15 sen lilac, 45 sen red (2) (goshawk, one illustrated), (SG 61-63, CV £700), 45 sen red (2), (SG 111, CV £600) (illustration). *Mostly fine used, several rare.* (16)

\$750

Each stamp on original auction cards with lot numbers.

1574

Malaya, Labuan, on eight album leaves, issues from 1894, (SG 51-55, 57) as CTO; North Borneo pictorials O/P Labuan (12) 1894-6 (no 12c) mostly postal used (3 are CTO with black bar cancellations); 1895 set of O/P on North Borneo 4c - 40c (SG 75-79) (8 as extras, one only CTO), similar 25c - \$1 (SG 80-82), 50c a CTO; 1896-1898 issues (18) with Labuan O/P on North Borneo with extras mostly postally used, a few CTO, (SG 83 - 101); 1899 surcharges incomplete all used (SG 102-107, 109-110); a few (6) latter issues including (2) Straits Settlements used in Labuan. *Used.* (69)

\$150

Ex Malcolm S. Burrells Collection.



1575*

Malaya, Sarawak, various used on two album leaves, 3c brown/yellow 1869, good used with bar cancel (SG 1) (illustrated), 3c brown/yellow 1871 (5), together with varieties stop after three and other minor varieties (3), together with 1875 issues 2c (1), 4c (3), 6c (2), 8c (4), 12c (3), (SG 3-7). *Used most with clear postmarks.* (23)

\$150

Ex Malcolm S. Burrells Collection. First previously from Stanley Gibbons Limited, priced £130 purchased c.1990.



part



1576*

Malaya, Sarawak, various used on five album leaves, 1888 set to \$1 with additional shades as per SG, with additional 3c with postmark Sarawak 10 Jul 9 (sic); together with 1889 surcharges with extras (SG 22-26) with varieties, and a block of 6 1891 5c/12c with cds Sarawak 20 Mar 96 (SG 25a) no stop after c (CV £1080) (illustration); together with a 1891 large block of 16 (4x4, with LH side selvage) (SG 26) (CV £5200) MUH for 13 examples, 3 fine mint (illustrated). *MUH, mint and used most used with clear postmarks.* (48)

\$500

Ex Malcolm S. Burrells Collection.



1577*

Malaya, Sarawak, 1889-1892, 5 cents on 12 green and blue, no watermark, perforated 14 surcharged in black 5 with 'c' omitted, dated 16 Mr 1891 (SG 26b). *Used and very scarce item.*

\$380

Ex Malcolm S. Burrells Collection. Previously from Stanley Gibbons Limited, purchased for £400 on the 23.4.1985, lot includes a B.P.A. Expertising Limited London Expert Committee on the 21 Jun 1980 No.5306.

1578

Malaya, Sarawak, various used on four album leaves, 1892 1c/3c brown/yellow with additional large block of 12 (3x4) stone 1, left pane B, one a variety of long tail R, with cds Sarawak, 10 Oct 99, with additional 1895 set (SG 28-31) with extra 2c and 8c; with additional plate proofs for 2c imperforated violet and brown-red; 1899 surcharges (SG 32 [2], 33 [2], 35); 1899 set with extras and shades to 50c, (SG 36-46, 48 [mint] 49); 1918 set to \$1 with shades (SG 50-61, 62 mint). *Mint and mostly fine used some with clear postmarks.* (65)

\$200

Ex Malcolm S. Burrells Collection.



1579*

Malaya, Sarawak, 1896 (3 Nov), combination piece with 1895 2c brown-red, perf. 12 1/2, tied by Sarawak CDS and 1892-1899 Straits Settlements 8c ultramarine with Singapore CDS 'No 9, 96', (paying international postage), this with minor stains with part Paris CDS in red at left; together with another combination piece with 1871 3c brown/yellow, perf. 11, tied by Sarawak CDS '28 Jan 81' to a Straits Settlements 10 cents /12c ultramarine (SG 45), tied by cancel in transit at Singapore (Straits Settlements stamps were required on overseas mail); this is a scarce and attractive item and an early usage of the Straits Provisional. *Used.* (2 items, 4 stamps)

\$200

Ex Malcolm S. Burrells Collection. Previously from Stanley Gibbons Limited on card with description, priced £125 purchased on the 28.5.1990; the second item acquired from Stanley Gibbons Limited and cost £160, it was purchased 9.7.1992.



part

1580*

Malaya, Sarawak, various used on ten album leaves, 1932 set to \$1 (15) (CV £150); 1934 set to \$10 (26) (CV £350) plus extra blocks; B.M.A. set to \$4 (CV £230, \$3 illustrated); Sarawak 1945 B.M.A. overprint set to \$4, complete each cancelled by boxed four-line "VICTORIA/DEC. 24TH/1846-1946/LABUAN" handstamp, (this slogan handstamp was only in use between 24th Dec. 1945 and 31st Jan. 1946) (18 different) unused and rare (\$4 illustrated); other issues include Centenary, Royal Wedding UPU, Crown Colony set to \$5, 1950 pictorials and almost complete set to (SG 146-203). *Mostly used unless noted.* (145)

\$200

Ex Malcolm S. Burrells Collection.



part

1581*

Malaya, Straits Settlements, 1867 selected issues, 8c/2anna yellow, Singapore post mark, 12c/4anna green, 24c/8anna rose, 32c/2anna (SG 6-9), together with India 1854 half anna blue and 2 annas green with Singapore surcharge (SG Z60, Z64), (CV £1000). *Generally fine used.* (6)

\$500

Ex Malcolm S. Burrells Collection. Several previously from Stanley Gibbons Limited such as the 12c/4anna for £200 on the 7.2.1983; the 2c India used in Singapore for £45 c1984.

1582

Malaya, Straits Settlements, an extraordinary collection housed in a Stanley Gibbons 'Exeter' album No.2898, used (unless noted) issues from 1867 various O/P and denominations (5), India issues for Singapore 8 pies and 1 anna and 8 annas (SG Z71, Z78, Z80); 1867-1872 with duplication and colour varieties (31) values to 96c (4), (SG 11-19); range of O/P '10' '10 cents' (11); 1882 new designs and colour changes (9); 'two cents and 2 cents' (4); 1883-1891 2c - 96c with extras (30), (SG 63 - 71); '4 cents' (3) and '8 cents' O/P (SG 73 [3], 75 [2]); 1884 surcharges 'two cents' on 5c, (SG 77), various 'Three cents' O/P on 32c (SG 83, 94) (5); 1898-9 O/P 3c on 5c (1) (SG 84); 10c/24c (4), 30c/32c (6) (SG 86-87); 4c on 5c, on 8c, on 5c carmine; others 1892 O/P mostly One Cent (9), 1892-1899 1c - 50c with extras (17); KEVII 1902 to \$2 with extras (21); 1903-6 set to \$5 with extras (20); 1906 used O/P on Labuan to \$1 (8), KEVII set (26) 1906-1912 to \$5 (3) (SG 153-167), extensive range of fiscal cancellations on KEVII various issues (40) many at \$5; KGV 1912-1923 issues to \$5 (3), with duplication (50); red cross (3, 2 are mint), (SG 216-217); 1921-1933 issues and varieties (35) to \$5; assorted fiscal cancellations (52) to \$5 (10, one a block of 4); Malaya-Borneo Exhibition varieties mint and used to \$1 several in strips, various watermarks (24); Silver Jubilee set; 1936 KGV set to \$5 (15) (SG 260-274); Coronation set; 1937-1941 KGVI sets (23) to \$5 (SG 278-298); 1924-1926 two (2) Postage Due sets (SG D1-D6), in all a high CV; lot also includes two loose leaves with various mostly used (65). *Mostly used, a few mint.* (several 100).

\$1,000

Ex Malcolm S. Burrells Collection, several examples are from Stanley Gibbons, London.

1583

Malta, a collection of issues housed in 2 spring-back albums and a quantity on small Hagners and loose sheets, QV issues various on Hagners, GB used in Malta many on pieces, many with date stamp and A25 post-marks noted 1865-1873 4d red and vermillion (SG Z48-9, CV £200+) (11 stamps) and complete plates 7-14, others 2 1/2d GB mauve and blue similar with most on pieces (SG Z38, Z40), (13), also 2d blue plates 13 (pair) and 14 on pieces (SG Z34), and 1/- (2), one on piece (plate 4) (SG Z74, 78); other used with A25 postmark on French and Italian stamps; QV includes values to 5/- mint (noted SG 18-19, 27-28, 30, 33-34) and others; range of EVII mint to 1/-, other short sets noted for KGV, KGVI, 1922 set to £1 (CV £160); 1956 QEII set to £1, (CV £130), wedding to £1, 1925 Postage Due set to 1/6 (CV £60); album collections mixed from QV appear relatively complete from 1948 - 1994; lot includes a few FDCs. *Mostly MUH, mint and used.* (100s)

\$300

Ex Dr C.Haymes Collection.

1584

Malta, a used collection housed in a clip lock stamp album, stamped mounted on Hagner pieces, lot includes (3) pieces of Great Britain stamps postmarked at Malta as a 9 (2, dated 1871) includes SG Z34 (a pair), 49, 59, 79); also (SG Z39, 40[2]), 1885 issues with shades (SG 20-30) noted (SG 30, 5/- [2]); selected issues after 1899 noted 10/- (SG 35); Edward VII issues to 5/-, a few of KGV to 2/-; limited part sets of other KGV, noted Silver Jubilee set; 1938, 1948 some QEII but KGVI set to 10/- complete, but from 1957 appears nearly complete to 1986. *Used.* (200+)

\$150

Ex Malcolm S. Burrells Collection.

1585

Monaco, an extensive range of MUH and used issues stored in a stock book with much duplication, issues to 1970s, noted used, high value issues SG 406 (5 used), 407 (23 used), 1955 1000 fr. SG 511a (11, used, these with CV £935), 1959 airmails of Royal Wedding SG 615 (5), 616 (14), similar air issues 20 fr. 1966 SG 860b (3, CV £150); many others used some as blocks; other stock books (4) containing Finland 1875-1975 noted SG 79, 81, 488 etc); Greenland (77) from 1950 some are large blocks of 8 MUH, noted SG 44 (3 mint); Iceland a small group of (27 Mint and used); United Nations a range of issues mostly mint - MUH from 1948-1960s; Luxembourg 1874-1980s mostly MUH from 1960s, others used and an extensive range of issues from Latvia, Lithuania and Liechtenstein mostly mint and used, several collections all are mostly used a few mint in all five stockbooks containing a few useful pickings, all are neatly laid out within the stock books. *MUH, mint and used.* (100s)

\$180



part

1586*

Netherland East Indies, an extensive collection on leaves in mixed condition in a red New Age loose leaf album, issues from 1864, (SG 1 imperf., 1 mint, 3 used; 1868 perf. issue SG 2 1 mint (illustrated CV £1700), 4 used); 1870-1888, much duplication, 2.50g (includes block of 4 mint CV £520); other mint and used various perfs (in all 135 stamps); 1883 and 1892 mint and used (2.50g mint illustrated SG 101 CV £200); 1900 O/P series with duplicates, including 2.50 (SG 117, 4 mint, 1 pair and 2 singles); noted rare 1902 surcharge 1/2c inverted on 2c another with surcharge double (with certificate from the BPA in 1949); 1902 series mint and used with duplicates, noted 2.50g grey (4 mint), 2.50g grey on blue (block of 4 mint CV £680); Java O/P set mint and used, including a block of 6 with O/P Java on only 2 stamps, also set of Java inverted O/P mint and used 2.50g mint (SG 159a £2250, Scott 98a) (illustrated); 1908 O/P set mint and used (some inverted) with varieties some as pairs noted 2.50g with inverted O/P (SG £2500); 1911 official stamps used; extensive range of issues many in blocks with duplication and varieties, including set 1923 Queen's Jubilee to 5g mint and used, noted 12.5c vertical pair imperf. between very rare

(illustrated); 1921 complete Marine Insurance set; 1922 set O/P complete; appears complete with extras to 1948 with several covers; collection includes Netherlands New Guinea to 1962. *MUH, mint and used.* (many 100s)

\$5,000



1587*

New Guinea, surcharged stamps from Marshall Islands, 5mm apart for GRI and surcharge, 1d on 40pf. black and carmine, single example, (SG 56j), (CV £13,000). *Mint and very rare.*

\$500

Ex B.J. Hibbard Collection. Robson Lowe describes this error of value (p.377, item v)



1588*

New Guinea, N.W.Pacific Islands overprint on 5/- kangaroo 3rd watermark, perforated OS (SG 13, CV £1300). *Used and very rare.*

\$200

Includes a Ceremuga certificate, dated 13.3.2004.



1589*

New Guinea, 1939 Bulolo Goldfields two pounds bright violet, (SG 204); five pounds emerald green, (SG 205). *Fine used.* (2)

\$500

Ex B.J. Hibbard Collection.



1590*

New Zealand, a cover to William Colenso, Auckland from Napier to Auckland fixed with a 2d pale blue, full face head type, perf. 12 1/2 comb from a worn Plate 1 (white face) dated De(cember) 17 1864 and stamped Dec 19, 1864 Auckland. *Fine used.*

\$100

William Colenso was born in Penzance, Cornwall, he was the cousin of John William Colenso, bishop of Natal. He trained as a printer's apprentice then travelled to New Zealand in 1834 to work for the Church Missionary Society as a printer/missionary. He was responsible for the printing of the Maori language translation of the New Testament.

By July 1835, he had printed and bound 2,000 copies of the Epistles to the Ephesians and Philippians, as well as printing addition, multiplication, and shillings-and-pence tables for the schools. Then by 5 January 1836, he had composed and printed 1,000 copies of St. Luke's Gospel, as well as further material for the schools. In July 1837, Colenso printed the first Maori Bible comprising three chapters of Genesis, the 20th chapter of Exodus, the first chapter of the Gospel of St John, 30 verses of the fifth chapter of the Gospel of St Matthew, the Lord's Prayer and some hymns. During the year ending 31 December 1840, he had printed 10,000 Catechisms, 11,000 Psalms, other religious texts and material for the schools; as well as 200 copies of the "Government Gazette" for the colonial government.

He was ordained a Deacon on 22 September 1844 following his theological studies at St John's College, which was then located at Te Waimata mission.

He was an avid botanist; detailing and transmitting to Kew Gardens in England previously unrecorded New Zealand flora. He assisted Joseph Dalton Hooker when he visited the Bay of Islands from 18 August to 23 November 1841. In 1866, he was the first New Zealander to be elected as a Fellow of the Royal Society. He wrote several books, and contributed over a hundred papers to scientific journals.

He married Elizabeth Fairburn on 27 April 1843. William and Elizabeth Colenso worked at the Waitangi (Ahuriri, Napier) Mission from 1844. In the 1840s, from his mission station in Hawke's Bay, Colenso made several long exploratory journeys through the central North Island in the company of Maori guides with the aim of reaching the inland Maori settlements of Patea, in the Taihape region, and converting them to Christianity. His travels took him through trackless forest, over the high Ruahine Range and across the Rangipo Desert and past the mountains of Ruapehu and Tongariro to the shores of Lake Taupo. In doing so he contributed greatly to the European exploration of the central North Island. One of his journeys, between December 1841 and February 1842, was across the North Island and up to the Kaipara Harbour.

From 1845, Colenso undertook lengthy journeys every spring and autumn. In 1847, he travelled to Taupo then south to pass by the Tongariro and Ruapehu mountains. He visited regularly the Wairapara and Hutt districts, where he was frequently at odds with the European lessees of sheep and cattle stations such as Kelly, McMaster, Grindell and Gillies. In 1845, about a dozen sheep and cattle farmers had leased large areas of land from local Maori by mutual agreement. Maori owners regularly raised the annual lease fee to the annoyance of the farmers. The farmers regularly pressed Maori to sell land. Many younger chiefs were keen sellers but were thwarted by conservative older chiefs. The farmers also paid Maori to assist in building roads to help economic development. Colenso regularly counselled Maori against selling any land or helping build roads which he claimed would be disastrous for them. Colenso was especially vociferous about the farmers living with Maori women as their wives, without a Christian marriage.

Colenso also had strong views about drinking and horse racing which were a regular part of colonial life that Maori as well as settlers enjoyed. This put him in opposition to a wide range of New Zealanders. In 1847, Judge Chapman, Doctor Featherston, the bank manager McDonald and the merchant Waitt visited the Hutt valley. There was criticism of what was called "the malicious interference of Colenso".

His standing in New Zealand colonial society and the Church Missionary Society, along with his fervent hope of ordination, was lost when it was discovered that he was the father of a son (Wiremu) by Ripeka, the Maori maid of his wife, Elizabeth Fairburn Colenso, in May 1850. In November 1851, Colenso was suspended as a deacon and dismissed from the mission in 1852. In 1853, he was convicted of a technical assault over an argument about Ripeka and their son.

Following a long wilderness period during which he continued his botany work, he took an active role as a local politician in Napier. He represented Napier as the Member of Parliament for the Napier electorate from the 1861 by-election to 1866, when he retired. In 1871, Colenso was the speaker at the Hawkes Bay Provincial Council when Ngati Kahungunu had been persuaded by farmers, the Russell Brothers, that they could get their land back in what came to be known as the Repudiation Movement. Their chief Henare Matua had already pronounced all land dealing with both the crown and private sales illegal. The brothers persuaded Maori that legal action against large land owners such as Donald McLean would succeed. Colenso advised Maori not to take a legal path that would leave them deep in debt. Lawyer and later Government Native Minister John Sheehan who spoke fluent Maori, acted on behalf of the Repudiation Movement. Matua attempted to stand as an MP but lost and the movement, deep in debt, petered out.

He died in Napier in 1899, leaving two sons and a daughter. His son from Ripeka, Wiremu/William, left New Zealand for Cornwall, married a cousin and lived in Penzance until his death. His son from Elizabeth Fairburn, Ridley Latimer, attended Cambridge University, and finally settled in Scotland. His daughter Frances Mary married William Henry Simcox and settled in Otaki, New Zealand. Neither of his sons had surviving children - Frances had nine.

Today in his memory there exists 'The Colenso Society' which was founded in 2010 by academics and historians across New Zealand. The Colenso Society aims to "promote the study of the life and work of the Reverend William Colenso FLS FRS".

(source Wikipedia).

1591

New Zealand, collection in three albums, two contain MUH and mint, the third used, the collection is incomplete and mostly commences from 1936, 1936 definitive set complete mint with extras, healths include most M/S, NZ Govt. Life Insurance, Peace, KGVI mostly complete mint, noted 2d error surcharge (SG 763b CV £130), also QEII coils, QEII to 1984, used includes Officials, and scattered issues from QV to 1970. *MUH, mint and used.* (100s)

\$120

Ex Malcolm S. Burrells Collection.

1592

New Zealand, extensive accumulation spread over three various albums including hingeless Seven Seas leaves in a cliplock stamp folder with issues from 1953 - 1979 including QEII to 10/- mint, noted health M/S, 1960 pictorials to £1 etc, appears complete missing decimal arms to \$10; another SG album with scattered issues only to 1954 mostly used; another a large Lighthouse stock book of 1000s of used with much duplication, from QV to decimal, noted 100+ 1d red 1909 toned gum issues in large blocks mint/MUH; New Zealand Post year book 1989, empty year books (7). *MUH, mint and used.* (1000s)

\$300

Ex John Jackson Collection.



1593*

New Zealand, 1958, block of 4, 2d on 1 1/2d lake brown QEII, with surcharge on issue with stars, (SG 763b, ACS 327). *MUH*. (4)

\$300

Ex John Jackson Collection, from Noble Numismatics Sale 102 (lot 2370).

1594

New Zealand, New Zealand, 1958, 2d on 1 1/2d lake brown QEII, with surcharge on issue with stars, (SG 763b, ACS 327). *One MUH, others (2) fine used*. (3)

\$150

Ex John Jackson Collection and Noble Numismatics Sale 102 (lot 2371)



1595*

New Zealand, 1960, 9d flag, missing red on stars which has shifted into the blue on the flag, Union Jack red shift to right, (ACS 352); 5d daisy block of 4 with misplaced perfs and double perfs between rows, (ACS 348, CP O7aY [\$350]); another single stamp with yellow shift well to the left. *Block MUH, others mint*. (6)

\$100

Ex John Jackson Collection and Noble Numismatics Sale 102 (lot 2372).

1596

New Zealand, clip lock folder with slip case with an extensive range of booklets from 1970s - 1990s (FV over \$450); a large extensive accumulation of KGVI - QEII in a large plastic bag of pre-decimal MUH (a very few on toned paper) but almost all in blocks or part sheets etc (1000s). *Almost all MUH*. (lot)

\$250

Ex John Jackson Collection.

1597

New Zealand, extensive collection on over 100 Leuchtturm hingeless album leaves all in a very large box with issues with M/S including special commem issues, blocks singles, many as descriptive issues from 1936-2000s with much duplication, others on large Hagner sheets together with about 200 unused hingeless leaves from 1953-2000s with some duplication (high FV), noted mint 5/- (2), 10/- (2) QEII, Health M/S, also a used collection on leaves 1953-1986, another used lot in old stock book. *MUH, mint and used*. (100s)

\$400

Ex John Jackson Collection.

1598

New Zealand, collection on Seven Seas leaves in a cliplock album of MUH and mint issues 1979-1991 and extra leaves to 1994, together with collector packs, 1974, 1977, 1978, 1980, 1983, NZ presentation packs, with duplication and FDCs (100+), together with some Australian FDCs and few other world covers and stamps. *MUH, mint used*. (100s)

\$100

Ex John Jackson Collection.

1599

New Zealand, an accumulation as a collection of issues MUH, mint and used housed in 3 white clip-lock folders with Hagner sheets within, MUH 1970s-1990s, with values to \$5, over \$400NZ, lots also include used of similar and earlier period, and a number of part sets noted pre-decimal geyser set to £1, QEII set to 10/-, with some low value mint blocks, QV, EDVII, KGV and KGVI issues, some useful pickings throughout, noted blocks M/S etc, lot also includes a few FDCs. *Mostly MUH, mint and used*. (100s)

\$200

Ex Dr C.Haymes Collection.

1600

Norfolk Island, extensive collection of MUH issues in all types M/S, booklets, sets, blocks etc from 1947-2012 stored in two large maroon Lighthouse stockbooks, together with in another two smaller stockbooks pre-stamped covers, airletters unused and a range of used Australia decimal c.1980. *MUH, used*. (100s)

\$200

Ex Monsignor Wayne Peters Collection.

1601

Norfolk Island, in a large box, small Post Office year books (2 of each year), 1992-2008; local postage stamp booklets with duplication (30); normal issued booklets (6), aerogrammes (10), stock books (3, one large, two small) and loose stamps with mint/MUH and some used stamp issues from 1948 with values to \$5, lot also includes M/S, FDCs mostly pre-decimal, noted 2 official FDCs, pre-stamped envelopes, includes covers for Anzac Day 2000 with signatures of Edward Kenna VC, and Keith Payne VC, numbers 286 and 287 etc.; Nauru, collection of issues in three stock books and other issues in glassine packets, a few small sets from Fiji and the Pitcairn Island; all with a large FV. *Mostly MUH.* (lot)

\$200



part

1602*

North Borneo, an extraordinary collection housed in a Stanley Gibbons 'Exeter' album No.2898, used (unless noted) issues from 1883, (SG 3 [CV £190]); 1886-7 series (SG 23, 25-27, 30, 32), 4c pink block of 6 mint with top middle stamp one cent in error, (SG 26, 26d, CV £325 for strip of 3, illustrated); 1888-1902 series (SG 36-40, 42a [imperf pair], 42-45, 47, 49, 50(2), [most with black bar cancels]); 1891-2, various surcharges, (SG 55-56, 57 a block of 20 4x5 [illustrated], 63, 64 [2]), 1894 issues (17) various with duplication, perf. varieties etc, most postal used, some scarce); various postcards (6, 2 illustrated and described) c.1893-4, one with 1894 3c blue reply postcard (still attached) franked with a 1c 'Protectorate' overprint issue (SG 127) from Sandakan, dated 25 June 1909; another postcard 1893 1c orange to Germany with additional franked 2c brown tied with Sandakan CDS, another similar 1904 to Ulm Germany; other postcards with 1c/8c 1892 (2), 4c/8c 1895 Provisional to Amsterdam; 1894 \$1, \$2 (SG 83, 84, CV £105); 1895 surcharges normal usage (SG 87-91 CV £110); several 4c surcharges 1899; series 1897-1902 various perfs etc to 18c (22); 1901-1905 'Protectorate' series of O/P to \$1 with extras (21, all normal usage, except one bar cancel); 1909-1922 series complete mint and mostly used (17), (SG 158-176) with extras also (SG 177-182, 182 illustrated mint this with CV £180) (7), high CV; 1916 red cross 2c - 25c (7), vermilion shade (SG 190, 192-196, 201 illustrated this mint CV £375); 1918 (Aug) 'Red Cross' set complete of 17 to \$10, (SG 214-234 CV £1900) with extras (9); 1918 (Oct) red cross set to \$10 complete set of 17 (SG 235-252, CV £1100) with extras (4); 1922 Exhibition (3); 1925-8 series to 50c (14) 10c a used pair; 1931 set (SG 295-299, 301, total CV £170); 1939 set to \$1; War Tax (2); 1945 BMA set to \$2 (15), (SG 303-316 high CV); 1947 set to \$5 (15) complete; a good range from 1948 - 1965 Sabah issues with values to \$10, and a small range of Postage Due issues to 1930 (10) (SG D5-D61). *Mostly used a few mint.* (100's)

\$4,000

Ex Malcolm S. Burrells Collection, the SG 57 block from Stanley Gibbons, 4 March 1983 for £400; The postcards from Stanley Gibbons for a total of £400 cJanuary 1984; The (17) Red Cross set from Stanley Gibbons for £600, 4th March, 1983, the second red cross set on the same day from Stanley Gibbons for £800, probable others also came from Stanley Gibbons.



lot 1602 part

1603

Norfolk Island and Papua New Guinea, collections in one blue album, Norfolk Island from 1948-late 1970s, all mint/MUH, appears complete with the occasional extra; PNG an about complete collection used from 1952 to £1, includes 1/7 cattle, 10/- Rabaul, £1 QEII, incomplete to mid 1970s, includes postal charges (SG D2-6 mint/MUH CV £50), 1960 set used; together with an envelope of FDCs etc. *MUH, mint, used.* (approx 250)

\$100

Ex Malcolm S. Burrells Collection.

1604

Oceanic countries or territories, Papua New Guinea, Cocos (Keeling) Islands, Kiribati, Christmas Islands, Pitcairn Islands, Australian Antarctic Territories, Norfolk Islands, in Chinese stock book albums (12), some FDCs in PO packs, all in large carton. *Used and MUH.* (100s)

\$300

1605

Pacific Ocean, a green Lighthouse stock book filled with a wide range of mostly MUH issues from PNG, AAT, British Antarctic Territory, New Zealand, Japan and including the following islands Cook, Penrhyn, Tokelau, Samoa, Niue, Kiribati, Tuvalu, Fiji, Gilbert Islands, Pitcairn, Norfolk, New Hebrides, New Caledonia, Wallis and Futuna, Tonga, Solomon, Palau etc. *Mostly MUH with a few used.* (100s)

\$150

1606

Papua, 1917 surcharged set one penny on various denominations a set of 8 (SG 106a, 106a, 107 - 111); together with one penny on 2 1/2d block of 8 with CA and CB monograms on bottom selvege, a similar group of 2 x 4 blocks of one penny on 4d with CA and CB monograms. *Singles mint, blocks MUH.* (24)

\$100

Ex B.J. Hibbard Collection.

1607

Papua New Guinea, a green stock book of mostly decimal issues, many in pairs or blocks from 1960s-1980s, with values to 2 kina, a good range of types. *All appear as MUH.* (100s)

\$80



1608*

Papua New Guinea, 1995 90t Tourism MUH block of 4, (missing 1k overprint), rare only one sheet known, (cf.SG 753-4, only reported with surcharge). *MUH.* (4)

\$150

Ex Status International, Auction 140, 18th June 1997 (lot 1543). With certificate from Kiamoo Nominees Pty. Ltd.

1609

Papua New Guinea, PNG year books 1992, 1993, 1995 Post office pack; two (2) stock books of issues some as pairs or M/S, lot also include some additional issues of the 1990s in glassine envelopes. *Mostly MUH.* (lot)

\$120



part

1610*

Papua New Guinea, a large accumulation of FDC from 1952 (noted set to £1 on cover) (illustrated), mostly issues of the 1960s-late 1970s with some duplication (over 200); together with 1937 Coronation registered FDC from different countries (approx 55). *Used.* (approx 250)

\$100



part

1611*

St. Vincent, KGV 1913-1917 Specimen set to £1 (£1 illustrated), all O/P 'SPECIMEN', (SG 108s-120s, CV £250); British Virgin Islands as Virgin Islands, 1d green (2), 6d, 1/- (illustrated) (SG 1-3, 14). *Mint.* (17)

\$150



1612*

Singapore, 1969 150th Anniversary of foundation set to \$10, MUH and used (CV £495), together with M/S (illustrated) (CV £375) and FDC (2 including M/S CV £400, illustrated) (SG 121-126, MS127). *MUH, used.* (15 items)

\$300

1613

Singapore, collection housed in a stamp album as well as loose stamps in envelopes, includes MUH KGV set to \$5 (SG 1-15 CV £180); QEII 1955-9 set to \$5 mint (SG 38-52, CV £130); some blocks of 4 of commem issues; part 1962 set to \$5 mint, various M/S; together with part sets used from 1948, noted 1949 wedding pair, some issues as block of 4 or M/Ss, various issues MUH and used to 1970s some as strips blocks from 1968, birds, fish mostly in envelopes; Post cards of Straits Settlements (2), QV 3c another 2c/3c c.1892; Sabah and Malaysia and States quantity with duplication used as QEII blocks strips etc c.1965. *MUH, mint and used.* (100s)

\$200

Ex Malcolm S. Burrells Collection.

1614

South Africa, in a red stamp album, a used collection of incomplete sets noted KGV issues for 2/6, 5/- and 10/-, most issues 1950s-1970s, many other issues in large envelope; album also includes South West Africa, many as joined pairs such as 1931 issues to 1/-, SWA O/P on South Africa; another red album of Switzerland with a good range of types, noted scarce issues 1915 'Pro Juventute' 5c and 10c (SG J1a, J2, CV £134), 1916, 1917, 1918 (SG J3-J10, CV £358), others for 1920, 1921, 1922, 1923 etc., 80c on 70c (SG 301), 75c air (SG 320a, 322a, 326 £280), O/P (SG 362-3) etc, with extras in packet. *Mostly used.* (100s)

\$150

Ex Malcolm S. Burrells Collection.



part

1615*

South Africa, Cape of Good Hope, triangle issues, 1d imperfs various shades (6), 4d imperf shades including a joined pair (illustrated), (10), 6d mauve (2), 1/- emerald green (2), (best of last two illustrated), and QV post card, 10 Sep [18]92. *Used.* (21)

\$300

Ex Dr C.Haymes Collection.



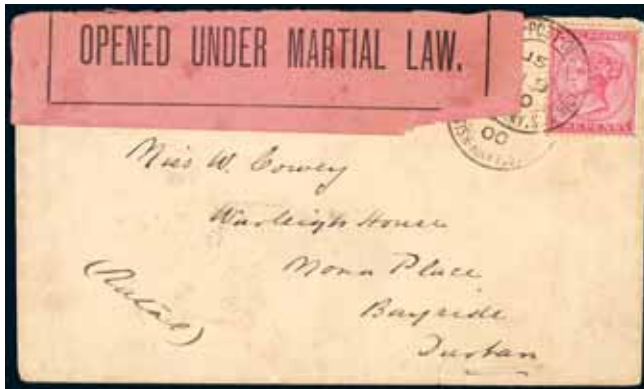
part

1616*

South Africa, Natal, 1877 One 'Postage Halfpenny' on 1d yellow with surcharge inverted, (SG 91a CV £375) (illustrated); together with Cape of Good Hope 1893-1900 set to 5/- with extras (SG 58-69); together with South Africa, KGV incomplete set to 10/- with extras as shades to 1/- value, (SG 3-14, 16) and a block of 4 used 2d, p.14x13.5 (SG 34b); covers (2), both to Uppsala in Sweden, one from Southern Rhodesia and the other from South Africa, 1950 and 1947). *Used.* (54)

\$100

Ex Velvet Collectables Auction (lot 1269) for Natal and Cape of Good Hope groups.



part

1617*

South Africa, Natal, cover with postmark 'British Army South Africa, field Post Office' fixed with 1d red rose (SG 99), posted Au 9, 00 to Durban Au 10, 00 with attached sticker 'Opened under Martial Law' (illustrated), together with Rhodesia, stamps of the British South Africa Company Cape of Good Hope stamps O/P 'British South Africa Company' set 1/2d to 1/- (SG 58-64 CV £325), (SG 64 1/- illustrated, clear postmark). *Used.* (8)

\$120



part

1618*

South Africa, Natal, KEVII specimen set of from 5/- to £20 all overprinted 'SPECIMEN' (£5, £10, £20 illustrated) (SG 140-145bs, CV £1295). *Very fine mint, trace of hinge only.* (6)

\$250



part

1619*

South Africa, Natal, 1902, twenty pounds as private perfin, two used, one mint (illustrated), (SG 145b, very high CV). *Mint, used, minor paper toning.* (3)

\$200

1620

South Africa, Natal, a wide range of issues, Chalon head issues (22) including O/P, other QV issues to 5/-, EVII issues to 10/- etc; Transvaal, various issues with duplication, on album leaves and Hagner cards, including First and Second Republic various values including O/P, mint and used to 10/- and £5 mint copy, EVII to £1, assorted Revenue stamps some from Cape of Good Hope etc, British South Africa Company values to 5/-, 1900 O/P of ERI and VRI on wagon issues noted 10/- block of 4, a wide range, Orange River Colony selection etc. *Mint and used.* (100s)

\$200

Ex Dr C.Haymes Collection.

1621

Space thematic collection, an extensive accumulation of issues on the theme of Space including flight (aeroplanes etc), many in separate packets, some on Hagner cards, all in a folder, includes covers, M/S, etc. *Mostly MUH, some used.* (100s)

\$180

Ex Dr C.Haymes Collection.

1622

Spain and Spanish Possessions, collections and accumulation stored in two stockbooks and a cliplock folder filled with Hagner sheets this folder containing an extensive range of MUH issues including M/S and definitives (noted 1976 Carlos I set complete) from 1965-1990; the stockbooks contain issues from 1855 mostly used and some MUH, noted partial Columbus set etc. much duplication for the used earlier issues; the third stockbook contains issues of Zaragoza and various Spanish colonial issues. *MUH, mint and used.* (100s)

\$150

1623

Sweden, an extensive range of MUH and used issues stored in two stock books with much duplication, issues from 1858-2012, noted used, SG 23a, 26, 33, 199 (4), etc., also noted MUH issues, recent M/S, booklets, cinderallas etc., the majority are used all are neatly laid out within the stock books. *MUH, used.* (100s)

\$150

1624

Switzerland, an extensive range of MUH and used issues stored in two stock books with much duplication, issues from the 1854 imperfs to 21st century, noted used, SG 48 (3), 49a (3), 50, 1923 airs various values to 2 Fr. noted SG 319 (mint), 320a (used), 325a (mint), 326 (used), also noted 1935 air surcharges 40c on 20c and 40c on 90c both used SG 362, 363, also SG 346 used, 385, etc. a range of Pro Juventute issues; collection all mostly used a few mint; also included a wide range of issues from Denmark; all included in one of the same stock books and a similar selection of issues from Denmark 1875-1974 noted SG 86 (2), SG 214, mostly used but some are MUH, in another a third stock book an accumulation of issues from Norway from 1872 - 1960s and some officials etc, in all three stockbooks, a few useful pickings, all are neatly laid out within the stock books. *MUH, mint and used.* (100s)

\$150

1625*

Tonga, an extensive collection on Hagner sheets in spring back folder with much duplication of issues from 1886, (SG 1-4,9) (12), facing head with assorted O/P (34) including SG 30 (2), together with GFB (3), set of 1897 series to 5/- with extras, 1938 Salote accession (2 sets), 2d O/P 2 sets mint (SG 64-70), UPU, 1951 sets (2), 1953 sets (2), O/P etc, lot also includes quantities of round and shaped issues including SG O17, also Papua New Guinea MUH, 1952 set to £1, 10/- bird (illustrated), 10/- Rabaul, £1 queen all specimen O/P, British Solomon Islands, KGV set to 5/- crown CA watermark (SG 22-36) mostly MUH; Postage Due 1940 set MUH (1/- toned) (SG D1-D8); Nauru, includes O/P to 10/- (2/6-10/- gum toned); multiple freighter set to 5/- and decimal \$1, all with extras and O/P, with pictorials to 5/- with extras and sets 1970s; New Guinea 1937 coronation in sheets of 30; Nauru similar in blocks of 4, also Nauru building O/P in strips; together with lot is a mint sheet folder Nauru decimal issues in part and full sheets M/S with much duplication; and a clip lock folder of KGVI and QEII British Solomon Islands (100s) to 2/- on 9 Hagner sheets. *MUH, mint and used.* (many 100s)

\$300

1626

USA, stamps for the Games that never were, American Olympic Committee Helsinki 1940 Games, no values, blue block of six, red block of five with left selvedge with date 1940, green block of seven with bottom selvedge 'All Competitors In The Olympic Gam.'; Centenary of Gibraltar Garrison 1914-2014 postal cover with a Gibraltar 12P stamp and a Great Britain 1ST stamp of Private William Cecil Tickle; also banknotes, Germany, Weimer Republic, Reichsbanknote, First issue, 100,000 mark, 1 February 1923, O.11368517 (P.83a), Second issue, 20,000 mark, 20 February 1923, F-MB 095831 (P.85); Great Britain, British Armed Forces, Special Voucher 4th Series (1962), one pound, K/I 664940 (P.M36); and a medal, Scotland, Pollokshaws Royal Arch Lodge No 153, undated, in bronze (27mm). *Fine - very fine, the stamp blocks MUH.* (5 + 3 stamp blocks)

\$50

1627

World, thematic collection of dogs in a stock book (approx 100) together with album of mint and MUH stamps from Jordan, mostly 1980's (approx 100); Concorde aircraft memorabilia including folder, pen and stationary (5 items). *Mint, MUH and uncirculated.* (approx 205)

\$80

1628

World, an extensive range of stamps, some in exchange books (5), old stock books of world stamps arranged alphabetically (5) and Chinese type stock books (5) with many MUH issues many in blocks or part sheets mostly lower denominations c.1960-1970s from Norfolk Island (values to 10/- or \$1), Samoa, Pitcairn Islands, British Solomon Islands, PNG, British West Indies islands, Tokelau, Tonga (many as sets of odd shaped issues), Brunei, Cyprus, Christmas Island, Cocos (Keeling) Islands, Fiji, Malaya, Gilbert and Ellice Islands, Nauru, Jamaica, New Hebrides, Niue, Australia, Guernsey, Cook Islands; together with several shoe boxes filled with envelopes containing mostly Italian stamps and a quantity of world stamps, also noted two old albums of collections, a 1969 Stanley Gibbons World catalogue etc. *MUH, mint and used.* (1000s)

\$200

1629

World, an interesting accumulation some stored in two spring-back albums by Stanley Gibbons with stamps of the British Commonwealth, mint and used includes, Aden, Ceylon, Cyprus, Gold Coast, Gibraltar, Hong Kong, Kenya, Nigeria, Rhodesia, various islands of the West Indies including Barbados, Bahamas, Jamaica, Bermuda, as well as British Honduras, Brunei, Falkland Islands, Tonga, etc; with useful scattered pickings throughout, includes envelopes of M/S etc. to add to the collection; lot includes a stock book of used British Commonwealth mostly with 19th and early 20th century issues including Australian States, Malaysia, India, etc., various FDCs in cover folder, a sheet of Australian 1/2d orange kangaroo MUH no wmk., 6d kangaroo small mult. wmk. with OS overprint MUH, exchange book of Australian stamps and what seems to be a complete collection of MUH Silver Jubilee 1977 including M/S etc. *MUH, mint and used.* (many 100s)

\$200

Ex Malcolm S. Burrells Collection.

1630

World, lot includes a Triumph Stamp album with pickings and stamps to start of WWII, noted Ceylon KGV 10 and 20 Rupees (SG 318-9, CV £250); a range of early Republic from China, Egypt mint from 1920s, 1933 Railway set mint, also 20m of prince Farouk 9th birthday (SG 181 CV £130), Gibraltar KGV to 5/- set, 1924-5 GB Exhibition sets, Flight Covers first Flight covers to GB 1931 (2), India and States, etc., lot also includes (13) other albums and stock books mostly as child based collections; Australia, packs (14), post office sealed new issues packs (FV \$100+); assorted covers, used on and off paper (1000s), together with a quantity of USA stamp magazines of 1990s. *MUH, mint and used.* (1000s)

\$150



part

1631*

World, The Supreme Global Stamp Album by Minkus Publications, thickness 115mm, Volume IV with slipcase, Volume IV containing world stamps from F (Finland) to Greece, mostly MUH stamps, Finland various issues of 1960s, France an extensive collection from 1920s-1984 mostly complete as MUH a few mint, noted SG 352, 1013, 1058, 1059 (illustrated 1000 Fr), 1196 (illustrated fine mint), 1197 (illustrated), very extensive with good pickings of commems, airs and definitives from 1940s; collection includes Gabon pictorials, Great Britain, MUH from 1960s-1983 and various pictorial issues of Greece, few other countries included. *MUH, some mint, a very few used.* (100s)

\$300

1632

World, The Supreme Global Stamp Album by Minkus Publications, thickness 115mm, Volume VI with slipcase, Volume VI containing world stamps from K to M, including Kenya from 1935 noted QEII set to 10/-, 1963 set to 20/- and other sets to 1969, Laos a few sets from the 1960s, Luxembourg scattered sets to 1960, many sets 1960-1972, Manchukuo selected issues 1933-1945, Monaco many part sets etc to 1960s, Morocco including French Morocco selected sets many from the 1960s-1970s, Mozambique mint and used from 1900 selected issues and various sets, Nauru of the 1960s, Nepal a range of sets and part sets from 1957 to the 1960s; a few from various other countries. *MUH, some mint, a few used.* (100s)

\$120

1633

World, used stamps with duplication from Belgium, Netherlands, Switzerland, Sweden, Norway, Denmark, Finland, Vatican, San Marino and the following South American countries Bolivia, Argentina, Nicaragua, Panama, Venezuela and Egypt, all are neatly arranged in eight stock books, with issues mostly of the 20th century, lots include multiples of useful pickings. *Used.* (1,000s)

\$100

1634

World, collection of mostly used in three thick loose leaf screw fitted Cumberland Albums ranging from A-G, H-N, O-Z in country order, noted a few M/S and 9 leaves of China including a few scarce issues including a triptych of SG 2213a used, 1950 Peace as reprints etc; together with on Seven Seas leaves, New Zealand from 1874-1990 scattered and incomplete mostly MUH, mint and used. *MUH, mint and used.* (1000s)

\$120

1635

World, in a large box of Postage stamp covers in (5) special prepared folders a) Postal Heritage Society, QEII Silver Jubilee FDCs; b) and c) British Commonwealth FDCs; d) UN commemorative cover collection, e) British Commonwealth FDCs; also Australia, FDCs in two small cover albums together with other covers from Great Britain mostly c.1970s; many mostly commercial used world lot of covers (200+), mostly c.1970s including a Tin Can Mail cover dated May 26, 1937; 3 small albums of stamps and a large quantity of used on and off paper these mostly Australian. *Used.* (100s)

\$100



part

1636*

World, a quantity of FDC and other covers, Australia mostly from the 1930s, (19), many from the Pacific Islands (Tin Can Canoe Island (4), Nauru, New Hebrides, Fiji, Pitcairn Islands, New Caledonia, Tokelau Islands, British Solomon Islands, Penrhyn, Papua, Niue, Norfolk Island, Samoa, Gilbert & Ellice Islands, Cook Islands, Tonga, Western Samoa, New Zealand, etc) as well as other places. An interesting group many from the 1930s- 1970s, some interesting covers. *Used.* (approx 120)

\$150

1637

World, MUH stamps post 2000 from Australia approximate face values (\$150), United States approximate face value (FV \$700US), others from France, Japan etc. *MUH.* (100s)

\$300

1638

Albums and accessories, in two large cartons, an interesting selection of spring-back albums some from Stanley Gibbons, some unused with large quantity of mint album leaves (approx 15), mostly only the covers, together with a quantity of Davo mounts (mostly in original packs; a Lighthouse Stamp Mount cutter nearly as new, album refill leaves (10 lots), several minor philatelic publications etc. *Mostly used, some new.* (lot)

\$50