
Sixth Session, Commencing at 9.30 am

MISCELLANEOUS

DOCUMENTS

722

Documents, correspondence, and references related to the Ken O'Brien Collection, including his handwritten reference cards and collector's photographs. *Fine.* (lot)

\$50

Ex Ken O'Brien Collection.

723

New Guinea Victory: War Diary - Markham, Ramu, Huon Campaigns, 1943-1944, published by the Australian Army Canteens Service, 100pp, profusely illustrated, with original maps inserted, including Australia/New Guinea, Borneo, South Pacific, softcover. *Very fine.*

\$50

Ex Ken O'Brien Collection.

724

Coin cards, embossed cards showing a range of coins, plus flags and conversion rates, wide range of countries, including China, Denmark, France, Germany, Japan, Russia, Sweden, Switzerland, and 2 different USA cards, all housed in a photo album. *Very fine.* (56)

\$400



725*

Yuri Gagarin, signed b&w photograph, c.1950s, image of Gagarin in uniform with signature in blue below, (16.5 x 11mm). *Very fine and scarce.*

\$100

In 1961 Soviet Cosmonaut Yuri Gagarin became the first man in space, performing a single orbit of Earth in the Vostok 1 capsule. He was killed in 1968, during a regular training flight.

726

Copperplate Print, "Phryne Going to the Bath as Venus", engraved by J.B. Allen after J.M.W. Turner, 1859-1861, printed by London, Virtue & Co. Ltd., with printed description. *Rubber stamped in blue ink Bournemouth Public Library top corners, otherwise very fine.*

\$70

Ex Bournemouth Public Library Collection.

727

Austria, New Grand Imperial Loan Distribution, of 42,000,000 Florins, Reimbursable with a Capital of 129,239,200 Florins, combined with 146th Frankfurt Prize & Premium Distribution of 1,967,900 Florins, to take place on the 1st July 1864 at Vienna, black print on grey within border, on thin paper (44.5x27.5cm); Kingdom of Bohemia, The Bohemian Coal Mining Company, in the District of Rakowitz, for one share, No.1929, 1858 (in words), black on thin cobalt blue watermarked paper. *First with folds, two small holes and light foxing on two folds, wallet marks on one folded rectangle area, otherwise extremely fine.* (2)

\$50

728

Debentures, Anglo-Australian Investment Finance & Land Comy Limited of Sydney, for 100, dated [fourteenth April] 18[91], due 1st July 1901, black print, ornate border and scrollwork left side, vignette of map and Australian landscape top centre, with eighteen of twenty one coupons attached; Iron, Steel and Metals Manufacturing, Melbourne, mortgage debenture for 100, dated [tenth November] 190[8]; Domara River Plantations Limited, Second Mortgage Debenture for 50, 19[29]. *With folds and creases, soiled and small tears down left edge on first, second with folds, spike hole and tears to right edge, last with ink stain left side edge, fine - very fine.* (3)

\$50

729

USA and Canada, The Chicago Live Stock Exchange, Certificate of Membership, 18[97], No.1329, issued to Charles B Cady, dark blue print and ornate border, vignette of livestock top centre and small vignette of railroad top right corner, written in ink 'cancelled/retired' across front; The Lancaster Corporation, New Jersey, 1946, brown print; Irving Trust Company, New York, 1959, orange print, with stamp bill from Blyth & Co.; Phelps Dodge Corporation, New York, 1960, green print; Shulton Inc, New Jersey, 1967, green print, Precision Polymers Inc, Delaware, 1972, blue print; together with United States Internal Revenue Stock Transfer stamps, 4c, overprinted 'series 1944', green, part sheet of 72; Canada, The Marconi Wireless Telegraph Company of Canada Ltd, black on patterned green, printed by Sands & McDougall Limited, Melbourne, with broker's stamp dated 25 Sep 1906; Exportex Proprietary Limited, Victoria, Australia, 1949; Exportex Trading Company Limited, Ontario, Canada, 1949 (both certificates the same design and issued to the one person); Placer Development Limited, British Columbia, Canada, 19[49], Sydney register, blue on light green. *First certificate with taped repair on back to one fold, pin holes and a few small rust spots, others with light folds and creases, some with pin holes or perforations, second certificate with stains left side margin, 3cm tear on rig (both certificates the same design and issued to the one person).* (lot)

\$50

730

World, Peruvian Mining Company, for one share, No.4596, issued London 28th March 1825; Belgium, Compagnie Belge des Mines d'or Australiennes, for 250 francs, 1897, Action de Capital No.03546, brown on brown with two of thirty coupons attached; Action de Dividende No.21884, black on green, with three of thirty coupons attached; France, Societe Fonciere de Paris, 1926, for 250 francs, green on patterned green, with fifteen of thirty coupons attached; Societe Forestiere Franco-Australienne, Paris [1921], black on patterned green, with all twenty five coupons attached (No.1 torn and repaired with tape); Aktiebolaget Kreuger & Toll, participating debenture for five hundred kronor, Stockholm 1st July 1928; black on mauve; India, Swadeshi Cotton Mills Company, Uttar Pradesh, bank order, 197[1] (5). With pin holes, folds, some with tape repairs, good - good very fine. (11)

\$70

731

Share certificates, legal documents and banking ephemera, date range c1875 - 1955. In a folder, mostly fine - very fine. (approx 35)

\$100

The Anglo-Australian Investment
(hereinafter called the Company) hereby
Mrs Helen Potter
of 2 Bolton Gardens S.W.



732*

The Anglo-Australian Investment Finance & Land Compy Limited (of Sydney), debenture no.1883 for one hundred pounds, due 1st January 1900 and issued 31st October 1890 to Mrs Helen Potter of 2 Bolton Gardens S.W., with interest coupons nos 7-20 attached, vignette at side and another at the top showing a scene of the Australian landscape featuring an emu and a kangaroo, a native, two miners at work and a globe with a map of Australia, with an impressed duty stamp of two shillings sixpence and an impressed seal of the company in England, also stamped For the Receiver. Some loss of paper and edge tears, otherwise fine.

\$200

Ex Spink Auctions (Australia) Sale 31 (lot 620), March 1990.

The Anglo-Australian Investment Finance & Land Company went into liquidation in early 1893. At an extraordinary general meeting of shareholders held at Sydney on 30 January 1893 the chairman announced that Mr Humphrey MLC had been requested by the London debenture holders to act in their interests.

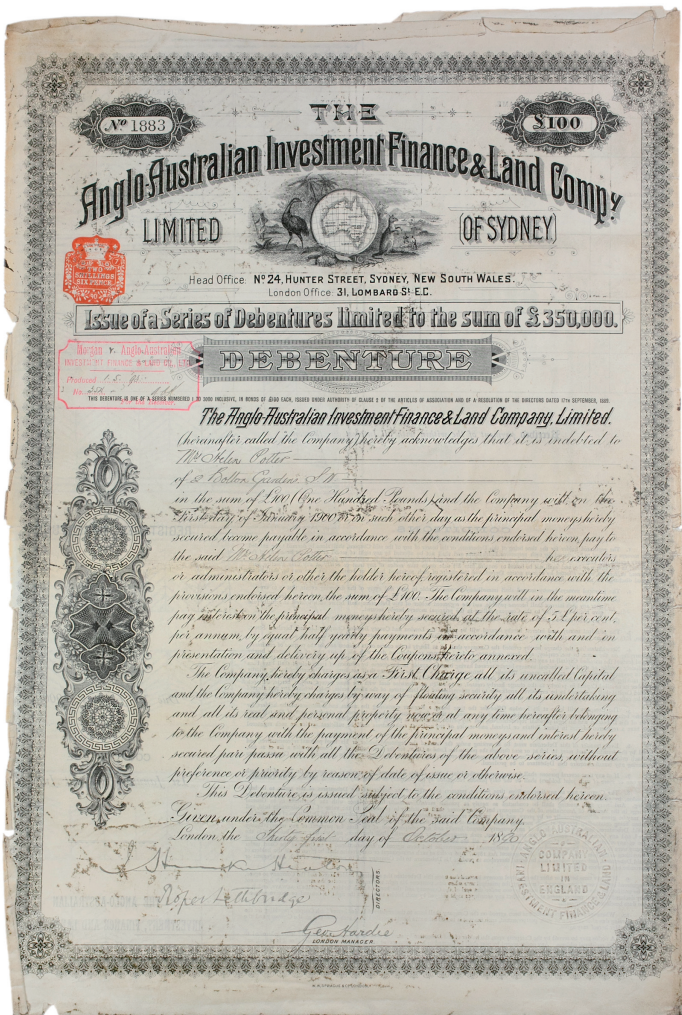
Mrs Helen Potter of 2 Bolton Gardens as named on the above debenture was the mother of the world famous children's book author, Helen Beatrix Potter, who was born at 2 Bolton Gardens, Kensington, London on 28 July 1866 into a well-to-do family and lived there until she married William Heelis in 1913. Her first book, The Tale of Peter Rabbit was published in 1902 while she was living at 2 Bolton Gardens. Mrs Helen Potter died 20 December 1932 at the age of 93.

With research.

733

Spain, Royal Treasury Bond, Series A No.477 for one hundred reales vellon, with interest of 6% per year, repayable as preferential debt by the Public Treasury in the first five years of the pacification of the kingdom, issued at Bayonne, first of November 1873. Creases, folds, edge nicks and a few letters written on reverse, otherwise fine.

\$80



734

Insurance, Colonial Mutual Life Assurance Society Limited, policy issued to Michael Bolger, farmer, of Trentham, Victoria, for the sum of 250, dated twenty-eighth November 1888, with vignette of two seated female figures top centre; Australian Mutual Fire Insurance Society, policy issued to Christina Pollock for a dwelling in Marion St, Leichhardt, sum insured 200, dated thirtieth May 1896, with vignette of the Society's Head Office building corner Pitt and King Streets, Sydney, and a NSW one shilling duty stamp affixed. *With folds, creases, some edge tears, small stain top right side on first policy, fine.* (2)

\$50

735

Sundry, 1920-1970s, Alliance Holdings, 1969; Artarmon Estate Limited, profit sharing receipt, 1922; A.Barrett's Proprietary Limited, 19[26], 19[27]; Australian Factors, 19[64]; Automobile Advance and Agency Company, 19[55]; Berriquin Holdings, 19[68]; Browse Island Company, 192[1]; Chevron Sydney, 19[67]; Commercial & General Acceptance Limited, 1960, 1965, 1966; Commercial Trading Pty Limited (typed), 19[48], 19[49]; Combined Resources, 1969; Commercial Guaranty, 1965; Cox Brothers (Australia) (7), 1956-1969; Davys Proprietary Limited, 19[26]; Decmar Corporation, 19[61]; Derrin Bros (Holdings), 19[61]; Drylec Limited (4), 195[4], 19[59] (2), 1965; Dobell (Q'LD) Pty Ltd (typed), 1954; J.T.Dunston Pty Ltd, 19[39]; Five Arrows Australia Resources Trust, unissued; Great Western Consolidated, 1969 (3); Mainline Corporation, 1969, 1970; N.B.H.C. Holdings, 1971; Nema Holdings, 1975; H.G.Palmer (Consolidated), 1969; Penworth Limited, 19[38]; Randwick Estates Limited (typed), 19[37]; Soltex Holdings, 19[69]; Surrey Engine and Boiler Works, 19[20]; United Distributors, 19[26], U.E.B. Industries, 1970; Waters Trading Co, 9[47]; Willsford Limited, 19--, unissued; Wytex Proprietary, 19[46]. *Housed in a four ring binder, some with pin or punch holes, folds, two with edge tears, fine - extremely fine.* (50)

\$100



736*

China, Sung Dynasty, 12-13th Century, Ying Qing ware ornate porcelain funerary urn, applied dragon wrapped around neck with clouds around, small dog sitting on shoulder. *Three arms snapped off, one glued back on, some scuffing on lower glaze and minor chipping on lip, fine and rare.*

\$2,000

Ex Ken O'Brien Collection,



737*

China, Sung Dynasty, Celadon bowl with foliate rim and a horizontal ridge line midway down the body, mid blue-green glaze; another with a green-brown glaze. *Sandy gravel temper visible in well and on foot, good fine; minor scuffing on glaze around body, very fine (illustrated).* (2)

\$300

Ex Ken O'Brien Collection with his handwritten cards.



738*

China, Southern Sung Dynasty, Qing Bai ware saucer, with raised fish and lotus design. *Some glaze wear on highpoints, otherwise nearly very fine.*

\$200

Ex Ken O'Brien Collection.

base. *Very fine; good fine.* (2)

\$150

Ex Ken O'Brien Collection with his handwritten card.



741

China, Yuan/Sung Dynasty, ivory glazed circular lidded box (8.5cm dia), incised with geometric and floral patterns. *Some small chips around meeting edge, very fine.*

\$300

Ex Ken O'Brien Collection with his handwritten card.



739*

China, Sung Dynasty, Celadon dish (12.25cm dia), green-brown crackle glaze with lighter areas, flattened flared rim, lightly incised decoration of leaves in well. *Very fine.*

\$80

Ex Ken O'Brien Collection with his handwritten card.

Private purchase from Connor Galleries, Moss Vale.



740*

China, Sung Dynasty, Celadon low bowl (12.25cm dia), fine even green crackle glaze; uncertain date wide dish (approx 24cm dia), light brown-grey crackle glaze, seven red dots on

742*

China, Yuan/Sung Dynasty, (12th-13th century), Honan Area, Chun Yao stoneware bowl (21cm dia), deep blue glaze shifting to green-brown at rim, tall unglazed foot. *Extremely fine.*

\$200

Ex Ken O'Brien Collection with his handwritten card.



743*
China, Sung - Yuan Dynasty, Qing Bai ware vase, light green glaze, two tubular handles on neck, with three lion heads around body, sitting on three legs. *Extremely fine and rare.*

\$1,000

Ex K. O'Brien Collection with his handwritten ticket.

Ex Pontianak from S.W. Celebes.



744*
China, Yuan Dynasty, Qingbai porcelain bowl incised with lotus motif around exterior, and lightly excised with a flower in the centre of the well, makers mark on base. *Small chip on rim, 1cm chip on base, and some firing imperfections, nearly very fine.*

\$300

Ex Ken O'Brien Collection.



745*
China, 14th Century, Celadon and iron glaze pot, dense heavy fabric, globular iron glaze decoration. *Large, irregular crazing, some firing imperfections, otherwise extremely fine.*

\$150

Ex Ken O'Brien Collection with his handwritten card.

Ex C. Vivian Collection.



746*
China, Ming Dynasty (1368-1644), Cizhou ware wine jar, white glaze with brown details depicting a nature scene with three figures seated around. *Small glaze slip on shoulders, otherwise very fine.*

\$2,000

Ex Ken O'Brien Collection.



747*
China, Ming Dynasty (circa 15th century), blue and white jarlets decorated with floral motifs. *Very fine; very fine; good very fine.* (3)

\$200

Ex Ken O'Brien Collection.



749*
China, Ming Dynasty, blue and white 'hole bottom' saucer (12.5cm dia.), abstract goddess design inside, scenic decor on exterior. *Very fine.*

\$120

Ex Ken O'Brien Collection with his handwritten card.

Ex L. Cunnington Colleciton.



748*
China, Ming Dynasty, pale blue-white jar, decorated with a floral and fern motiff, mandala-like pattern around neck. *Minor firing imperfection, very fine.*

\$150

Ex Ken O'Brien Collection with his handwritten card.



750*
China, Ming Dynasty, (15th century), blue and white porcelain 'hole bottom' saucer dish, slightly raised and richly painted orange-brown fish surrounded by floral patterns, within two circles, a third circle around rim. *Attractively decorated, extremely fine.*

\$150

Ex. Ken O'Brien Collection with his handwritten card.

Ex C. Vivian Collection.





751*

China, Ming Dynasty, blue and white porcelain bowl (14cm dia.), underglazed dark blue decoration, exterior fish, flowers, and trees, interior nature scene inside two circles, crosshatched lip. *Some firing imperfections, very fine.*

\$150

Ex Ken O'Brien Collection with his handwritten card.

753*

China, Ming Dynasty, blue and white porcelain bowl (14.25cm dia), cream glaze, floral emblem in well, cranes and lily pads in nature scene around exterior, high foot with unglazed bottom. *Areas of wear on highpoints, some chipping on glaze in well, good fine.*

\$300

Ex Ken O'Brien Collection with his handwritten card.



752*

China, Ming Dynasty, blue and white porcelain jar (8cm), abstract deer in landscape motif. *Two small (Under 1cm) chips on lip, otherwise good fine.*

\$100

Ex Ken O'Brien Collection with his handwritten card.



754*
Southern China, 15th Century, Swatow bowl (24cm dia), blue-green crackle glaze with blue and white dragon decorations on exterior, unglazed band around well. Two glazed over chips on rim, extremely fine.

\$300

Ex Ken O'Brien Collection with his handwritten card.



755*
China, Ming Dynasty, blue and white Jingdezhen, Min-Yao ware porcelain bowl, interior decorated with a flower medallion in centre surrounded by garlands, exterior a geometric hexagonal pattern terminating near foot in garlands. Some firing imperfections, very fine.

\$200

Ex Ken O'Brien Collection with his handwritten card.



756*
China, Ming Dynasty, blue and white porcelain export ware bowl, light blue glaze, darker outline with lighter motif, characters in centre, folial pattern on exterior. Minor firing imperfections, chip on foot, good fine.

\$150

Ex Ken O'Brien Collection with his handwritten card.

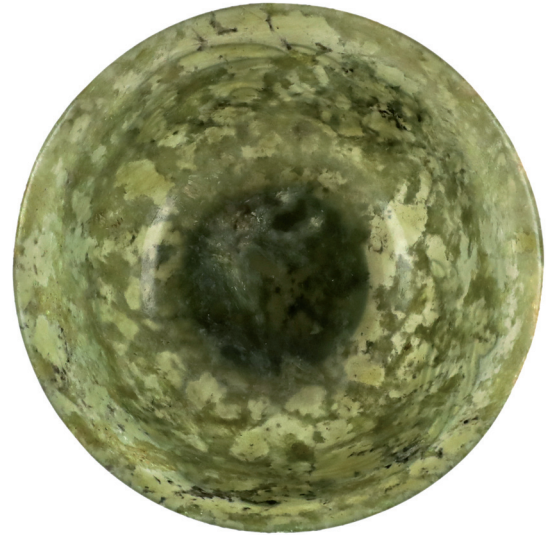


757*

China, Ming Dynasty, (late 16th-early 17th century), blue and white jarlet (h: 6.5cm), peacock feathers, symbols, and garland pattern. *Heavily chipped on lip, crazed glaze with some loss, fine.*

\$50

Ex Ken O'Brien Collection with his handwritten card.



759*

China, Qing Dynasty, spinach jade bowl with two Chinese dragons carved in low relief around the exterior. *Extremely fine.*

\$500

Ex Ken O'Brien Collection with collector's photograph.



758*

China, Kuang Hsu period, Qing Dynasty, (1874-1908), pale greenish-white translucent jade bowl decorated with a geometric pattern painted in enamel and gilt (10cm x 3.75cm). *Some small areas of paint loss, nearly extremely fine and very rare.*

\$1,000

Ex Ken O'Brien Collection with his handwritten card and documents.

Ex Philippines National Museum.



760*
China, Qing Dynasty, cafe au lait crackle glazed wide bowl (18.5cm dia), decorated with fifteen blue and white figures around exterior, floral blue and white pattern around interior rim, and a circular mountain scene in well, character on base; a cafe au lait glazed bowl (9.75cm dia) decorated with nine blue and white figures on pedestals. *Very fine.* (2)

\$300

Ex Ken O'Brien Collection with his handwritten card.



762*
China, 17th-19th century, blue and white porcelain saucer (9.75cm dia.), flower in centre with a globular pattern surrounding, sunburst pattern on exterior around foot with wavy line around lip. *Some small firing chips, otherwise very fine.*

\$100

Ex Ken O'Brien Collection.

761*
China, Qing Dynasty, blue and white porcelain footed ancestor boxes, decorated with floral and folial motifs with hatched patterns around the edges, with memorial inscriptions inside. *Some minor edge wear on each, good fine - very fine.* (3)

\$250

Ex Ken O'Brien Collection.



763*
China, 20th Century, Celadon temple jar, light green glaze, wide globular body and short neck, with a matching lid. *Extremely fine.*

\$100

Ex Ken O'Brien Collection with his handwritten card.



764*
China, Qing Dynasty, blue and white porcelain lidded ancestor box, decorated with leafy garlands and floral emblems around sides, a large eyed butterfly amongst foliage on the lid, surrounded by a meander-like pattern, with an inscription inside commemorating an ancestor. *Some wear around edges, tape residue around centre, very fine.*

\$150

Ex Ken O'Brien Collection with his handwritten card.

Ex P. Colwell Collection.



765*
China, 19th-20th century, famille verte puzzle teapot, decorated with a green background and a flower motif throughout, with a dog bowing on the pot lid, standing on a wooden base. *Nearly extremely fine.*

\$400

Ex Ken O'Brien Collection.



766*
China, 19th-20th century, famille verte puzzle teapot, blue background with flowers throughout, a seated figure on one side, and a standing figure on the other of central panel, seated dog on pot lid, standing on a wooden base. *Small glaze chip on lid, very fine.*

\$400

Ex Ken O'Brien Collection.

767
China, 19th-20th century, reticulated famille verte porcelain vase depicting the eight immortals, Kangxi mark on base. *A small glaze chip on body, otherwise nearly extremely fine.*

\$300

Ex Ken O'Brien Collection with his handwritten card.



768*
China, Chi'en Lung mark period, Cafe au lait colour porcelain

bowl, flowers with cicadas and bees around gilt band above, undecorated well, mark on base. *Extremely fine.*

\$200

Ex Ken O'Brien Collection with his handwritten card and photograph.



769*
China, 19-20th Century, blue and white porcelain export ware bowl (16.25cm dia), three Chinese lions with large flowers and scrolling pattern around exterior, fishing scene around interior rim and a temple in a mountain in well. *A few minor firing imperfections, very fine.*

\$300

Ex Ken O'Brien Collection with his handwritten card.



770*
China, porcelain bowl, blue and white export ware (15cm dia.), blue underglazed decoration with black outlines, depicting flowers and birds (?), blue line on inside of lip and floral emblem inside well. *Some minor glaze chipping, 3cm area of roughness on lip, nearly very fine.*

\$150

Ex Ken O'Brien Collection with his handwritten card.



771*

China, Celadon ware bowl, scalloped rim with fluted sides, light blue-green glaze, red iron glaze floral decoration inside. *Extremely fine.*

\$200

Ex Ken O'Brien Collection with his handwritten card.



772*

China, uncertain dates, a white glazed porcelain bowl with a lotus leaf pattern incised around exterior (11.5cm dia); a small celadon low bowl (9cm dia). *Very fine.* (2)

\$100

Ex Ken O'Brien Collection.



773*

China, 18th-19th century, celadon ware green crackle glaze storage jar, two raised Chinese dragons on either side, with 6 lugs around neck. *Extremely fine.*

\$600

Ex Ken O'Brien Collection.



774*

Procelain bowl, white glaze with floral decorations around outside, and a single flower in the well (11.75cm dia). *Very fine.*

\$80

Ex Ken O'Brien Collection with his handwritten card.

775

China, lidded bowl, c.late 19th century, of squat roundform with painted depictions of green and blue dragons,(10cm high x 15cm wide); replica silver sycee (95mm wide); replica copper cash coin; tea towel featuring a bold image of Chairman Mao. *Very fine.* (4)

\$100



776*

China, Republic Period, 20th century, eggshell porcelain vase, slender design with long neck and flaring rim, decorated all over with polychrome floral designs and gilding, the round foot with character mark. *Very fine.*

\$100



777*

Vietnam, Champa,(14th-15th Century), brown glaze stoneware jar (h: 9cm). *Glaze peeling heavily on lower body, minor chips on foot, fine.*

\$80

Ex Ken O'Brien Collection with his handwritten card.

Ex Celebes Collection 1946.



778*

Vietnam, Annam, 14/15th century Celadon ware wine ewer (14cm), light green glaze with flower designs in cartouche on both sides. *Extremely fine.*

\$600

Ex K. O'Brien Collection with his handwritten card.



779*

Vietnam, Annam, (15th Century), Celadon bowl (11.75cm dia), dull green-brown glaze, centre unglazed. *Very fine.*
\$80

Ex Ken O'Brien Collection.

Ex C. Vivian Collection.



780*

Vietnam, Annam, (15th Century), stoneware vase with grey glaze and underglazed blue decorations, mandala-like pattern around neck, floral and folial motif around shoulders, and

a pointed shield pattern around the base. *Attractive and extremely fine.*

\$1,000

Ex Ken O'Brien Collection with his handwritten card.



781*

Thailand, uncertain date, a pair of white glazed porcelain bowls (11.5cm dia), with flowers in well and three lines above. *Very fine.* (2)

\$100

Ex Ken O'Brien Collection.



782*

Thailand, uncertain date, a pair of light brown glazed bowls (11.5cm dia) with three incised patterns inside, with a wavy looped pattern around exterior rim, two toned darker glazing near foot. *Very fine.* (2)

\$100

Ex Ken O'Brien Collection.



783*
Thailand, wide saucer dish (14.5 cm dia), cream glaze with geometric decorations in green and rose coloured patterns around, both inside and out; a similar bowl with three roses around outside and a small rose in well. A few small areas of glaze loss and minor scuffing on rim, good fine; very fine. (2)

\$200

Ex Ken O'Brien Collection with his handwritten card.



784*
Japan, vintage porcelain cup, three figures in nature scene, one riding a crane, a second holding a crooked staff, a third chasing a three legged frog, red bank around lip and foot, maker's mark on base. Unusual, very fine.

\$50

Ex Ken O'Brien Collection.

Ex Tony Woodward Collection 1984.



785*
India, black jade tablet (9cm x 4.5cm) depicting Krishna as Srinathji. Very fine.

\$80

Ex Ken O'Brien Collection.

786
India, 19th-20th century, painted wooden idol of a Christian saint (11cm), holding a child and palm leaf; another similar (16.5cm) holding a child and blessing, with blue and gilt robes; another similar (18cm) holding a child and sceptre with iron halo above. Poor; good; good. (3)

\$100

Ex Ken O'Brien Collection with his handwritten cards.



787*
India, 20th century, relief carved from tusk, depicting Kali standing on Siva (14cm). Very fine.

\$150

Ex Ken O'Brien Collection.



788*
India, 19th-20th century, Amitabha Dhanibuddha seated figure carved from tusk, with gilt and painted details on the robes (10cm). *Good fine.*

\$200

Ex Ken O'Brien Collection with his handwritten card.

789
India, 19th-20th century, Dhokra style statues (11cm - 30cm), an assortment of traditional style Indian statues depicting figures riding birds, elephants, and holding implements. *Fair - fine. (5)*

\$200

Ex Ken O'Brien Collection.



790*
India, 19th-20th century, Ganesha figure carved from tusk (16cm), Ganesha seated on the mouse Akhu, hands upraised, right leg folded, elaborate background, two winged elephants standing on pillars on the back. *Right tusk of Ganesha and Akhu's collar broken, dark aged patina, fine.*

\$300

Ex Ken O'Brien Collection with his handwritten card.



791*
India, 19th century, Ganesha standing with 2 upraised holding implements, left hand holding robe and right signalling, carved from tusk. *Aged patina, very fine.*

\$250

Ex Ken O'Brien Collection.



792*
India, Sakyamuni Buddha bust on a lotus plinth carved from tusk. *Brown and yellow mottled patina, good fine.*

\$300

Ex Ken O'Brien Collection.

793
Tibet, Tibetan calendar, in bronze, pressed sheet and a medallion; a small metal decorative hanging ornament. *Very fine. (3)*

\$20

Ex Ken O'Brien Collection.

794
Tibet, silver amulet plaque with copper backing, depicting the Tibetan calendar on the shell of a monstrous tortoise, flanked by dancing citipati, Tibetan inscription around and emblem on back. *Very fine.*

\$100

Ex Ken O'Brien Collection with his handwritten card.



795*
Tibet, silver amulet box with bronze backing (9cm), kneeling figure holding sword upraised in left hand and noose in right, sword and face gilt, Tibetan inscription on back. *Very fine.*
 \$300

Ex Ken O'Brien Collection with his handwritten card.



797*
Tibet, silver amulet box with bronze backing (9.25cm), 8 armed figure standing holding various implements, cut out backing showing parchment with Tibetan inscription inside, emblem on back, leather cord tied to lug on side. *Very fine.*
 \$300

Ex Ken O'Brien Collection with his handwritten card.



798*
Tibet, silver "Om" charm hollow pendant (5.5cm x 4cm) (21.7g, 60% silver XRF tested). *Fine.*
 \$50

Ex Ken O'Brien Collection with his handwritten card.



799
Tibet, silver amulet box with bronze backing (6.5cm), cut out sacred "Om" symbol with small turquoise bead above, dotted border around. *Very fine.*
 \$200

Ex Ken O'Brien Collection with his handwritten card.

796*
Tibet, 18th century, silver amulet box with bronze base, depicting Avalkitesvara with gilt faces and turquoise beads as earrings, inscription on back and emblem on base (400g, 70% silver XRF tested). *Very fine.*
 \$500

Ex Ken O'Brien Collection.



800*
Tibet, Amitabha buddha silver incense burner, seated holding basket with inscription on front (270g, 45% silver XRF tested). *Very fine.*

\$250

Ex Ken O'Brien Collection.

801
Tibet, 19th-20th century, large painted wooden statue of Amoghapasa standing, right hand blessing, rest holding implements. *Some areas of paint loss and flaking, colours dulled with age, fair.*

\$150

Ex Ken O'Brien Collection with his handwritten card.

802
Tibet, 19th century, bronze figure of Yama (19.5cm), god of the dead, standing with right hand raised holding a skeleton staff, and a noose in the left hand, garland of heads around body, gilding on face and details, come with a heavy painted metal base; small bronze statue of Yama standing on dead body (9.5cm). *Very fine; good fine. (2)*

\$150

Ex K. O'Brien Collection.



803*
Tibet, 19th Century, Sakyamuni Buddha carved from tusk, seated cross legged on a high throne, holding a flame with an aureole behind, Qianglong mark on base. *Aged patina, very fine.*

\$400

Ex Ken O'Brien Collection with collector's photographs.

804

Tibet, 18th-19th century, clay Tsha-Tsha statue of Amitayus Dhyani Buddha seated on a lotus throne, polychrome paint, on a wooden base. *Some areas of paint loss, good fine.*

\$100

Ex Ken O'Brien Collection.

805

Tibet, 18th-19th century, Sakyamuni Buddha meditating on the Naga throne, carved from a tusk-like material, traces of paint. *Very fine.*

\$100

Ex Ken O'Brien Collection.



806*

Tibet, 18th-19th century, Chakrasamvara in yab-yum, two figures embraced on a throne, mandala on base. *Very fine.*

\$100

Ex Ken O'Brien Collection.



807*

Tibet, 18th-19th century, Dharmapala seated on a horned beast, shown with four heads each with a jewelled crown, eight arms holding weapons and implements of worship, red and turquoise beads throughout. *Very fine.*

\$500

Ex Ken O'Brien Collection.

808

Tibet, 17-18th century, Sadaksari copper statue (12cm), figure seated cross-legged with two arms meditatiing and two aloft, traces of red paint all over; bronze statue of a figure seated on a throne (12.5cm) turquoise beads on forehead, arms, and chest with traces of gilding all over; another similar. *Fine; fine; fine.* (3)

\$250

Ex K. O'Brien Collection.

809

China, bronze statuette of a Chinese lion sitting, mouth open; a small bronze statue of a seated lion. *Very fine; evidence of a repair to the front leg, fair.* (2)

\$50

Ex Ken O'Brien Collection.



810*

China, Qing Dynasty, red wood snuff bottle with carved relief floral decoration, lid with brass stopper and spoon attached, gilded maker's mark on base; another similar with landscape scene, cork stopper, spoon inside bottle, maker's mark on base. *Very fine; fine.* (2)

\$150

Ex Ken O'Brien Collection.

811

China, bronze open work incense burner, tapered hexagonal shape with two dragons as handles, each panel depicting a figure standing on an animal. *Two of the feet have evidence of repair, otherwise good fine.*

\$200

Ex Ken O'Brien Collection.



812*

China, Qing Dynasty, one of the five hundred Lohan holding a stupa with lotus emission, carved from tusk, standing on a wooden base. *Yellow-brown aged patina, very fine.*

\$500

Ex Ken O'Brien Collection.

813

China, Taoist bronze statue of a bearded man holding a child; hollow bronze statue of a seated man meditating on a throne. *Fine.* (2)

\$100

Ex Ken O'Brien Collection.

814

China, Blanc de Chine Kwan-yi Guanyu seated figure, maker's mark between shoulders. *Extremely fine.*

\$150

Ex Ken O'Brien Collection.



815*
China, late 19th century, ivory carved Buddha, seated smiling, holding flower, with child on shoulder, (70mm high). *Very fine.*

\$900

816
China, early twentieth century, four panel screen, black laquered timber, depicting ladies of leisure in garden scenes, coloured ivory and mother of pearl inlay, (91 x 30 cm). *Very fine.*

\$100

817
China, 19th-20th century, porcelain panel, rectangular, depicting a scholar writing at table with musician nearby, in a bamboo woodland, framed, (38.5 x 34cm); 20th century, silk painting, depicting workers cultivating a rice paddy, framed, (44.5 x 39.5cm). *Very fine.* (2)

\$50

Ex Ken O'Brien Collection.



818*
Thailand, 17th-18th century, bronze filled Sakyamuni Buddha head with usnisa flame top, Sukhothai style, mounted on a wooden block. *Darl brown patina, very fine.*

\$700

Ex K. O'Brien Collection with his handwritten card, private purchase from Chin Hua 1980.

819
Japan, bronze incense burners, in the form of a traditional Japanese summer house (13cm x 14cm x 9cm); another similar (6.5cm x 8.5cm x 6cm). *Very fine.* (2)

\$100

Ex Ken O'Brien Collection.

820
Carved wooden statue or candle bases, red lacquered wood. *Fine.* (5)

\$30

Ex Ken O'Brien Collection.



821*
Japan, late 19th century, ivory figure of a standing Hotei/ Buddha, smiling, holding large sack and staff, signed at base, (10.5cm high). *Extremely fine.*

\$2,500



822*
China, green jade reclining Budai Buddha on wooden stand. *Very fine.*

\$200

Ex Ken O'Brien Collection.



823*
China, Qing Dynasty, serpentine jade statuette of Sakyamuni buddha seated on a lotus throne, on a wooden base. *Very fine.*

\$200

Ex Ken O'Brien Collection with his handwritten card.



824*
China, 20th Century, translucent Jade statue of three Chinese lions chasing a monkey perched atop a tree, on a wooden base. *Extremely fine.*

\$600

Ex Ken O'Brien Collection.



825*
Near East, silver bowl with scalloped edges, rope pattern around rim and floral motif around foot, hearts around well (XRF tested 96% silver, 323g). *Attractive deep iridescent toning throughout, very fine.*

\$400

Ex Ken O'Brien Collection.

826

South East and Central Asia, antique and vintage Buddhist and Hindu statues (15-22cm), statues in bronze standing with hands raised in worshipping poses (5), a figure seated on a raised pedestal, leg crossed and hands on lap; painted clay relief of Chakrasamvara. *Tallest statue has a broken arm, piece in separate bag; clay relief has large areas of paint loss; poor - very fine.* (7)

\$200

Ex Ken O'Brien Collection.

827

South East and Central Asia, assorted vintage and antique Buddhist and Hindu statues (6) and plaques (2) (8cm-14cm), Vishnu, Rama, Yama, seated buddhas etc, some with burial patina. *Poor - extremely fine.* (8)

\$150

Ex Ken O'Brien Collection.

828

Soapstone statues, assorted soapstone statues of Buddhist and Hindu deities. *Very fine - extremely fine.* (10)

\$100

Ex Ken O'Brien Collection.

829

Idols, assorted Buddhist and Hindu statuettes in brass, bronze, and white metal, ranging from 2.5cm to 7cm. *Fair - very fine.* (30)

\$100

830

India and Tibet, antique and vintage Buddhist and Hindu statues (11cm - 22cm), figures seated in meditation (5), Nangyalma with attendant on throne with traces of gilding. *Fine - very fine.* (5)

\$250

Ex Ken O'Brien Collection.

831

Hindu and Buddhist statues in bronze and brass, Hanuman, Ganesha, and Buddha (10-13cm). *Fine - good fine.* (3)

\$80

Ex Ken O'Brien Collection.

832

Assorted Buddhist statues, carved from stone, wood, and tusk, some on bases, various depictions of Buddai Buddha and an old beared man. *Fair - fine.* (5)

\$80

Ex Ken O'Brien Collection.

833

South East Asia, a pair of ornately carved wooden statues, depicting a figure seated behind an arch and a figure seated on a rock, hands together in meditation. *Very fine.* (2)

\$100

Ex Ken O'Brien Collection.

834

Assorted statues, charms, trinkets, including heavy brass elephant, silvered pressed religious plaque, black jade Buddha, Chinese green jade charm, wooden snuff bottle, relief carved stone statue, wooden statues. *Fair - extremely fine.* (14)

\$150

Ex Ken O'Brien Collection.

835

Carved elephant statuette, tusk-like material, walking forward with trunk upraised; gilt statue of ganesh seated with arms upraised, tusk-like material; standing statuette of Fu Lu Shou, carved from a tusk-like material (2). *End of trunk missing, otherwise fine; fine; good fine.* (4)

\$100

Ex Ken O'Brien Collection with his handwritten card.



836*

Pen pot (5cm x 3cm), carved from bone and a tusk like material, relief carving of a lion chasing an elephant through a forest. *Very fine.*

\$100

Ex Ken O'Brien Collection.



837*

Asia, 19th Century, Sakyamuni Buddha fasting carved from tusk, Gandhara style, Buddha seated on throne, head downturned with halo, fire altar with figure worshipping below. *Very fine.*

\$200

Ex Ken O'Brien Collection.



838*
Central Asia, 18th Century, Sakyamuni Buddha seated on a serpent backed throne with three wolf heads above, carved from tusk. Aged patina, very fine.

\$300

Ex Ken O'Brien Collection.

839
Central & South East Asia, Sakyamuni Buddha statue in bronze, seated on a throne; another in painted wood; a bronze pagoda statue. Fine - very fine. (3)

\$150

Ex Ken O'Brien Collection.

840
Thailand, engraved and inked shell (22cm x 21.5cm), depicting a goddess floating in clouds, in traditional dress holding a plate of food aloft, rendered in black, green, and red. Extremely fine.

\$150

Ex Ken O'Brien Collection.



841*
Oyster Shells, iridescent mother of pearl on the inside, various sizes from 12cm to 24cm. Very fine. (6)

\$80

Ex Ken O'Brien Collection.



842*
Mother of pearl statue, carved oyster shell of an eagle on branch with wings spread, head downwards, with an oyster shell base. Extremely fine.

\$150

Ex Ken O'Brien Collection.



part

843*
Myanmar (Burma), 1901, Bronze Sakyamuni Buddha statue (19cm), buddha seated meditating on a pedestal with incised decoration, inscription in Brahmi ending in date on rear; Nepal; Sakyamuni Buddha bronze statuette (12cm), seated on a throne supported by Hanuman, elephants, and lions; Sakyamuni buddha statuette, seated with orb in hand. *Very fine; good fine; fine.* (3)

\$400

Ex K. O'Brien Collection with his handwritten card.



845*

China, late 19th century, set of seven carved ivory immortals, each model carved with various talismans, the elaborate details on clothing picked out in colour, signed at base, on custom wooden stand with silver cloud inlay, (each immortal 8cm high). *Extremely fine.* (7)

\$4,000



846*

Japan, 19th century, ivory netsuke, depicting two fish on open waters, (40mm long). *Very fine and scarce.*

\$100



844*
China, 19th century, ivory card holder, of rectangular form, with lid, panels carved with bas reliefs depicting garden scenes with pavilions, (83mm high). *Very fine.*

\$100



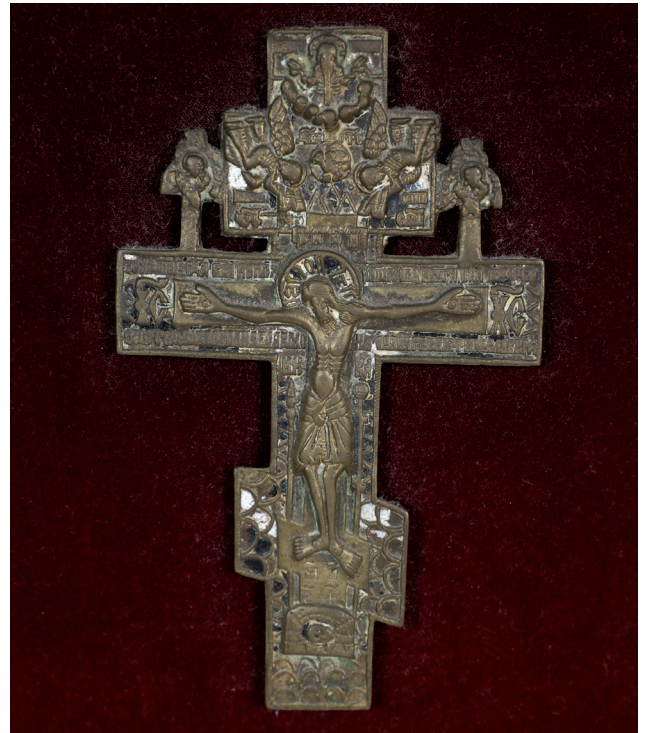
847*
Japan, 19th century, ivory netsuke, depicting a seated rat with curled tail and mother of pearl eyes, (50mm long).
Very fine and scarce.

\$200



848*
Japan, 19th century, ivory netsuke, depicting the head of Fudo-Myo-o, the god of war being stabbed in the head by an adversary, signed Kazu-Mitsu on base, (40mm high).
Extremely fine and of the finest style.

\$300



849*
Orthodox Crucifix, 18th-19th century, brass byzantine style crucifix with traces of white and blue enamel, set in on a red velvet backdrop in an ornate gilt wooden frame.
Extremely fine.

\$500

Ex Ken O'Brien Collection with his handwritten card.



850*
Orthodox Icon, 20th century, traditionally painted depicting Mother of God and Christ Child, overlaid with an elaborate metal riza, set in a glazed and framed hinged timber travelling case with gilded insert, (29cm x 24.5cm).
Extremely fine.

\$150



851*
 Orthodox Icon, 20th century, traditionally painted depicting Christ showing half length, with overlaid metal riza, in hinged timber case, (29.5cm x 24.5cm). *Extremely fine.*
 \$150



853*
 Orthodox Icon, 20th century, traditionally painted depicting Christ showing half length, with overlaid metal riza, in hinged timber case, (27.5cm x 24.5cm). *Extremely fine.*
 \$150



852*
 Orthodox Icon, 20th century, traditionally painted depicting Mother of God and Christ Child, overlaid with an elaborate metal riza, set in a glazed and framed hinged timber travelling case with gilded insert, (24cm x 27.5cm). *Extremely fine.*
 \$150



854*
 Orthodox Icon, 20th century, traditionally painted depicting Mother of God and Christ Child, overlaid with an elaborate metal riza, set in a glazed and framed hinged timber travelling case with gilded insert, (23.5cm x 19.5cm). *Extremely fine.*
 \$100



855*
Orthodox Icon, 20th century, traditionally painted depicting Christ showing half length, with overlaid metal riza, in hinged timber case, (23.5cm x 19.5cm). *Extremely fine.*
 \$100

856
Soft wood scale model ship, 'The Argonaut' hand crafted. *Fine.*
 \$300

857
Soft wood scale model Viking ship, handcrafted. *Fine.*
 \$300



858*
James Gleeson (1915 - 2008), "The Fighting Atoms", 1938, oil on board, 79.0 x 64.0 cm, signed by Gleeson lower left. *Framed, extremely fine.*
 \$23,000

Provenance - Private Collection Sydney then Deutscher and Hackett Fine Art auction April 2010.



859*
James Gleeson (1915 - 2008), "Figure in Psychoscape" oil on a composition board, 20.00 x 15.00 cm, signed lower right. *Extremely fine.*
 \$2,000

Ex Deutscher and Hackett Fine Art Auction, Melbourne, November 2013, lot 92.



860*
Donald Friend (1915 - 1989) "Boy With a Dog" 1948 - 1949, oil on board, 38.00 x 26.50 cm. *Extremely fine.*
 \$15,000

Provenance - Savill Galleries, Sydney; Deutscher - Menzies, Melbourne, May, 2001, lot 79; Agnews, London



861*
Zoltan Fenyes, (1924-1997), 'My Heart Still Belongs To Zelda', oil on board, framed, (56 x 46cm). *Very fine.*
\$100



863*
Zoltan Fenyes, (1924-1997), 'Old Composer', oil on board, framed, (43 x 37.5cm). *Very fine.*
\$100



862*
Zoltan Fenyes, (1924-1997), 'Relax', oil on board, framed, (58 x 50.5cm). *Very fine.*
\$100



864*
Zoltan Fenyes, (1924-1997), 'Reclining Gentleman With Banjo', oil on board, framed, (54 x 46cm). *Very fine.*
\$100



865*
Zoltan Fenyes, (1924-1997), 'Old Musician', oil on board,
framed, (51.5 x 46.5cm). *Very fine.*

\$100



867*

Zoltan Fenyes, (1924-1997), Elderly Couple on Park Bench,
oil on board, framed, (50.5 x 42.5cm). *Very fine.*

\$100



866*
Zoltan Fenyes, (1924-1997), Two Mature Men Drinking,
oil on board, framed, (50.5 x 50cm). *Very fine.*

\$100



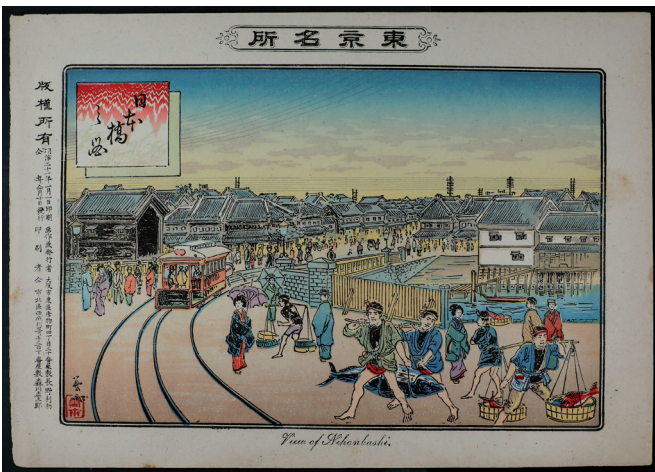
868*

Zoltan Fenyes, (1924-1997), 'Old Bohemians', oil on board,
framed, (73.5 x 53.5cm). *Very fine.*

\$200



869*
Advertisement, Embossed woodblock print, 1920's, 'Cantonese Cuisine in Kyoto' for Hamamura, a restaurant in Kyoto, printed by Akai Fujibei (265mmx325mm). The print stuck to backing cardboard accompanied by text, the print extremely fine, barking dog eared top left edge, fine.
 \$100



870*
Japanese Woodblock Print, "View of Nihonbashi" by Risuke Nagano, 1898, depicting a view of the harbour and surrounds of Nihonbashi, all within black frame, with print information in Japanese on left margin (190mmx260mm). Minor fraying on left edge, otherwise extremely fine.
 \$100



871*
China, Qing Dynasty, sword with steel blade (approx length 46.5cm), double fuller both sides, with decorated brass guard and ray covered handle with brass wrap and decorated brass pommel, with ray covered scabbard with decorated brass top and bottom and decorated thin brass suspension device. The blade with oil stains and the scabbard timber opening damaged, otherwise fine.
 \$400

Note: Licence to own required in State of Victoria, Australia.



872*
Middle Eastern (Egyptian) dagger, c1800s, straight blade (14cm), with dual centre fuller and decorated guard with coloured bone infills, handle carved in shape of an ibis with coloured infills, in a brass scabbard with carved decoration on one side and an Arabic inscription on the opposite side, with two suspension loops fitted. Solder marks where loops fitted to scabbard, a few flaws in carved handle, otherwise fine.
 \$100

873
Spain, replica of the Colada Del Cid sword, with decorated steel blade (length 35cm), with multiple steel guard and steel mesh handle, no scabbard, made in Toledo, no scabbard. With oxidation on blade, otherwise very fine.
 \$50

Note: Licence to own required in State of Victoria, Australia.

874
Spear Head, no identifying marks, made of steel. Fine.
 \$50

875
Metal Gas Container, a vintage bowled container in bronze with copper tubing and with small separate container above, possibly for water, the carry handle bears a stamp that is only partly visible but the details showing are, '18/P.H. in a circle around a crown'. Some parts loose and with bumps and wear, otherwise good for age.
 \$50

876
Philippines, sword with slightly curved steel blade (approx

length 48cm), no fuller, with carved timber handle connected to blade with small brass section, with timber scabbard with affixed timber decoration. *The blade dark coloured and with edge nicks and the scabbard with scratches and other marks and very tight fitting, otherwise fine.*

\$50

Note: Licence to own required in State of Victoria, Australia.

877

Philippines, kamplian sword with steel blade (approx length 55.5cm), with decorated brass section connecting to decorated timber handle, no scabbard; another with decorated steel blade (approx length 56.5cm), with carved bone handle, no scabbard. *The first blade with blackened toning and some scratches, otherwise fine, the second also blackened and with some oxidation and the handle badly damaged, otherwise good. (2)*

\$50

Note: Licence to own required in State of Victoria, Australia.

878

Gun cleaning kit, for .303 calibre, in rusty tin of issue; brass powder measure with long brass handle, the base of the measure stamped, 'Kynoch/.38'. *Very good - fine. (2)*

\$50

879

Spear Head, no identifying marks, crudely made steel spiked spear head. *Very good.*

\$40

880

Daggers, both without any markings for identifying, includes small spike dagger cast in steel, no guard, with timber handle and scabbard, these both with painted decoration at the base of the handle and top and bottom of scabbard; also a small curved steel bladed knife with timber handle and no guard or scabbard. *The first with heavily pitted blade and the second with damaged handle and heavily toned blade, otherwise good. (2)*

\$40

881

Germany, fire brigade 'Feuerwehr' visor cap, with internal lining, no chin strap. *Marks where front badge has been removed, cap is dusty and needs cleaning, otherwise fine.*

\$30



882*

Philippines, hand made knife with steel blade (length 9.5cm), with wooden handle wrapped in wire at top, bottom and middle, no guard, the scabbard is wood with a turned tip,

and is also wire wrapped at top, bottom and middle, the belt fitting is carved in wood. *Pitting to the crudely made blade, otherwise fine.*

\$30

883

Afghanistan, pale yellow woollen Pakol hat with flat top and rolled up bottom edge, lined with grey cotton material, with maker's label on inside. *With a few moth holes, otherwise very fine.*

\$30

This is a traditional form of an Afghan man's headwear.



884*

Dagger, modern casting in silvered metal, double sided blade (length 16cm), with guard and silvered metal handle in the shape of a standing medieval knight, no scabbard. *With pitting from casting, otherwise fine.*

\$30



885*

Small scooped coin bowl, in 800 silver, stamped on back, 'Handarbeit (crown) 800 E.Bode' (hand hammered in 800 fine silver by E.Bode) (diameter 9.5cm; tot wt 71.4g), in the centre of the dish is fitted a German, Hamburg silver three mark, 1913J (KM.620). *A few very small edge nicks, otherwise very fine.*

\$120

886

Knife and Fork, in white metal pocket knife format, by Singleton & Priestman, Sheffield; also a small penknife with Mother of Pearl handle and blade hallmarked for Sheffield 1909 by maker T.M (Thomas Marples). *The first very fine, the second with blade worn, otherwise good. (2)*

\$100

Vendor's note for the first item reads, 'Boer War Knife and Fork as Pocket Knife, owned by Lord Kitchener's Lead Scout.'



887*
USA, silver souvenir tea spoon, c1940s, stamped on reverse of stem, 'Sterling', the stem is decorated and voided and at the end of the handle in a circle is an image of a leaping flying fish and the name, 'Miami Fla'. *Very fine.*

\$50



888*
Netherlands, M.S.Willem Ruys ship trip souvenir tea spoon, c1950s, at the end of the handle is featured the ship, M.S.Willem Ruys and on the reverse of the stem is the maker's mark and 90. *Very fine.*

\$50



889*
Switzerland, souvenir silver tea spoon, c1890s, at end of the decorated stem is a voided figure of an alpine horn blower with the word Switzerland below and on the reverse is stamped, '800 Silta'. *Very fine.*

\$50

890
Large Bottle Opener, a housewarming gift, in aluminium (approx length 22.5cm), on one side is A Toast to the Host in black and then various other messages in black in other languages and one in white over all of one side, on the back it indicates made in Japan, with pierced hole at handle end for suspension. *Very fine.*

\$50



891*
Netherlands, Zeeland Province, Middelburg sterling silver plated teaspoon, with crest of Middelburg at the end of the handle; Limburg Province, Valkenburg sterling silver plated teaspoon, with crest of Valkenburg at the end of the handle, both stamped on the reverse of their stems, SOLA and 90. *Very fine.* (2)

\$50



892*
Singapore, Colonial, Kelantan silver tea spoons (jeweller acid tested as .900 plus), plain bowls and ringed handle, at the end of one handle is a palm tree and on the other is a stylised tiger's head. *Very fine.* (2)

\$50



893*
USA, antique silver commemorative tea spoon by George L. Vose, marked on back of handle 'sterling', bowl features image of Monument Park, Cleveland Ohio, front of handle has printed, 'Cleveland - O.' on the stem and at the end is featured an image of Soldiers and Sailors Monument and on the reverse are images of Perry's Monument, Kossuth Monument and the Moses Cleveland statue. *Very fine.*

\$50



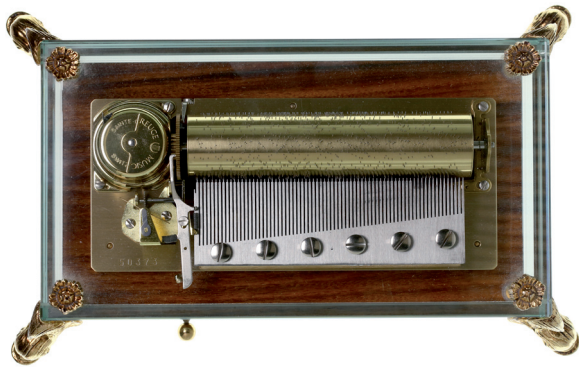
894*
Italy, Pompeii antique silver souvenir teaspoon, at end of decorated handle is an image of the snake angel above a silver rectangular section with the word, 'Pompeii' and on the reverse of this section is '800' and '8 FI' (this is Firenze). *Very fine.*

\$50



895*
France, Paris souvenir silver tea spoon, c1880s, the bowl with hallmark and also inscribed, 'Paris', at the handle end of the decorated stem is the shield of Paris on both sides. *Very fine.*

\$50



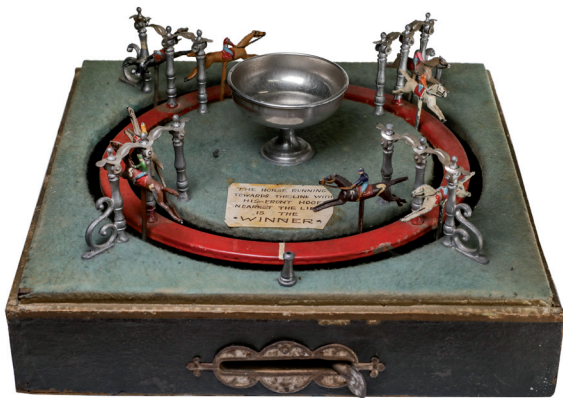
896*
Music Box, by Reuge Music, Switzerland, c.1990, elaborate mechanism under glass, with gilt feet modelled as dolphins, plays three Chopin pieces, ("Polonaise, Tristesse, Impromptu"), (23 x 14cm). *Very fine, not tested for working order.*

\$400



899*
Hasselblad 500C/M, 1957-1970, medium format camera, with Hasselblad Magnifying Hood Chimney Finder, Carl Zeiss Planal 2.8/80mm lens, 21 and 55mm extension tubes. *Camera needs servicing, body and lens very fine.*

\$5,000



897*
Vintage French horse racing parlour game, "Jeu de Course", (late 19th century), with eight painted lead race horses with jockeys, racing in two circles through four gates, with finishing post and coin dish to centre, activated by spring operated lever, with associated wooden paddles, in original box. *Very fine and scarce.*

\$50



900*
Table Orrery, a Parkes & Hadley patent brass table orrery (mechanical model of Solar System) (approx 30x24x12cm), London, c1880, features calendar plate with gear pushed mechanism and a table stand base, affixed to the base stand is a plaque that reads, 'George Philip & Son/Geographical/&/ Educational Publishers/London/32 Fleet Street'. *Missing central sun deflector and globe above cog wheel, otherwise fine and rare.*

\$300

898
Modern Lantern Robot, battery powered lantern robot with box, Playing Ping-Pong game, clockwork table tennis game with the original box, Baby Robot, clockwork in box (2), clockwork racer and boat in boxes, three robots including salt and pepper bots and walking robot. *Extremely fine.* (8)

\$100

901
Vintage desk biro holder, featuring a rectangular nickel silver base (approx 15.5x7cm) with a biro in a holder at one side and on the opposite side is an eagle with outspread wings landing on a log; also an antique fan ring dish featuring a reclining lady holding a large open fan, cast in white metal (approx 16x12cm). *The first has the base with spotty oxidation and needs polishing, otherwise fine; the second needs cleaning, otherwise very fine.* (2)

\$40

902
Blood Letting knives, a pair of vintage blood letting knives with timber handles, for use on horses or humans, the short blades stamped, 'Velos/No 551/Made/in/England', together with original sharpener. *Fine.* (3)
 \$40

903
Tobacco Cutter, a vintage metal and timber tool by McMillan of Sheffield, metal back plate marked, 'W A (mostly illegible) Tyzack & Co'. *Well aged, nearly fine.*
 \$40



904*
Vintage bookends, a pair of matching brass bookends featuring an Arabian with a rifle raised above his head and mounted on a rearing horse (approx size 12x13.5cm). *Very fine.* (2)
 \$100



905*
USA, Boyd's Galvanic Battery Medicinal Amulet, patented Jan. 17 1878, 14 different metal shapes mounted in a circular metal ring, claimed to cure all known diseases (Rulau NY 33). *Very fine.*
 \$100



906*
Emergency Survival Tool, a vintage multi tool axe hammer in cast metal with timber coated metal handle. *Fine.*
 \$80

907
Veterinary fleam, a nineteenth century blood letting knife in brass with three steel blades, each blade stamped with details but only one legible and it reads, 'No 6/Norfolk St/Sheffield'. *The blades pitted, otherwise good.*
 \$80



908*
Lorgnette, vintage spring loaded folding reading glasses in rolled gold frames. *Some scratches on the glass, otherwise very fine.*
 \$60

909
Vintage Flock 25 toy cork pop pistol, (approx size 11x6cm), in black metal, made in Germany, in working order. *Very fine.*
 \$50

910
Miscellaneous items, includes a pair of cased small binoculars and inscribed on the steel linkage band is, 'From/My dear Mother/Dec 25, 1885.'; prize medal in silver, on one side is inscribed, 'Milton/C.C. (Cricket Club)/C.D' and on the opposite side, 'R.D.C.L/B/Division/1898'; lapel badge (18mm) in gilt and enamel featuring the Cross of Lorraine; The Institute Of Engineers Australia, lapel badge (18.5mm) in gilt and enamel; a Red Cross tinnie badge; various stick-pin badges (6); a British Flag badge (20x17mm) in gilt and enamel, by G&E Rodd, Melb; a pink gemstone (about 3cts), with chipping; various other items (6); ribbon featuring Belgium national colours (approx L 3.15 metres x W 6cm) (some tears); also a khaki webbing military style belt with coloured embroidery on outside, this severely damaged, and a Great Britain George II halfpenny, 1735 (S.3717) (very worn). *Poor - good very fine.* (21)
 \$50

911
Vintage telephone, probably Belgium c1940s, with copper base with fold-over carry handle, bakelite handset, with four short rubber legs on base (Wt excluding handset 1.635kg); also wax match pressed tin container with lift up lid and on lid and four sides various depictions including, 'Bell & Black/15 Bow Lane/Cheapside/London', on the base is the striker. *The handset with some damage to speaking end and cord not connected to phone base, centrepiece missing from dial, otherwise fine; the match tin with oxidation under lid and toning to body, otherwise good.* (2)
 \$40

912

Tableware, set of 9 glasses with ornate metal holders; set of 6 desert spoons with ornate handles, in a Bronze Table Ware Mariners' Shop wooden storage box; electric Russian samovar; three Chinese resin statues of traditionally dressed figures. *Some glasses have lost the decorative band; samovar has corrosion spotting, good.* (4)

\$50

913

Smoking pipes, includes African Native's head clay bowl with plastic and stainless steel stem, broken at end but broken section included with lot; another with turban headed man clay bowl with plastic stem; another turban headed man clay bowl with plastic and stainless steel stem; tobacco storage horn with hinged-lid with handcrafted brass decoration around the lid and brass ring around the top of container; another horn tobacco storage container with hinged-lid with similar handcrafted silver decoration around the lid and with silver ring around the top of the container, this inscribed, 'Alex Ingles', and on the horn is a silver heart inscribed, 'P I'. *The second last with chip in edge of lid and lid does not close properly, the last lid also does not close properly, the pipes all used with black stains around bowl and one with crack at one side, otherwise fine.* (5)

\$30